

Photographs



Figure B-1. 1908 photo of the 1898 Livestock Exchange structure showing the original facade, portico, and corner finials.⁸⁰

⁸⁰ Louis Charles McClure, "Live Stock Exchange Bldg., Denver," 1908, WH2300. Louis Charles McClure papers, 1898-1943, Denver Public Library.



Figure B-2. Photo of the Livestock Exchange during construction of the 1916 structure. Swift and Co. packing plant seen in the background.⁸¹



Figure B-3. Overview of the stock yards (facing south) and Livestock Exchange prior to construction of the 1919 structure. The 1909 Stadium Arena and smokestack of Omaha and Grant smelter can be seen in the background.⁸²

⁸¹ "Denver Business Meat Industry Trade Swift Co," n.d., National Western Stock Show.

⁸² "1934_Stockyards," 1934, National Western Stock Show Archives, Denver, Colo.



*Figure B-4. 1934 photo of the complete Livestock Exchange and garage. Note the number of cars lining the streets around the yards.*⁸³

⁸³ "1934-13, DUSY, Stock Yards," 1934, National Western Stock Show Archives, Denver, Colo.

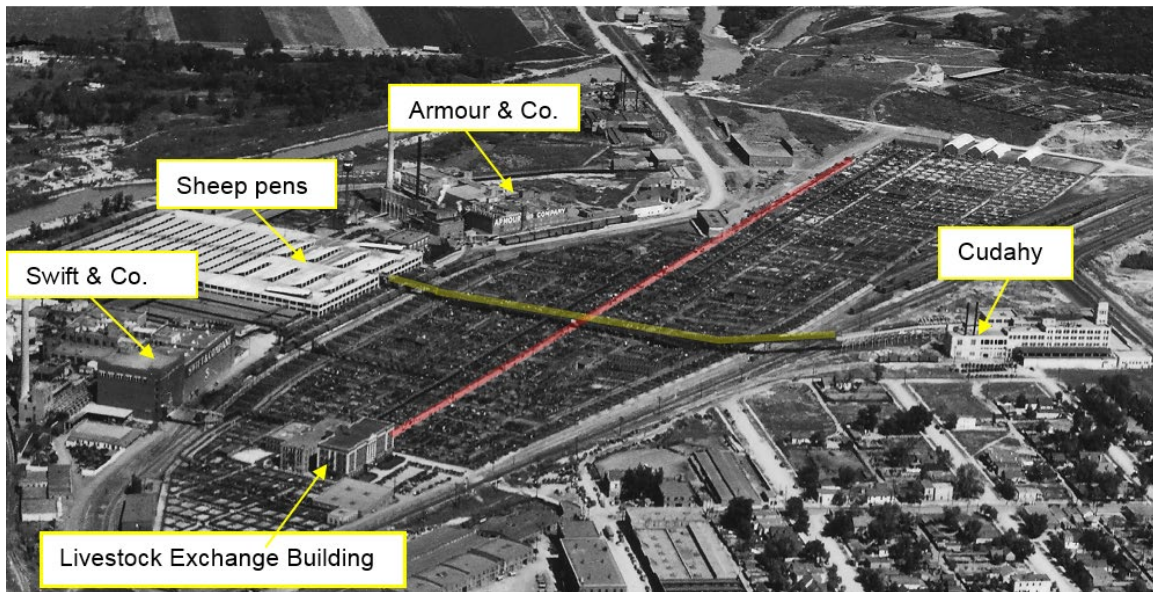


Figure B-5. 1934 aerial image showing DUSY at the peak of its production including the Livestock Exchange and meatpacking plants adjacent to the stockyards. Primary catwalks used for the circulation of people and animals are shown in red and yellow.⁸⁴



Figure B-6. Front (southeast) facade of the Livestock Exchange, 1916 structure. View facing northwest.⁸⁵

⁸⁴ Unknown, *Denver Union Stock Yards*, photo, 1934, National Western Stock Show.

⁸⁵ National Western Center Authority photograph, June 2019.



Figure B-7. Detail of Classical Revival 1916 main entry portico, columns, and other decorative features. View facing southwest.⁸⁶

⁸⁶ National Western Center Authority photograph, June 2019.



Figure B-8. Side (northeast) elevations of the Livestock Exchange showing all three structures. Left to right: 1916 structure, 1898 structure, 1919 structure View facing southwest.⁸⁷



Figure B-9. Side (southwest) elevations of the Livestock Exchange. View facing northeast.⁸⁸

⁸⁷ Mead & Hunt photograph, August 2016.

⁸⁸ Mead & Hunt photograph, August 2016.



Figure B-10. Rear (northwest) elevation of the Livestock Exchange, showing all three structures. View facing east.⁸⁹



Figures B-11 and B-12. Connection between 1916 and 1898 structures, southwest (left) and northeast (right). Elevator tower with metal cupola and modern fire escape.⁹⁰

⁸⁹ Mead & Hunt photograph, August 2016.

⁹⁰ Mead & Hunt photograph, November 2018.



Figure B-13. Connection between 1898 and 1919 structures. Note the elevated concrete walkway, elevated brick walkway behind it, and concrete sidewalk with metal handrail. View facing southwest.⁹¹



Figure B-14. 1919 structure, view facing northeast.⁹²

⁹¹ Mead & Hunt photograph, November 2018.

⁹² National Western Center Authority photograph, November 2021



Figure B-15. 1919 structure, view facing southeast.⁹³

⁹³ National Western Center Authority photograph, November 2021.



Figure B-16. 1898 Structure, view facing south.⁹⁴

⁹⁴ National Western Center Authority photograph, November 2021.



Figure B-17. 1898 (left) and 1916 (right) structures, view facing northeast.⁹⁵



Figure B-18. 1916 (left), 1898 (center), 1919 (right) structures, View facing west. CSU SPUR buildings and crane also pictured.⁹⁶

⁹⁵ National Western Center Authority photograph, November 2021.

⁹⁶ National Western Center Authority photograph, November 2021.

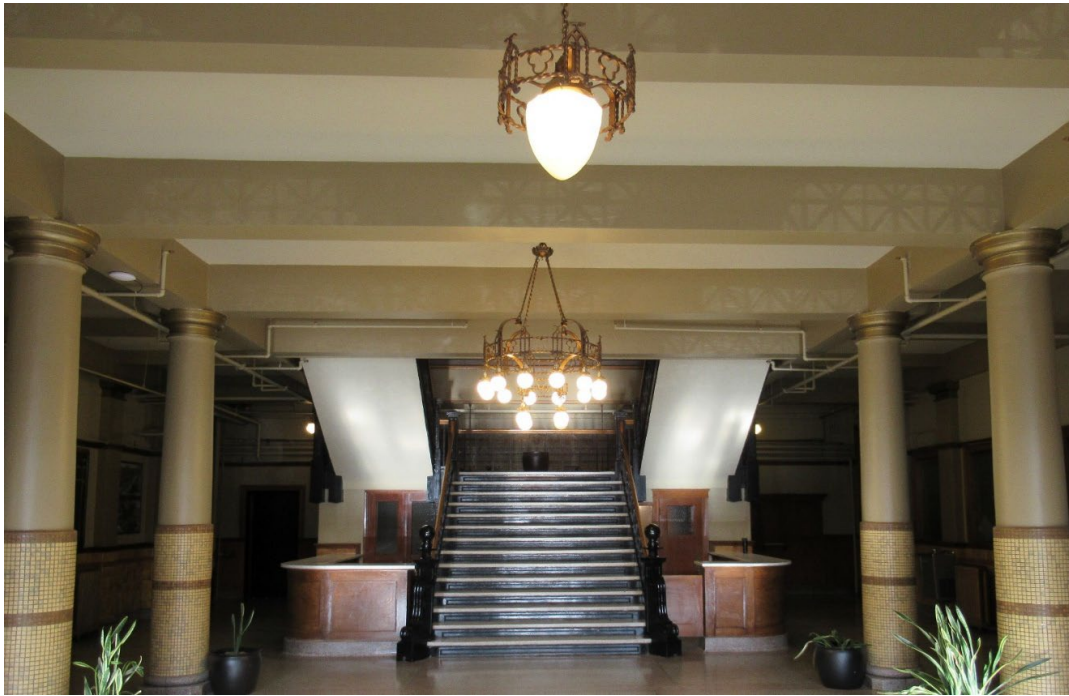


Figure B-14. Entry hall and grand staircase, 1916 structure.⁹⁷



Figure B-15. Office with coffered ceiling and decorative motifs, 1916 structure.⁹⁸

⁹⁷ NWCO photograph, November 2018.

⁹⁸ NWCO photograph, November 2018.



Figure B-16. Bathroom features including marble stall and urinal and hexagonal tile floor, 1916 structure.⁹⁹

⁹⁹ NWCO photograph, November 2018.



Figure B-17. Historic chalkboard in second story hall, 1916 structure. ¹⁰⁰



Figure B-18. Interior of 1898 structure. ¹⁰¹

¹⁰⁰ NWCO photograph, November 2018.

¹⁰¹ NWCO photograph, November 2018.



Figure B-19. Interior of 1898 structure.¹⁰²

¹⁰² NWCO photograph, November 2018.



Figure B-20. Safe frame inside the 1898 structure. Frame matches the safe frame in the 1919 structure.¹⁰³

¹⁰³ NWCO photograph, November 2018.



Figure B-21. Interior of 1919 structure showing wood floors, wainscoting, and window trim.¹⁰⁴

¹⁰⁴ Mead & Hunt photograph, December 2018.



Figure B-22. Bar inside the Stockyard Saloon and Restaurant, possibly sourced from the former Windsor Hotel. Walk-in safe is original to the 1919 structure.¹⁰⁵

¹⁰⁵ Mead & Hunt photograph, December 2018.

Boundary Map

