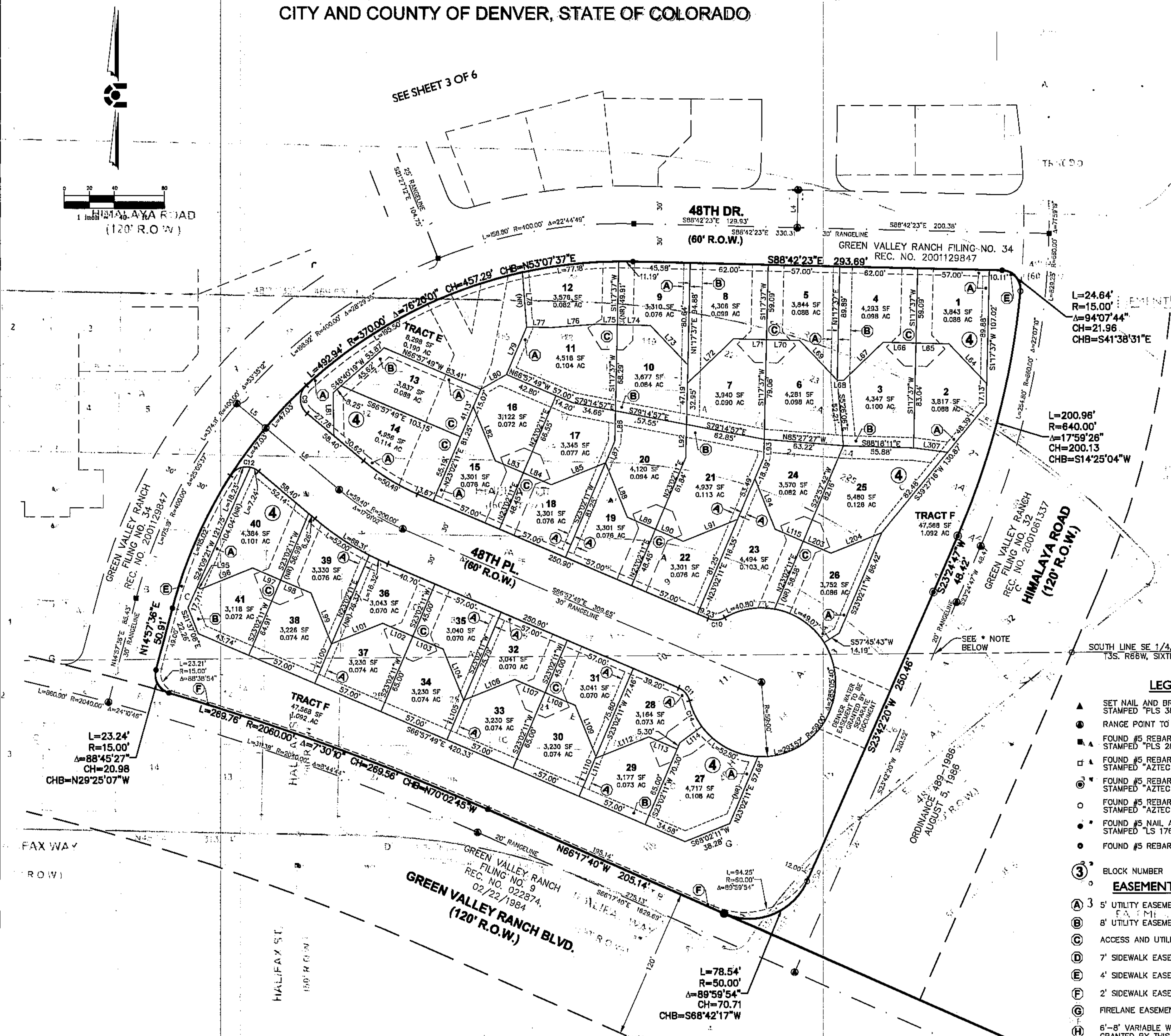


GREEN VALLEY RANCH FILING NO. 70

A PART OF THE SOUTHEAST QUARTER OF SECTION 15 AND THE NORTHEAST QUARTER OF SECTION 22,
TOWNSHIP 3 SOUTH, RANGE 66 WEST OF THE SIXTH PRINCIPAL MERIDIAN,
CITY AND COUNTY OF DENVER, STATE OF COLORADO

33

LOT LINE TABLE			LOT LINE TABLE		
LINE #	LENGTH	DIRECTION	LINE #	LENGTH	DIRECTION
L1	29.00	S41° 25' 28"W	L61	43.61	S3° 30' 19"E
L2	25.00	N41° 25' 28"E	L62	12.90	S54° 23' 38"W
L3	51.94	N1° 17' 37"E	L63	24.58	S86° 18' 20"W
L4	30.00	N1° 17' 37"E	L64	43.60	S43° 46' 37"E
L5	30.00	S49° 56' 47"E	L65	26.13	S88° 42' 23"E
L6	76.26	S49° 56' 47"E	L66	26.13	S88° 42' 23"E
L7	15.48	N48° 34' 32"W	L67	43.61	N46° 21' 49"E
L8	15.43	S48° 34' 32"E	L68	5.00	N88° 42' 23"W
L9	57.94	S48° 34' 32"E	L69	43.61	S43° 46' 37"E
L10	40.00	N41° 25' 28"E	L70	26.13	S88° 42' 23"E
L11	24.13	N48° 34' 32"W	L71	26.13	N88° 42' 23"W
L12	24.13	S48° 34' 32"E	L72	50.67	S46° 21' 48"W
L13	43.78	N86° 29' 41"E	L73	43.27	S43° 46' 37"E
L14	47.76	S3° 38' 44"E	L74	26.13	S88° 42' 23"E
L15	49.26	N3° 30' 19"W	L75	16.70	S88° 42' 23"E
L16	24.13	N41° 25' 28"E	L76	35.98	N85° 36' 18"E
L17	24.13	S41° 25' 28"W	L77	19.34	S88° 54' 04"E
L18	43.61	S86° 21' 16"W	L78	43.42	N4° 23' 38"W
L19	43.61	N3° 30' 19"W	L79	40.75	S23° 02' 11"W
L20	24.13	N41° 25' 28"E	L80	23.46	S60° 16' 36"W
L21	24.13	S41° 25' 28"W	L81	34.34	S1° 03' 17"E
L22	43.61	S86° 21' 16"W	L82	46.43	N22° 02' 01"W
L23	9.00	N48° 34' 32"W	L83	24.13	N66° 57' 49"W
L24	43.61	S86° 29' 41"W	L84	24.13	S66° 57' 49"E
L25	24.13	N48° 34' 32"W	L85	46.43	N68° 06' 23"E
L26	24.13	S48° 34' 32"E	L86	24.11	S1° 17' 37"W
L27	43.61	S3° 38' 44"E	L87	18.73	S23° 02' 11"W
L28	34.20	N41° 25' 28"E	L88	46.43	N22° 02' 01"W
L29	43.61	S86° 29' 41"W	L89	24.13	N68° 57' 49"W
L30	24.13	N48° 34' 32"W	L90	24.13	S66° 57' 49"E
L31	24.13	S48° 34' 32"E	L91	46.43	N68° 06' 23"E
L32	46.22	S3° 38' 44"E	L92	26.20	N1° 17' 37"E
L33	41.37	N46° 05' 57"E	L93	14.28	S1° 17' 37"W
L34	31.95	N46° 05' 57"E	L94	43.14	N22° 02' 01"W
L35	1.93	S27° 48' 45"E	L95	3.31	N65° 50' 39"W
L36	52.31	S39° 34' 32"E	L96	44.51	S68° 06' 23"W
L37	45.67	N82° 29' 56"W	L97	24.22	S66° 57' 49"E
L38	24.13	N37° 34' 08"W	L98	26.13	S68° 57' 49"E
L39	48.40	S7° 21' 40"W	L99	43.54	N22° 07' 00"W
L40	41.24	S27° 48' 45"E	L100	34.20	N23° 02' 11"E
L41	39.88	N44° 38' 54"W	L101	43.61	S68° 06' 24"W
L42	29.14	S0° 16' 53"W	L102	26.13	N66° 57' 49"W
L43	29.14	S0° 16' 53"W	L103	26.13	S66° 57' 49"E
L44	36.53	S45° 12' 41"W	L104	43.61	S22° 02' 01"E
L45	14.49	S1° 17' 37"W	L105	34.20	S23° 02' 11"W
L46	43.81	S6° 02' 16"E	L106	43.61	S68° 06' 23"W
L47	38.22	S6° 02' 16"E	L107	26.13	N66° 57' 49"W
L48	44.20	S27° 48' 45"E	L108	26.13	S66° 57' 49"E
L49	50.72	N30° 34' 23"E	L109	43.61	S22° 02' 01"E
L50	24.13	N75° 30' 10"E	L110	34.20	N23° 02' 11"E
L51	24.13	S75° 30' 10"W	L111	32.54	S23° 02' 11"W
L52	40.22	N59° 34' 02"W	L112	45.96	S68° 06' 23"W
L53	23.91	S62° 56' 22"W	L113	24.46	N66° 57' 49"W
L54	10.12	S39° 34' 32"E	L114	21.84	S53° 28' 10"W
L55	53.65	S59° 24' 10"W	L115	24.23	N66° 57' 49"W
L56	44.50	N86° 21' 16"E	L203	24.13	S66° 57' 49"E
L57	26.13	N41° 25' 28"E	L204	43.46	N68° 06' 23"E
L58	26.13	S41° 25' 28"W	L307	27.26	S82° 31' 30"E



L=24.64'
R=15.00'
Δ=94°07'44"
CH=21.96'
CHB=S41°38'31"E

L=200.96'
R=640.00'
Δ=17°59'28"
CH=200.13'
CHB=S14°25'04"W

- LEGEND**
- ▲ SET NAIL AND BRASS TAG STAMPED "PLS 38151" IN CONCRETE
 - RANGE POINT TO BE SET AFTER CONSTRUCTION
 - ▲ FOUND #5 REBAR WITH 2" ALUM. CAP STAMPED "PLS 28286" IN RANGEBOX
 - FOUND #5 REBAR WITH ORANGE PLASTIC CAP STAMPED "AZTEC PLS 28286"
 - FOUND #5 REBAR WITH ORANGE PLASTIC CAP STAMPED "AZTEC LS 38064"
 - FOUND #5 REBAR WITH ORANGE PLASTIC CAP STAMPED "AZTEC LS 17666"
 - FOUND #5 NAIL AND BRASS TAG STAMPED "LS 17666" IN CONCRETE
 - FOUND #5 REBAR WITH BROKEN ORANGE CAP
- EASEMENT LEGEND**
- ④ BLOCK NUMBER
 - Ⓐ 3' UTILITY EASEMENT GRANTED BY THIS PLAT
 - Ⓑ 8' UTILITY EASEMENT GRANTED BY THIS PLAT
 - Ⓒ ACCESS AND UTILITY EASEMENT GRANTED BY THIS PLAT
 - Ⓓ 7' SIDEWALK EASEMENT GRANTED BY THIS PLAT
 - Ⓔ 4' SIDEWALK EASEMENT GRANTED BY THIS PLAT
 - Ⓕ 2' SIDEWALK EASEMENT GRANTED BY THIS PLAT
 - Ⓖ FIRELANE EASEMENT GRANTED BY THIS PLAT
 - Ⓗ 6'-8' VARIABLE WIDTH UTILITY EASEMENT GRANTED BY THIS PLAT

* NOTE: RANGE POINT POSITION PER GREEN VALLEY RANCH FILING NO. 32, NEITHER FOUND NOR SET. RANGE POINTS SHOWN HEREON MONUMENT THE EXISTING RIGHT-OF-WAY BETWEEN FILING NO. 32 AND FILING NO. 9.

SEE SHEET 3 OF 6 FOR CURVE TABLE

CIVIL ENGINEERING
DEVELOPMENT CONSULTING
LAND SURVEYING
302.702.4444
1950 W. Littleton Blvd., Ste. 109
Littleton, CO 80120

CORE CONSULTANTS

NO.	DESCRIPTION	DATE	BY

GREEN VALLEY RANCH FILING NO. 70

INITIAL PLAN
RELEASE: 3/30/15
DESIGNED BY: JCA
DRAWN BY: JCA
CHECKED BY: TMG

JOB NO.
14-040

SHEET
4 OF 6