

A background image of a Denver cityscape with various buildings and a park area with trees and a person sitting on a bench.

Denverright.

Your Voice. Our Future.

City Council LUTI Committee
April 11, 2017



Main purpose for today:

- Brief overview of Denverright outreach and vision elements
- Updates from each of the four Denverright plans



Denveright Public Outreach by the Numbers

Summer 2016 – March 2017

2 Community Think Thank Meetings

21 Task Force Meetings for all plans



Denveright Public Outreach by the Numbers

Summer 2016 – March 2017

25 Street Team Events

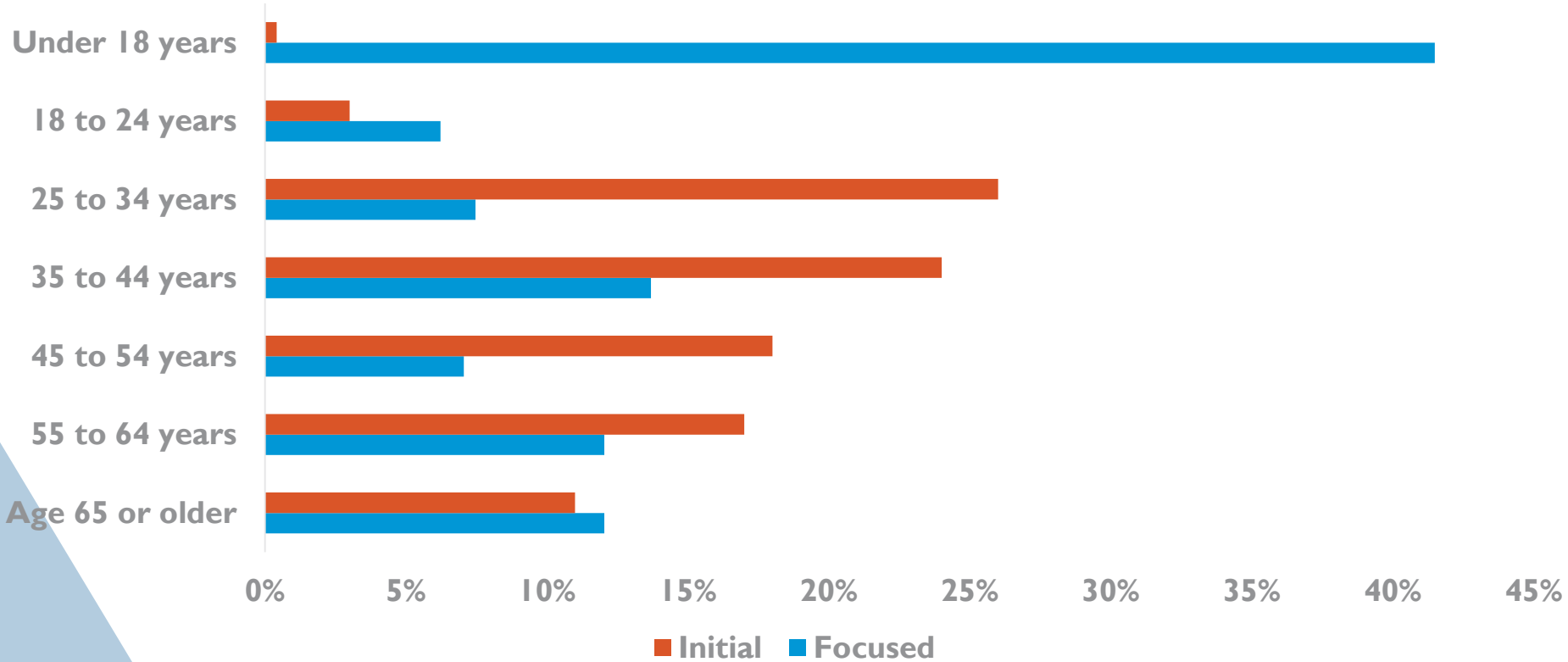
8 Community Workshops with over **660** participants

7 Online surveys with over **7,160** responses

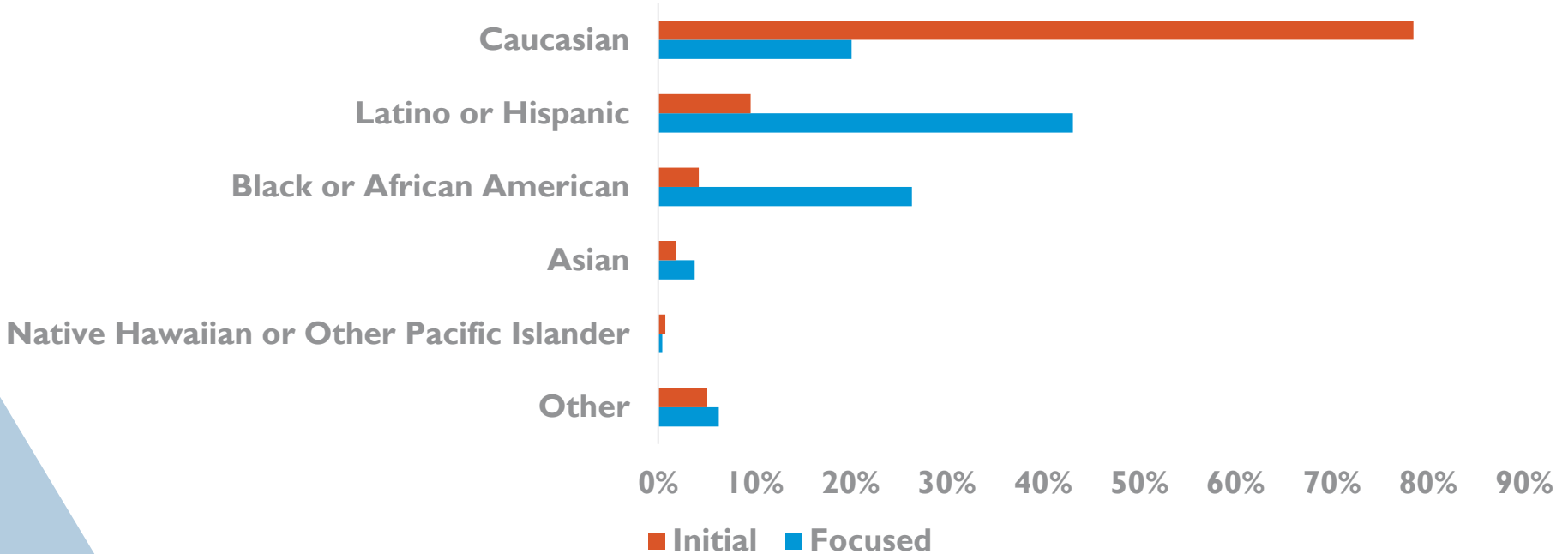
1 Hard copy survey with over **240** responses

Estimated
8,428
people
reached so far

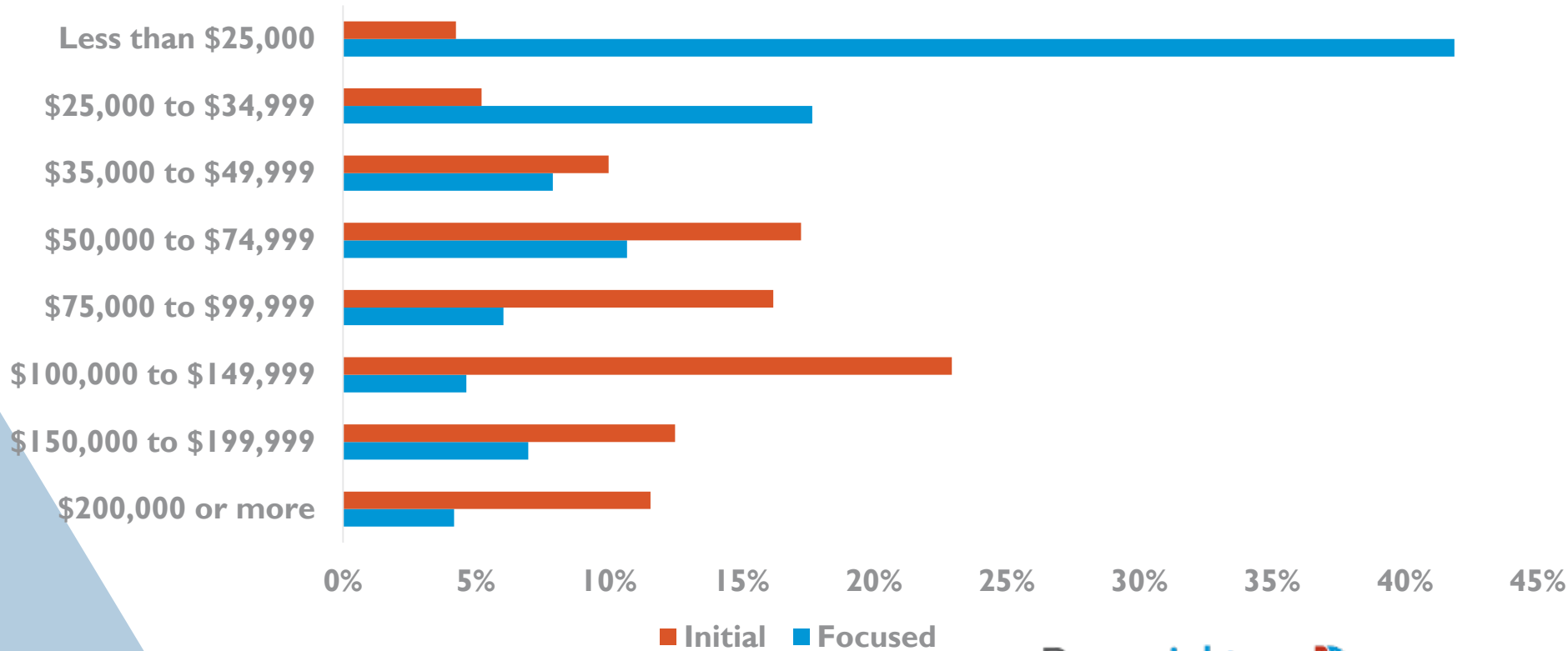
Age: Initial vs. Focused Outreach



Race/Ethnicity: Initial vs. Focused Outreach



Household Income: Initial vs. Focused Outreach



Initial Focused

Denveright Public Outreach

Coming this Spring and Summer ...



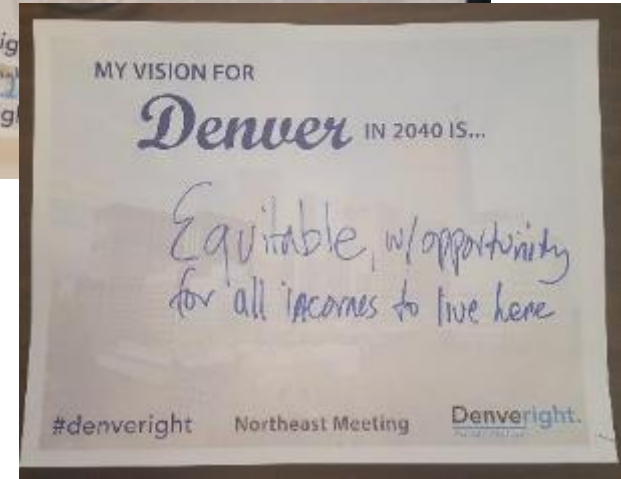
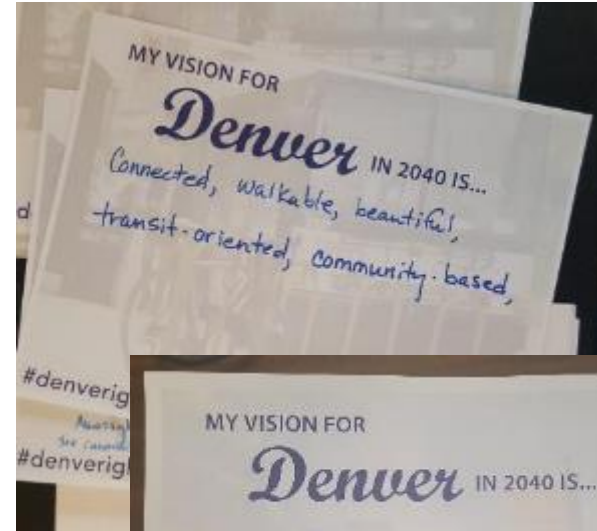
Survey Kiosks – one per Council District



Street Team and Plan Van

Denverright Values and Vision

Driven by the community ...





EQUITABLE, AFFORDABLE AND INCLUSIVE



SUPPORTING COMMUNITY VALUES:

- DIVERSE, FRIENDLY AND OPEN
- ACCESS TO OPPORTUNITY
- AFFORDABLE HOUSING AND TRANSPORTATION CHOICES



STRONG AND AUTHENTIC NEIGHBORHOODS



SUPPORTING COMMUNITY VALUES:

- ACCESS TO AMENITIES AND SERVICES
- ACTIVE AND VIBRANT
- AFFORDABLE HOUSING & TRANSPORTATION
- DIVERSE, FRIENDLY AND OPEN
- ENGAGED COMMUNITY
- EQUITY
- SENSE OF HISTORY AND CULTURAL HERITAGE
- WALKABLE, BIKEABLE, ACCESSIBLE AND TRANSIT-FRIENDLY



WELL CONNECTED, SAFE AND ACCESSIBLE PLACES



SUPPORTING COMMUNITY VALUES:

- WALKABLE, BIKEABLE, ACCESSIBLE, AND TRANSIT-FRIENDLY
- ACCESS TO QUALITY EDUCATION, TRAINING AND LIFELONG LEARNING
- ACCESS TO AMENITIES AND SERVICE
- ACCESS TO OPPORTUNITY
- SAFE AND INVITING
- TRANSIT CHOICES



ECONOMICALLY DIVERSE AND VIBRANT



SUPPORTING COMMUNITY VALUES:

- ACCESS TO OPPORTUNITY
- ACCESS TO QUALITY EDUCATION, TRAINING AND LIFELONG LEARNING
- BUSINESS-FRIENDLY AND ENTREPRENEURIAL
- DIVERSE EMPLOYMENT OPTIONS
- EQUITY



ENVIRONMENTALLY RESILIENT



SUPPORTING COMMUNITY VALUES:

- ENVIRONMENTAL STEWARDSHIP
- EQUITY
- GREAT PARKS AND OPEN SPACES
- OUTDOOR LIFESTYLE WITH CONNECTION TO THE MOUNTAINS



HEALTHY AND ACTIVE



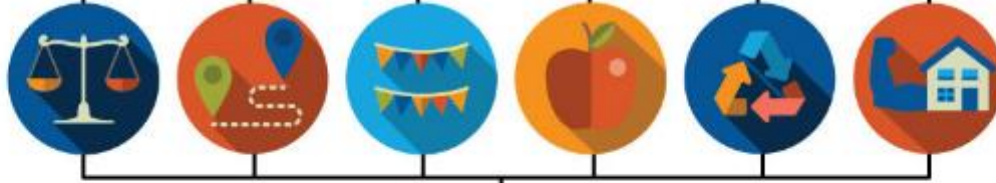
SUPPORTING COMMUNITY VALUES:

- ACCESS TO AMENITIES AND SERVICE
- ACTIVE AND VIBRANT
- GREAT PARKS AND OPEN SPACES
- SAFE AND INVITING
- OUTDOOR LIFESTYLE WITH CONNECTION TO THE MOUNTAINS
- WALKABLE, BIKEABLE, ACCESSIBLE AND TRANSIT-FRIENDLY

All
Denveright
Plans



VISION ELEMENTS



GOALS



OBJECTIVES

1. MEASURABLE
2. TIME-BOUND

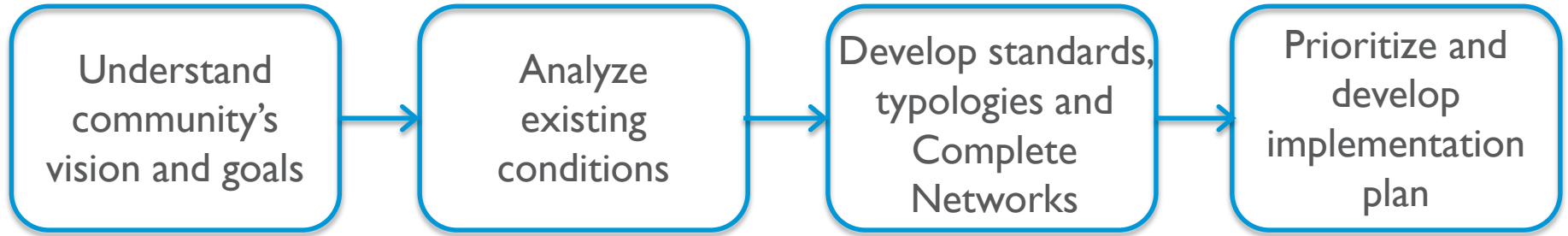
Plan Specific



Denver Moves: Pedestrians and Trails

Plan Update

Progress Update



*

We are here

Denver Moves: Pedestrians and Trails

Denveright outreach summary – Top 5 Words

WALKABLE DENVER



WORLD-CLASS TRAIL NETWORK



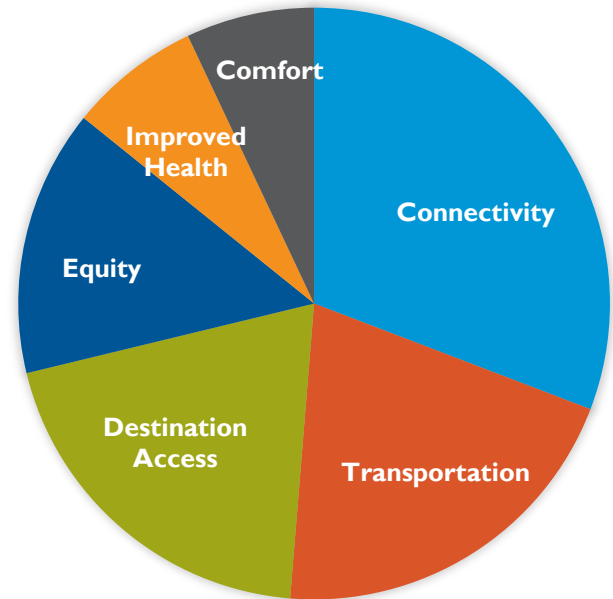
Denver Moves: Pedestrians and Trails

Denveright outreach summary – Goal voting

PEDESTRIAN GOALS



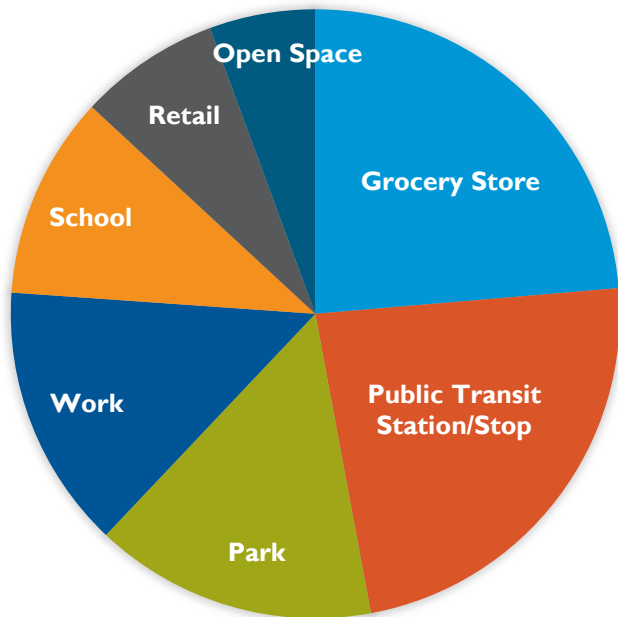
TRAIL GOALS



Denver Moves: Pedestrians and Trails

Denveright outreach summary – Key Destinations

TOP DESTINATIONS



Existing Conditions

- Task Force and MPAC draft completed March 10, 2017
- Examines existing performance of pedestrian and trails system according to community vision and goals



Pedestrian Goal: Safety

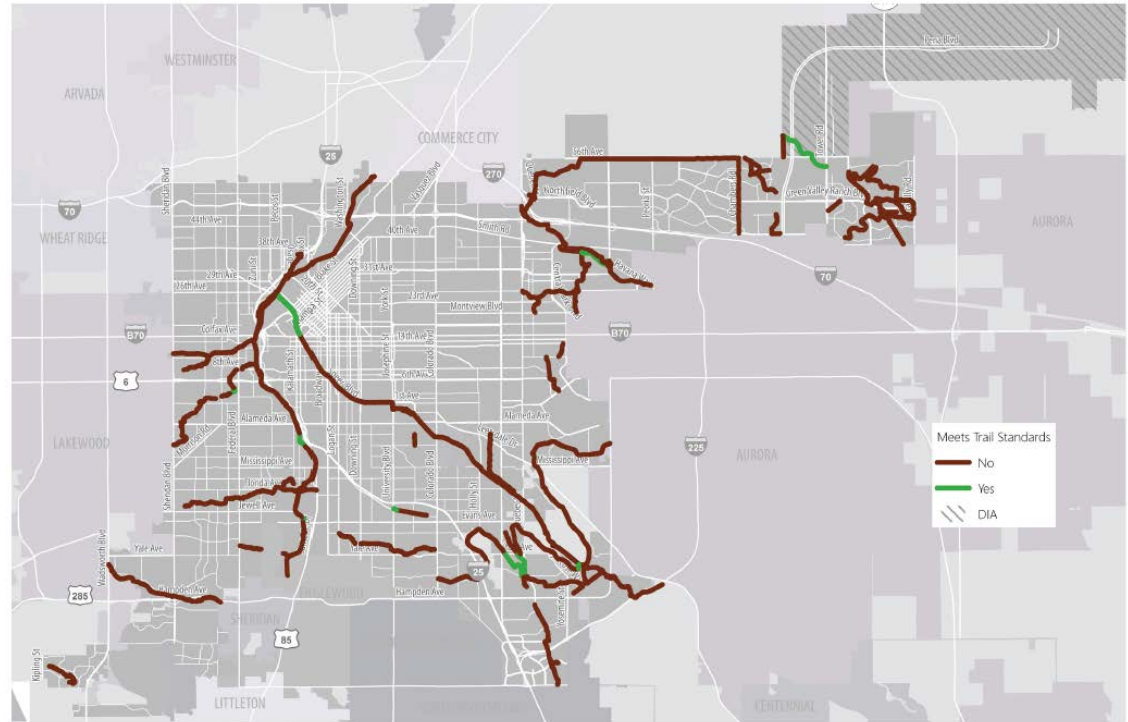
The average signal spacing across High Injury Network roadways is 970 ft



Trails

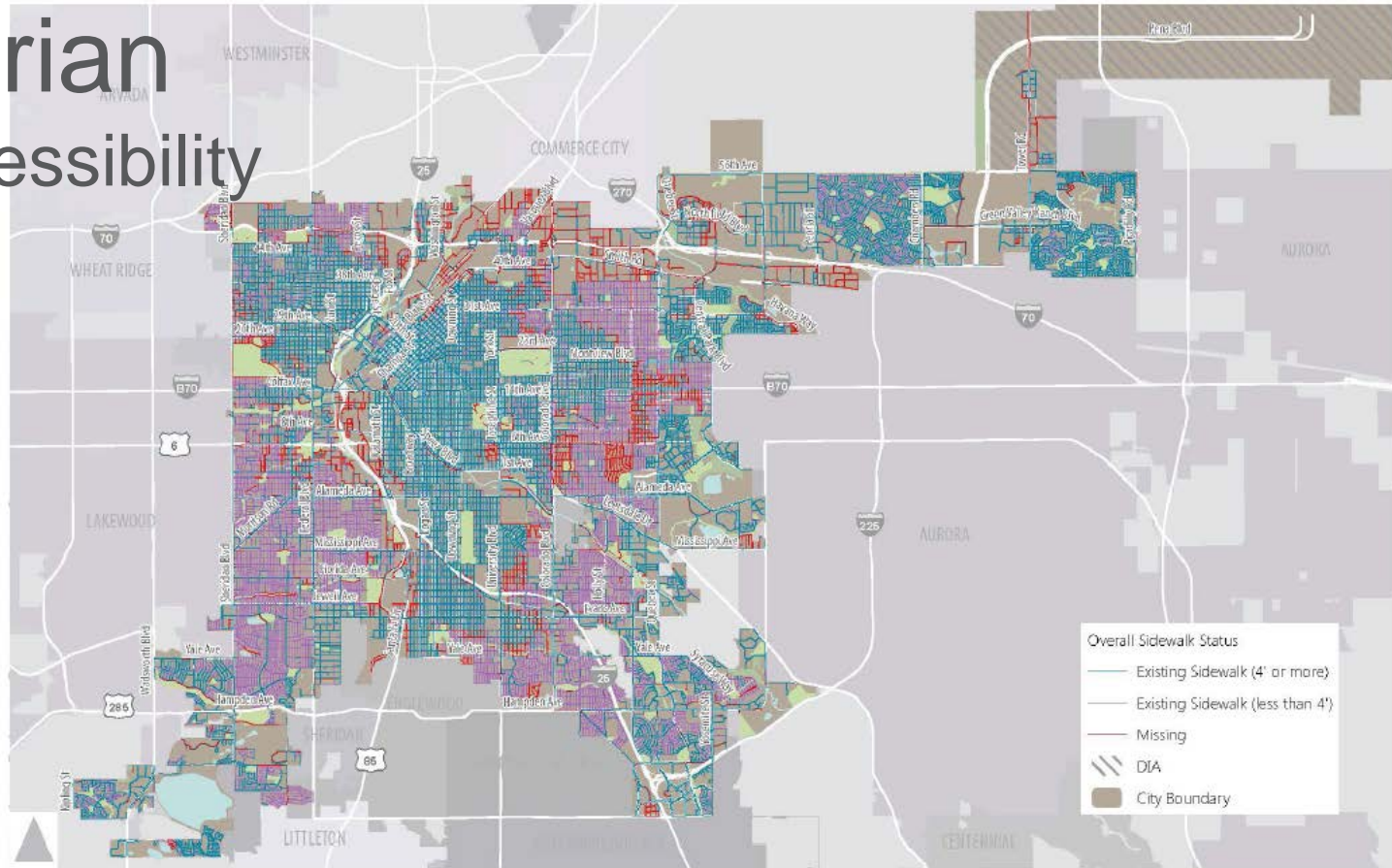
Goal: Safety

% of trails meeting proposed trail standards



Pedestrian Goal: Accessibility

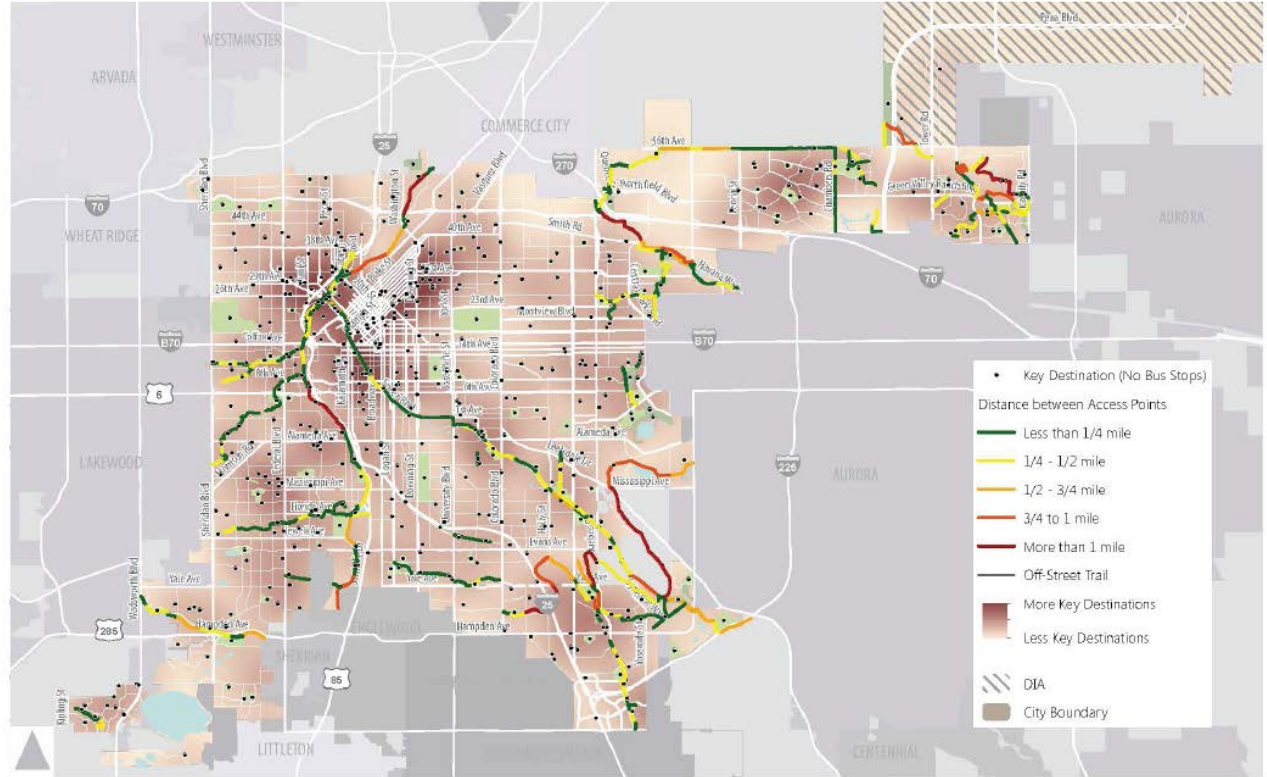
Where do
sidewalks meet
the 4 ft
minimum?



Trails

Goal: Destination Access

Trail access near key destinations



Next Steps

- Mar.-Aug. 2017 – draft Complete Networks and prioritization
- Aug.-Sept. 2017 – public outreach
- Sept.-Oct. 2017 – draft plan



Denver Moves: Transit

Plan Update



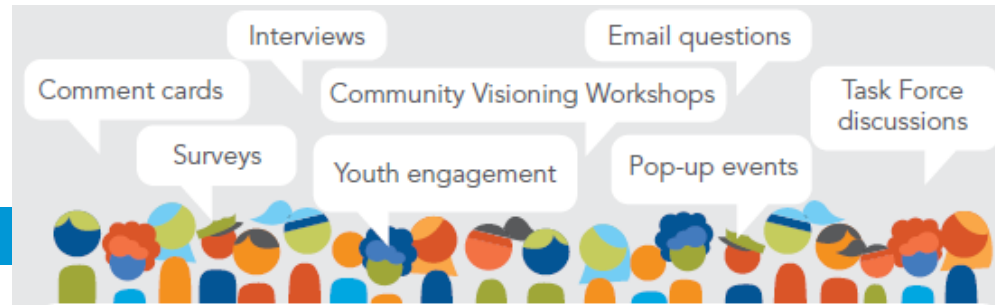
What We've Heard from the Community

3 key themes emerged about the kind of transit system the community wants in Denver:

 Connected Transit

 High Quality Transit

 Healthy Transit



What We've Heard from the Community

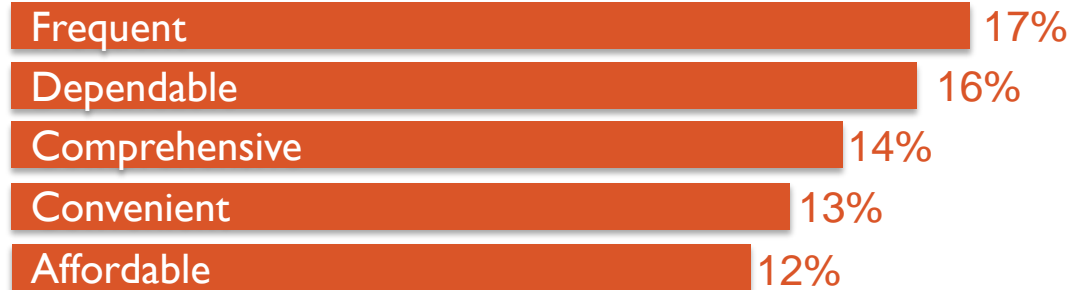
40%

of Denver residents surveyed, most wanted a transit system that made their communities healthier, more accessible and livable

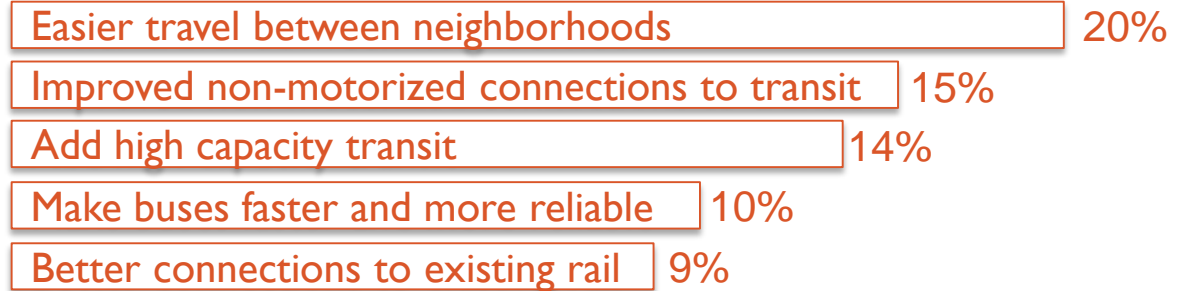
43%

of workshop participants said they would ride the bus or train more often if the service was faster, more frequent and user-friendly

What are your top priorities for improving transit in Denver?



What would you like to see *Denver Moves: Transit* accomplish?



What We've Heard from the Community



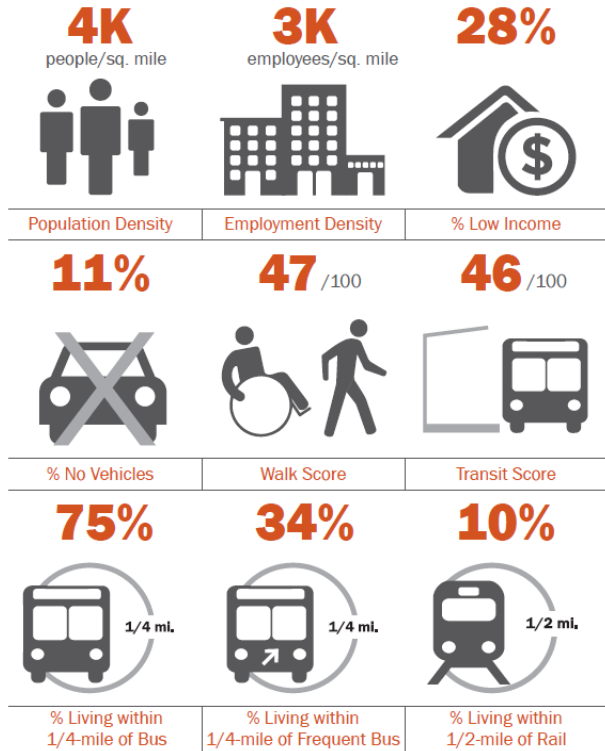
For more about what we've heard from the community:

<https://www.denvergov.org/content/dam/denvergov/Portals/Denveright/documents/transit/denver-moves-transit-what-weve-heard-feb2017.pdf>

State of the System Report

- What does transit service, access, and programs look like in Denver today?
- Who rides transit?
- What influences people to ride transit?
- What actions have other cities taken to demonstrate success in delivering local & regional transit?

Report is available on the project website:
<https://www.denvergov.org/content/denvergov/en/denveright/transit.html>



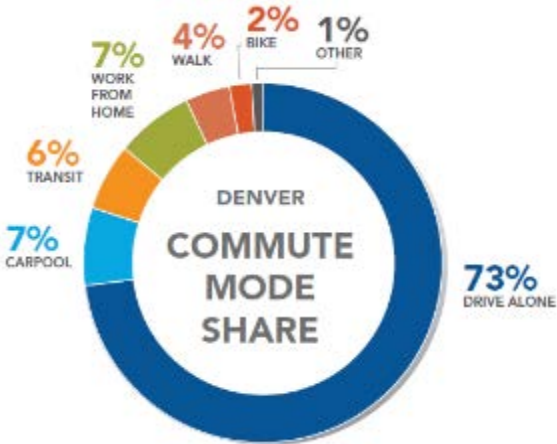
State of the System: Example Key Findings

- Rail service provides a fast and high-quality transit experience where available
- Many bus lines run only every 30-60 minutes outside of peak hours
- Less than 40% of Denver residents are within a 10 minute walk to all-day frequent service



State of the System: Example Key Findings

- 53% of Denver workers commute to another county for work
- Denver's share of commute trips on transit is lower than most peer cities
- Bicycle and pedestrian access to transit stops and stations is



Draft *Denver Moves: Transit* Goals



Enhance: Make it more appealing to take transit



Simplify: Make transit easier to use



Connect: Connect people and places to transit



Thrive: Improve community health and access to opportunity



Sustain: Support a transit system in Denver that will be successful over the long term

Schedule & Project Phases

VISION & GOALS

Our first task is to develop a vision and set of goals to guide project decisions and recommendations, with input from the Task Force, stakeholders, and the community.

August 2016 – February 2017

SCENARIO DEVELOPMENT

Working closely with the Blueprint Denver team, we'll establish scenarios that match future land uses and potential transit services, demonstrating different outcomes and the trade-offs they would require. These scenarios will be evaluated using a framework grounded in the vision and goals.

January – May 2017

TRANSIT PLAN

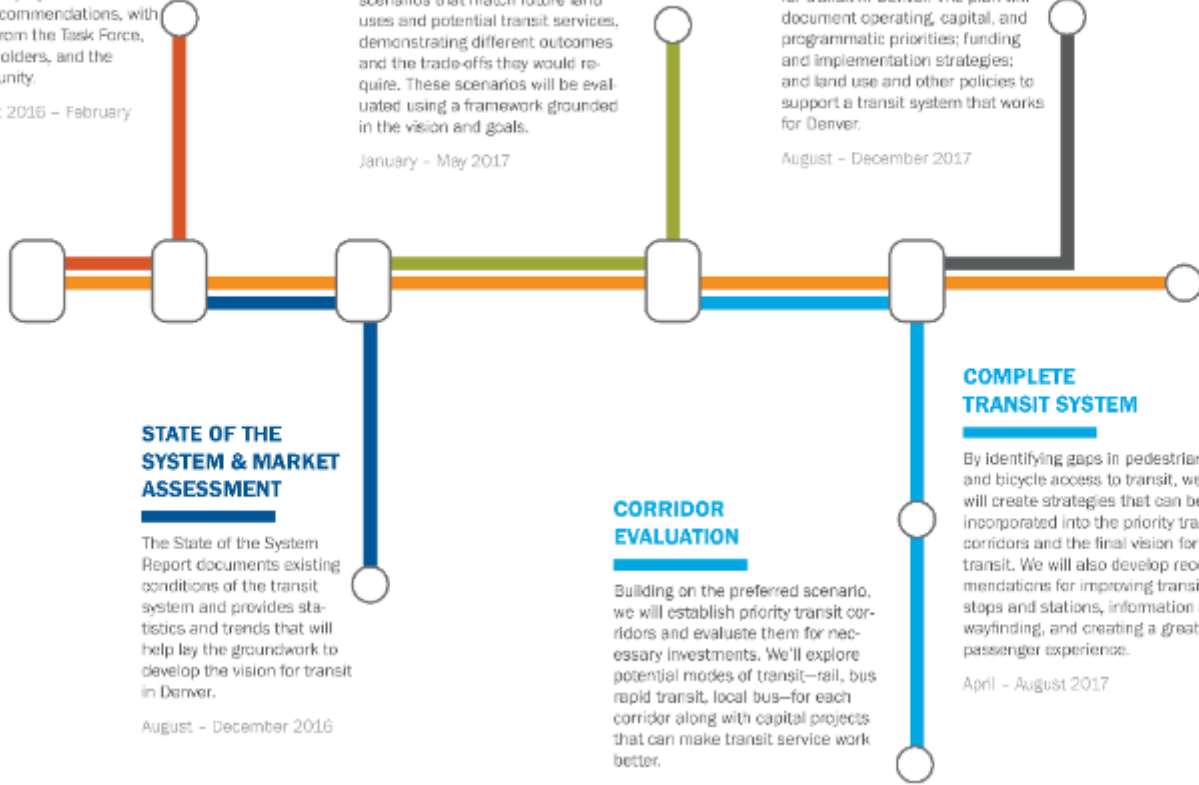
Denver Moves: Transit will establish a short- and long-term vision for transit in Denver. The plan will document operating, capital, and programmatic priorities; funding and implementation strategies; and land use and other policies to support a transit system that works for Denver.

August – December 2017

COMMUNITY ENGAGEMENT

Community engagement will occur throughout the project to guide the vision for transit in Denver and ensure the plan meets the community's needs.

Ongoing



STATE OF THE SYSTEM & MARKET ASSESSMENT

The State of the System Report documents existing conditions of the transit system and provides statistics and trends that will help lay the groundwork to develop the vision for transit in Denver.

August – December 2016

CORRIDOR EVALUATION

Building on the preferred scenario, we will establish priority transit corridors and evaluate them for necessary investments. We'll explore potential modes of transit—rail, bus rapid transit, local bus—for each corridor along with capital projects that can make transit service work better.

May – August 2017

COMPLETE TRANSIT SYSTEM

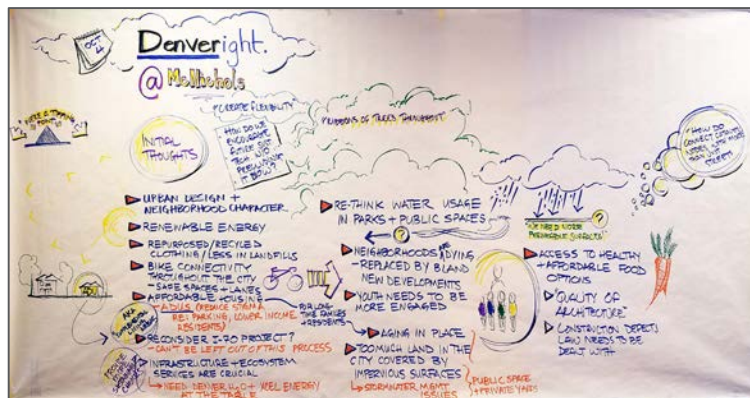
By identifying gaps in pedestrian and bicycle access to transit, we will create strategies that can be incorporated into the priority transit corridors and the final vision for transit. We will also develop recommendations for improving transit stops and stations, information and wayfinding, and creating a great passenger experience.

April – August 2017

What's Next for *Denver Moves: Transit?*

- Starting in April:
 - Neighborhood drop-in workshops
 - Build Your Own Transit System Tool
- Spring/Summer:
 - Development of corridor evaluation framework
 - Corridor screening/prioritization
- Task Force & Youth Stakeholder Group





Blueprint Denver

Plan Update

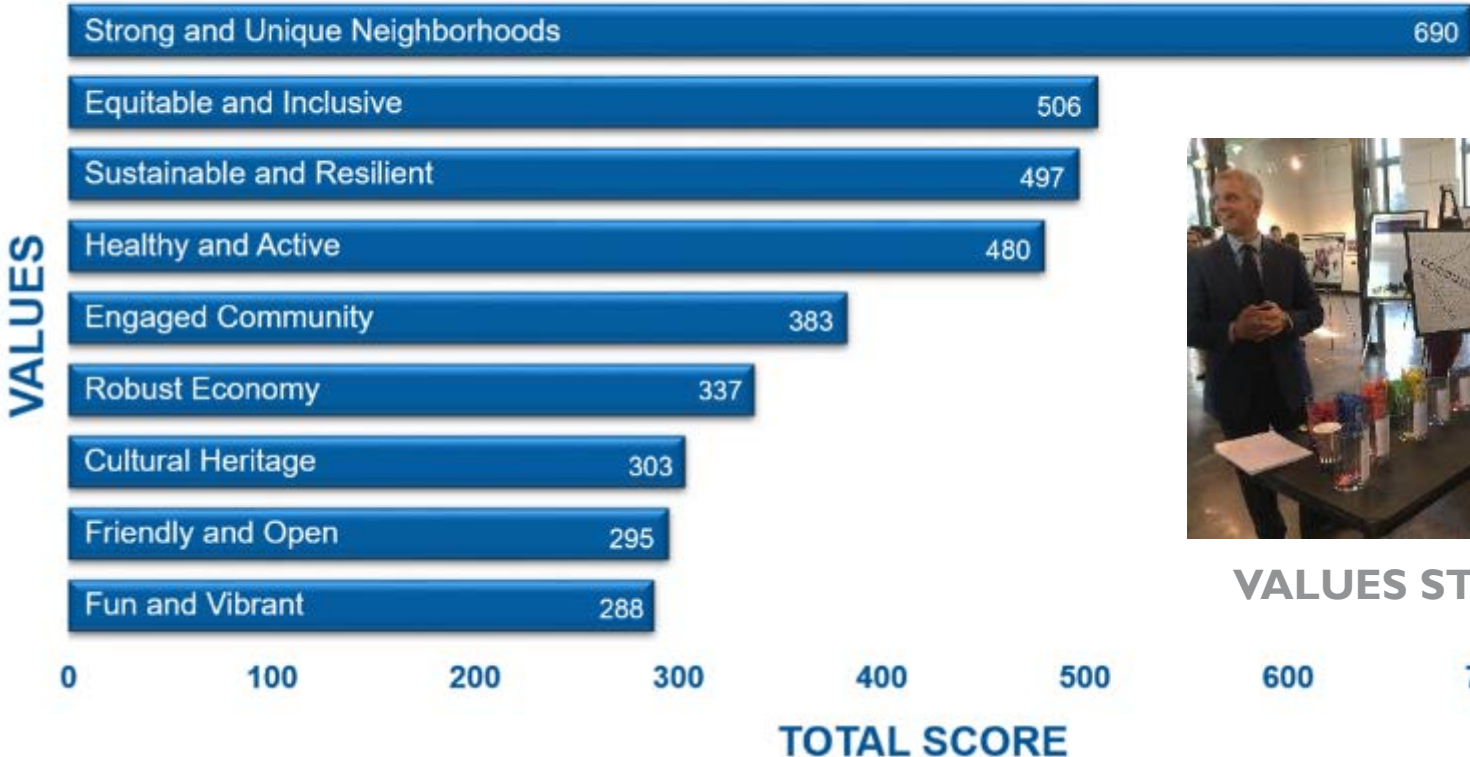
Blueprint Denver Update

planning process



Denverright Workshop: Blueprint Results

Community Values Prioritization



VALUES STATION

Blueprint Community Profile and Diagnostic Reports



Community Profile

Executive Summary

The Community Profile is designed to help residents and a cross-section of stakeholders understand the city's current status, challenges, and opportunities. It provides a comprehensive overview of the city's performance across various key areas, including:

- Quality of Life:** The overall quality of life in the city, including factors like safety, health, and education.
- Economic Development:** The city's economic performance, including job growth, income levels, and business investment.
- Infrastructure:** The state of the city's infrastructure, including transportation, utilities, and public services.
- Environment:** The city's environmental performance, including air quality, water resources, and green spaces.
- Equity and Inclusion:** The city's commitment to equity and inclusion, including efforts to address disparities and promote social justice.

Key Findings:

- Population Growth:** The city's population has grown significantly over the past decade, with a projected increase of 100,000 residents by 2020.
- Economic Resilience:** The city's economy has shown strong resilience, with job growth and income levels remaining high despite economic challenges.
- Infrastructure Investment:** Significant investment in infrastructure has been made, including transportation, utilities, and public services.
- Environmental Stewardship:** The city has made progress in environmental stewardship, including efforts to reduce greenhouse gas emissions and improve air quality.
- Equity and Inclusion:** The city has made progress in addressing disparities and promoting social justice, including efforts to improve access to education and healthcare.

Recommendations:

- Invest in Infrastructure:** Continue to invest in infrastructure, including transportation, utilities, and public services.
- Promote Economic Growth:** Continue to promote economic growth, including efforts to attract investment and create jobs.
- Improve Environmental Stewardship:** Continue to improve environmental stewardship, including efforts to reduce greenhouse gas emissions and improve air quality.
- Promote Equity and Inclusion:** Continue to promote equity and inclusion, including efforts to address disparities and improve access to education and healthcare.



Diagnostic

Executive Summary

The Diagnostic Report provides a detailed analysis of the city's performance across various key areas, including:

- Quality of Life:** The overall quality of life in the city, including factors like safety, health, and education.
- Economic Development:** The city's economic performance, including job growth, income levels, and business investment.
- Infrastructure:** The state of the city's infrastructure, including transportation, utilities, and public services.
- Environment:** The city's environmental performance, including air quality, water resources, and green spaces.
- Equity and Inclusion:** The city's commitment to equity and inclusion, including efforts to address disparities and promote social justice.

Key Findings:

- Population Growth:** The city's population has grown significantly over the past decade, with a projected increase of 100,000 residents by 2020.
- Economic Resilience:** The city's economy has shown strong resilience, with job growth and income levels remaining high despite economic challenges.
- Infrastructure Investment:** Significant investment in infrastructure has been made, including transportation, utilities, and public services.
- Environmental Stewardship:** The city has made progress in environmental stewardship, including efforts to reduce greenhouse gas emissions and improve air quality.
- Equity and Inclusion:** The city has made progress in addressing disparities and promoting social justice, including efforts to improve access to education and healthcare.

Recommendations:

- Invest in Infrastructure:** Continue to invest in infrastructure, including transportation, utilities, and public services.
- Promote Economic Growth:** Continue to promote economic growth, including efforts to attract investment and create jobs.
- Improve Environmental Stewardship:** Continue to improve environmental stewardship, including efforts to reduce greenhouse gas emissions and improve air quality.
- Promote Equity and Inclusion:** Continue to promote equity and inclusion, including efforts to address disparities and improve access to education and healthcare.

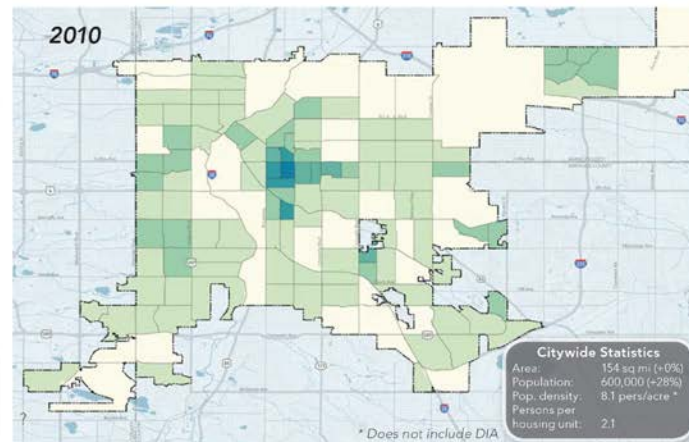
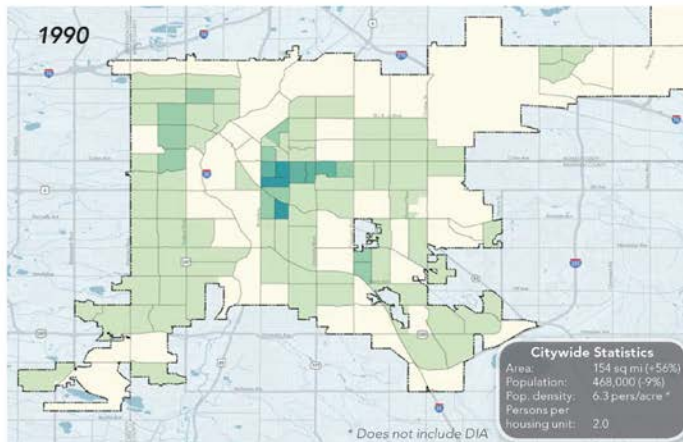
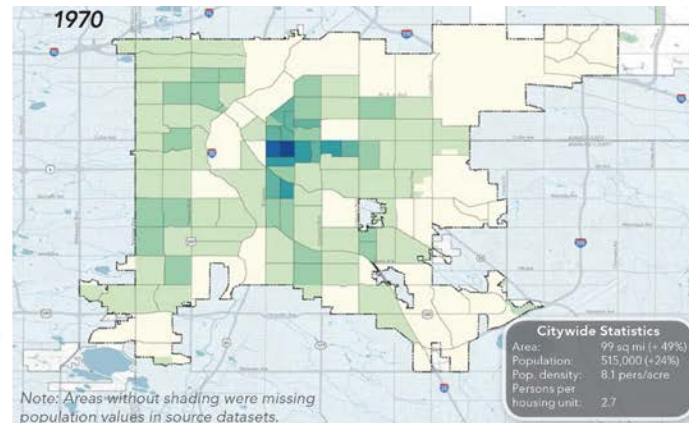
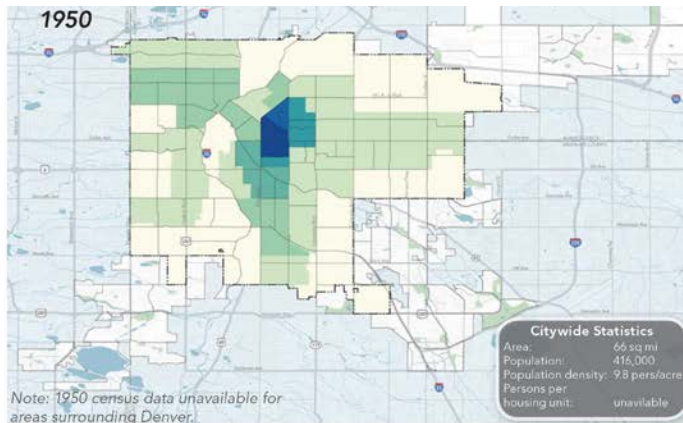
Key Metrics:

- Quality of Life:** 25% ↑
- Economic Development:** 5% ↓
- Infrastructure:** 15% ↓
- Environment:** 25% ↑
- Equity and Inclusion:** 0%
- Overall Performance:** 25% ↑

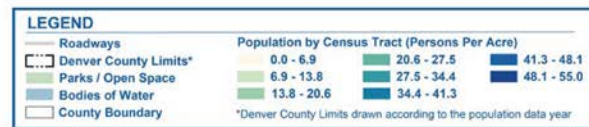
DENVER POPULATION DENSITY BY DECADE

Blueprint Community Profile

- Historical trends
 - Population
 - Employment
 - Development
- Peer city comparisons



Source: City and County of Denver; University of Minnesota-Minnesota Population Center NHGIS; U.S. Census Bureau



Blueprint Denver 2002 Diagnostic

- Measures how well the plan guided new development based on the plan's four key goals



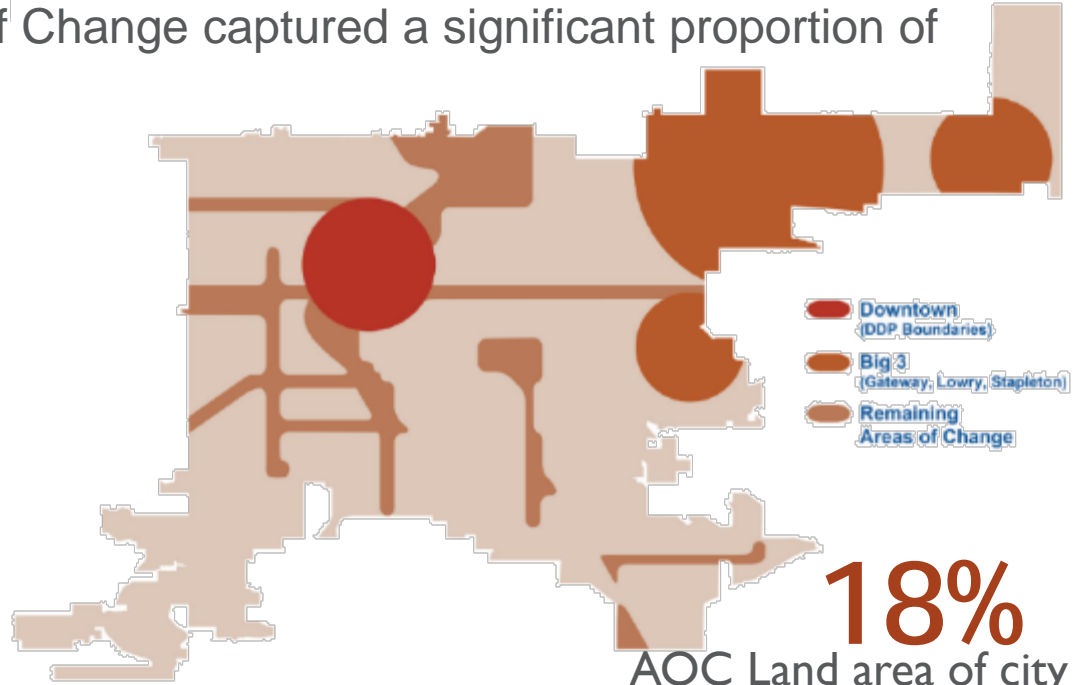
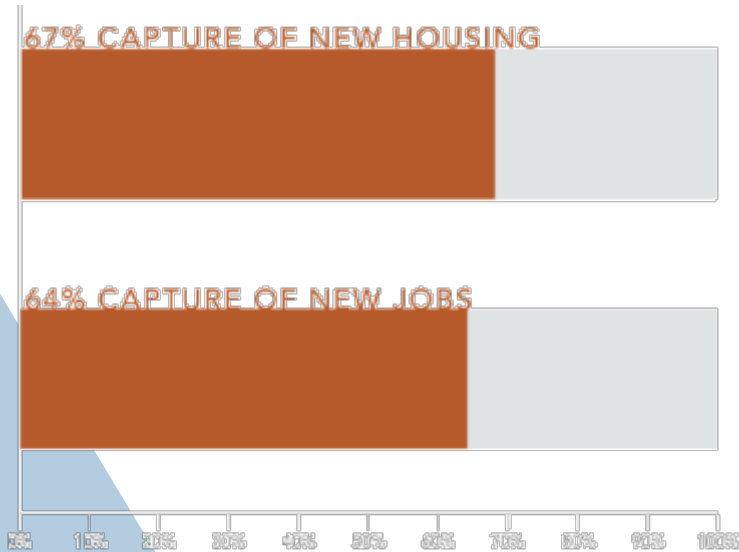
Denverright.
Blueprint Denver



Overview of 2002 Blueprint Denver Diagnostic

Goal 1: Direct growth to Areas of Change and manage and limit change in Areas of Stability

- Relative to land area, Areas of Change captured a significant proportion of investment and new growth.



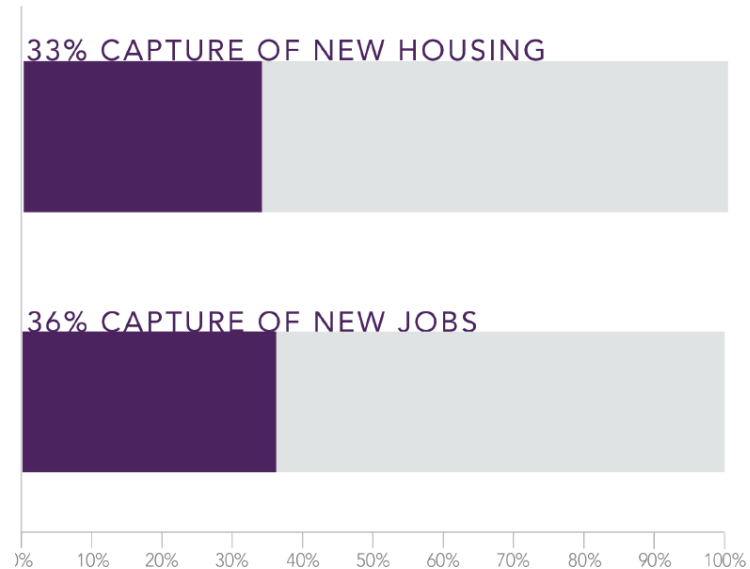
Overview of 2002 Blueprint Denver Diagnostic

Goal 2: Maintain the character of Areas of Stability yet accommodate some new development

- Areas of Stability experienced a relatively small proportion of investment related to new growth, especially relative to their land area.

82%

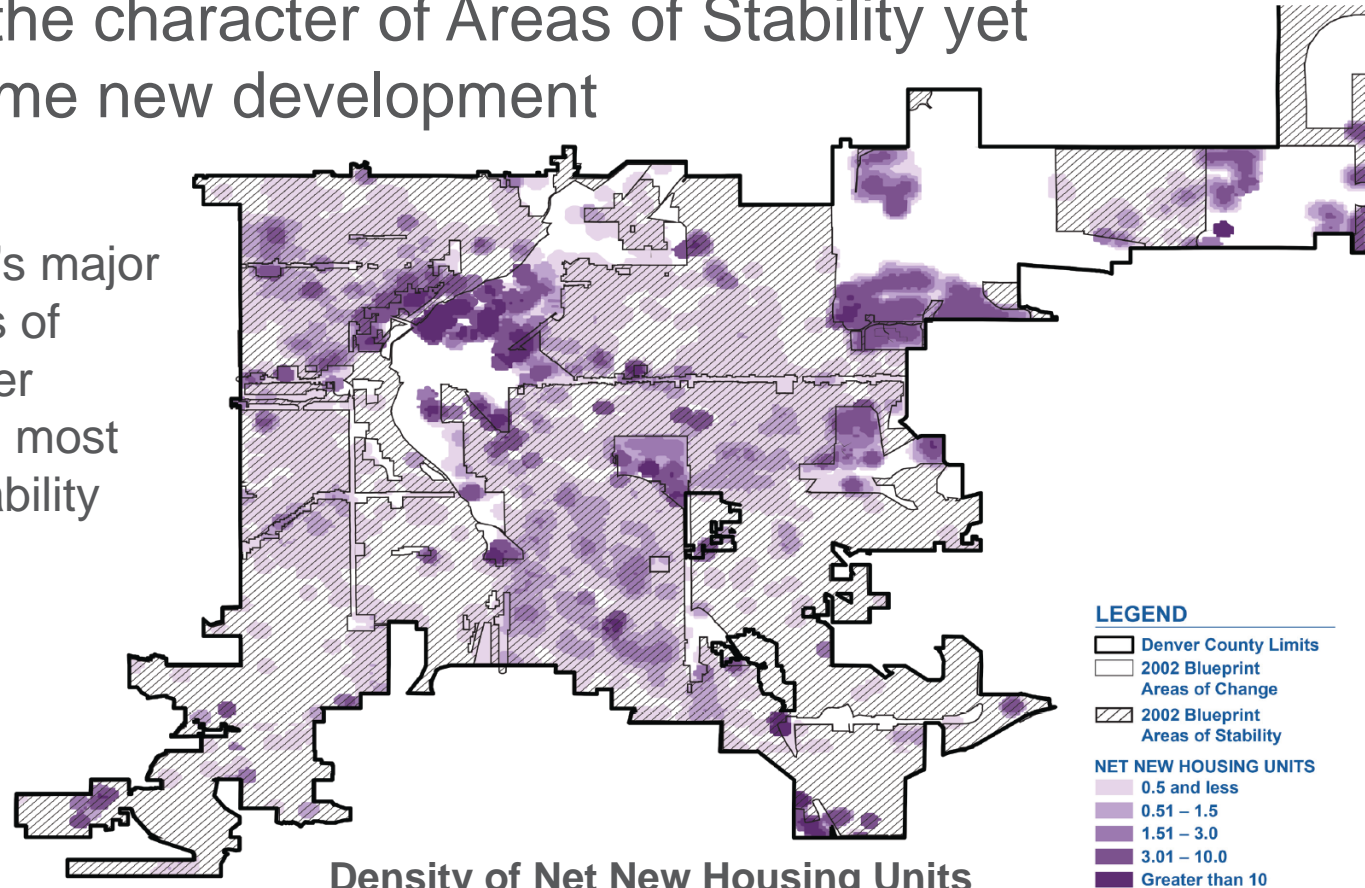
AOS Land area of city



Overview of 2002 Blueprint Denver Diagnostic

Goal 2: Maintain the character of Areas of Stability yet accommodate some new development

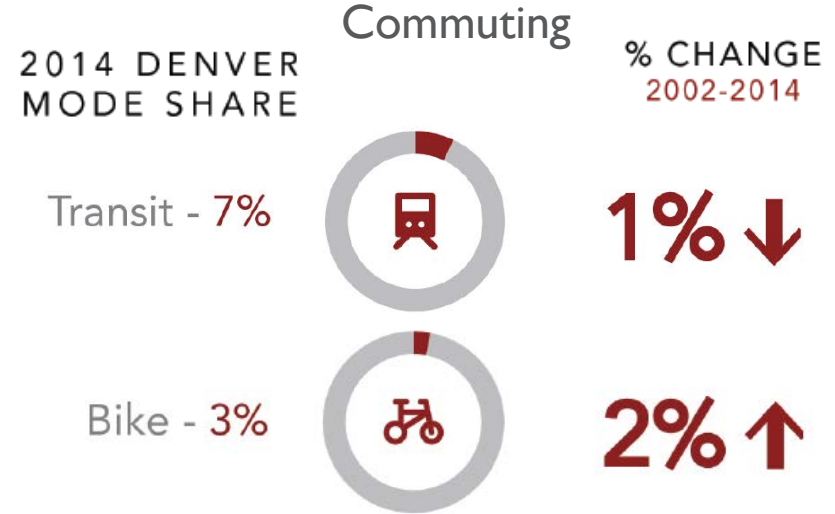
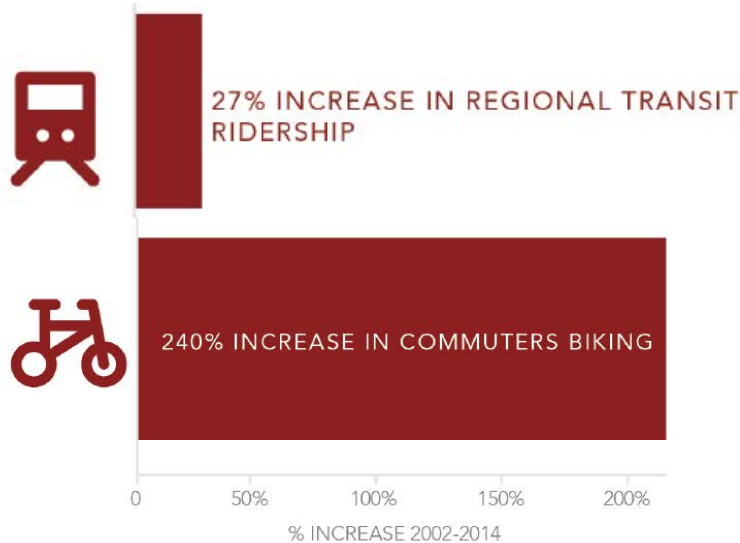
- Areas of Stability bordering Denver's major centers and Areas of Change saw higher development than most other Areas of Stability



Overview of 2002 Blueprint Denver Diagnostic

Goal 3: Improve the function of streets. Streets should be viewed as a means to move people not just cars.

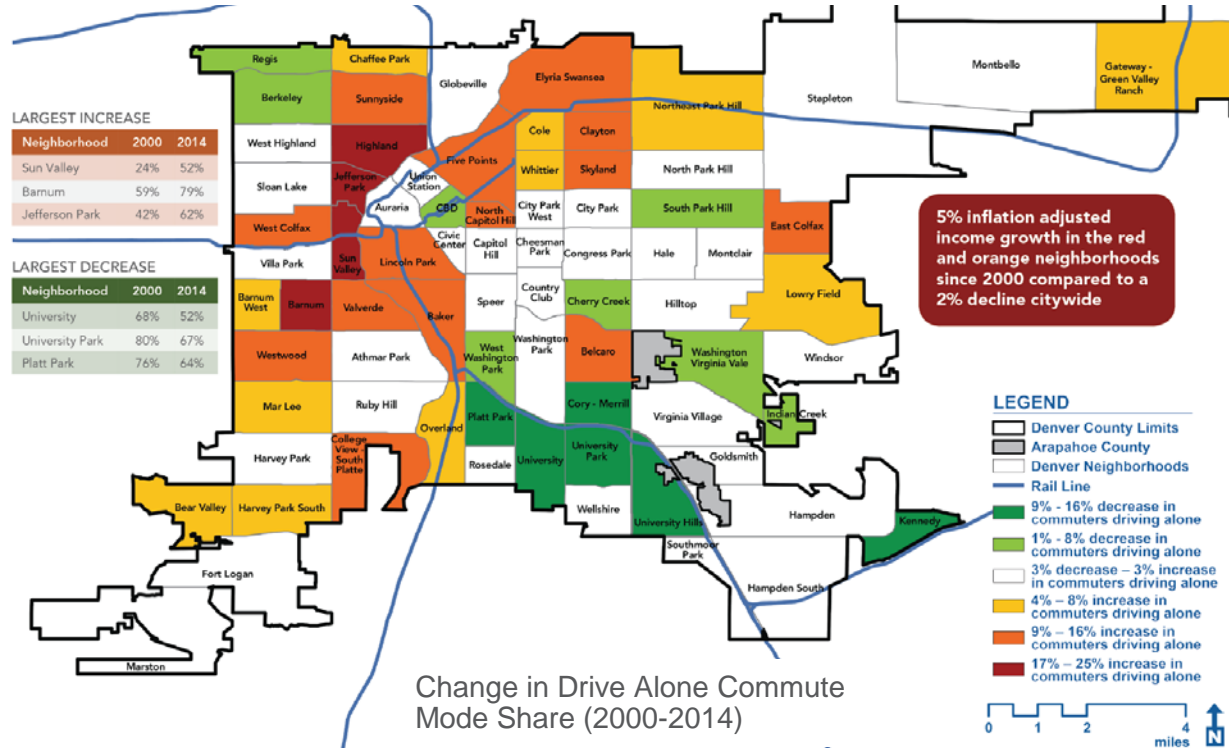
- Investments in transit and bicycle infrastructure have dramatically improved the function of the transportation network in certain locations, but are not system-wide.



Overview of 2002 Blueprint Denver Diagnostic

Goal 3: Improve the function of streets. Streets should be viewed as a means to move people not just cars.

- Although significant progress was made, Denver still has work to do when it comes to moving more people by more modes.



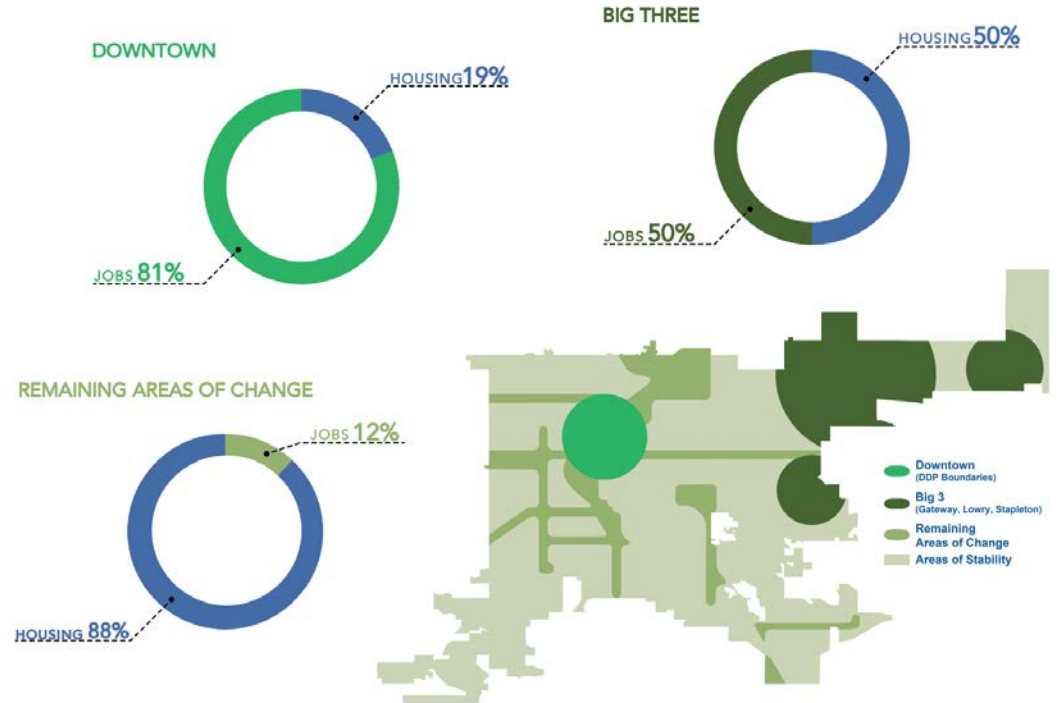
Change in Drive Alone Commute Mode Share (2000-2014)

Source: 2000 U.S. Census, 2010-2014 5-yr American Community Survey

Overview of 2002 Blueprint Denver Diagnostic

Goal 4: Promote mixed-use development and urban centers

- Significant opportunities remain to increase the mix of uses and walkability of station areas and urban centers



Source: City/County of Denver; US Census LEHD; Economic and Planning Systems

Blueprint Denver: What's coming next?

- Develop strategies for growth
- Spring Community Engagement Window:
 - How will Denver grow?
 - April 25th: Workshop
 - May/Early June: Take home and online versions of workshop exercise

Did you know?

BETWEEN 2010 & 2015
DENVER GREW BY OVER 1,000 PEOPLE PER MONTH

HOW DO YOU ENVISION
THE GROWTH OF
Denver?

COME BE A PART OF THE PLAN TO SHAPE OUR CITY

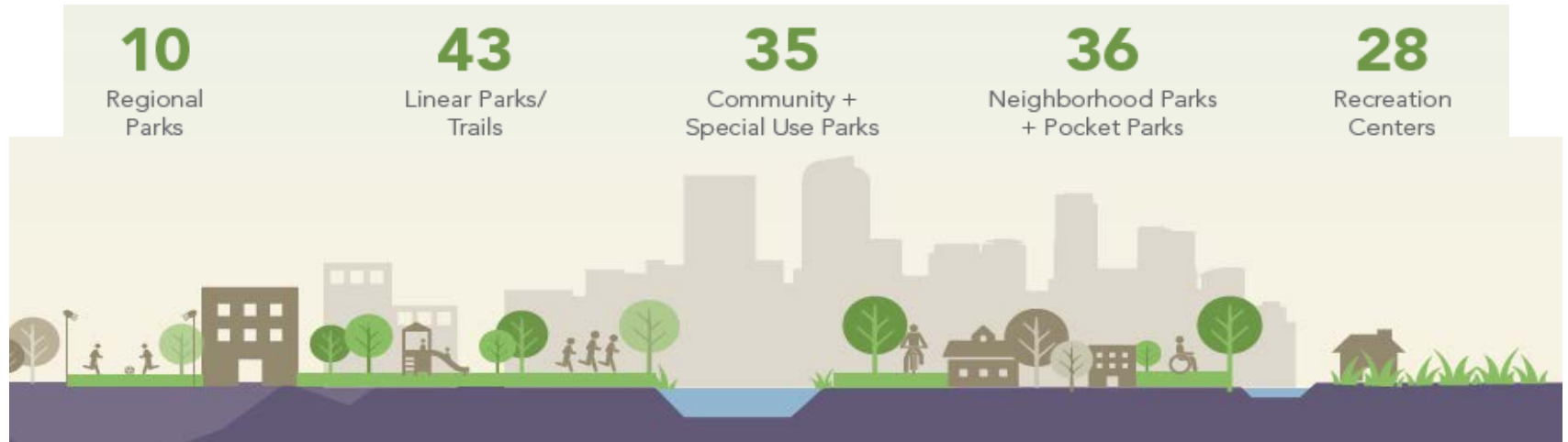
BLUEPRINT DENVER COMMUNITY WORKSHOP APRIL 25
WEST LEADERSHIP ACADEMY
951 Elati St 5:30 - 8:00 PM



Game Plan

Plan Update

Denver Parks and Recreation's Urban System Today




2003 GAME PLAN DIAGNOSTIC

KEY LESSONS LEARNED:

- Metrics to measure goals should be measurable and considered
- Consider physical resources and programming equally
- Goals set should be within DPR's jurisdiction to achieve
- Implementation plans should ensure resources are available to meet stated goals

RATING C Public Open Space/
Breathing Space 


RATING C Natural
Areas 

RATING B Canopy/
Street Trees 

RATING A Playing
Fields 

RATING C Recreation Programs
and Facilities 

RATING C A System of Green
Street Connections 

RATING B Healthy and Accessible
Urban Waterways 


RATING C Downtown
Core 

RATING B From Mountains
to the Plains 

RATING B Sustainable Designed
Environment

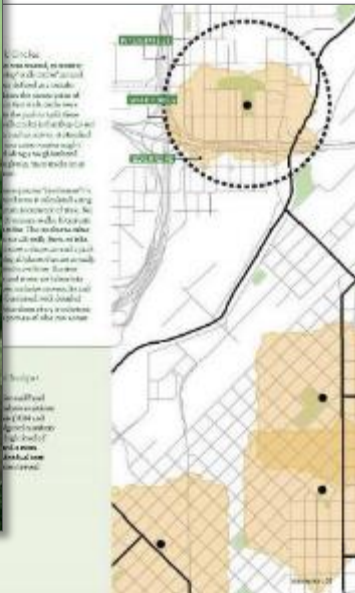
RATING B Park
Acreage 

RATING D Community
Scale Recreation 

RATING C Citywide and
Regional Trail
Connections 

RATING C Denver Municipal
Golf Courses 

Existing Conditions Report Key Findings



- Economic and Climate
- Equity and Access
- Economic and Organizational Health

Overview of Game Plan Community Outreach to Date

- Denveright Public Workshops meetings
- On-line Survey
- Participation at Community Events
- Game Plan Statistically Valid (Mailed) Survey
- 4 Task Force Meetings
- 3 Game Plan Public Open House Meetings
- 2nd On-Line and Hard Copy Survey (in progress)



Game Plan Outreach Results (to date)

8 Community Workshops with over **675** participants



23 Denveright Street Team Events



City-Wide mailed survey **1,000** responses

Planned Focus Group Engagement

- Asian Pacific Development Center (youth)
- Sun Valley Community
- Westwood Community
- DPR Game Plan Employee Ambassadors
- Game Plan Task Force / Cross Plan Co-Chair Group
- Denveright Crossover Plan Topics Workshops

Game Plan Guiding Principles



Every Drop

Denver Parks and Recreation will provide leadership to be a more resilient and environmentally-sustainable city.



Uniquely Denver

Denver Parks and Recreation will provide high-quality parks, facilities and programs that reflect Denver's community and cultural identity.



Every Person

DPR will ensure equity in the distribution of resources and access to our services. DPR will provide programs, places and facilities that promote healthy lifestyle options for all residents.



Every Dollar

Denver Parks and Recreation will model best practices in fiscal and resource management to ensure the long-term economic and operational health of the system.

Concepts Informing Goal Development

capture and reuse of water
 stormwater as a park amenity
 conservation of water and energy in all design and maintenance practices...
 water quality
 enhancing the city's urban forest
 preserving/protecting habitat
 parks as part of the flood solution
 tree species diversity
 multi-benefit solutions
 green infrastructure
 native/natural areas
 native and drought-tolerant species
 stewardship
 outdoor/environmental education



innovative, diverse programming
must address density and growth relative to new parks
 creative use of rights-of-way

physical access AND programming access
 don't lose sense of diversity by saying "all"
 training and development for staff
 safety comes from getting people to the parks

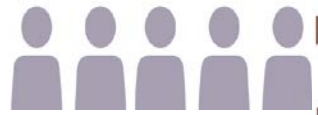
health and well-being



eliminate silos, work between departments on common goals
 partnerships are critical
 customer service
 strengthen foundations and foster friends-of organizations...
 address aging infrastructure
 efficiency
 use data to help set priorities
 planting and building with low maintenance burden in mind
 market our services in a modern way -- social media
 dedicated funding stream

community engagement
 great routes to parks and rec centers

equity



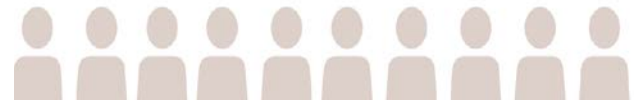
city beautiful transform to city functional
 balancing landscape history with modern needs/amenities
Need strong brand and tagline...
 sculpture + art gardens
 Extend the concept of place to parks
 more culture and arts programming!

KNOW you're in Denver

celebrate the system's historic traits, like parkways

signature elements in parks
 our outdoor lifestyle
 proud to say mountain parks are our backyard

sense of community - unique parks/ centers for unique neighborhoods



Neighborhood Parks + Streetscapes

Denver's neighborhood and pocket parks are as diverse as the city itself, yet they share the critical functions of being collective community space for recreation, social gathering and peaceful reflection in the outdoors.



- Healthy tree canopy to shade paving (1)
- Drought-tolerant plantings + stormwater infiltration (2)



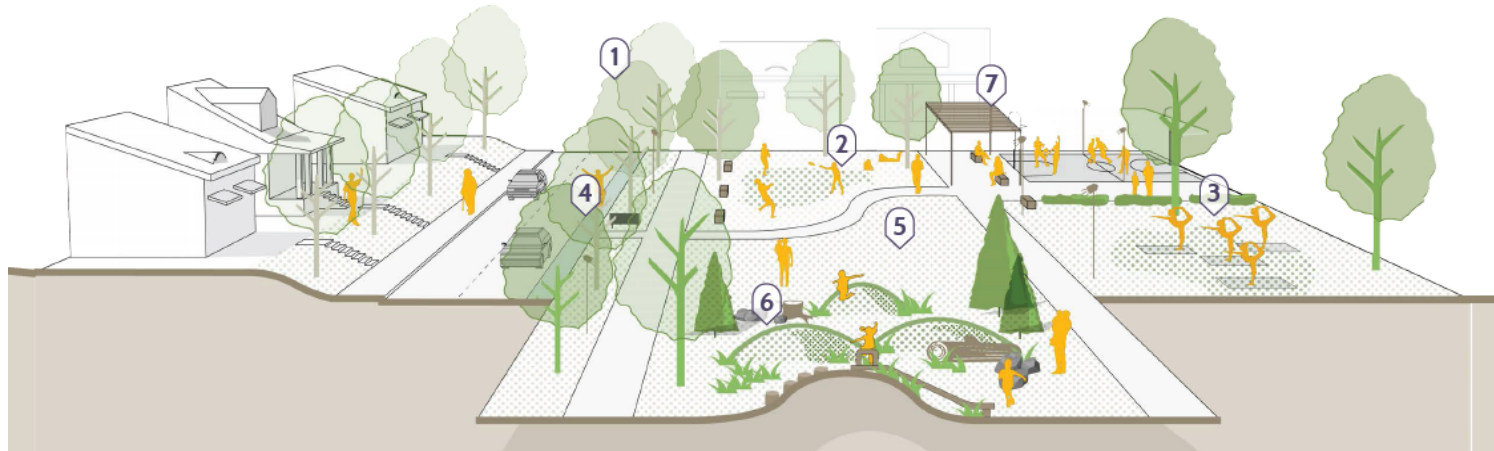
- Alternative activities + fitness programming (3)
- Welcoming frontage, crosswalk + wayfinding signage (4)



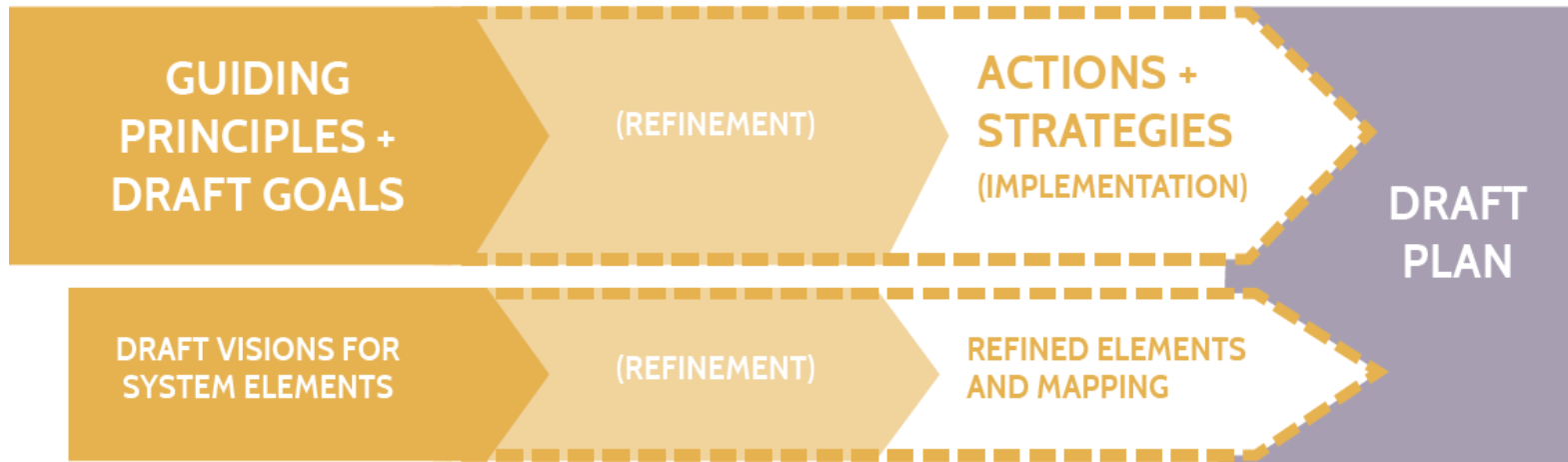
- Low-mow + drought-tolerant turf (5)
- Neighborhood partnerships for maintenance



- Unique playgrounds to fit neighborhood context (6)
- Unique social spaces (7)



Input and the Path Ahead

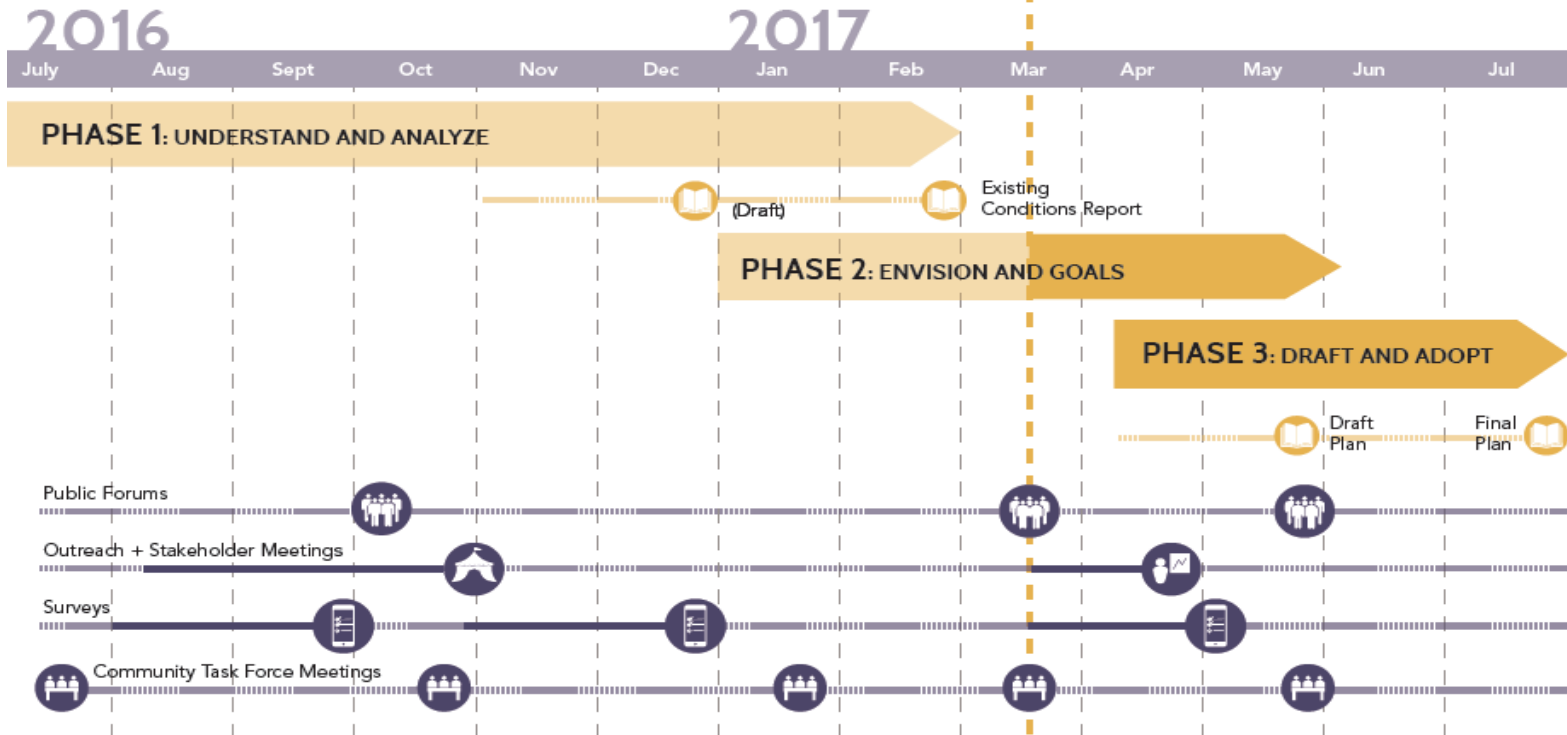


NEXT TWO MONTHS

*Community Meetings, Online and Paper Surveys, Staff Meetings
Coordination with Denveright Plans*

Schedule Update

We are here!



What's Coming Next?

- Blueprint Denver workshop April 25
- Transit Plan neighborhood drop-in meetings this spring
- Game Plan survey this spring

Please continue to help us get the word out!

www.denvergov.org/denverright

Councilmember Task Force Reps

- What have you found most interesting or surprising so far?
 - Denver Moves: Pedestrians and Trails Task Force
 - CMs Kashmann and Black
 - Denver Moves: Transit Task Force
 - CMs Kniech and Flynn
 - Blueprint Task Force
 - CMs Susman and Herndon
 - Game Plan Task Force
 - CMs Clark and Ortega

Likes

What do you like most about Denver? (top 5 responses)

