

Denver Parks & Recreation

Montbello Open Space Park

A Project with Environmental
Learning for Kids (ELK) and the
Trust for Public Land (TPL)

Montbello Open Space Park

BR14-0838

Approves the purchase of a 5 acre parcel of land at 12680 Albrook Drive at a cost of \$170,000 and in cooperation with Trust for Public Lands and Environmental Learning for Kids, to provide a site for environmental education, stewardship of natural resources and training in leadership and service, in Council District 11.

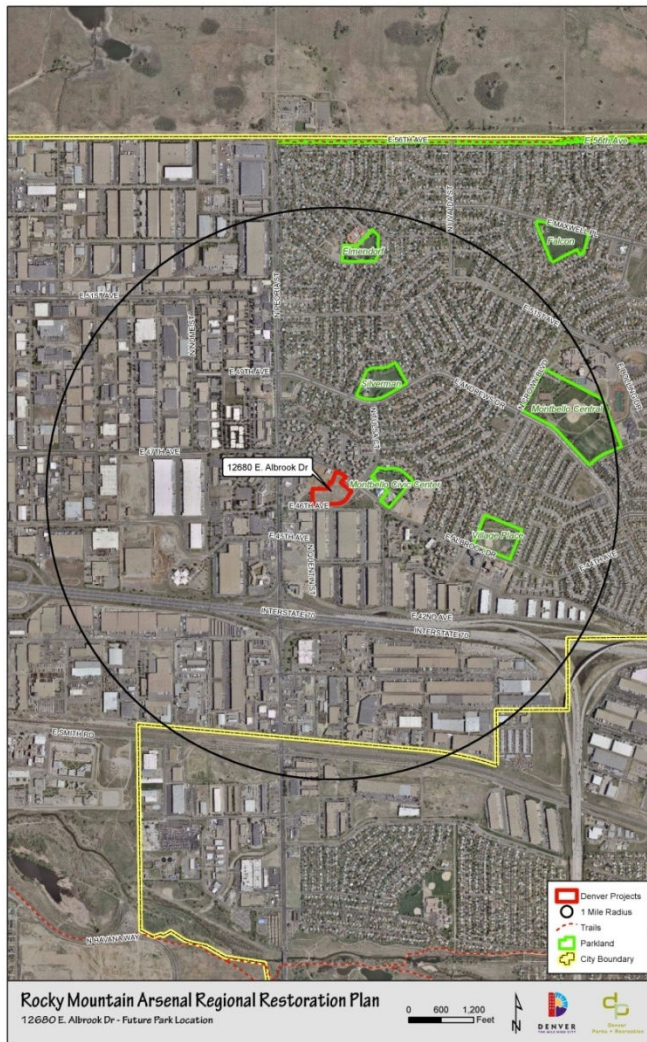
BR14-0839

Approves the appropriation of \$170,000 from State Conservation Trust Fund (SCTF) contingency to support the acquisition of the Montbello Open Space at 12680 Albrook Drive in partnership with the Trust for Public Land (TPL) and Environmental Learning for Kids (ELK) to develop an environmental learning center to be operated by ELK.

BR14-0840

Approves leasing a 5 acre parcel of land at 12680 Albrook Drive for 50 years to Environmental Learning for Kids, to provide a site for environmental education, stewardship of natural resources and training in leadership and service. The agreement provides for the construction of an education center, storage building(s) and appropriate appurtenances.

Montbello Open Space Park



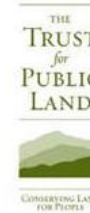
Location:

12680 E. Albrook Dr.

NE Denver- Montbello
Community

¼ mile north from the
intersection of I70 and
Peoria

Montbello Open Space Park: Purpose



Restoring and protecting 4.5 acres of undeveloped land to a shortgrass prairie.

Developing 1 acre into an Environmental Education Center

PrairieHabitat Area
MONTBELLO OPEN SPACE PARK

Montbello Open Space Park: Funding

Budget:

CCD	\$170,000 (SCTF-Contingency)
TPL	\$330,000
GOCO	\$350,000
ELK	<u>\$410,000</u>
	\$1,260,000

Montbello Open Space Park: Lease

- Property becomes city owned park land and open to the public.
- ELK retains a 50-year lease to operate and maintain the natural area and the future learning center.
- All operating and maintenance costs are provided by ELK.
- Funding for park design and development will be raised by ELK.

Montbello Open Space Park

QUESTIONS?