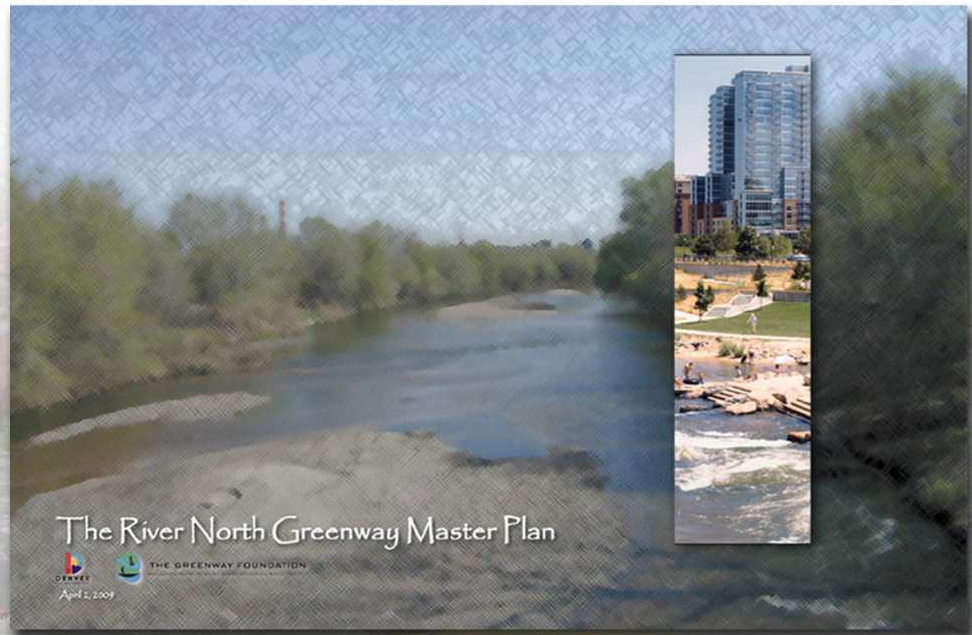


# The South Platte River Vision Implementation Plan

November 16, 2010





# River Vision Implementation Plan

## Mission Statement

- ◊ Maximize the HEALTH and SAFETY of the River corridor for Greenway users.
- ◊ Improve ECOLOGICAL HEALTH and SUSTAINABILITY of the River corridor.
- ◊ Enhance VISIBILITY and ACCESSIBILITY to the River corridor for the public.
- ◊ Continue the ENVIRONMENTAL and ECONOMIC transformation of the River corridor (Green = Green)
- ◊ Identify and expand RESOURCE OPPORTUNITIES and PARTNERSHIPS to implement the River corridor vision.



# Priority Project Recommendations (Years 1-5)

- ◊ Overland Regional Park (Southern Platte Valley)
- ◊ Central Greenway Corridor (Johnson-Habitat Park / Vanderbilt Park)
- ◊ Southern Urban Greenway Corridor (Sun Valley)
- ◊ Central Platte Valley Event District
- ◊ Northern Urban Greenway Corridor (River North Park/Trail/Bridge)



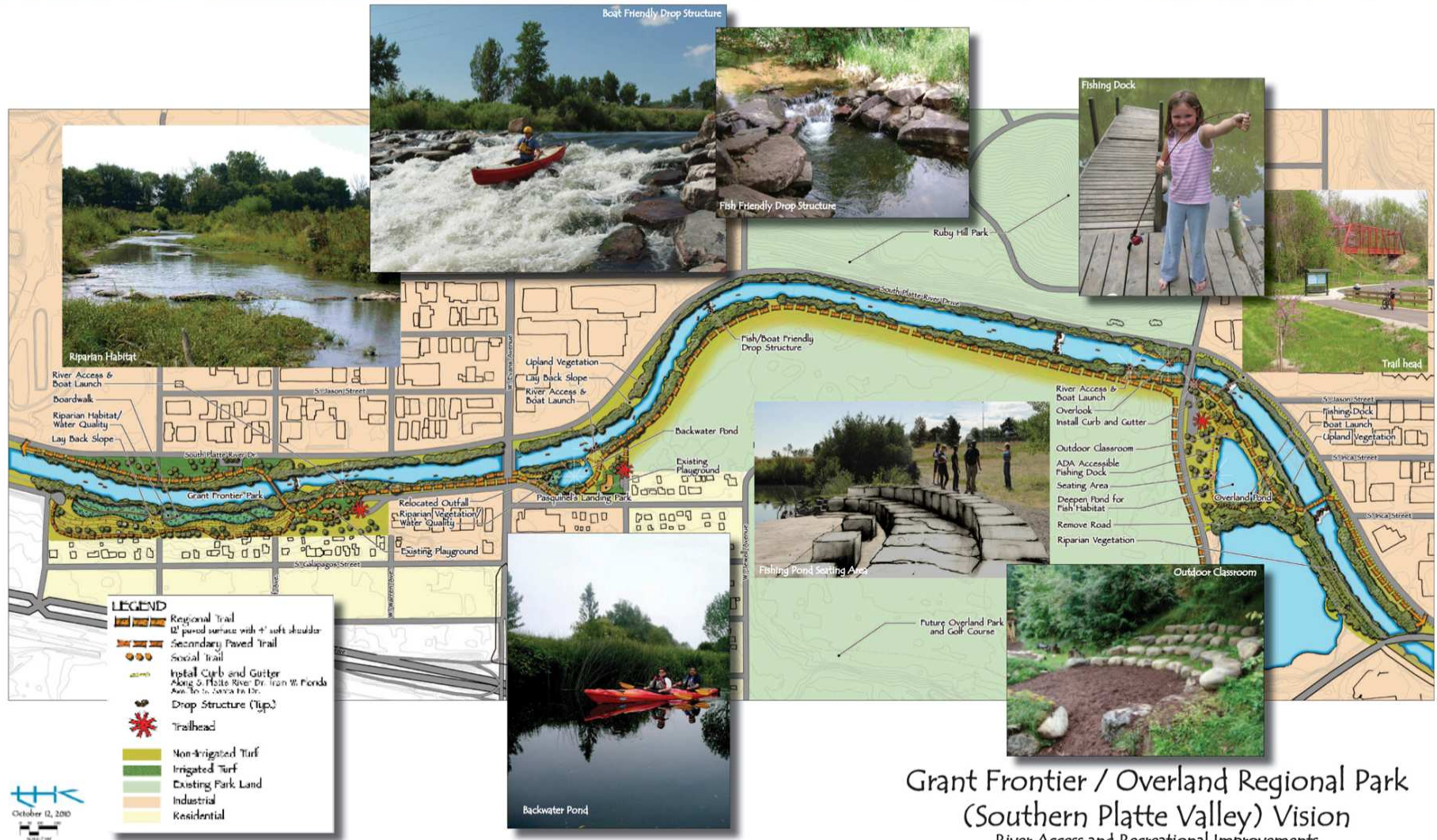


# Overland Regional Park (Southern Platte Valley)

- Provide widened bike route and adjacent walk path
  - Increase access opportunities, including snow storage area across River from Pasquinel's Landing
  - Grant Frontier Park
    - Add River Edge access and boat put in on east side of River
    - Undertake boating upgrades/improvements
    - Install native vegetation
    - Create riparian/wetland/riverbank/water quality enhancements
  - Pasquinel's Landing Park
    - Install native vegetation
    - Create riparian/wetland/riverbank/water quality enhancements
    - Add backwater pool and emergent bench
  - Ruby Hill Park
    - Improve River edge access and add boat put-in
  - Overland Pond Park
    - Close South Platte River Drive between Overland Pond Park and Aqua Golf Driving Range/Miniature Golf
    - Reduce/soften banks of the River wherever possible between W. Florida Avenue and Santa Fe Drive
    - Create riparian/wetland/riverbank/water quality enhancements
    - Native vegetation
    - Install curb and gutter on Platte River Drive West between Santa Fe Drive and W. Florida Avenue
- 



# Overland Regional Park (Southern Platte Valley)



Grant Frontier / Overland Regional Park  
(Southern Platte Valley) Vision  
River Access and Recreational Improvements



# Overland Regional Park (Southern Platte Valley)





# Overland Regional Park (Southern Platte Valley)





# Overland Regional Park (Southern Platte Valley)

## Estimated Costs

Grant Frontier Park	\$1,599,504.08
Pasquinel's Landing Park	\$ 501,829.33
Overland Pond Park	\$2,431,882.00
South Platte River Trail	\$1,997,910.89
River Channel Improvements	\$7,528,310.00
Subtotal	\$14,069,436.31
10% Contingency	\$ 1,406,943.63
<b>TOTAL</b>	<b>\$15,476,379.94</b>





# Central Greenway Corridor Johnson-Habitat / Vanderbilt Parks

- **Provide widened bike route and adjacent walk path wherever possible along the River**

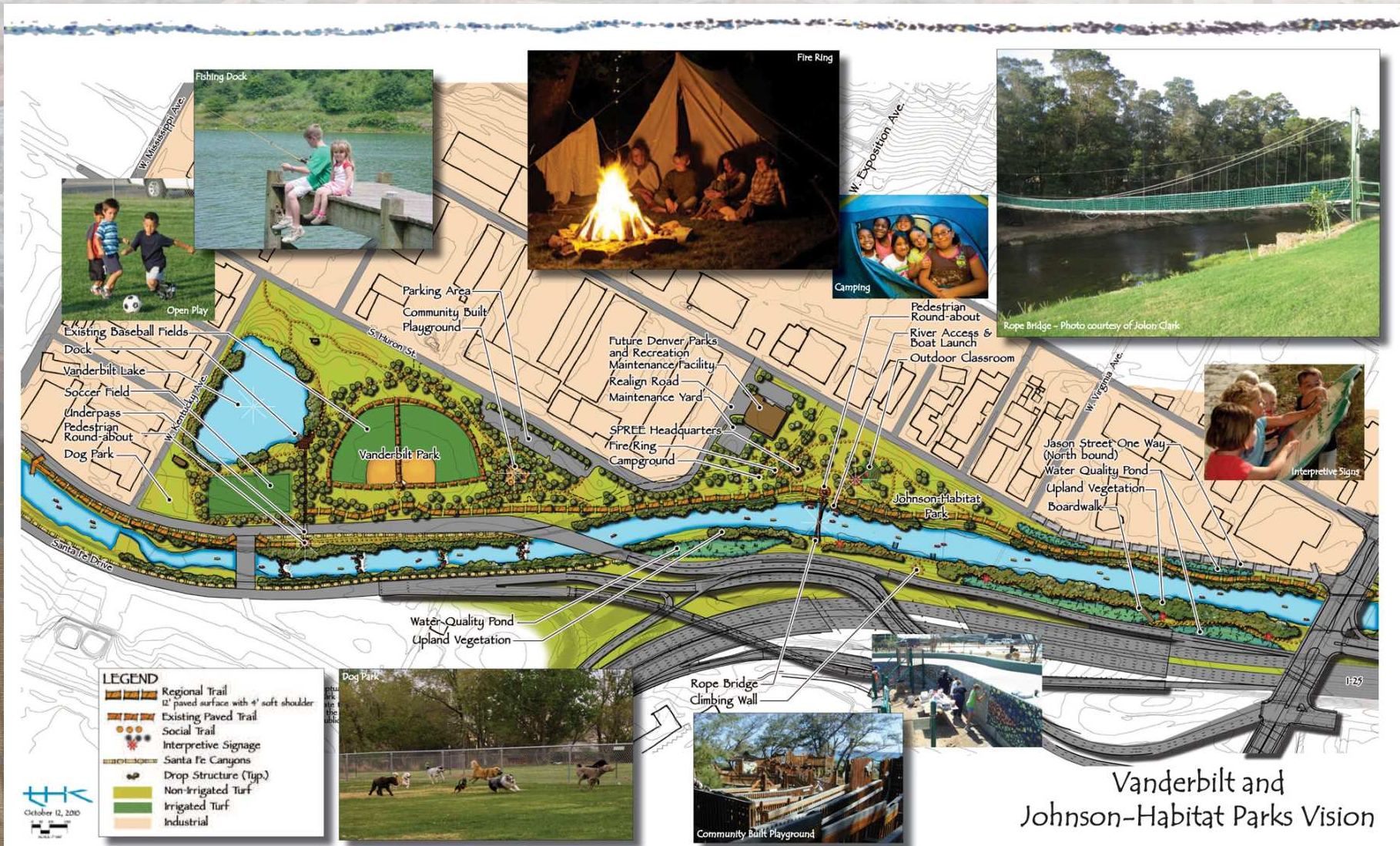
- **Enhance trail from Johnson-Habitat Park to Phil Milstein Park, including redesign of S. Jason Street south of W. Alameda Avenue**

## • **Johnson-Habitat Park**

- **Relocate W. Exposition Avenue to the south of current Denver Animal Shelter (future Parks maintenance facility) and connect to S. Huron Street**
- **Close/remove W. Exposition Avenue between Johnson-Habitat Park and current Denver Animal Shelter between S. Jason Street and Santa Fe Drive**
- **Close current W. Exposition Avenue and access road to Santa Fe Drive**
- **Realign trail under Santa Fe Drive into Vanderbilt Park traveling downstream to Johnson-Habitat Park**
- **Connect Vanderbilt Park with Johnson-Habitat Park**
- **Improve landscaping/design of Johnson-Habitat Park, including campsites**
- **Enhance Johnson-Habitat Park and Vanderbilt Park**
- **Undertake community-built project**



# Central Greenway Corridor Johnson-Habitat / Vanderbilt Parks



Vanderbilt and  
Johnson-Habitat Parks Vision

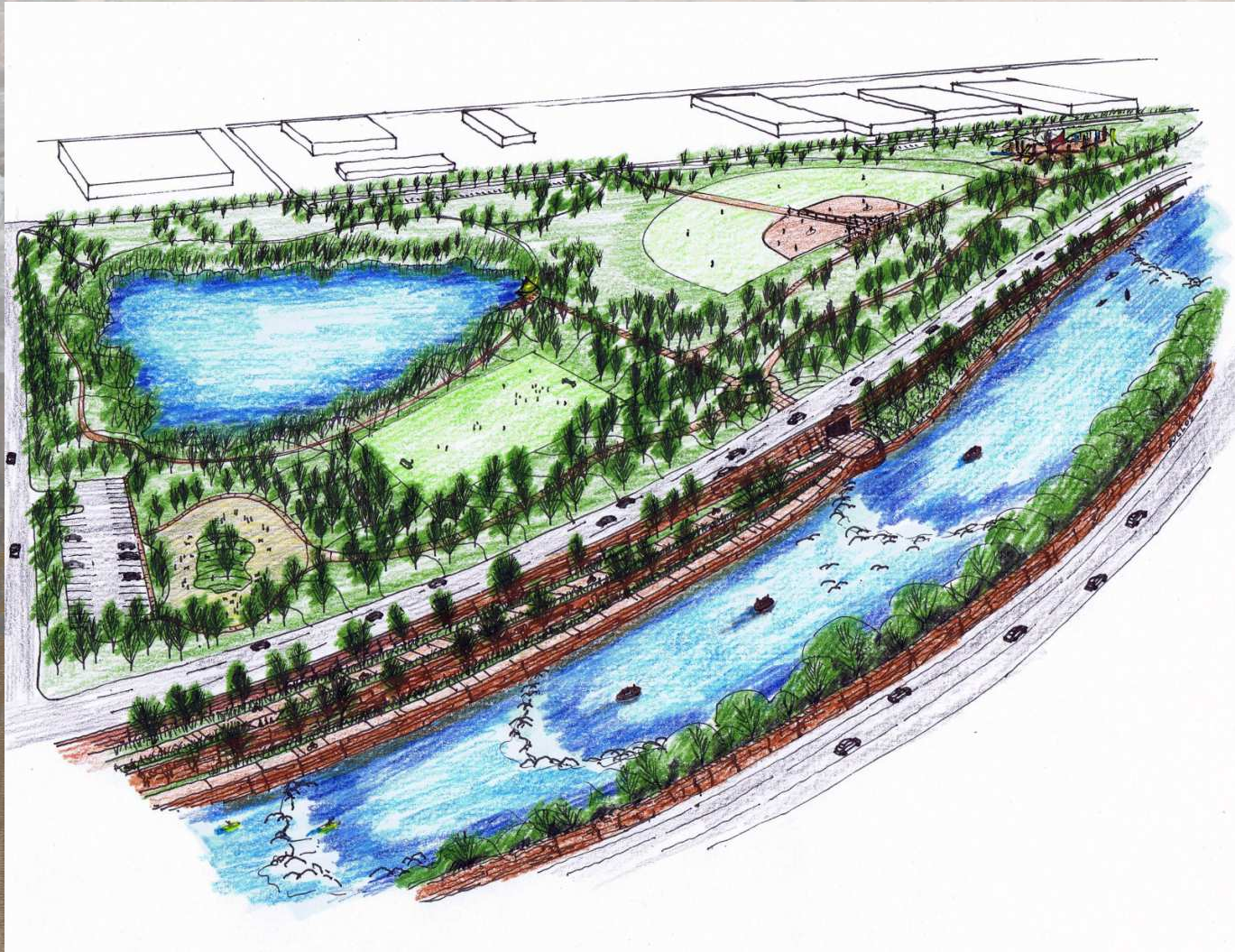


# Central Greenway Corridor Johnson-Habitat / Vanderbilt Parks





# Central Greenway Corridor Johnson-Habitat / Vanderbilt Parks





# Central Greenway Corridor Johnson-Habitat / Vanderbilt Parks

## Estimated Costs

Vanderbilt Park	\$2,337,833.00
Johnson-Habitat Park	\$3,218,264.89
South Platte River Trail	\$3,367,431.95
River Corridor Improvements	\$10,010,465.17
Subtotal	\$18,933,995.01
10% Contingency	\$ 1,893,399.50
<b>TOTAL</b>	<b>\$20,827,394.51</b>

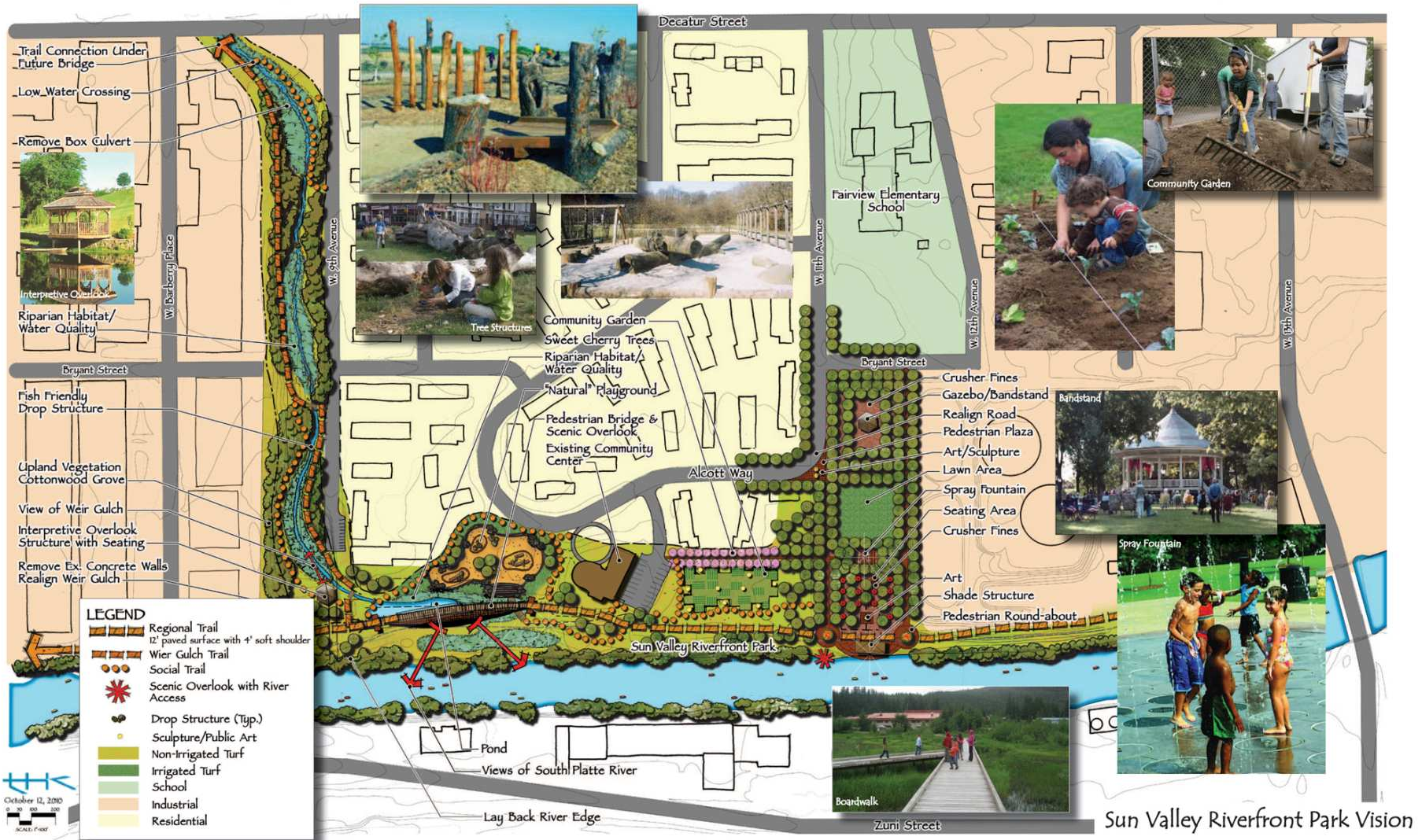


# Southern Urban Greenway Corridor (Sun Valley)

- **Provide widened bike route and adjacent walk path wherever possible along the River**
- **Enhance Weir Gulch/South Platte River Trail**
- **Proposed Sun Valley Riverfront Park**
  - **Create improved park and riverbank improvements adjacent to Sun Valley homes, including large community-built playground**
  - **Enhance existing DHA Sun Valley park**
  - **Acquire additional land for Sun Valley park**
  - **Undertake community-built project**



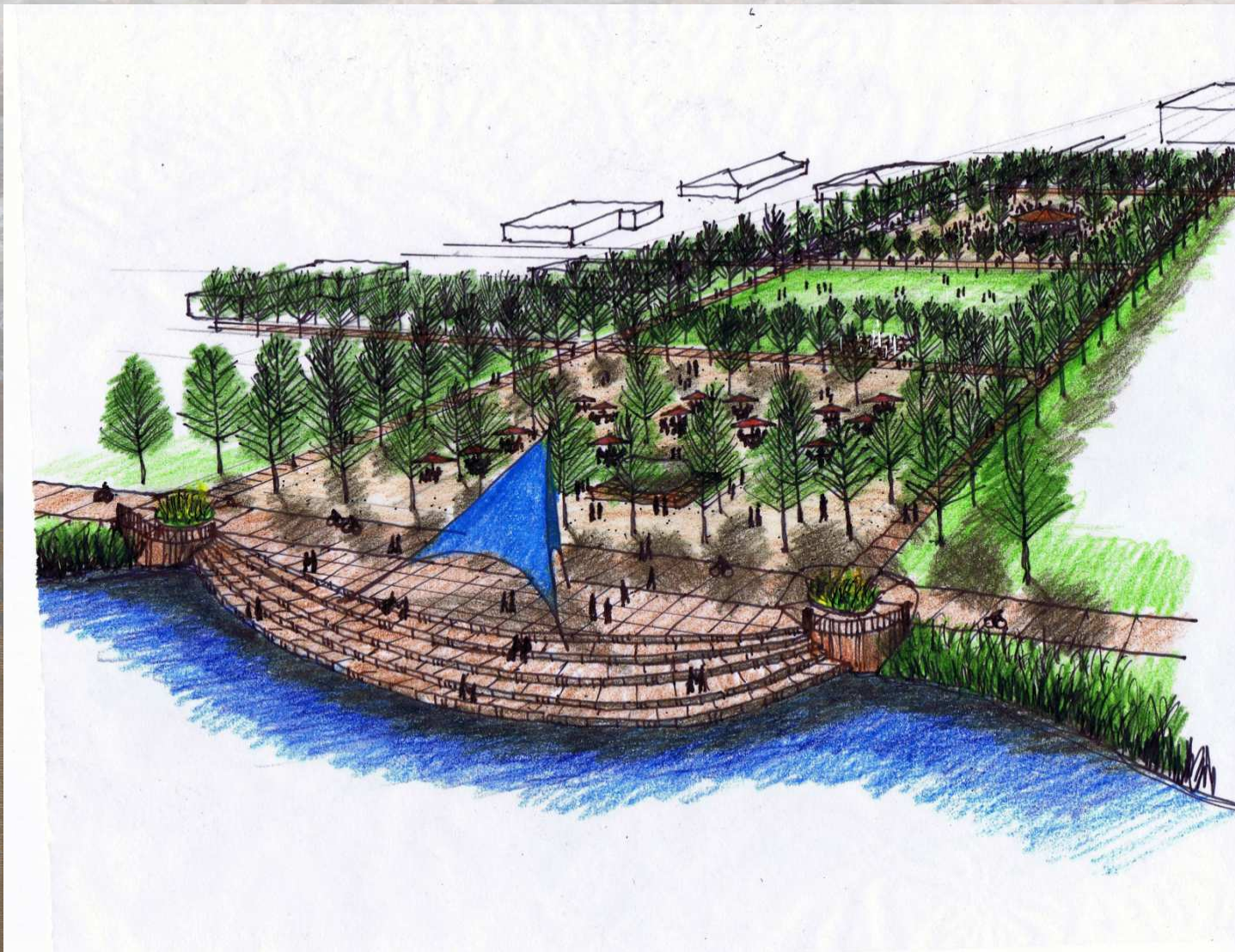
# Southern Urban Greenway Corridor (Sun Valley)



Sun Valley Riverfront Park Vision

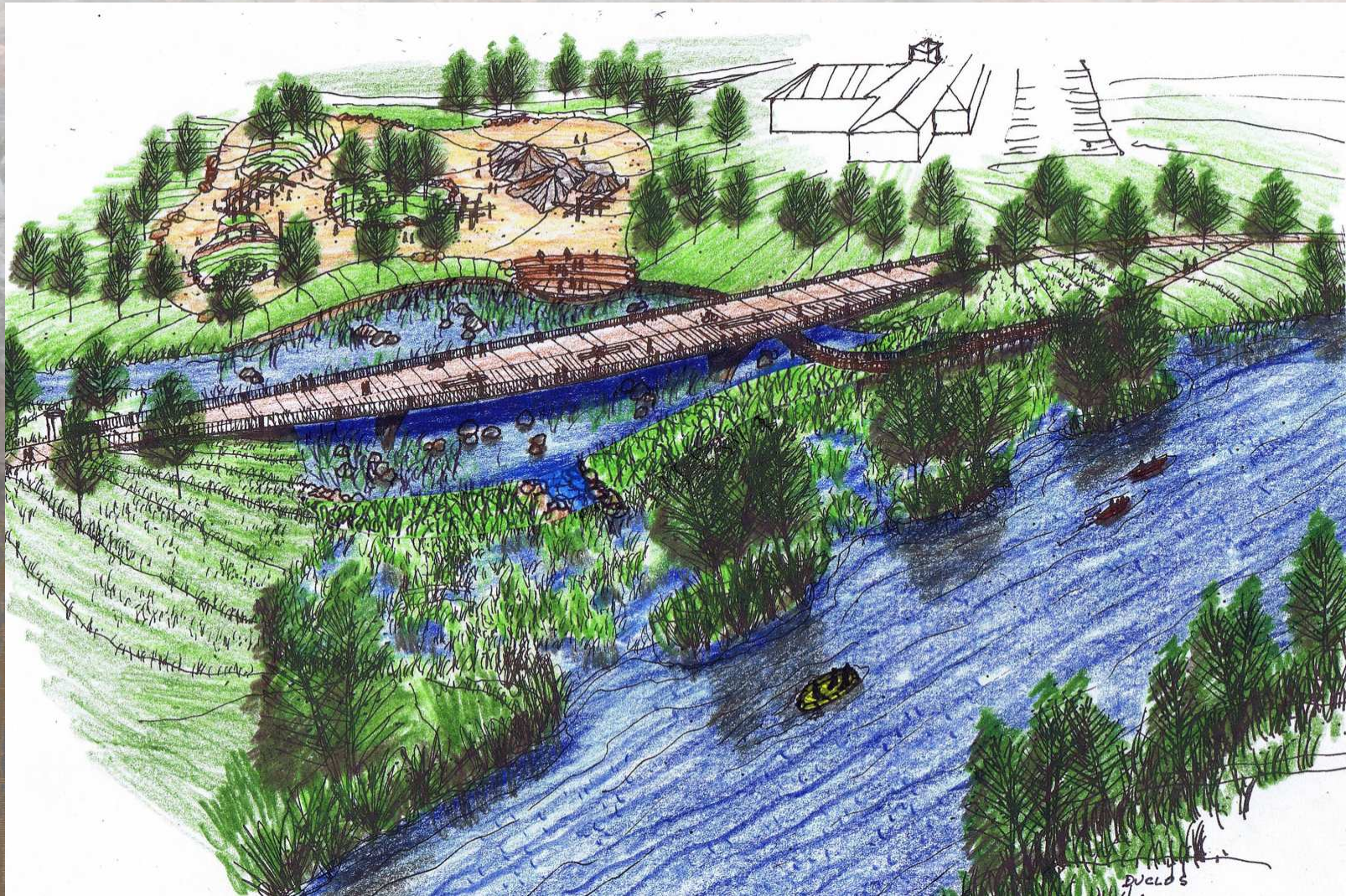


# Southern Urban Greenway Corridor (Sun Valley)





# Southern Urban Greenway Corridor (Sun Valley)





# Southern Urban Greenway Corridor (Sun Valley)

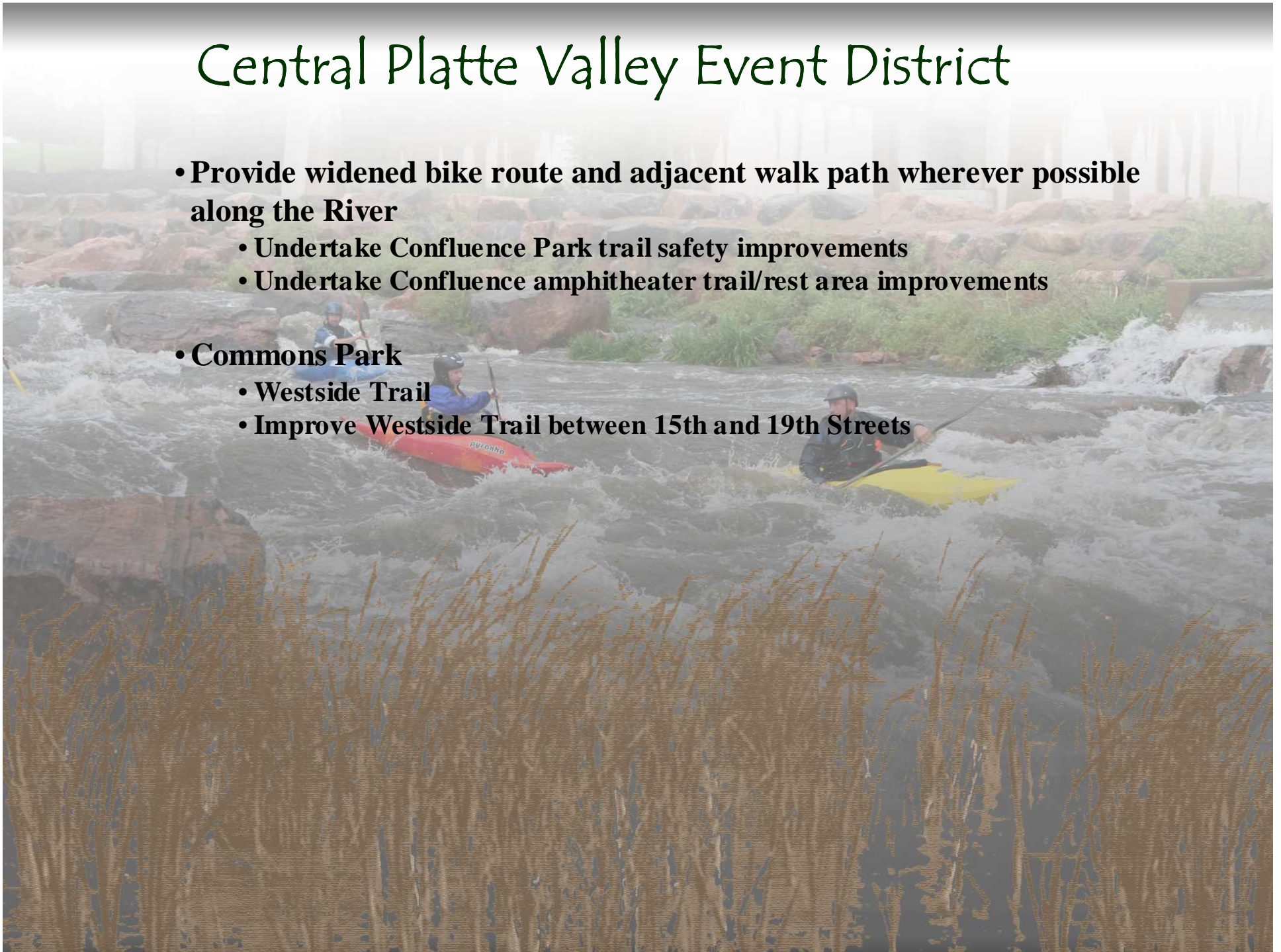
## Estimated Costs

Weir Gulch Improvements	\$6,421,049.92
Pedestrian Bridge and Overlook	\$1,500,000.00
Park Improvements	\$1,164,643.20
Community Plaza	\$2,238,188.89
South Platte River Trail	\$2,349,880.24
River Corridor Improvements	\$2,193,670.00
Subtotal	\$15,867,432.25
10% Contingency	\$ 1,586,743.22
<b>TOTAL</b>	<b>\$17,454,175.47</b>



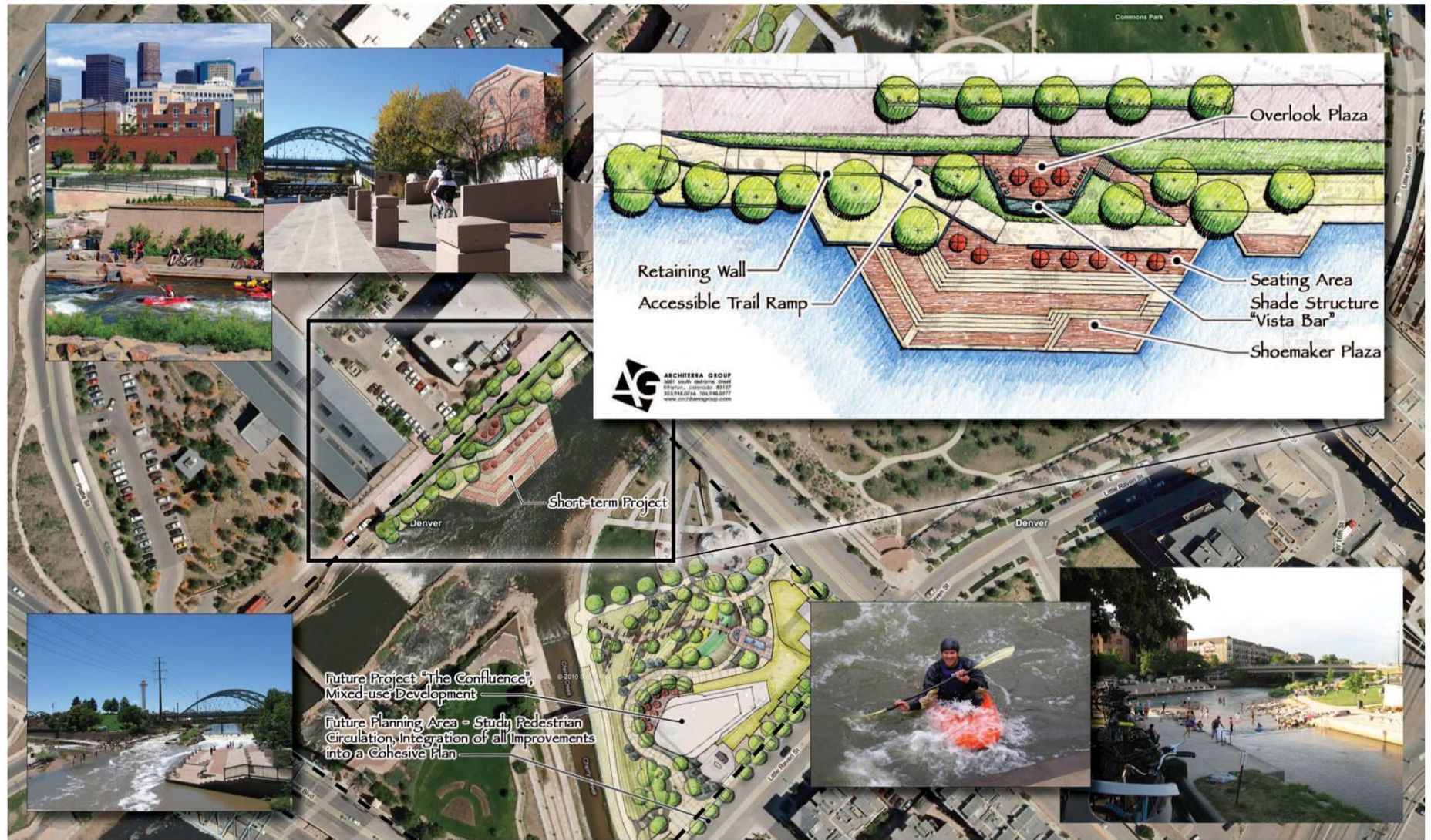
# Central Platte Valley Event District

- **Provide widened bike route and adjacent walk path wherever possible along the River**
  - **Undertake Confluence Park trail safety improvements**
  - **Undertake Confluence amphitheater trail/rest area improvements**
- **Commons Park**
  - **Westside Trail**
  - **Improve Westside Trail between 15th and 19th Streets**



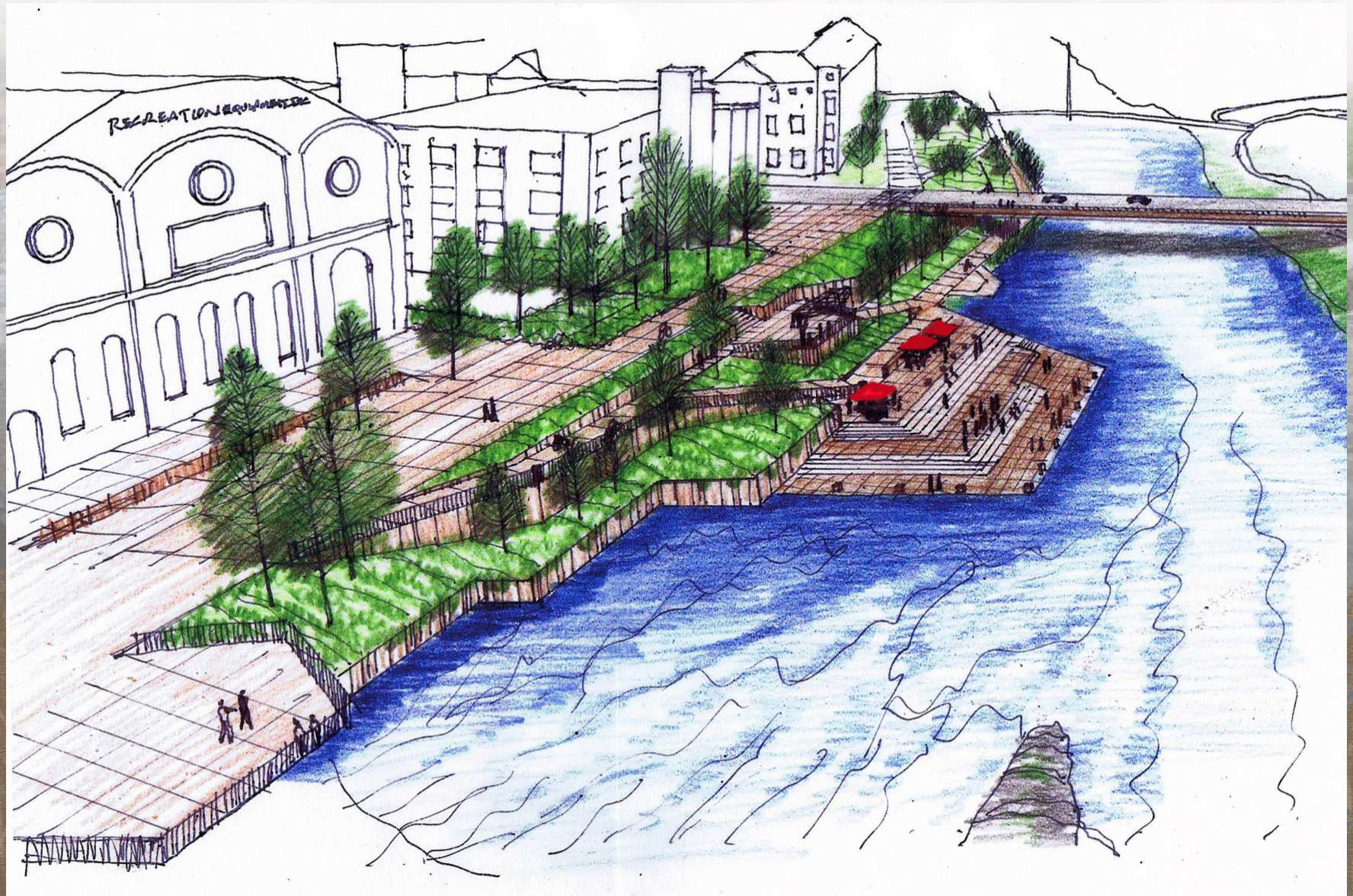


# Central Platte Valley Event District





# Central Platte Valley Event District





# Central Platte Valley Event District

## Estimated Costs

Confluence Park Ramp	\$1,089,113.00
South Platte River Trail	\$2,820,499.69
Subtotal	\$3,909,612.69
10% Contingency	\$390,961.27
<b>TOTAL</b>	<b>\$4,300,573.95</b>



# Northern Urban Greenway Corridor (River North Park/Trail/Bridge)

- **Provide widened bike route and adjacent path wherever possible along the River**
  - Increase access opportunities
  - Undertake work on riverbanks, including restoration, stabilization, etc.
- **Create riparian/wetlands/riverbank/water quality enhancements within project site**
- **W. 31st Avenue to W. 38th Avenue**
  - Signature Pedestrian Bridge between 34<sup>th</sup> and 35<sup>th</sup> Avenue (TAXI future development)
  - Create new park space on both sides of River within project site
  - Relocate Ringsby Court away from the River wherever possible (exact location to be determined)
  - Relocate Arkins Court
  - Proposed park within area between relocated Arkins Court and River Boardwalk along east side of River



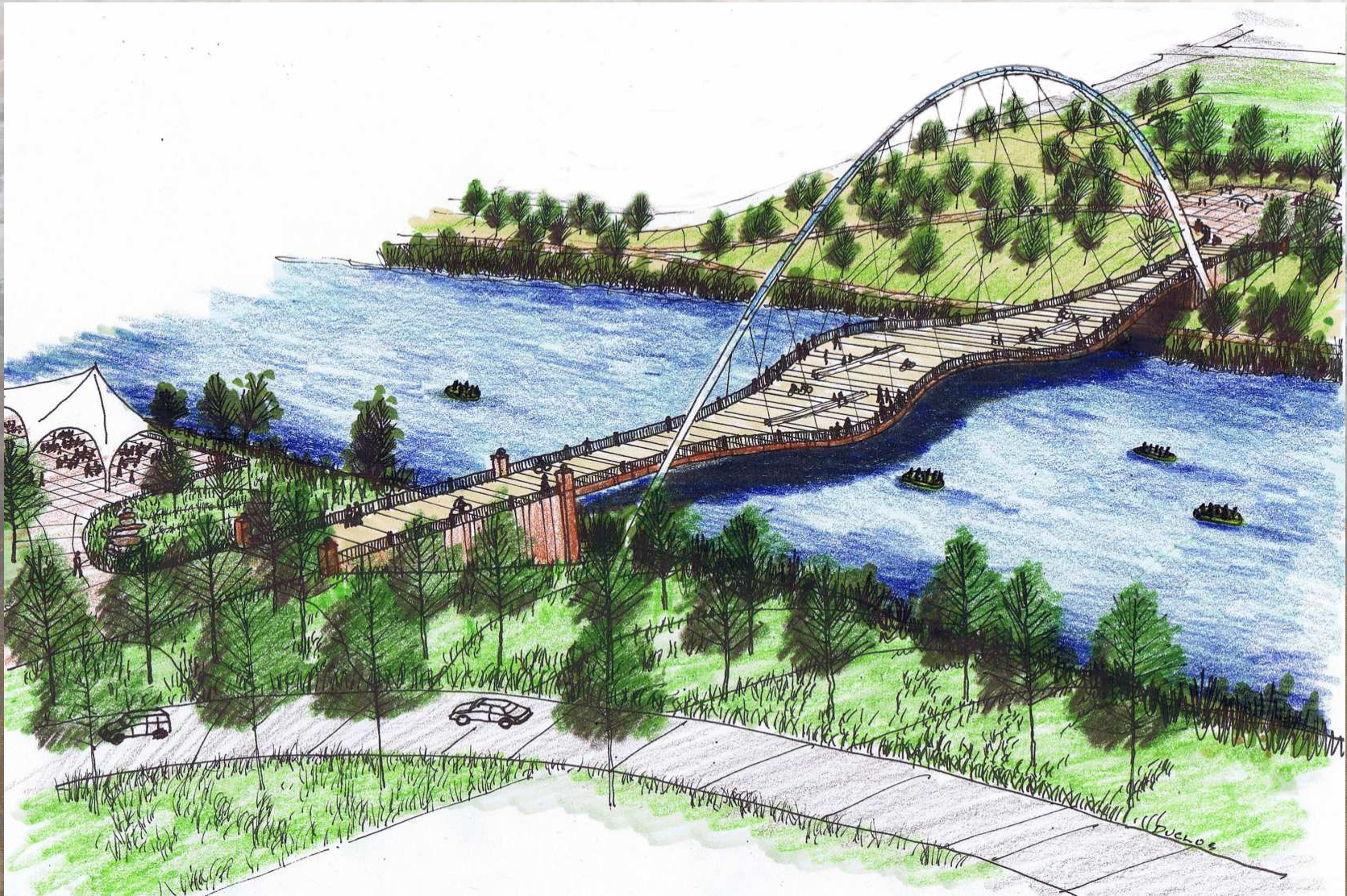
# Northern Urban Greenway Corridor (River North Park/Trail/Bridge)



Art Bridge Vision



# Northern Urban Greenway Corridor (River North Park/Trail/Bridge)





# Northern Urban Greenway Corridor (River North Park/Trail/Bridge)

## Estimated Costs

Road Realignment	\$1,374,333.00
Art Bridge	\$4,000,000.00
Art Bridge Park	\$2,452,756.40
South Platte River Trail	\$1,900,778.73
River Corridor Improvements	\$3,597,302.02
Subtotal	\$13,325,170.15
10% Contingency	\$ 1,332,517.05
<b>TOTAL</b>	<b>\$14,657,687.17</b>



# Mid-term Projects (Years 6-15)

## Overland Regional Park (Southern Platte Valley)

### •Grant Frontier Park

- Move Platte River Drive to the west
- Add screening fence between industrial area and the River where possible
- Remove South Platte River Drive between W. Wesley Avenue and W. Evans Avenue and expand Grant Frontier Park to the west
- Construct major gateway structure at W. Evans Avenue bridge

### •Pasquinel's Landing Park

- Create community garden
- Construct pedestrian bridge across Santa Fe Drive and connect to park with trail constructed to new 12' standard
- Install curb and gutter along Platte River Drive West, north of W. Evans Avenue/across from Pasquinel's Landing

### •Ruby Hill Park

- Install improvements to park as shown in adopted master plan
- Add new pedestrian bridge across River at W. Jewell Avenue
- Add drops with fish passage and remove diversion dam
- Construct major gateway structure at W. Florida Avenue bridge

### •Sanderson Gulch Confluence

- Install trail improvements, connection to River and improved boat access

### •Overland Pond Park

- Construct parkway improvements to W. Florida Ave. between Platte River Drive West and Santa Fe Drive



# Mid-term Projects (Years 6-15)

## Central Greenway Corridor

- **Construct parallel parking area for five cars along existing trail downstream of S. Huron Street**
- **Line River banks with canyon-like walls between Santa Fe Drive overpass and Phil Milstein Park**
- **Improve water quality/access to lake within Vanderbilt Park**
- **Construct major gateway structure at W. Mississippi Avenue and W. Alameda Avenue bridges**
- **Improve water quality, aquatic habitat and whitewater recreation opportunities in River channel**
- **Johnson-Habitat Park**
  - **Construct future Parks maintenance facility**
  - **Add improved boat put-in(s) at Johnson-Habitat Park**
- **Valverde Park**
  - **Formalize and narrow South Platte River Drive between W. Alameda Avenue and W. Bayaud Avenue**
  - **Improve water quality and aquatic habitat**
- **Denver Public Works Central Campus and Denver Wastewater building**
  - **Remove current trail between existing bridge and Fountain bridge adjacent to I-25 and construct new trail on west bank of River adjacent to the Central Campus site**
  - **Relocate existing bridge to north edge of Denver Wastewater building**



# Mid-term Projects (Years 6-15)

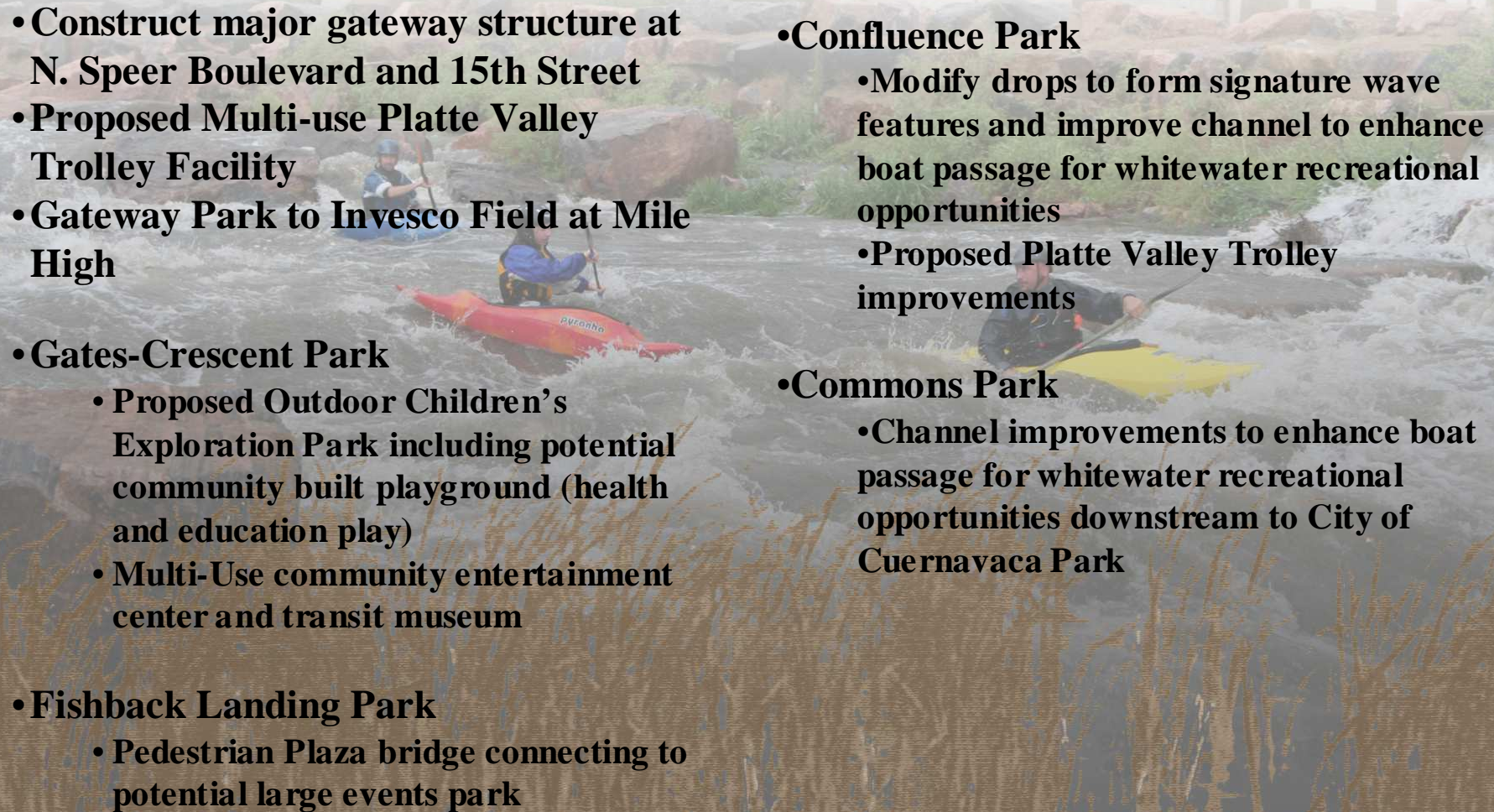
## Southern Urban Greenway Corridor

- **Create major gateway structures at W. 6th Avenue, W. 8th Avenue, W. 13th Avenue and W. Colfax Avenue**
- **Phil Milstein Park**
  - **Redesign drop structure upstream towards Canyons to enhance boat passage and provide whitewater recreational opportunities**
  - **Improve water quality and aquatic habitat**
- **Frog Hollow Park**
  - **Enhance upland habitat**
  - **Improve River access**
  - **Install native vegetation**
  - **Create emergent bench**
- **Weir Gulch Marina Park**
  - **Improve River edge access and boat put-in**
  - **Proposed Sun Valley Riverfront Park**
  - **Close 11th Avenue east of Alcott Way**
  - **Create community gardens north of W. 11th Avenue**
  - **Add architectural improvement to neighborhood gateway**



# Mid-term Projects (Years 6-15)

## Central Platte Valley Event District

- **Construct major gateway structure at N. Speer Boulevard and 15th Street**
  - **Proposed Multi-use Platte Valley Trolley Facility**
  - **Gateway Park to Invesco Field at Mile High**
  - **Gates-Crescent Park**
    - **Proposed Outdoor Children's Exploration Park including potential community built playground (health and education play)**
    - **Multi-Use community entertainment center and transit museum**
  - **Fishback Landing Park**
    - **Pedestrian Plaza bridge connecting to potential large events park**
  - **Confluence Park**
    - **Modify drops to form signature wave features and improve channel to enhance boat passage for whitewater recreational opportunities**
    - **Proposed Platte Valley Trolley improvements**
  - **Commons Park**
    - **Channel improvements to enhance boat passage for whitewater recreational opportunities downstream to City of Cuernavaca Park**
- 



# Mid-term Projects (Years 6-15)

## Northern Urban Greenway Corridor

- **City of Cuernavaca Park to Park Avenue**
  - Stormwater wetland filtration basin
  - Backwater wetland
  - Proposed underpass improvements
- **Park Avenue to 31st Street**
  - Stormwater wetland filtration basin
  - Overlook
  - Backwater wetland
  - Retaining wall
  - Scored pavement at 31st Street to indicate River gateway from Brighton Boulevard to the River
  - 50-foot riparian buffer conservation easement
- **31st Avenue to W. 38th Avenue**
  - River Plaza
  - Stormwater wetland filtration basin
  - Overlook
  - Backwater wetland



# Mid-term Projects (Years 6-15)

## Northern River Event District

- Provide widened bike route and adjacent walk path wherever possible along the River
- Globeville Landing Park
  - Riverfront Plaza
  - Community-built playground

## Northern Platte Valley Regional Park

- Provide widened bike route and adjacent walk path wherever possible along the River
- Northside Park
  - Enhanced plaza
  - Soccer fields
  - Community picnic areas
- Heron Pond Natural Area
  - Proposed parking area
  - Boardwalk
  - Wetlands



# Long Term Projects (Years 16+)

## ◊ Overland Regional Park (Southern Platte Valley)

- **Overland Golf Course**
- **Plan future regional park and renovated nine-hole, Audubon-certified golf course**

## ◊ Central Platte Valley Event District

- **Potential large events park on current site of Elitch Gardens Theme Park**  
*(to be undertaken if and when this site is redeveloped)*
- **Potential mixed-use entertainment redevelopment including whitewater course & new pools**

## ◊ Northern River Event District

- **Water quality feature**
- **Amphitheater**
- **Parking structure**

## ◊ Northern Platte Valley Regional Park

*(currently home to National Western complex to be undertaken if and when this site is redeveloped)*

- **Proposed pedestrian trail connection under I-70 between Globeville Landing Park and proposed regional park**
- **Emergent bench with wetlands**
- **Potential mixed-use development**
- **Open water feature**
- **Community gathering area**