

North Denver Cornerstone Collaborative

Six Projects – One Vision



LAND USE, TRANSPORTATION & INFRASTRUCTURE
COMMITTEE (LUTI)
OCTOBER 17, 2017

AGENDA

- Globeville, Elyria, Swansea (GES)
 - Community Investment Fund

- Central 70 Reconstruction
 - Mitigation Efforts

- North Denver Stormwater Systems





GLOBEVILLE & ELYRIA-SWANSEA (GES)

Build on the vision established in the neighborhood plans to advance transformative projects and address the immediate needs of the community.



COMMUNITY INVESTMENT FUND

NDCC

1. Facilitate GES discussion about the Community Investment Fund (CIF); including governance, structure and priorities for use
2. Assessment of community use of Coliseum
3. Discuss possible early activation of a “round-up” at the Coliseum and existing National Western Stock Show structures

NWC AUTHORITY

The Framework Agreement signed on September 28, 2017 details the following:

The foundation may act as a fiscal agency for, and perform fundraising, endowment, or other functions related or unrelated to, such community investment fund on behalf of the Authority





CENTRAL 70 RECONSTRUCTION

Work in close collaboration with CDOT throughout this project to reconnect the surrounding communities with new amenities and infrastructure.



CENTRAL 70 MITIGATION EFFORTS – SCOPE

- **Goal:** Protect homes within 500 ft. from construction from noise and dust
- **Mitigation boundary:** Between Colorado & Brighton boulevards, between 45th & 46th avenues
- **Number of homes:** 268 homes within the mitigation boundary
- **CDOT's offerings:** free of charge to all 268 homes
- **Denver's offerings:** free of charge to all 268 homes
- **Contractors:**
 - CDOT contracting CREA Results – grassroots community engagement
 - CCD contracting Energy Outreach Colorado (EOC) – home improvements implementation



CENTRAL 70 MITIGATION EFFORTS – SCOPE



CCD

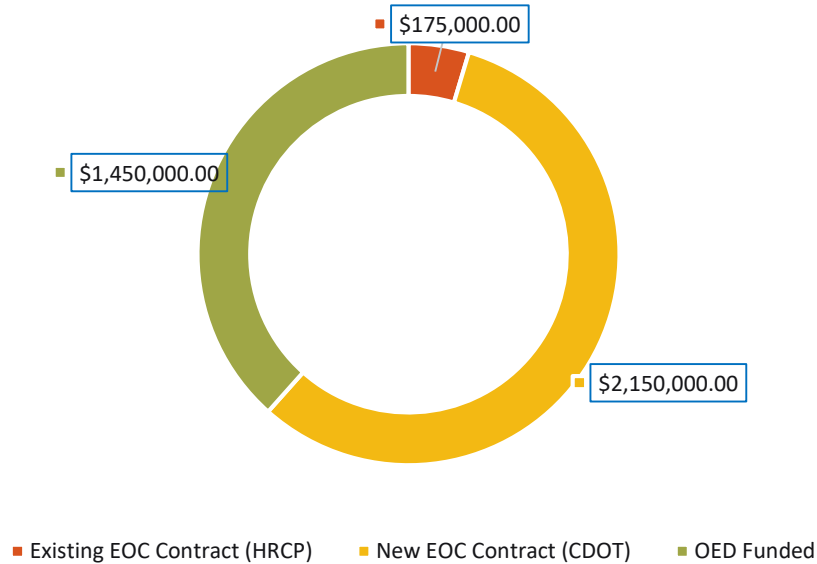
- MERV Filters
- Positive pressure air ventilation
- HVAC with Filtration
- Window and Door Replacement

CDOT

- \$25/month Xcel Energy Credit
- Two portable/window-mounted AC Units
- Furnace Filter
- Interior Storm Windows
- Programmable Thermostat
- Attic Insulation
- Caulking
- Carbon Monoxide & Smoke Detectors
- Weather Stripping



CENTRAL 70 MITIGATION EFFORTS – BUDGET



Existing EOC Contract

- Assessment and construction of 10 demonstration homes
- Up to 20 additional assessments within mitigation boundary

New EOC Contract

- Assessment and construction of all 268 homes within mitigation boundary
- EOC will manage the program and engage subcontractors



CENTRAL 70 MITIGATION EFFORTS – SCHEDULE



SEPTEMBER
2017

94 non-resident homeowner letters and 268 postcards to all residents mailed

CREA begins door to door outreach in boundary

15 home assessments completed (including 10 demonstration homes)



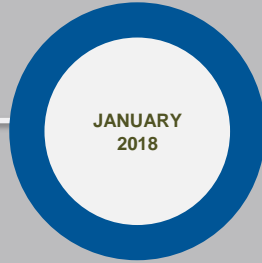
OCTOBER
2017

Receive replies from 70 non-resident homeowners and 90 resident owners

35 additional assessments scheduled as of 10/12

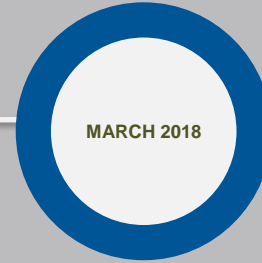
EOC and subcontractors to begin conducting 3 assessments/day

Construction on 10 demonstration homes anticipated to start end of month



JANUARY
2018

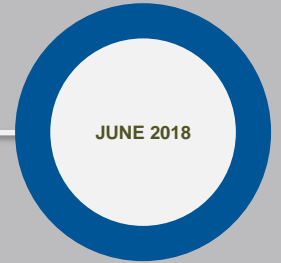
All home assessments to be completed by January 1, 2018



MARCH 2018

Construction on homes will be on a rolling basis for CDOT mitigations. Denver will prioritize offerings if necessary.

At least 50% of the construction for the CDOT mitigation measures must be completed no later than March 1, 2018.



JUNE 2018

Construction on homes within the mitigation boundary for the CDOT mitigation measures must be completed by June 1, 2018.



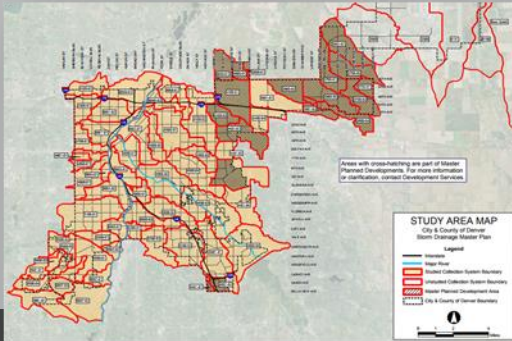
NORTH DENVER STORMWATER SYSTEMS



CITY-WIDE EFFORTS ON STORMWATER MANAGEMENT

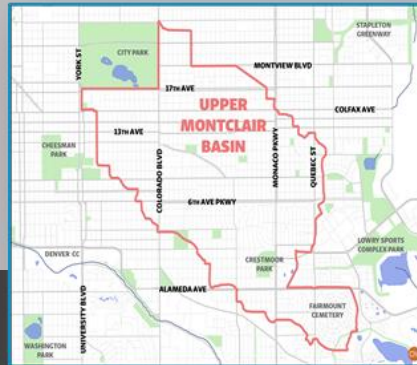
CITY STORM DRAINAGE MASTER PLAN

- Developed in 2014
- Updated every 5 years in order to identify and alleviate present and future drainage problems in the city
- Includes various geographically-focused studies, such as Montclair Basin and Globeville/Utah basin



UPPER MONTCLAIR BASIN

- Congress Park
- South City Park
- Southern part of Park Hill
- Hale
- Montclair
- Mayfair
- Hilltop
- Crestmoor
- Fairmount Cemetery
- Small portions of Washington, Virginia Vale and Lowry (west of Quebec).

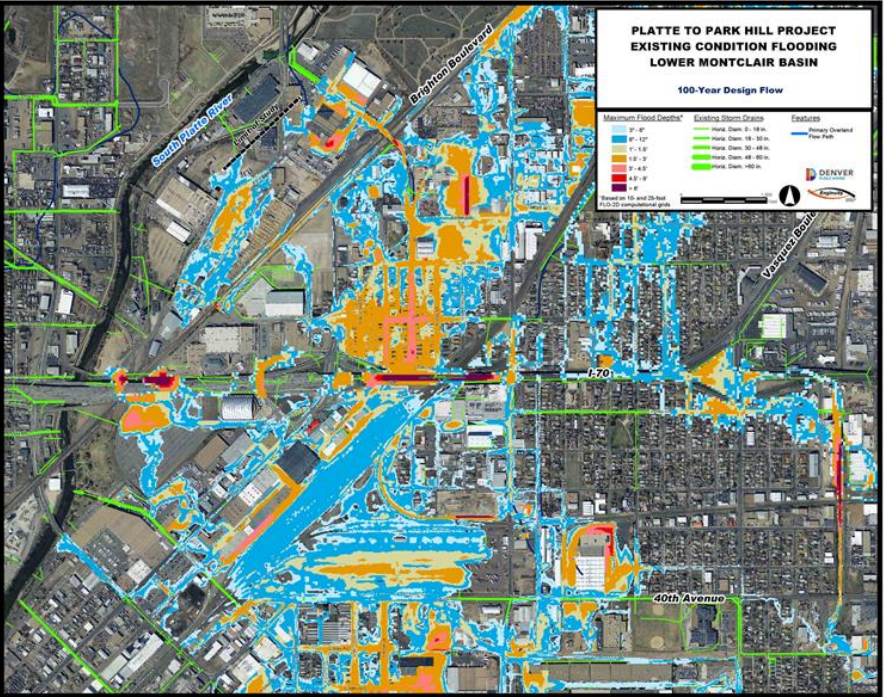


PLATTE TO PARK HILL

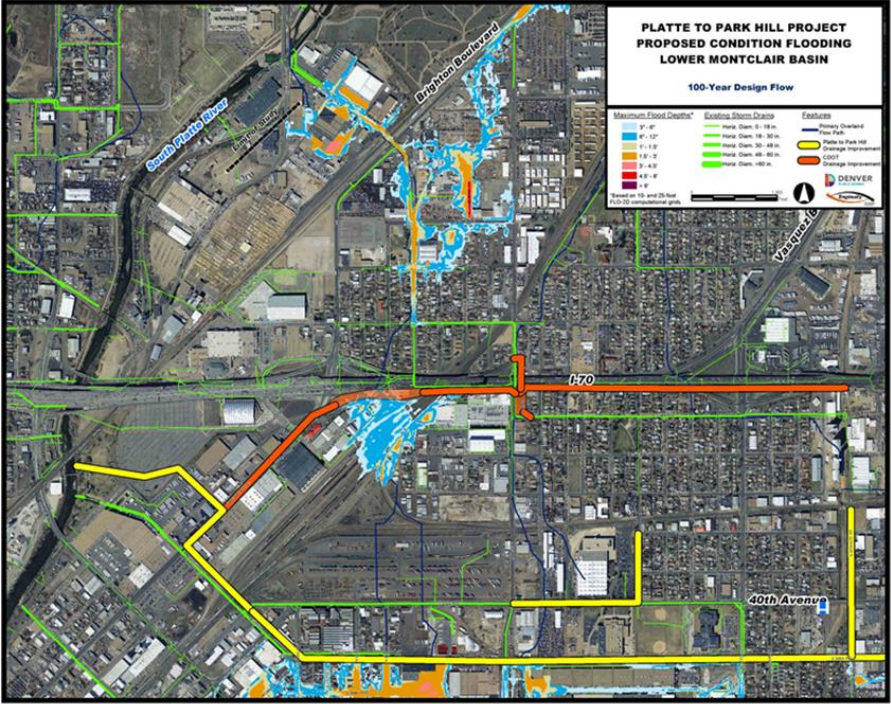
- Park Hill Detention
- City Park Golf Course
- 39th Avenue Greenway & Open Channel
- Globeville Landing Outfall



PLATTE TO PARK HILL PROGRAM



EXISTING CONDITIONS SHOWING 100-YEAR FLOWS



PLATTE TO PARK HILL PROPOSED CONDITONS

PLATTE TO PARK HILL PROGRAM

Neighborhoods

- Elyria
- Swansea
- Globeville
- Cole
- Clayton
- Skyland
- Whittier
- Five Points
- Northwest Park Hill

Communications & Community Engagement Challenges

- Four stormwater projects within program
- Extensive geographic area
- Various city agencies
- Several contractors & subcontractors
- Dissimilar communities
- Two prevalent languages

Program to address

- Increase neighborhood connectivity
- Improve water quality
- Add new park/rec space
- Provide critical flood protection

NDCC Role

- Set and direct overarching message
- Coordinate communications and outreach efforts across agencies and contractors
- Coordinate and leverage knowledge of other agency projects and programs

THANK YOU

QUESTIONS?

