

# Denver Parks & Recreation

Proposed Park Designations  
15<sup>th</sup> Round – Spring 2024

# Park System History

- Park System had its origin in 1858 with the cities of Auraria, Denver City and Highland at the confluence of the South Platte River and Cherry Creek
- First park was Curtis Park in 1868
- First Park Board was created in 1893
- The Park Board directed the management and development of the park system until about 1904
- Under Mayor Speer, a charter amendment in 1904 was adopted that created the Department of “Improvements and Parks”
- In 1910 the Mountain Park System was established
- In 1956 the Department of Parks and Recreation was created.
- Parcels that were acquired, developed or treated as a park at this time (1956) became designated under this charter amendment
- Subsequent park designations are accomplished through the City Council ordinance process

# Designation Considerations

- Supports a master plan (City Park)
- Has historical, cultural, ecological, or educational significance (Civic Center, Cheesman)
- Preservation of key visual corridors or scenic vistas (Cranmer)
- Park facilities have been or are planned to be constructed
- Area infrastructure / utilities are not in a state of flux that may impact or change the park (Hampden Heights Park)
- There are no title / ownership issues that cast a cloud on the City's title or right to possession of the park (Kennedy Complex, DEN Open Space)
- No pending or anticipated plans for making/expanding non-park uses within the park.

# Park Designation Status

- **Beginning of 2013**  
Approximately 68% of the urban park system was already designated a parkland
- **1<sup>st</sup> Round - April 2013**  
Approximately 180 acres became designated (72% of urban parks are designated)
- **2<sup>nd</sup> Round – January 2014**  
Approximately 275 acres became designated (78% of urban parks are designated)
- **3<sup>rd</sup> Round – April 2014**  
Approximately 164 acres became designated (82% of urban parks are designated)
- **4<sup>th</sup> and 5<sup>th</sup> Rounds – November 2014**  
Approximately 42 acres became designated (84% of urban parks are designated)

# Park Designation Status

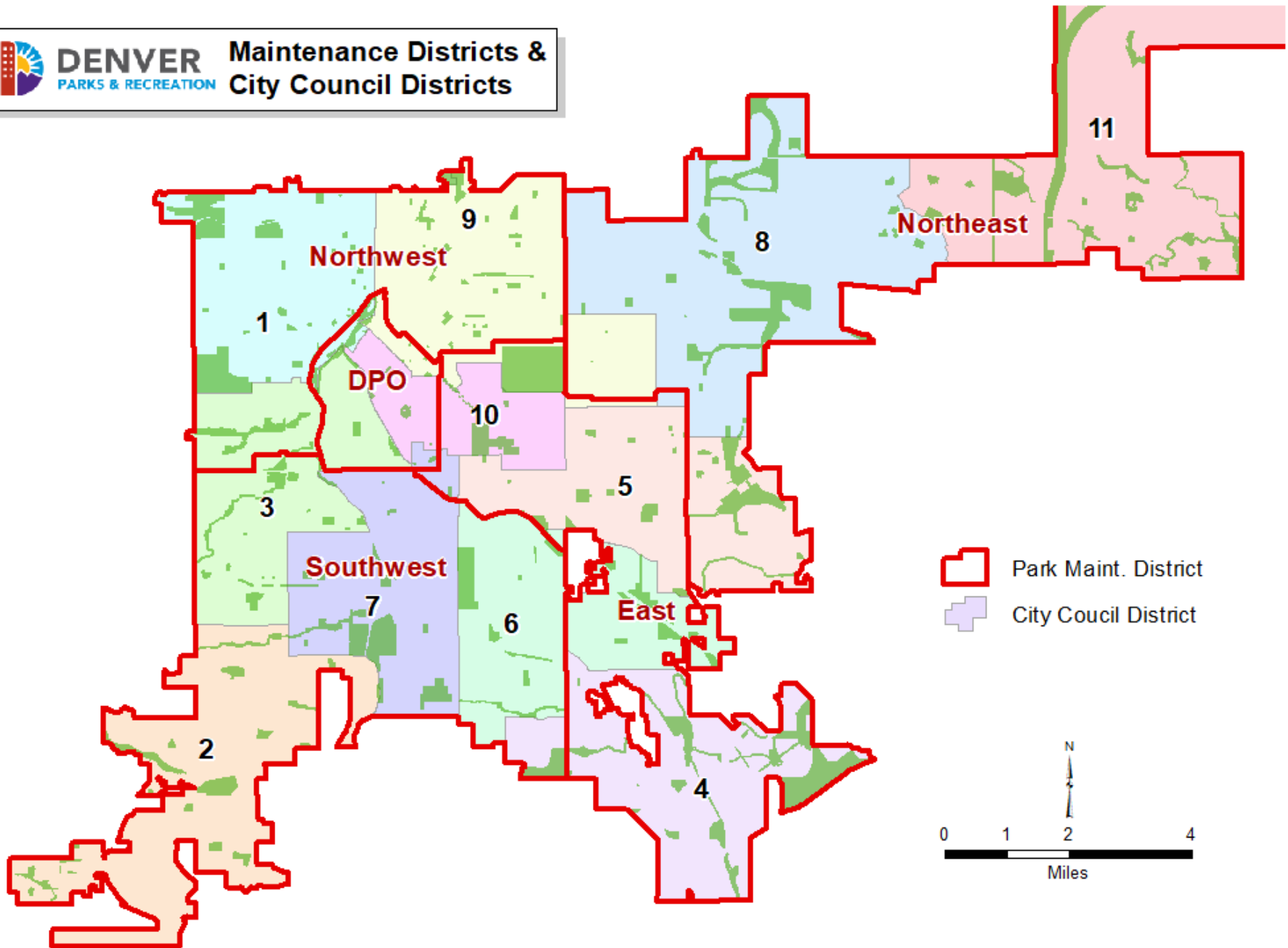
- 6<sup>th</sup> Round – Fall 2015  
Approximately 88 acres became designated (85% of urban parks are designated)
- 7<sup>th</sup> Round – Spring 2016  
Approximately 5.9 acres became designated (78% of urban parks are designated)
- Red Rocks Park Addition – Summer 2016  
Approximately 98 acres added to Red Rocks became designated
- 8<sup>th</sup> Round – Fall 2016  
Approximately 180 acres became designated (81% of urban parks are designated)
- 9<sup>th</sup> Round – Spring 2017  
Approximately 65 acres became designated (82% of urban parks are designated)

# Park Designation Status

- **10<sup>th</sup> Round – Fall 2017**  
Approximately 3.6 acres became designated (82% of urban parks are designated)
- **11<sup>th</sup> Round – Winter 2018**  
Approximately 75 acres became designated (84% of urban parks are designated)
- **12<sup>th</sup> Round – Fall 2020**  
Approximately 99 acres became designated (82% of urban parks are designated)
- **13<sup>th</sup> Round – Spring 2022**  
Approximately 36 acres became designated parkland (81% of urban parks are designated)
- **14<sup>th</sup> Round – Spring 2023**  
Approximately 121.8 acres became designated (76% of urban parks designated)
- **15<sup>th</sup> Round – Spring 2023**  
Approximately 450 acres of mountain parks and 130 acres of urban parks will become designated.  
(78% of urban parks designated)



# DENVER Maintenance Districts & City Council Districts





Gilpin County

Clear Creek  
County

Jefferson County

Genesee

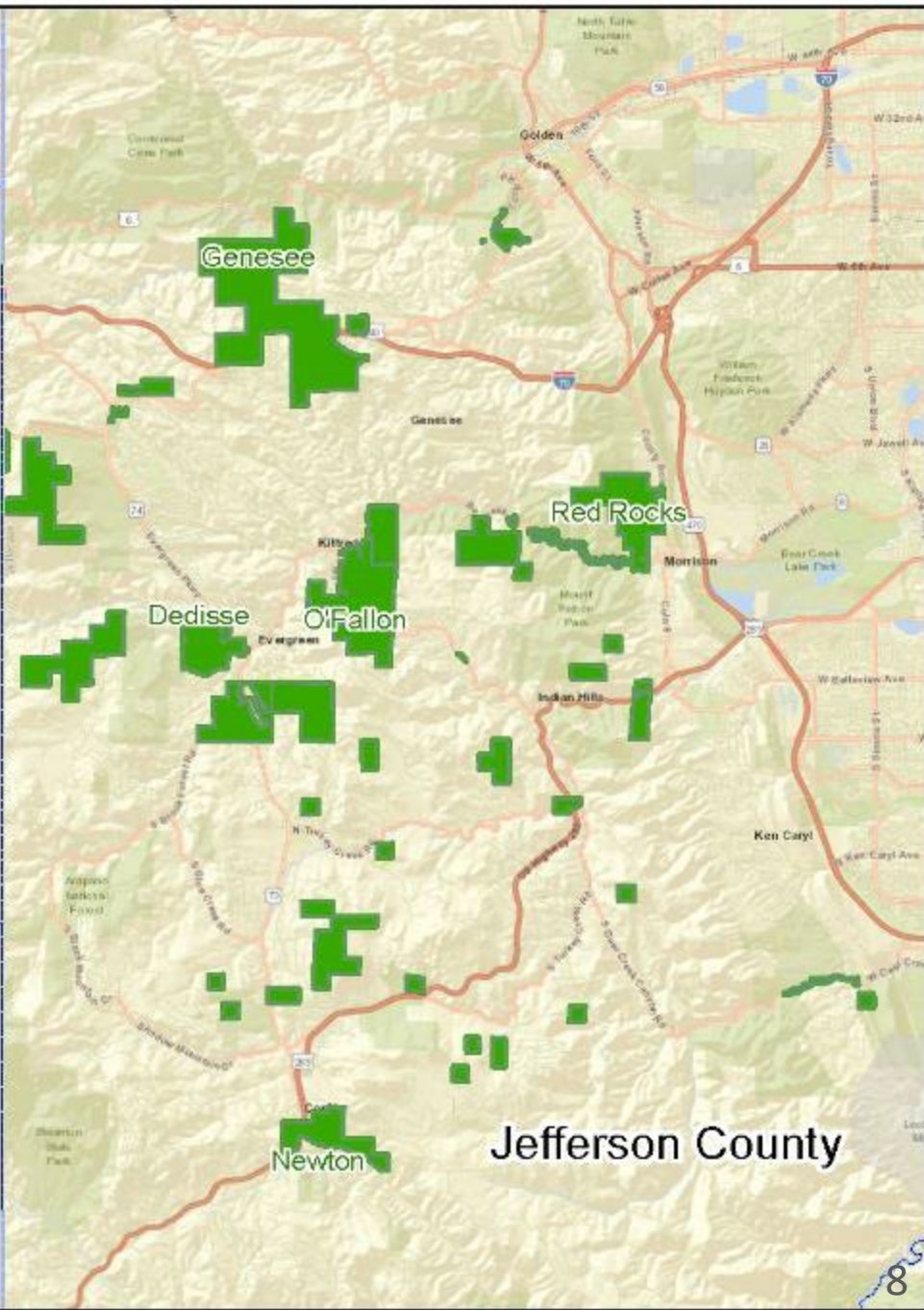
Red Rocks

Dedisse O'Fallon

Newton

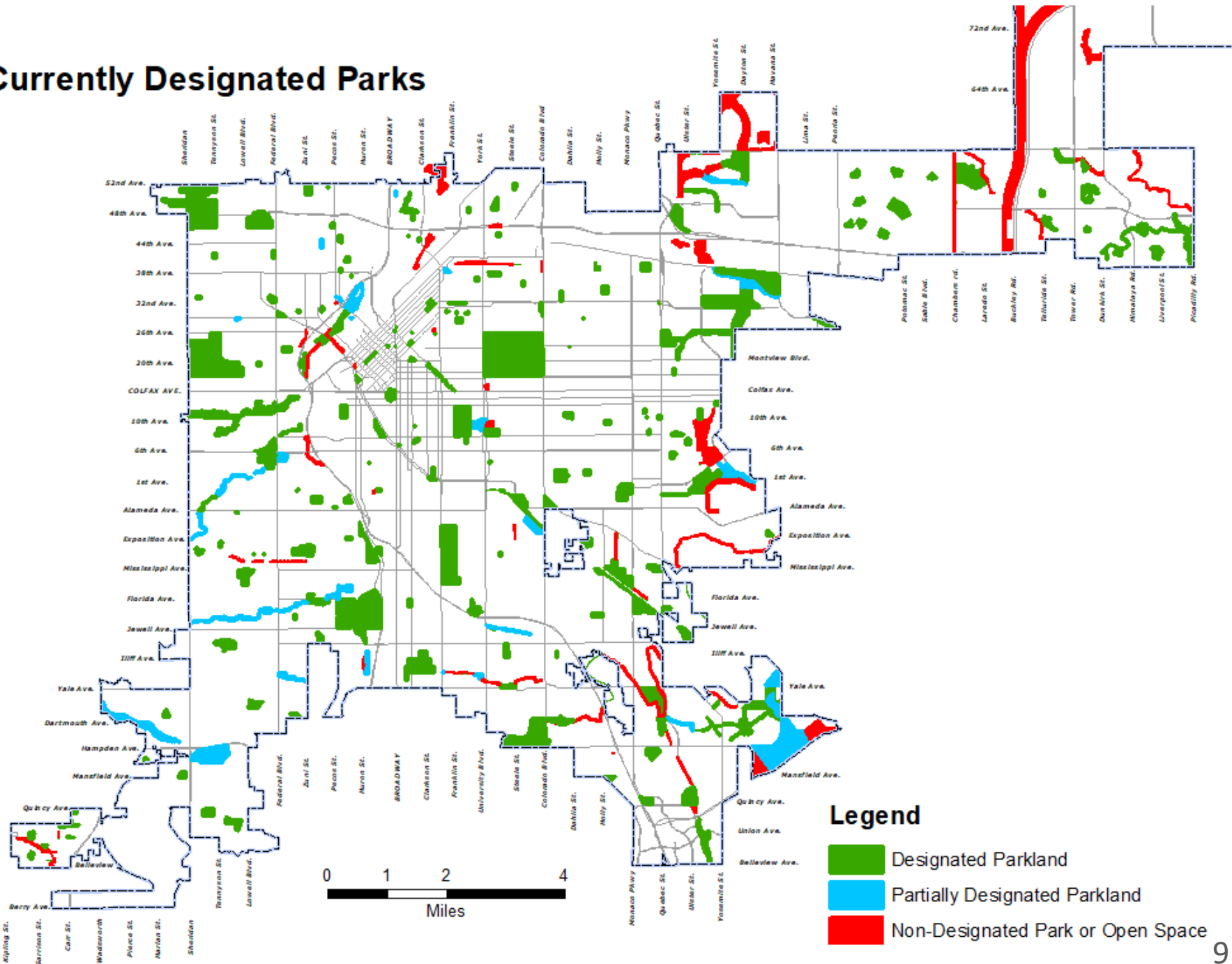
Echo Lake

Summit  
Lake





# Currently Designated Parks



## Legend

- Designated Parkland
- Partially Designated Parkland
- Non-Designated Park or Open Space

# Park Designations

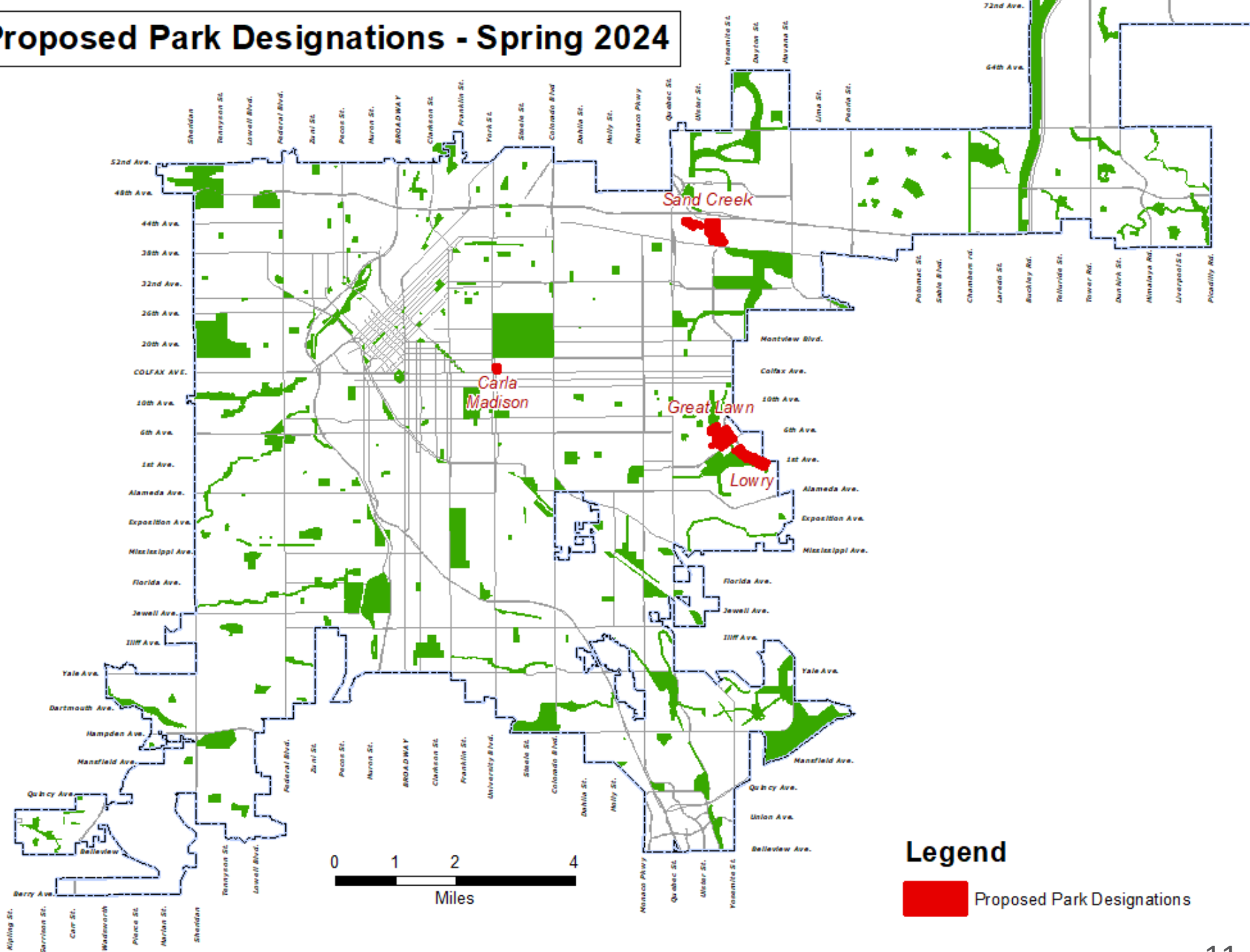
## Proposed Designations - Round 15 - Spring 2024

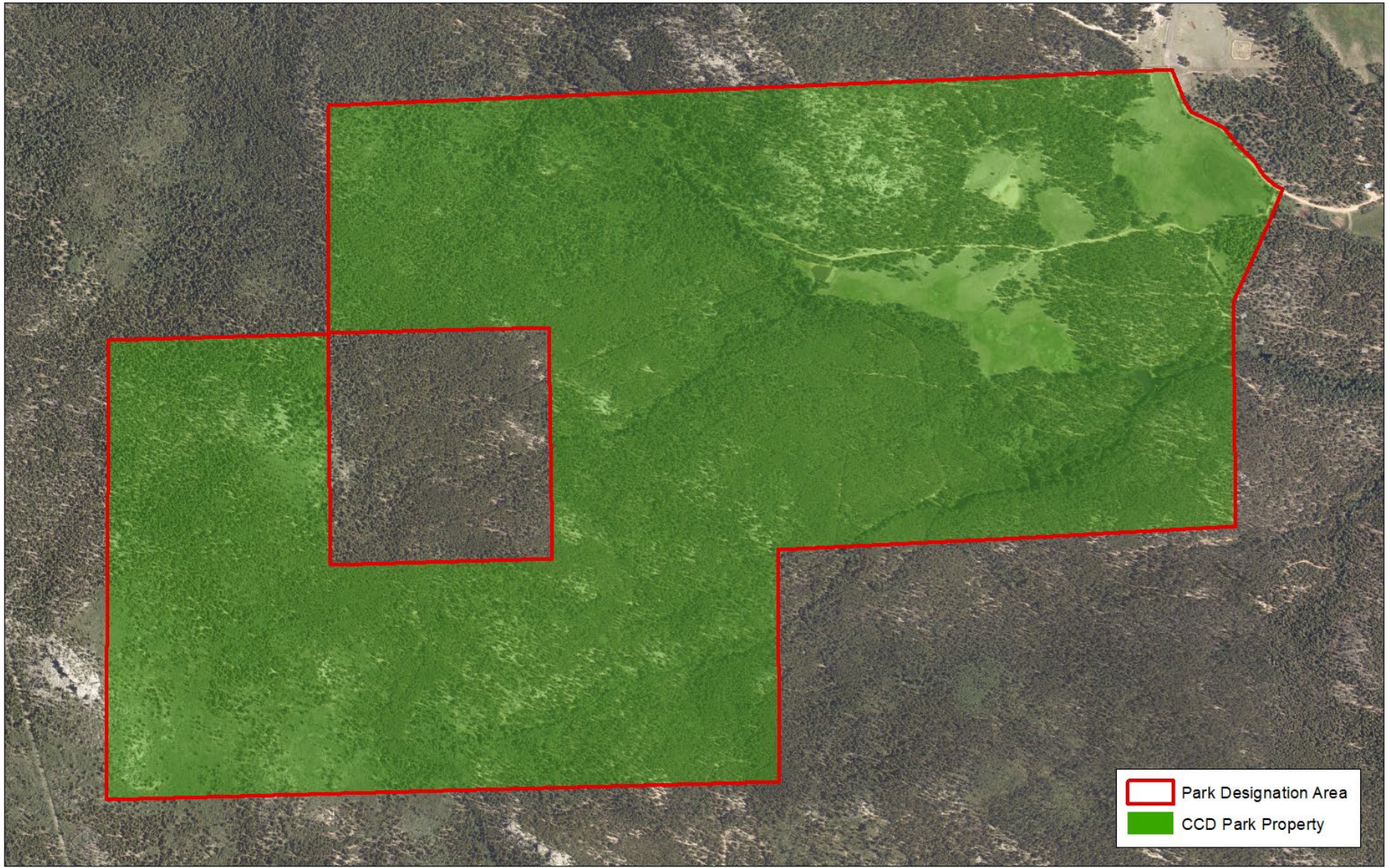
LOCATION NAME	PARK TYPE	GIS ACRES	MAINT DIST	COUNCIL DIST
Axton Ranch	Mountain	450.0	DMP	N/A
Carla Madison Recreation Center	Rec Center	2.9	East	10
Sand Creek (former bulk fuel farm)	Open Space	23.4	NE	8
Sand Creek (former swift property)	Open Space	9.5	NE	8
Sand Creek (trunk open space 04D)	Open Space	11.1	NE	8
Great Lawn Park	Community	50.1	NE	5
Lowry Open Space	Open Space	32.8	NE	5

<b>Total Acres:</b>	<b>579.8</b>
---------------------	--------------

- Designation of parkland from 1956 to 2012 – 56 year time span: approximately 600 acres
- Designation of parkland from 2013 to 2023 – 10 year time span: approximately 1,433.3 acres, more than twice as much as the prior 56 years
- Park and Open Space acreage added to the Denver Parks system from 2013 to 2023: approximately 1,907 acres
- Designated parkland cannot be sold or disposed of without approval of voters

# Proposed Park Designations - Spring 2024

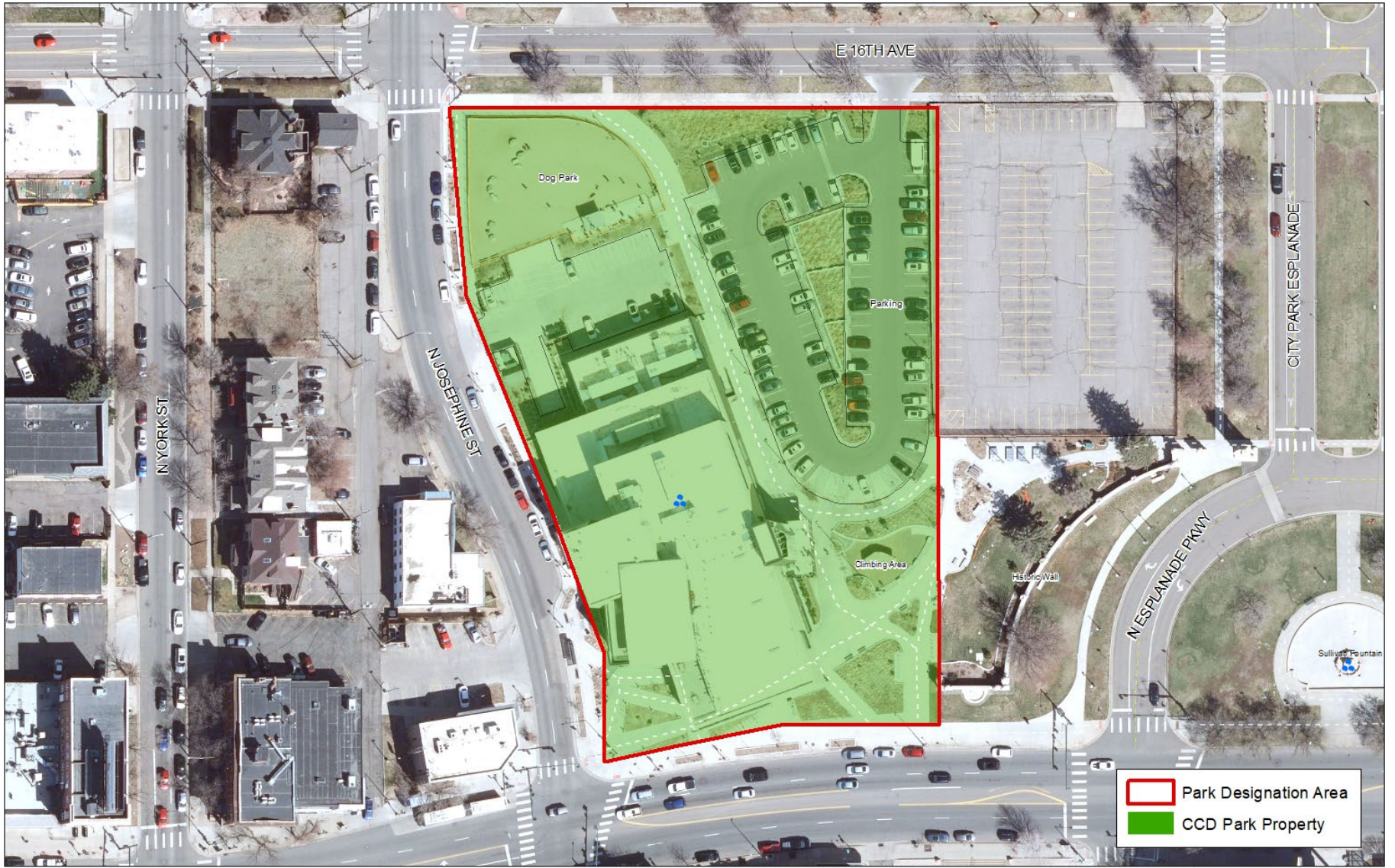




**Axton Ranch**  
Aerial Imagery - 2022

1 inch = 500 feet at 11x17  
100  
Map Scale In Feet





**Carla Madison Recreation Center**

Aerial Imagery - 2022

1 inch = 60 feet at 11x17

100  
Map Scale In Feet





**Great Lawn Park**  
 Aerial Imagery - 2022

1 inch = 223 feet at 11x17  
 100  
 Map Scale In Feet





**Lowry Open Space**  
Aerial Imagery - 2022

1 inch = 300 feet at 11x17  
100  
Map Scale In Feet





**Sand Creek Open Space Parcels**

Aerial Imagery - 2022

1 inch = 300 feet at 11x17  
 100  
 Map Scale In Feet





# Questions / Comments

