

Globeville Levee Update

South Platte River Committee
September 10, 2025

Purpose

- Improvements to the Globeville Levee: How did we get here?
- Status of Improvements
- Adjacent Supporting Work

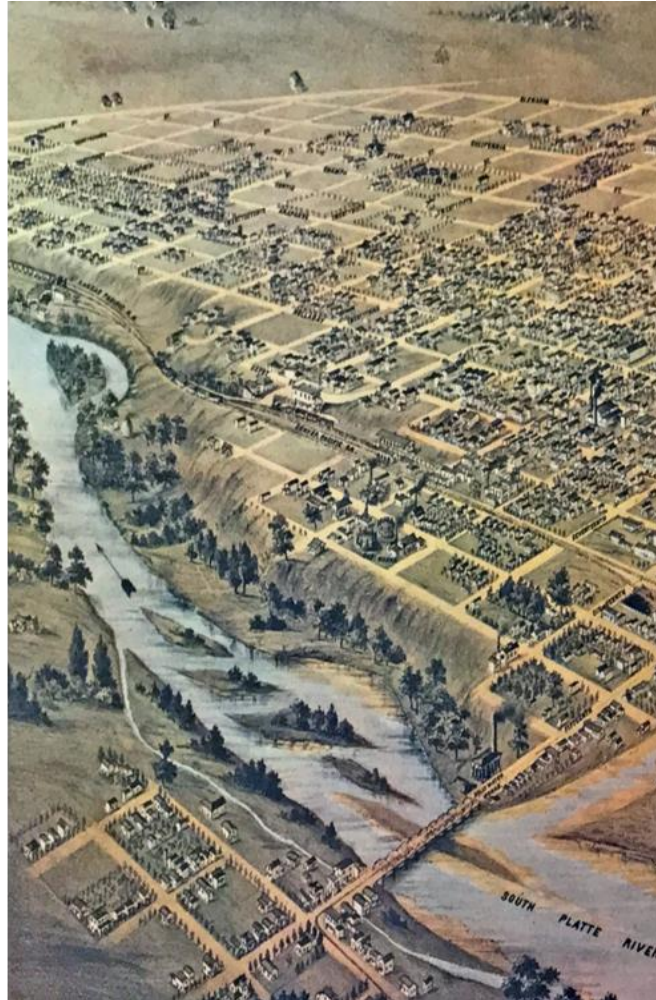
South Platte River

As long as 600 years ago, the Ute, Cheyenne, and Arapahoe Peoples and other tribal nations gathered at the confluence of the South Platte River and Cherry Creek, trading and hunting along its banks, in stewardship of the river.

The low-lying lands along the river were agricultural in nature and subject to changing characteristics and floods.



Late 1800's –Early 1900's

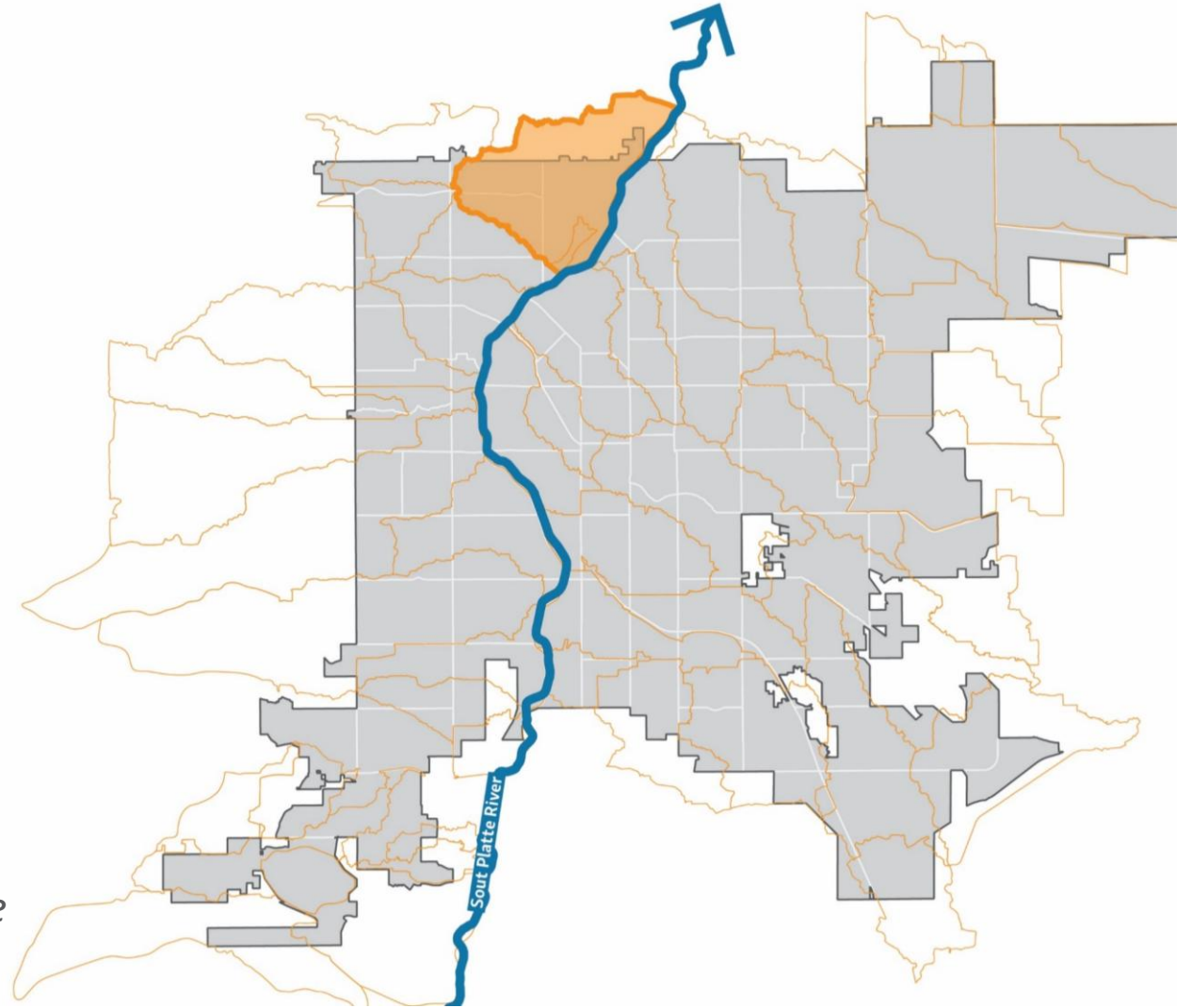


River Today

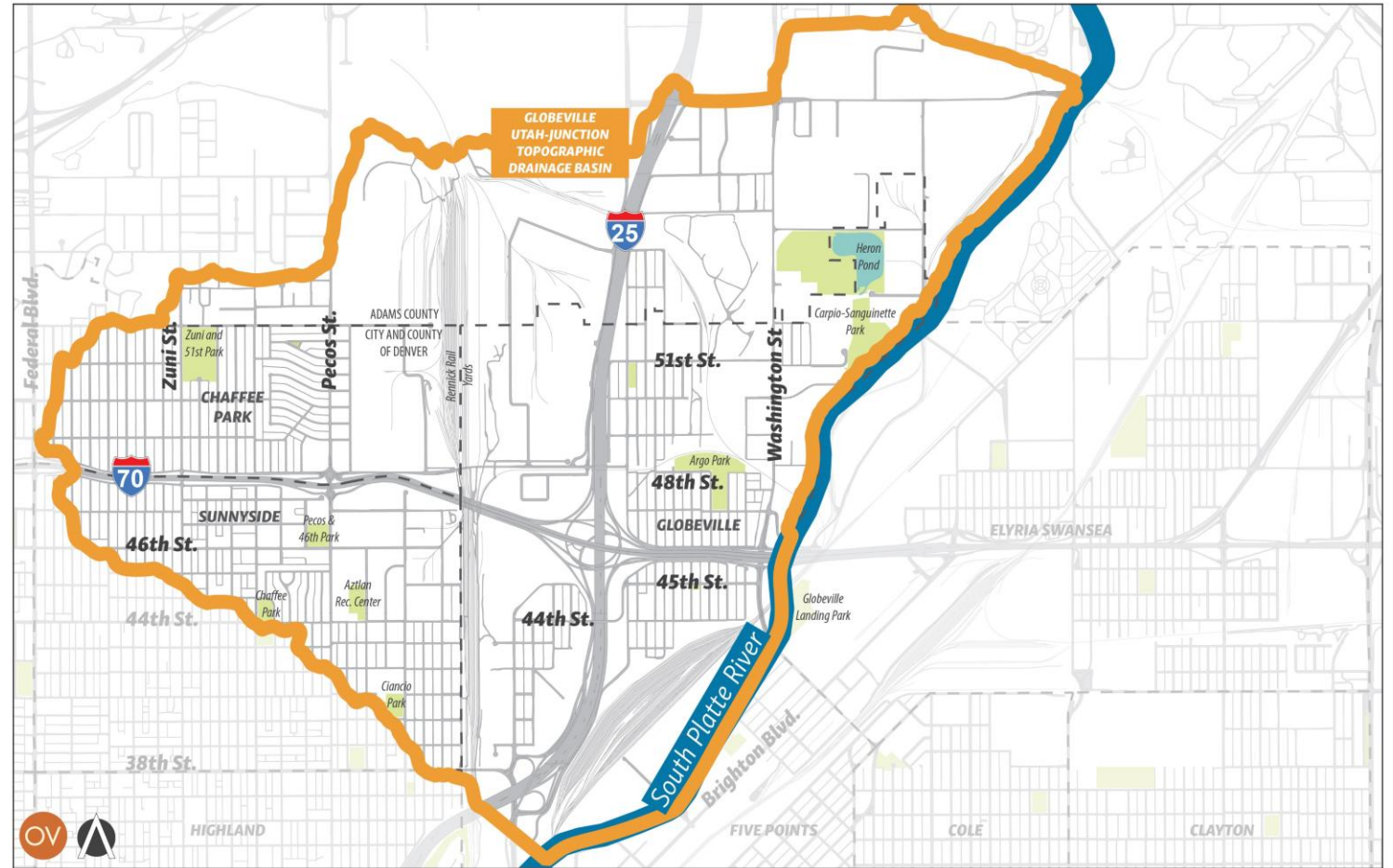


Globeville Utah-Junction Drainage Basin

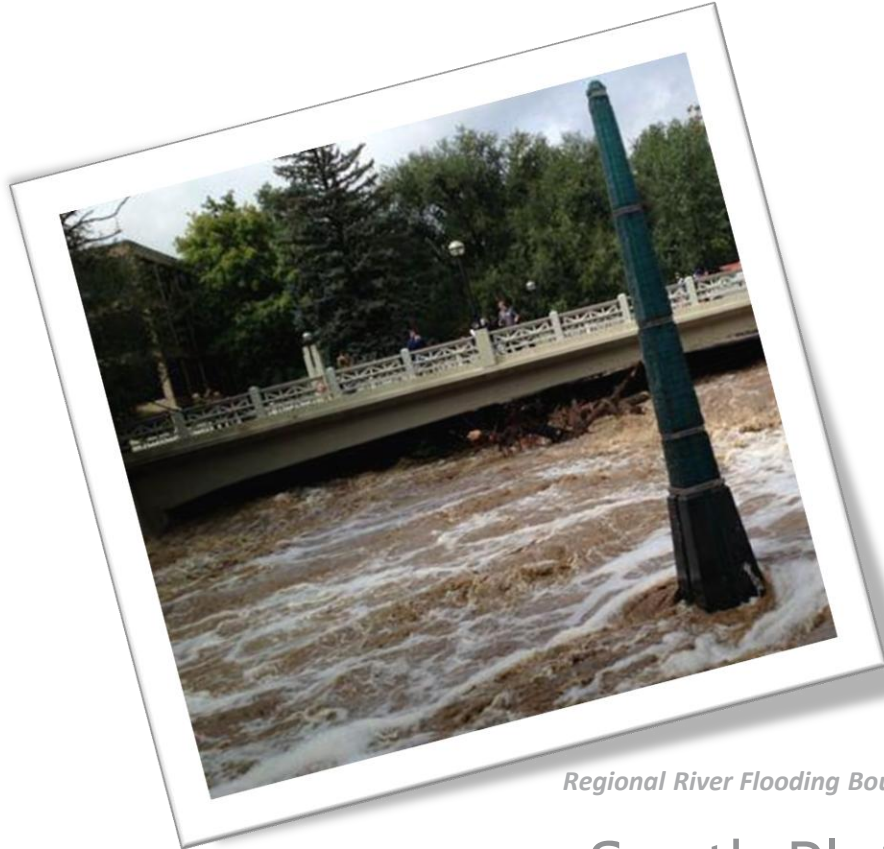
*One of only three drainage
basins with no natural drainage
way.*



Globeville-Utah Junction Basin



Flood Risk in the Basin



Regional River Flooding Boulder 09/2013

South Platte River

(Regional Fluvial Flooding)



Local Flooding Denver 06/2015

Stormwater Flooding

(Localized Pluvial Flooding)

Historic Measures to Manage Flood Risk

1920s – Flood Control

The Taming of the Treacherous Platte

No More Floods for Globeville

Platte River Protection and a New Bridge

One of the parts of Denver most often subjected to the river's freaks is Globeville. A contract has been let to change the course of the Platte at Globeville and this spring a new bridge will go in at Globeville at a cost of approximately \$80,000.

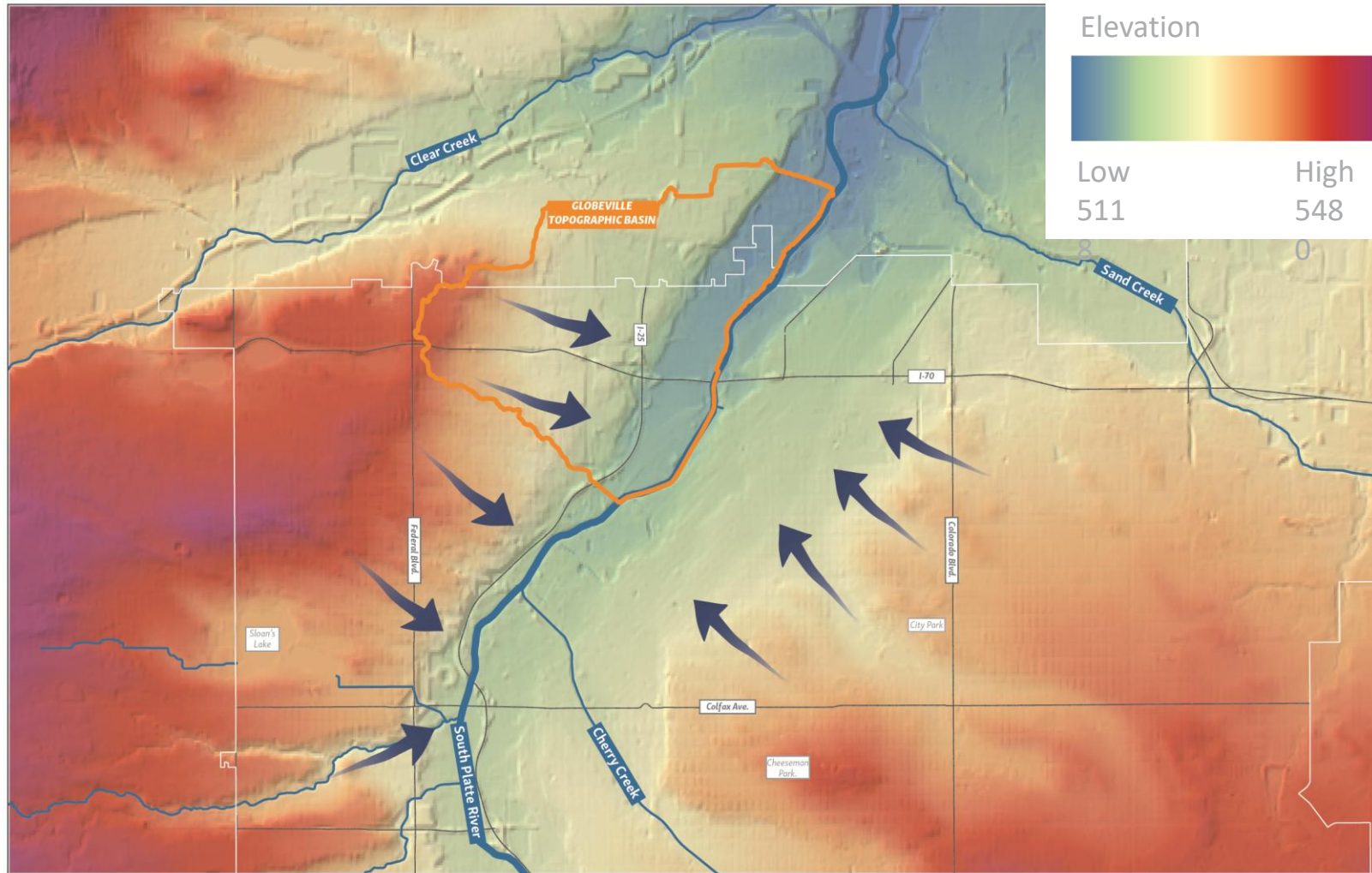
1965 – Floods



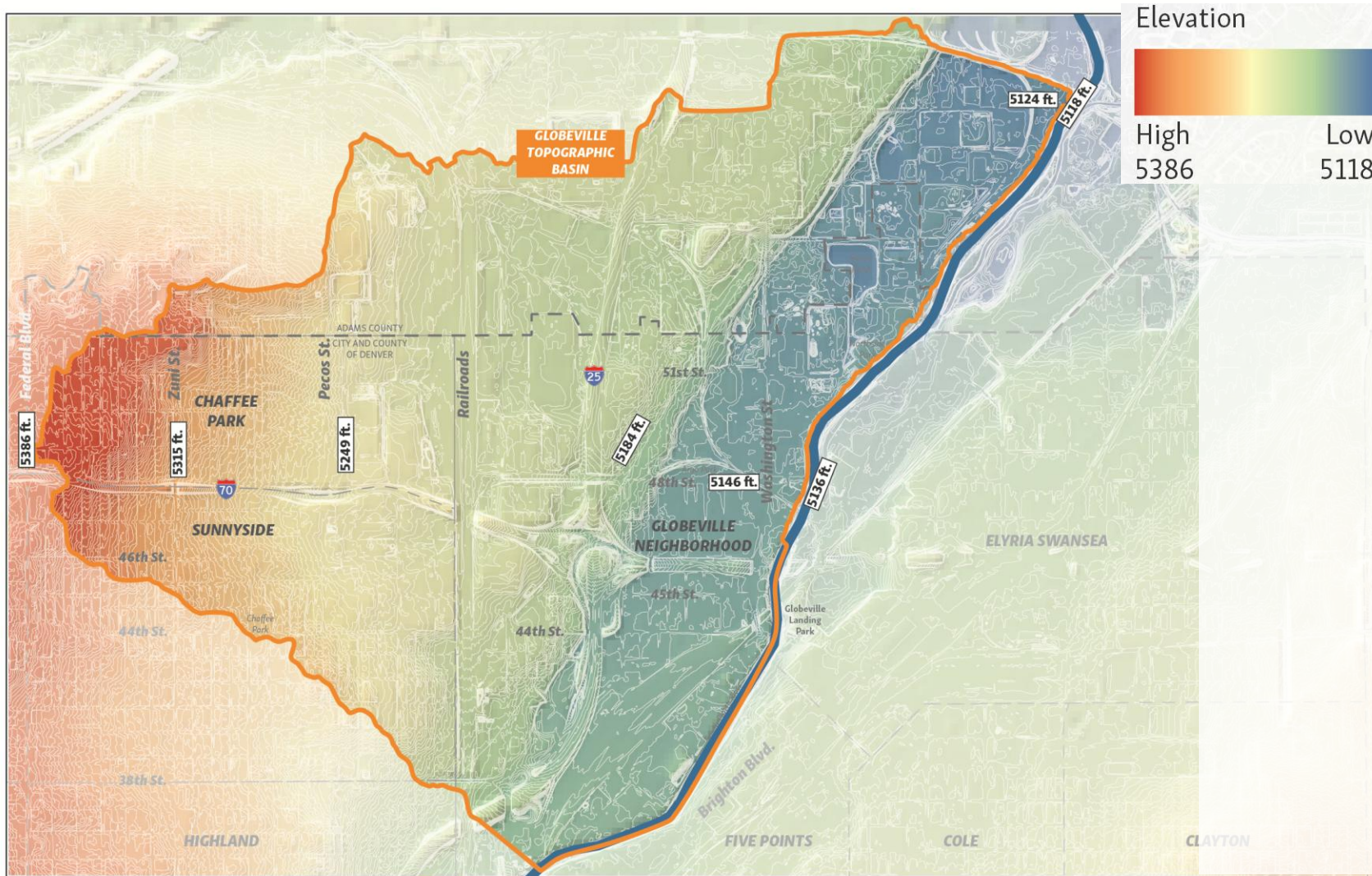
2008 – Levee



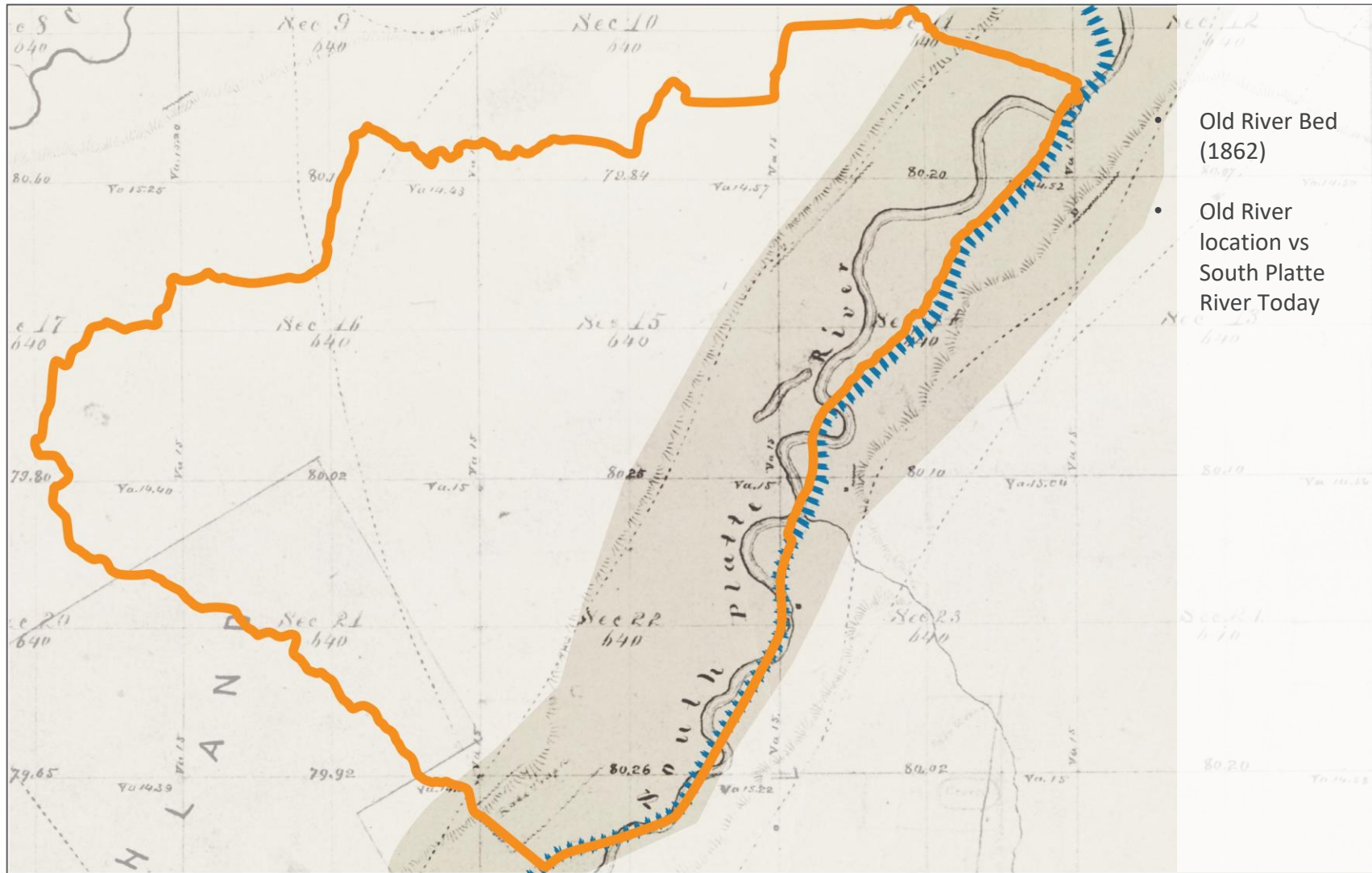
Denver's Topography



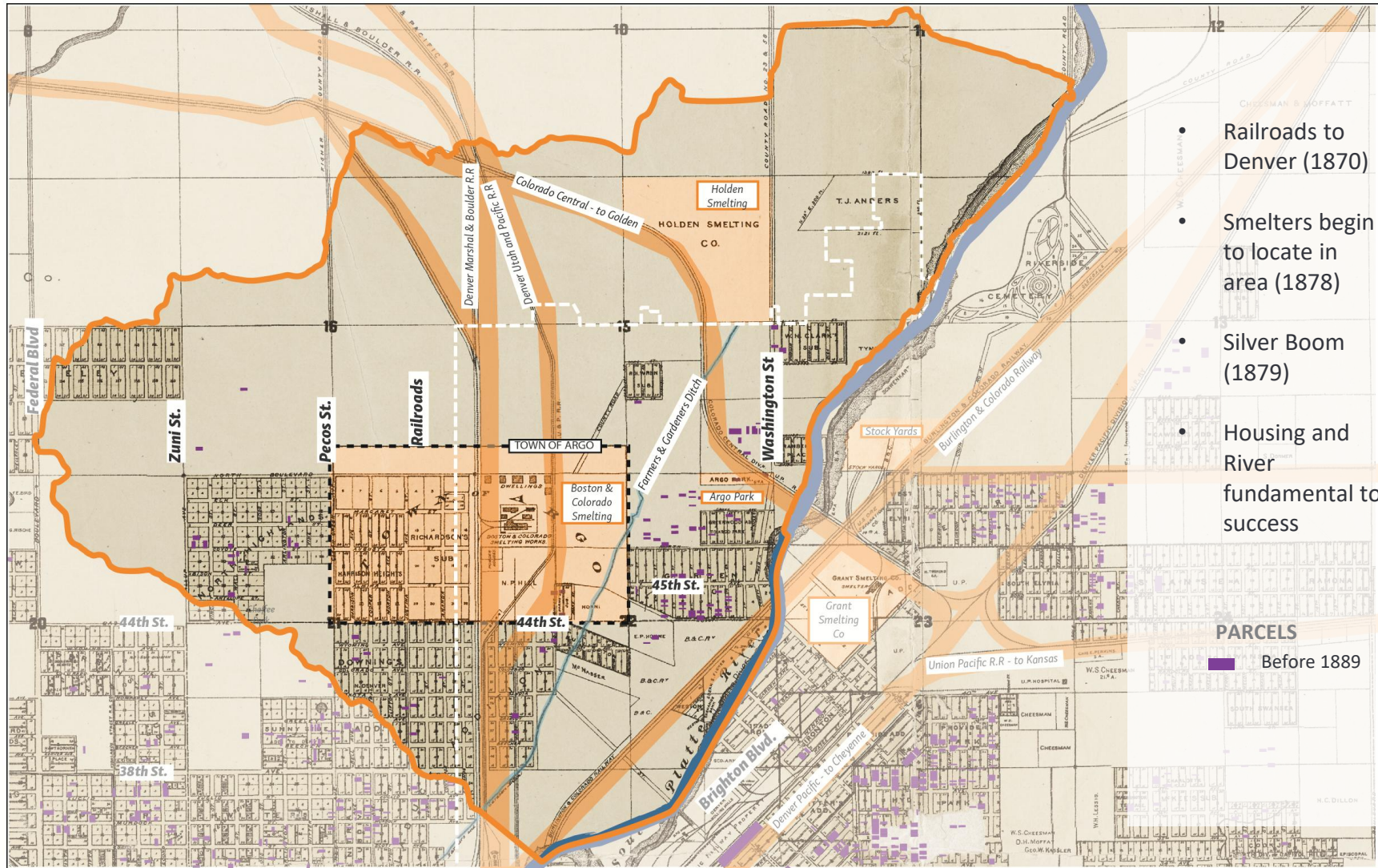
Basin Topography



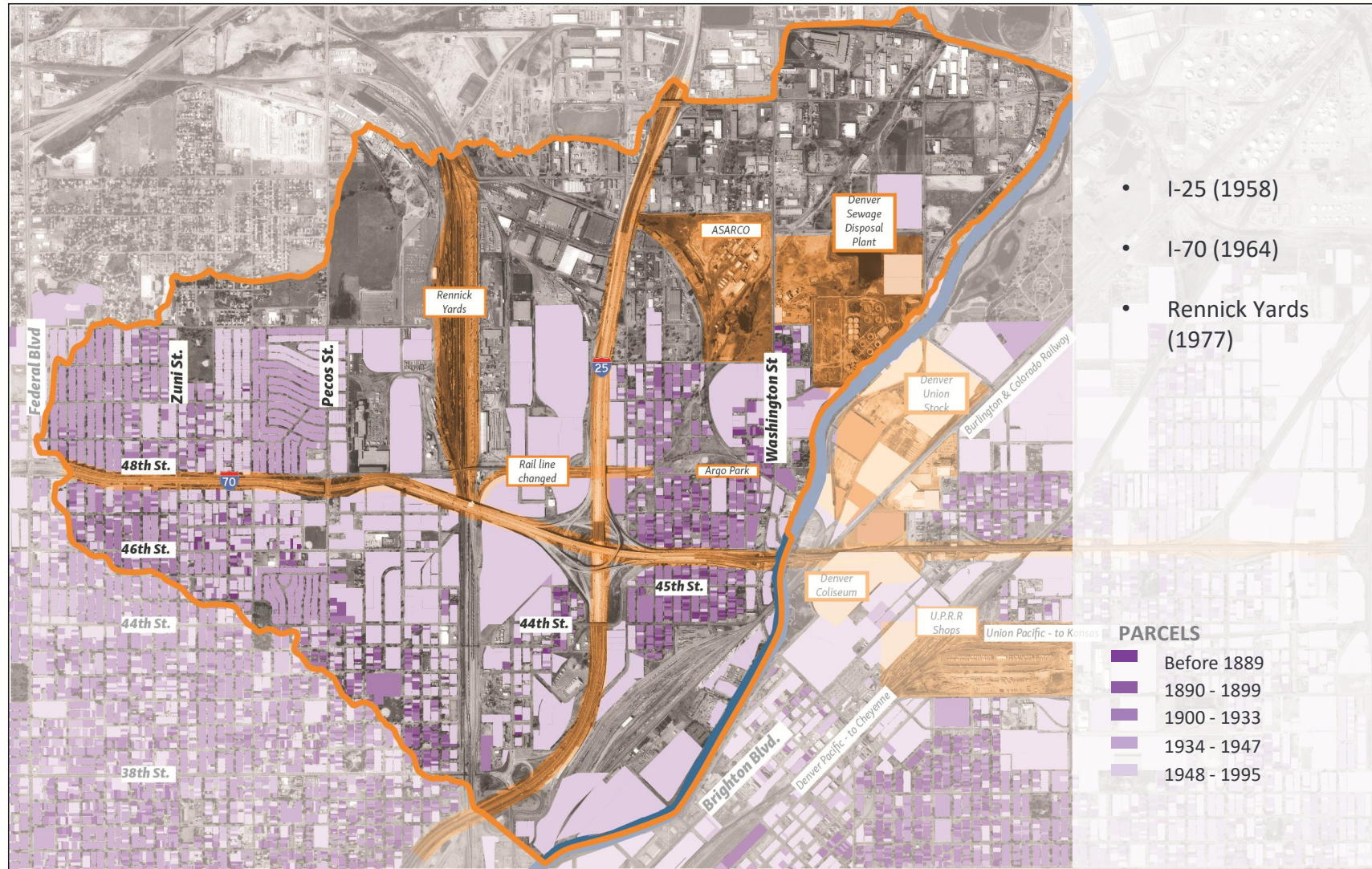
Historic Riverbed



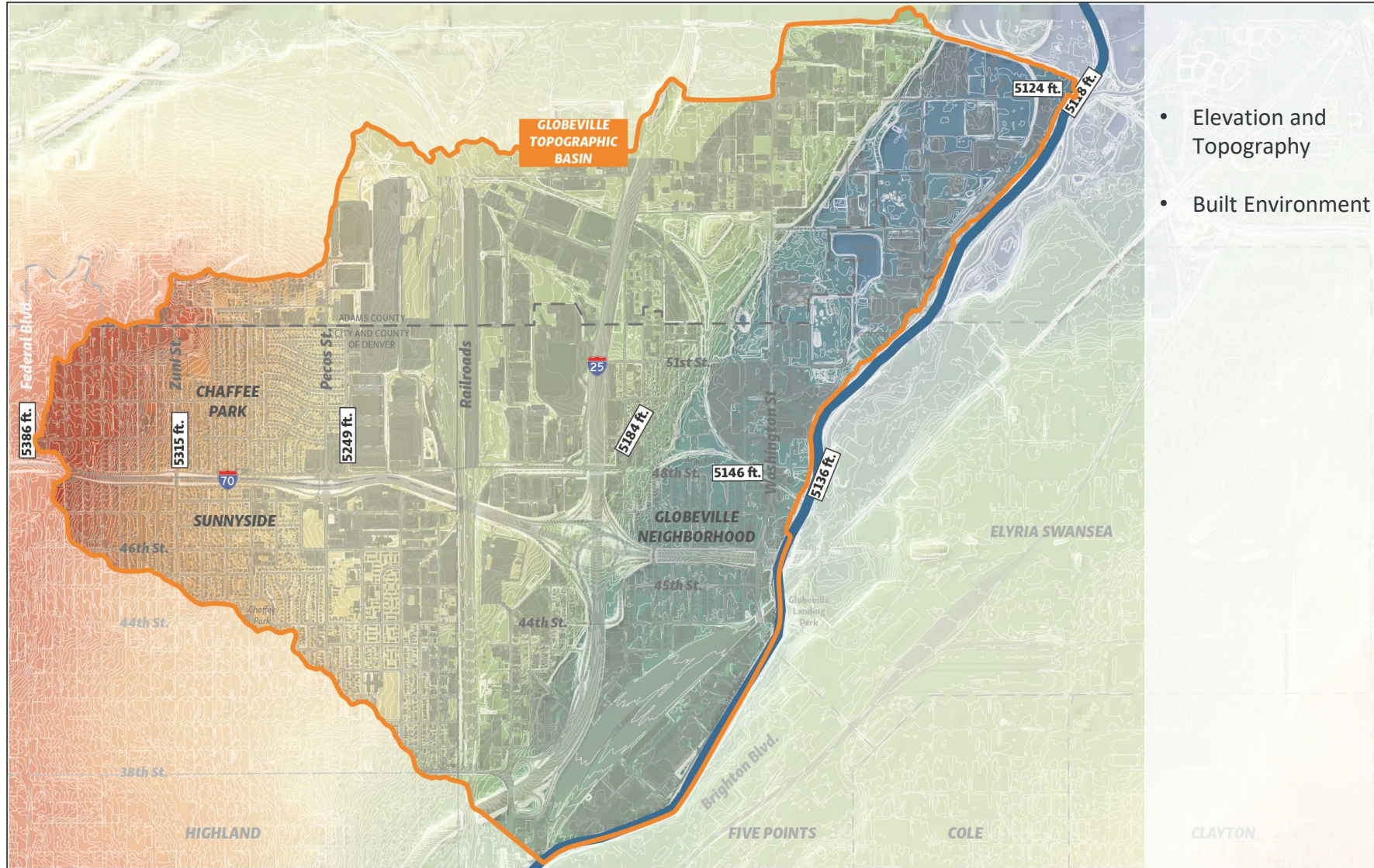
Early Industrial Development In Globeville



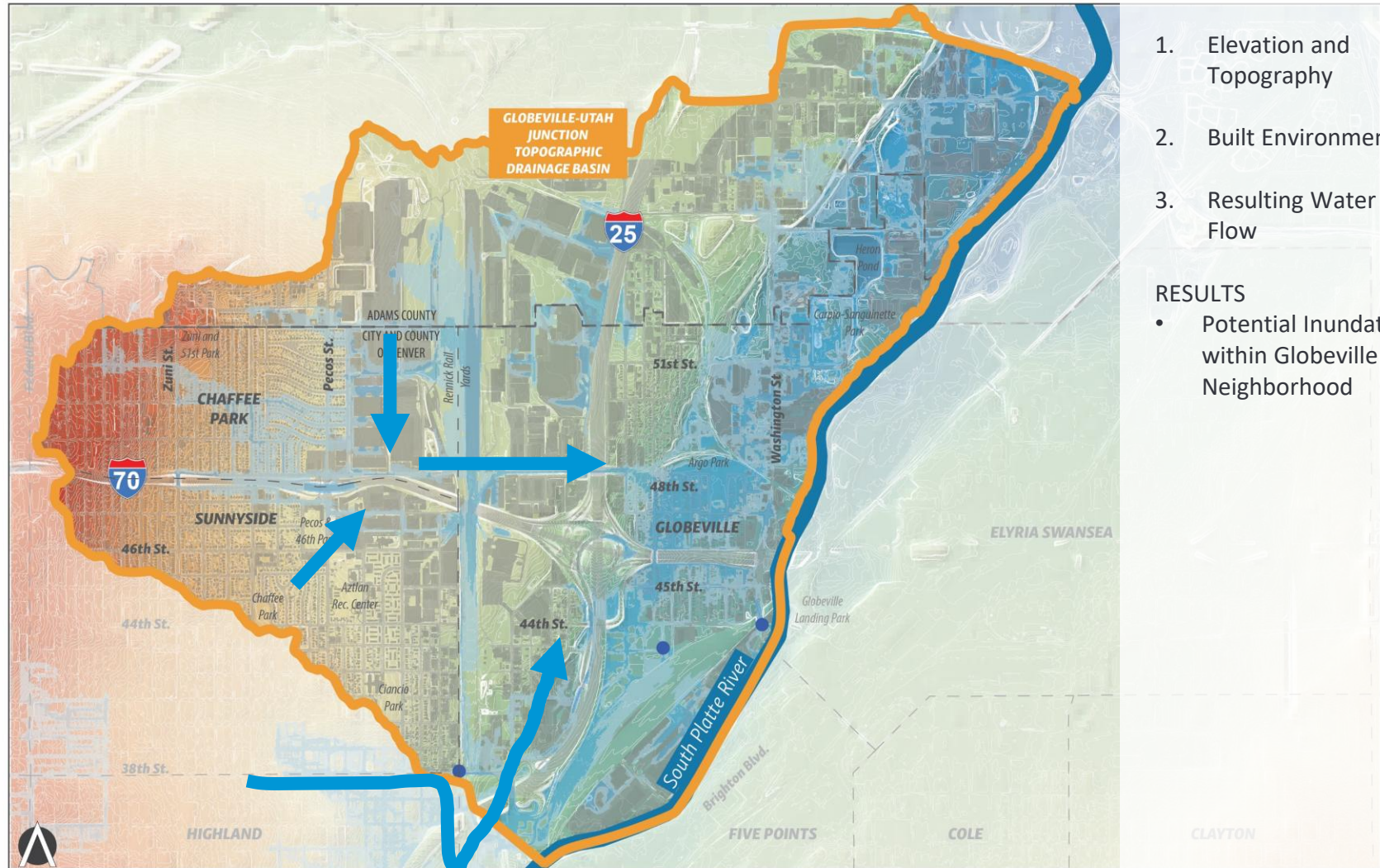
Highways and Growth in Industrial Land Use



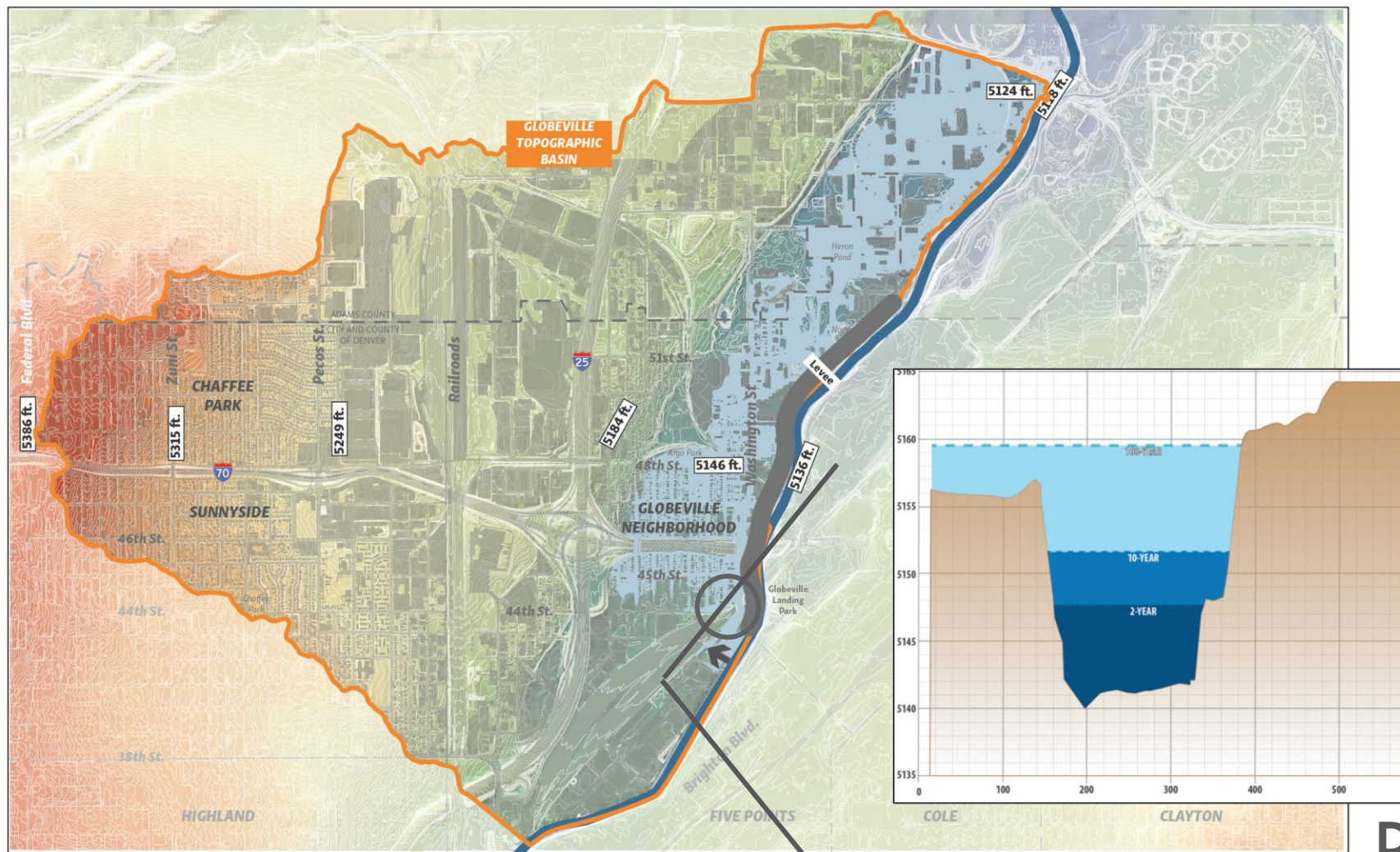
Today's Built Environment



Today's Potential Stormwater Inundation



Today's South Platte River Spill



A New Approach



Guided by Community Goals

PRIMARY GOALS

1. Alleviate Local Stormwater Flooding
2. Reduce the Risk of River Flooding and avoid floodplain designation
3. Improve Water Quality

SUPPORTING COMMUNITY GOALS

1. Create innovative solutions that create community benefit and reconnect community
2. Encourage natural and sustainable solutions
3. Provide individual support against flooding; communicate flood risk, strengthen partnerships, and improve safety during rain events
4. Coordinate and leverage concurrent projects in the area to ensure implementation
5. Be consistent with **Globeville Neighborhood Plan**



Studied through Community Tours, Work Sessions and Meetings



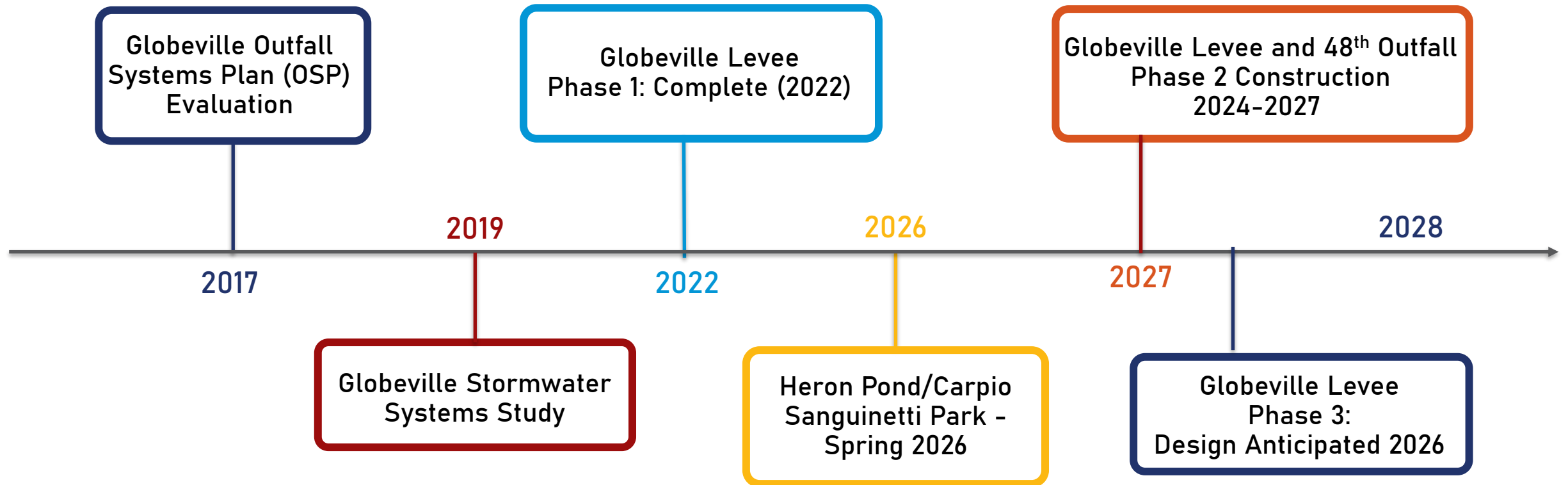
Identify
practical
solutions to
alleviate
flooding,
improve
water quality
and create
multiple
benefits for
the
community
.....with the
community

Key Outcomes:

Levee Improvements, 48th Avenue Outfall and Greenway



Timeline: How Long Did this Take?



Globeville Levee Improvements

Improvements:

- extend from W 31st St. to N Franklin St.
- raise the levee and prevent FEMA floodplain designation for approximately 700 properties

Partners: MHFD & DOTI

Funding: MHFD, Wastewater Enterprise Fund, \$30 M

Next Steps: Phase 3 Design

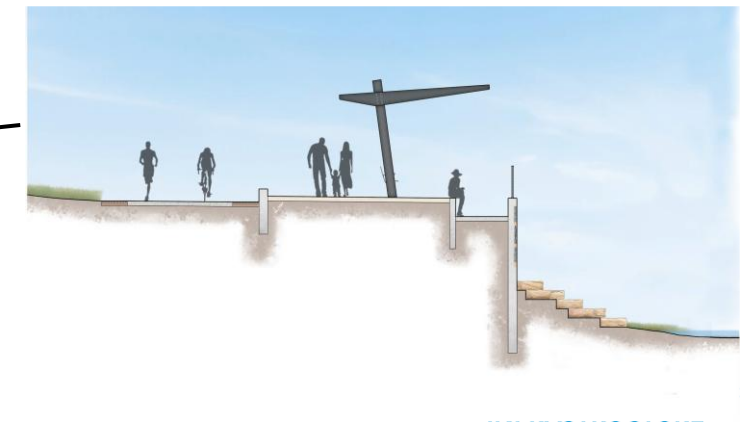


Globeville Levee Improvements



Globeville – Naranjo Civil Constructors

48th Avenue Outfall and Greenway (SPR to Washington St.)



Heron Pond Carpio Sanguinetti Park



Washington Street



Thank you