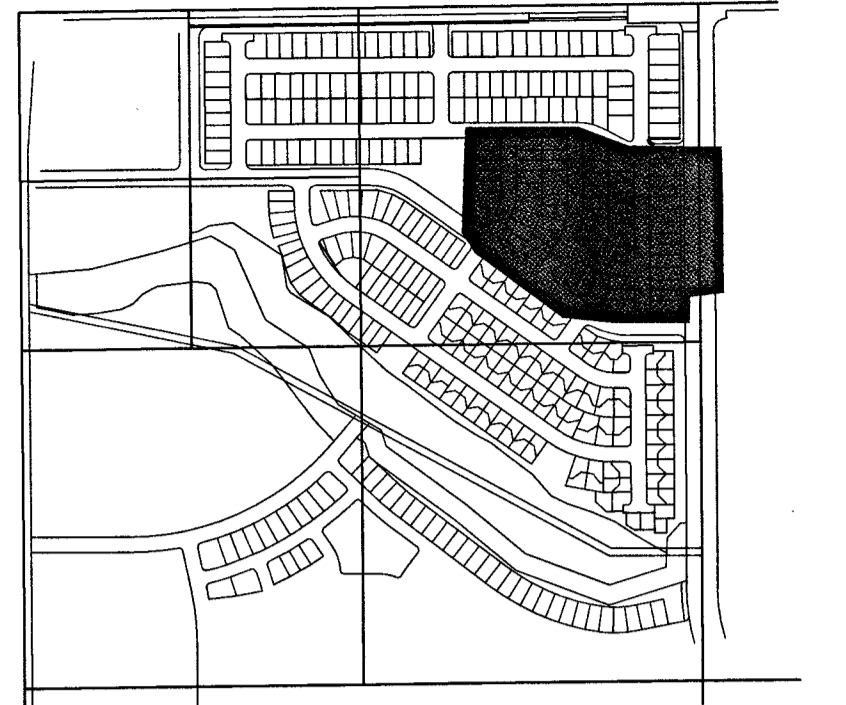


GREEN VALLEY RANCH FILING NO. 62

A RESUBDIVISION OF A PART OF LOT 1, MOFFITT TRACT AND A PART OF THE NORTHWEST QUARTER OF SECTION 15, TOWNSHIP 3 SOUTH, RANGE 66 WEST OF THE SIXTH PRINCIPAL MERIDIAN, CITY AND COUNTY OF DENVER, STATE OF COLORADO.
SHEET 6 OF 11

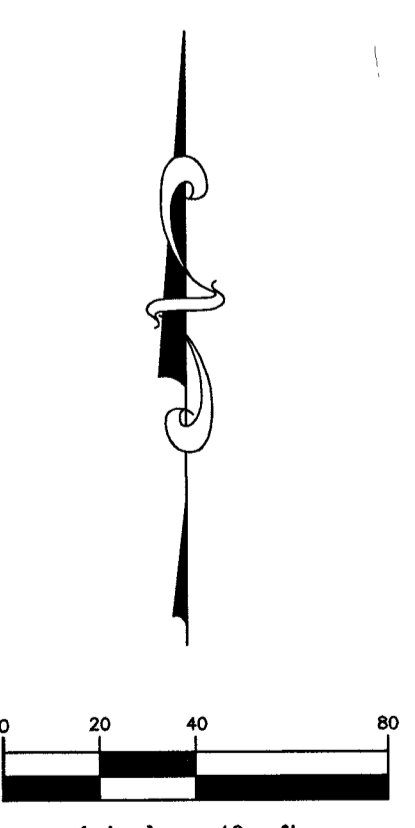


KEY MAP
NOT TO SCALE

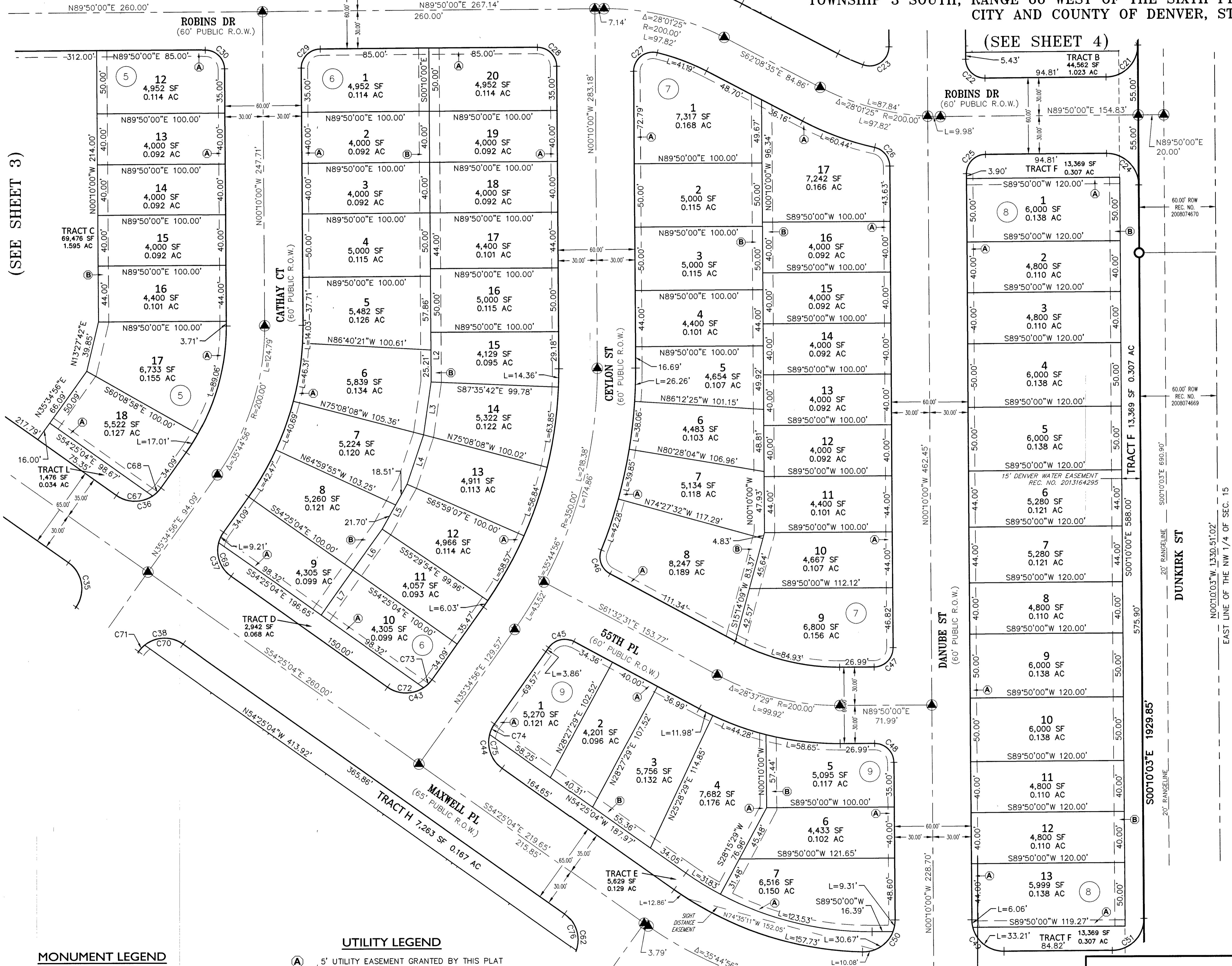
LINE TABLE		
LINE	BEARING	LENGTH
L2	S00°10'00"E	39.06'
L3	N08°11'20"E	42.06'
L4	N18°41'35"E	40.81'
L5	N29°12'10"E	40.21'
L6	N35°34'56"E	39.62'
L7	N35°34'56"E	43.09'

CURVE TABLE			
CURVE	DELTA	RADIUS	LENGTH
C24	89°59'57"	25.00'	39.27'
C25	90°00'00"	15.00'	23.56'
C26	77°01'57"	15.00'	20.17'
C27	104°08'23"	15.00'	27.26'
C28	90°00'00"	15.00'	23.56'
C29	90°00'00"	15.00'	23.56'
C30	90°00'00"	15.00'	23.56'
C35	90°00'00"	25.00'	39.27'
C36	90°00'00"	25.00'	39.27'
C37	90°00'00"	25.00'	39.27'
C38	90°00'00"	25.00'	39.27'
C43	90°00'00"	25.00'	39.27'
C44	90°00'00"	25.00'	39.27'
C45	83°27'30"	15.00'	21.85'
C46	83°27'30"	15.00'	21.85'
C47	90°00'00"	15.00'	23.56'
C48	90°00'00"	15.00'	23.56'
C49	90°00'00"	25.00'	39.27'
C50	91°38'43"	25.00'	39.99'
C51	90°00'03"	25.00'	39.27'

CURVE TABLE			
CURVE	DELTA	RADIUS	LENGTH
C62	90°00'00"	25.00'	39.27'
C67	68°53'59"	25.00'	30.06'
C68	21°06'01"	25.00'	9.21'
C69	68°53'59"	25.00'	30.06'
C70	73°58'44"	25.00'	32.28'
C71	16°01'16"	25.00'	6.99'
C72	68°53'59"	25.00'	30.06'
C73	21°06'01"	25.00'	9.21'
C74	21°06'01"	25.00'	9.21'
C75	68°53'59"	25.00'	30.06'
C76	73°58'44"	25.00'	32.28'



FOR AND ON BEHALF OF
AZTEC CONSULTANTS, INC.



(SEE SHEET 3)

(SEE SHEET 4)

(SEE SHEET 7)

MONUMENT LEGEND

- SET #5 REBAR WITH 1-1/4" ORANGE PLASTIC CAP STAMPED AZTEC LS 25645
- RANGE POINT: MONUMENT TO BE SET BY OTHERS IN A RANGE BOX AFTER CONSTRUCTION OF THE STREETS.

UTILITY LEGEND

- (A) 5' UTILITY EASEMENT GRANTED BY THIS PLAT
- (B) 8' UTILITY EASEMENT GRANTED BY THIS PLAT
- (C) ACCESS AND UTILITY EASEMENT GRANTED BY THIS PLAT
- (D) 5' SIDEWALK EASEMENT GRANTED BY THIS PLAT

AZTEC
CONSULTANTS, INC.
300 East Mineral Ave., Suite 1
Littleton, Colorado 80122
Phone: (303) 713-1898
Fax: (303) 713-1897
www.aztecconsultants.com
Aztec Proj. No.: 19315-14

DEVELOPER
OAKWOOD HOMES
4908 TOWER ROAD
DENVER, COLORADO 80249-6684
(303) 486-8500

DATE OF PREPARATION:	2015-06-17
SCALE:	1" = 40'
SHEET 6 OF 11	