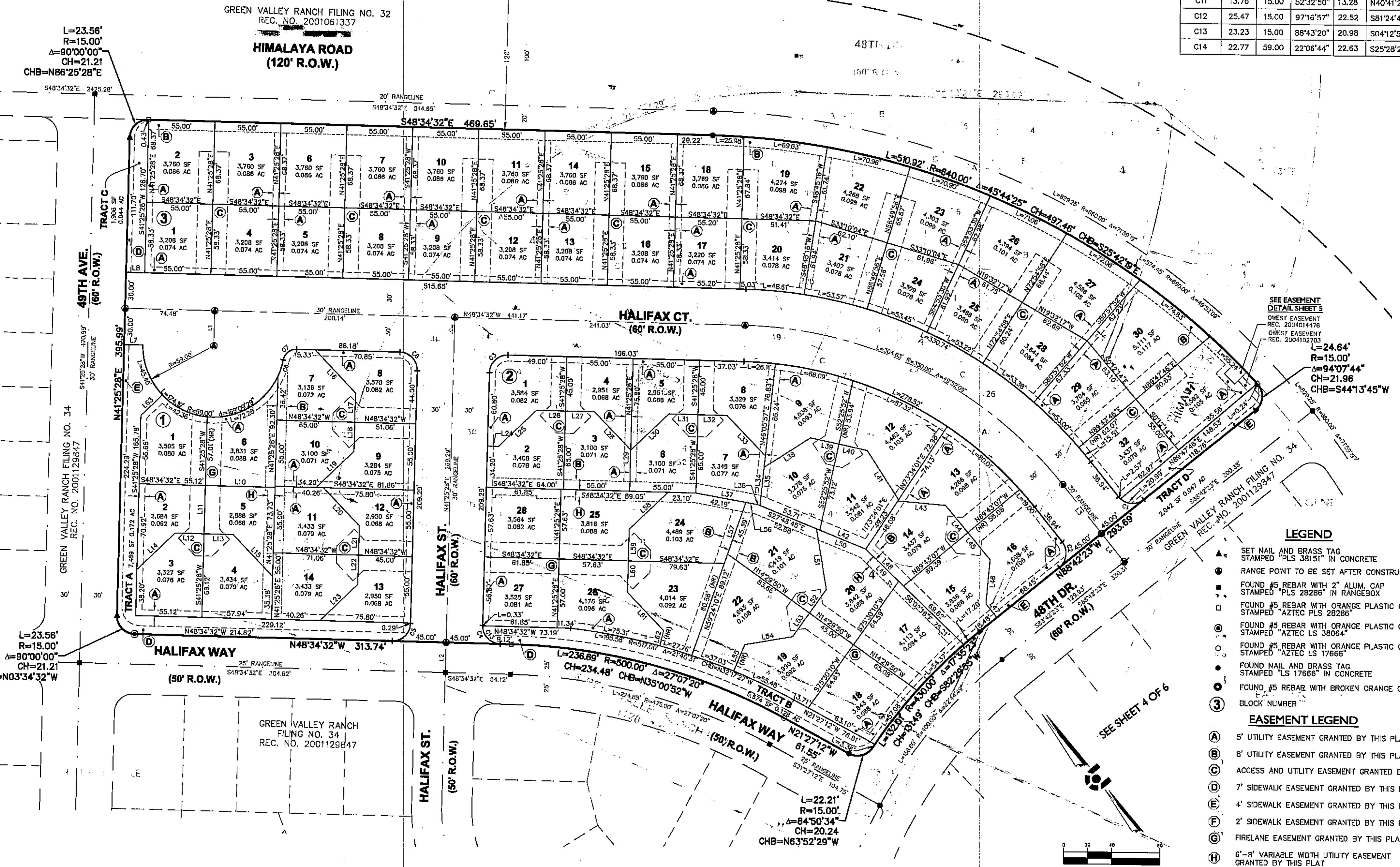


GREEN VALLEY RANCH FILING NO. 70
 A PART OF THE SOUTHEAST QUARTER OF SECTION 15 AND THE NORTHEAST QUARTER OF SECTION 22,
 TOWNSHIP 3 SOUTH, RANGE 66 WEST OF THE SIXTH PRINCIPAL MERIDIAN,
 CITY AND COUNTY OF DENVER, STATE OF COLORADO

CURVE TABLE					
CURVE #	LENGTH	RADIUS	DELTA	CHORD	CHORD BEARING
C1	23.56	15.00	90°00'00"	21.21	S43°42'23"E
C2	23.56	15.00	90°00'00"	21.21	N46°17'37"E
C3	23.56	15.00	90°00'00"	21.21	S86°25'28"W
C4	23.56	15.00	90°00'00"	21.21	S03°34'32"E
C5	23.56	15.00	90°00'00"	21.21	N86°25'28"E
C6	23.56	15.00	90°00'00"	21.21	N03°34'32"W
C7	15.38	11.00	80°07'45"	14.16	N88°38'24"W
C8	14.10	59.00	13°41'23"	14.06	N58°08'25"E
C9	25.47	15.00	97°16'57"	22.52	S01°18'19"E
C10	13.76	15.00	52°32'50"	13.28	N86°45'46"E
C11	13.76	15.00	52°32'50"	13.28	N40°41'24"W
C12	25.47	15.00	97°16'57"	22.52	S81°24'45"W
C13	23.23	15.00	88°43'20"	20.98	S04°12'51"E
C14	22.77	59.00	22°06'44"	22.63	S25°28'21"E



SEE EASEMENT
 DETAIL SHEET 5
 WEST EASEMENT
 REC. 2004014476
 WEST EASEMENT
 REC. 2004102703

- LEGEND**
- ▲ SET NAIL AND BRASS TAG STAMPED "PLS 38151" IN CONCRETE
 - RANGE POINT TO BE SET AFTER CONSTRUCTION
 - FOUND #5 REBAR WITH 2" ALUM. CAP STAMPED "PLS 28286" IN RANGEBOX
 - FOUND #5 REBAR WITH ORANGE PLASTIC CAP STAMPED "AZTEC PLS 28286"
 - FOUND #5 REBAR WITH ORANGE PLASTIC CAP STAMPED "AZTEC LS 38064"
 - FOUND #5 REBAR WITH ORANGE PLASTIC CAP STAMPED "AZTEC LS 17666"
 - FOUND NAIL AND BRASS TAG STAMPED "LS 17666" IN CONCRETE
 - FOUND #5 REBAR WITH BROKEN ORANGE CAP
 - ③ BLOCK NUMBER
- EASEMENT LEGEND**
- (A) 5' UTILITY EASEMENT GRANTED BY THIS PLAT
 - (B) 8' UTILITY EASEMENT GRANTED BY THIS PLAT
 - (C) ACCESS AND UTILITY EASEMENT GRANTED BY THIS PLAT
 - (D) 7' SIDEWALK EASEMENT GRANTED BY THIS PLAT
 - (E) 4' SIDEWALK EASEMENT GRANTED BY THIS PLAT
 - (F) 2' SIDEWALK EASEMENT GRANTED BY THIS PLAT
 - (G) FIRELANE EASEMENT GRANTED BY THIS PLAT
 - (H) 6'-8' VARIABLE WIDTH UTILITY EASEMENT GRANTED BY THIS PLAT

GREEN VALLEY RANCH FILING NO. 70

INITIAL PLAN
 RELEASE: 3/30/15
 DESIGNED BY: JCA
 DRAWN BY: JCA
 CHECKED BY: TMG

JOB NO.
 14-040
 SHEET
 3 OF 6

CORE CONSULTANTS

CIVIL ENGINEERING
 DEVELOPMENT CONSULTING
 NATURAL RESOURCES
 LAND SURVEYING
 1850 W. 14th Ave. Suite 109
 Lakewood, CO 80202

NO.	DESCRIPTION	DATE	BY