



Proposed Land Agreement Denver Parks & Recreation & Children's Museum of Denver

An opportunity to better serve our community



Four Decades of Kid-Powered Learning

- Founded by parents, educators and community leaders in 1973
- Was a mobile Museum before moving to Bannock Street in 1975
- Have been in Platte River Valley site since 1984

1984



2012



Site



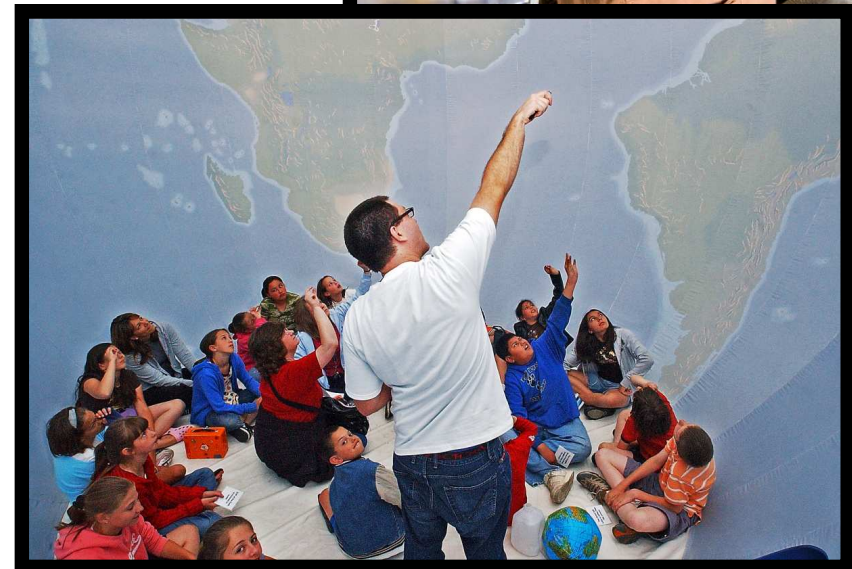
Who We Are



The Children's Museum of Denver provides a safe, inspiring place for children to push the boundaries of their imagination, gain self-confidence and learn about the world around them.

How We Reach Our Audience

- General admission
- Memberships
- Sponsored admissions & memberships
- Education programs
(drop in, onsite, outreach)
- Collaborative partnerships
- Community events & festivals



Making a Difference

- Build essential early learning skills, preparing children for school and life
- Teach math, science and literacy concepts
- Celebrate and provide access to the arts
- Foster creativity, innovation and critical thinking
- Promote good health, nutrition and active play



Need for Growth

Every child deserves a safe, inspiring place to learn, create and grow. **We face a big challenge:**



There simply isn't enough space to hold the burgeoning number of visiting young scientists, artists, explorers and inventors.

Expansion will create a Children's Museum better-equipped to serve the unique needs of our growing, changing community.

Expanding the Museum

- New entrance
- More amenities
- New flexible spaces for school programs, Museum programs and temporary exhibits
- New exhibits - Air, Water, Teaching Kitchen, Climbing, Arts, Outdoor

Expansion Plans



Children's Museum Denver . Entry View

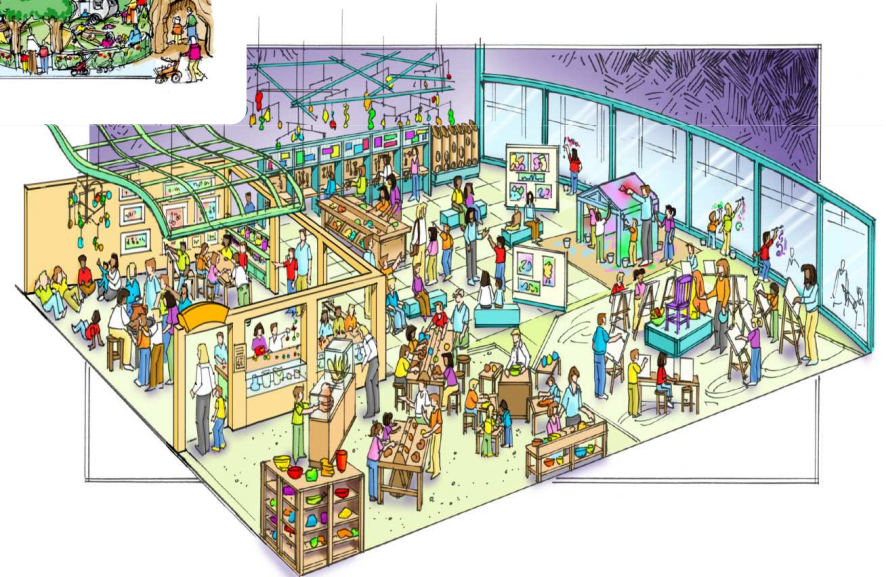
Concept Design - Version 6.2 - August 23, 2011

Plaza View

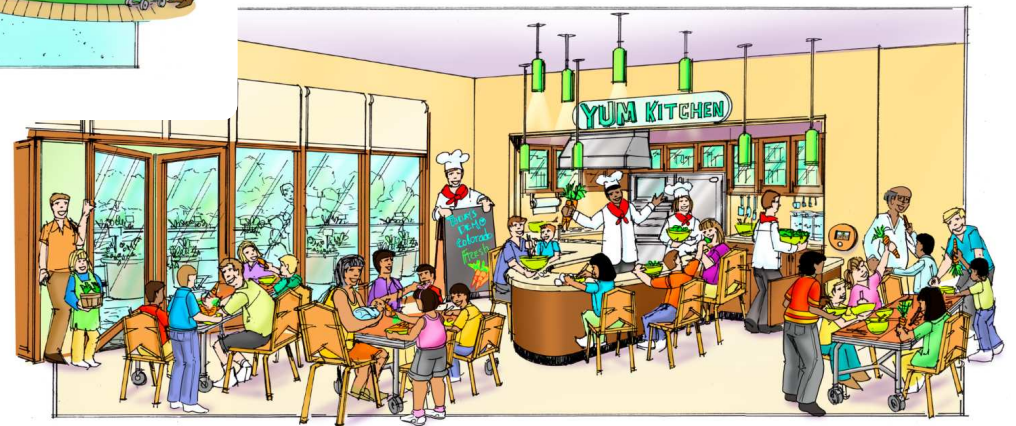
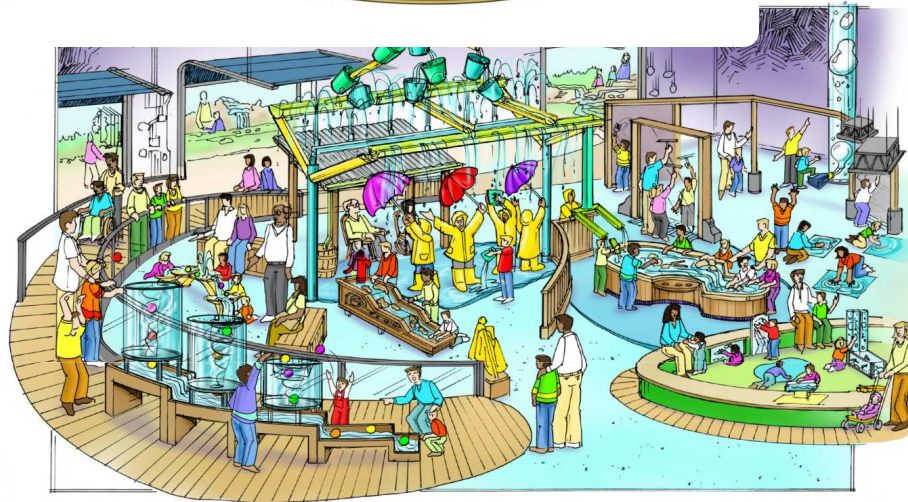
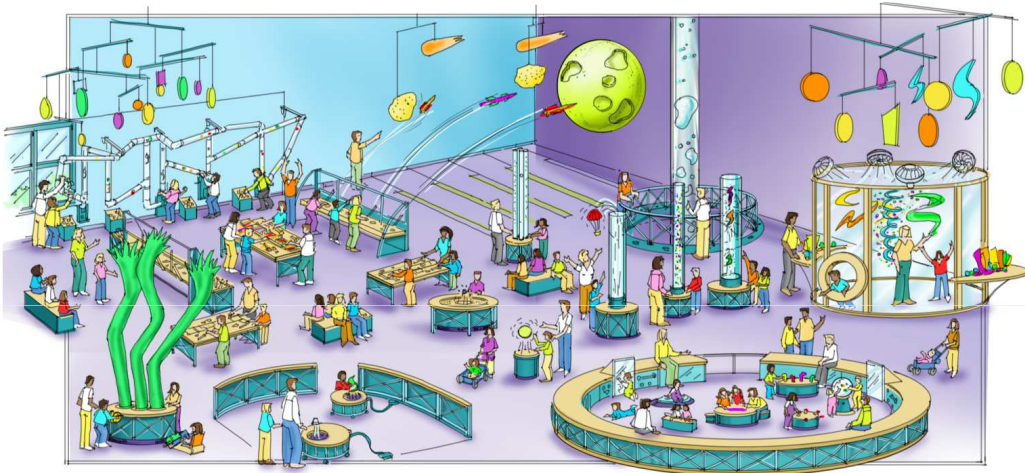


Children's Museum Denver . Bird's Eye View
Concept Design - February 2011 - August 2011

Interior Experiences



Interior Experiences



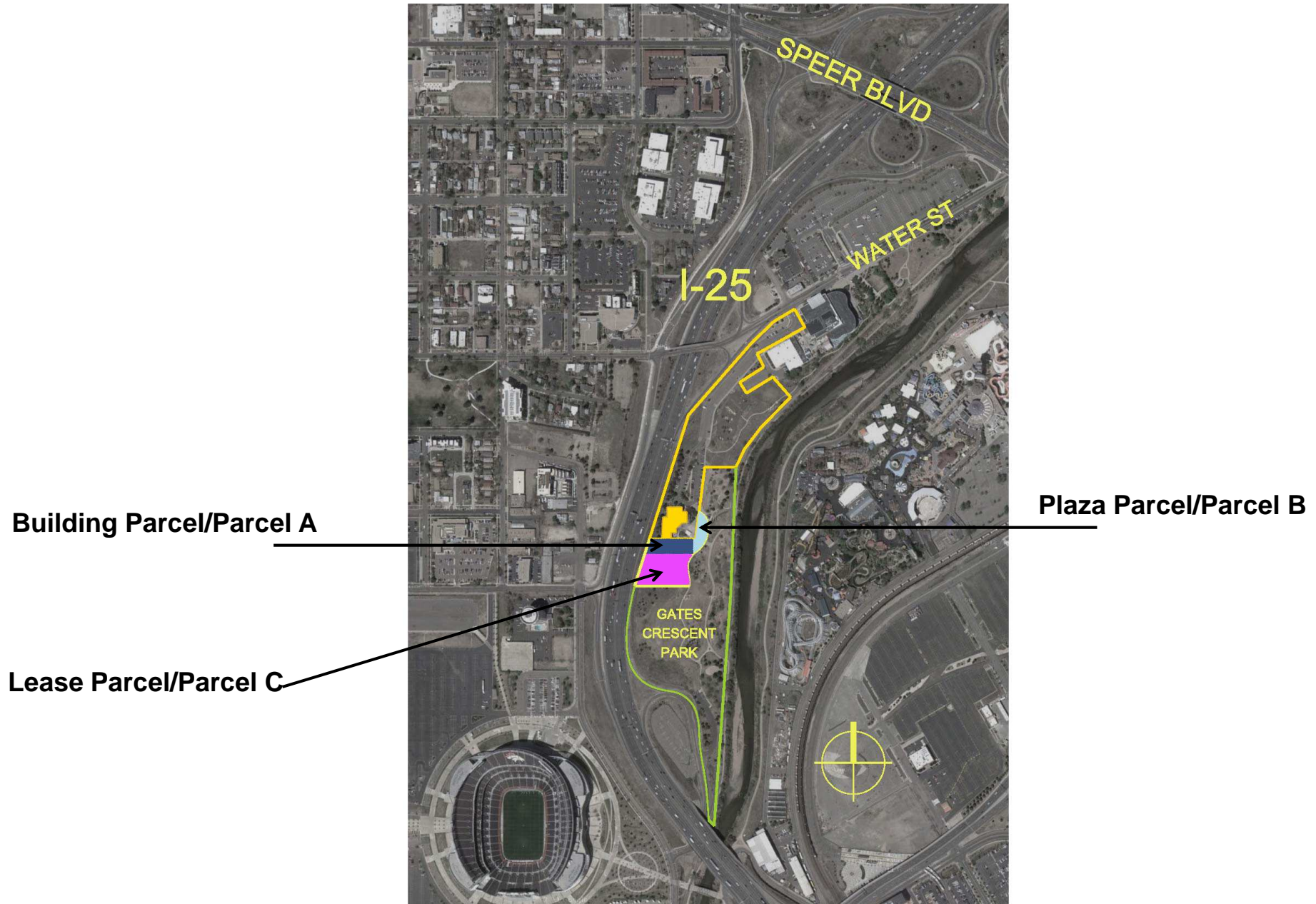
Outdoor



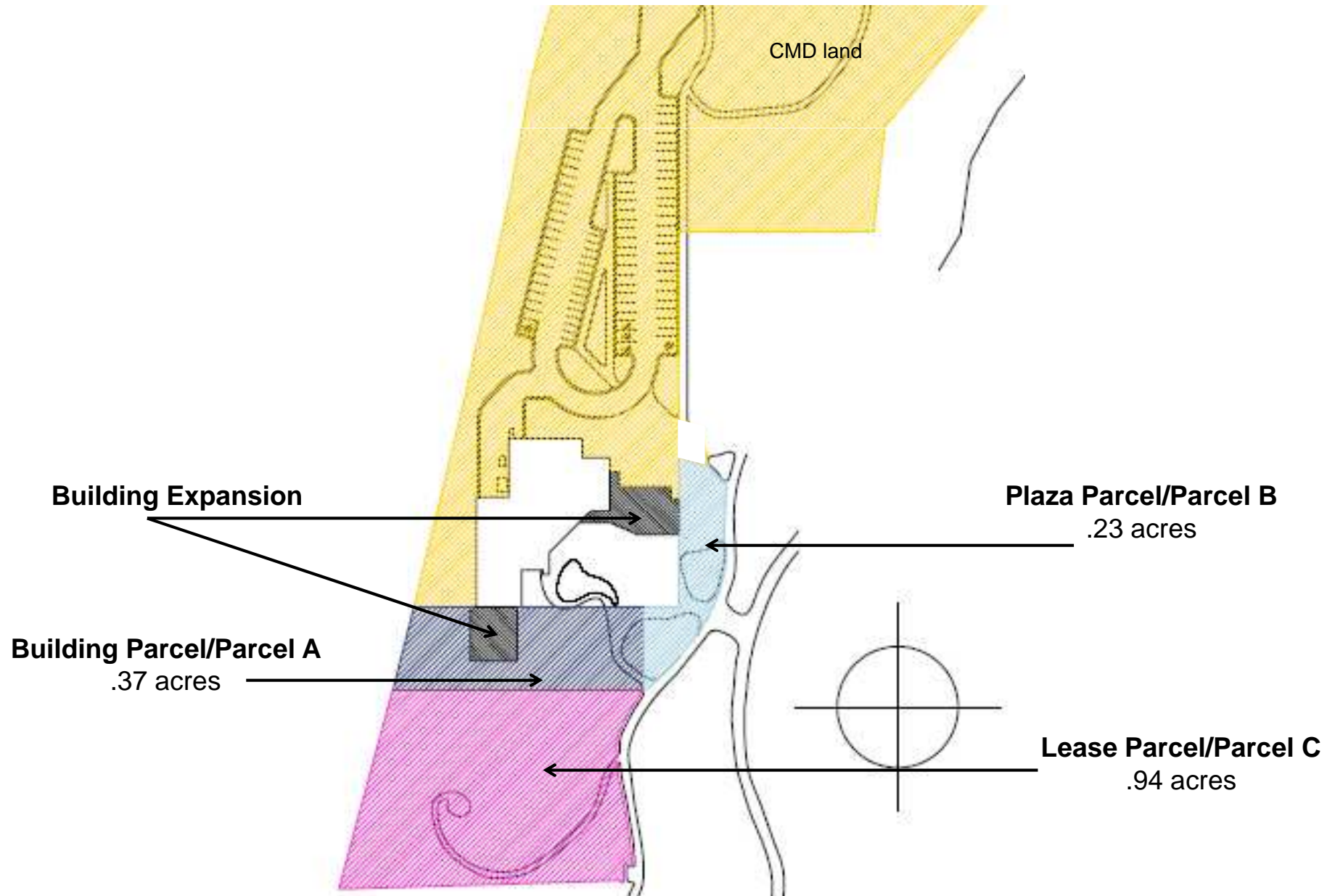


Remember
this?

Site



Sale & Lease Property



Agreement Highlights

- Purchase Parcels A & B - \$168,000
- Lease Parcel C - 20 year term (renewable), DP&R invited to participate in events/programs, plus five (5) free nights per year (April to Aug) for outdoor experience to be open to public in coordination with DP&R, and signed DP&R recognition on the parcel
- P&R Manager has approval role for design of experience elements and supporting plans
- DP&R and CMD will continue to work together to realize a cohesive vision



Our Process

- Held a Community Meeting on July 31
- Attended PRAB in September and received unanimous support
- Outreach to City Council Members
- Outreach to Registered Neighborhood Organizations including
 - Jefferson Park
 - La Alma / Lincoln Park
 - Sun Valley

Timeline

- Due Diligence – through Spring 2013
 - Environmental Work
 - Re-zoning
 - Survey (underway)
- Experience Design – Winter 2012/2013
- Project Ground Breaking – Winter 2013/2014
- Project Opening – Summer 2015

Questions