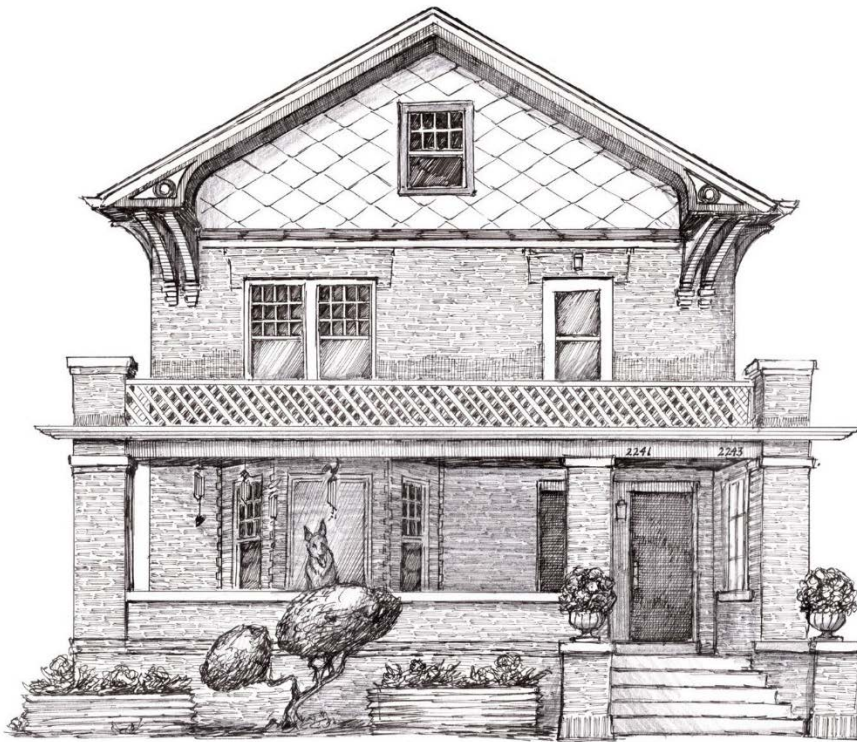


Photographs

Attach at least four digital photographs showing the views of the property from the public right of way and any important features or details. If available, include historic photographs of the structure.

Irving P. Andrew's home - 2241/43 York Street - Denver Landmark nomination application
5DV.32951
February 2022
PHOTOGRAPHS



Artist's sketch of Irving P. Andrews home -York Street Façade - (courtesy Sara Shears)



Streetscape view looking toward Irving P. Andrews home 2241/43 York St with St Ignatius Loyola Church in the background



East Façade - Irving P. Andrews home 2241/43 York St (ca.1985 -Polaroid courtesy of owner)



East Façade - Irving P. Andrews home 2241/43 York St (2022)



South Façade - Irving P. Andrews home 2241/43 York St with original garage structure at terminus of driveway accessed from York Street



West Façade looking towards circulation extension and covered porch with bubble skylights (later addition). Original garage visible to the right of the porch.



North Façade looking southwest -note enclosed north side of porch



North Façade looking southeast (note inset service wing at right)



View from front porch looking east towards City Park
(unchanged view since the home was constructed in 1914)



Paired Front doors
(First story dwelling 2241 York St. at left door/
Irving P. Andrew's former law office 2243 York Street – right door)



Detail: Bush hammered finish on concrete step/ threshold at front entry doors



Bay Window at front porch with toothed brick corner detailing, replacement vinyl windows in original openings with internal divisions to emulate original proportions and division



Boxed eave detail with paired corner brackets supported on brick corbels. Note: decorative cornice return detail and asbestos tile in diamond or fish scale pattern in gable end



Typical window details: corbelled brick surround, split face stone lug sill, and vinyl replacement window with double hung configuration with internal divisions in upper sash.



Partially raised basement with windows (north façade). Brick soldier course at grade level and brick belt course projecting above basement windows. Note masonry repointing over the years has resulted in a lack of uniform coloration in the mortar joints



A projecting elevated front porch looking northeast towards city park. Note brick columns extending to upper balcony level of porch. Painted stone (or concrete) caps a porch wall and columns. A brick soldier course at the grade level and slightly corbelled belt course wrap the house. Non-uniform mortar color is visible from repointing over the years.



North Façade -original garage



East Façade

Original garage with replacement garage door and steel lintel,
access is from York St. and not alley



North Façade

Original Garage, replacement pedestrian door and windows in original openings



West Façade -Original Garage

Boundary Map

Attach a map that graphically depicts the structure, the location of other significant features, and the boundaries of the designation.

