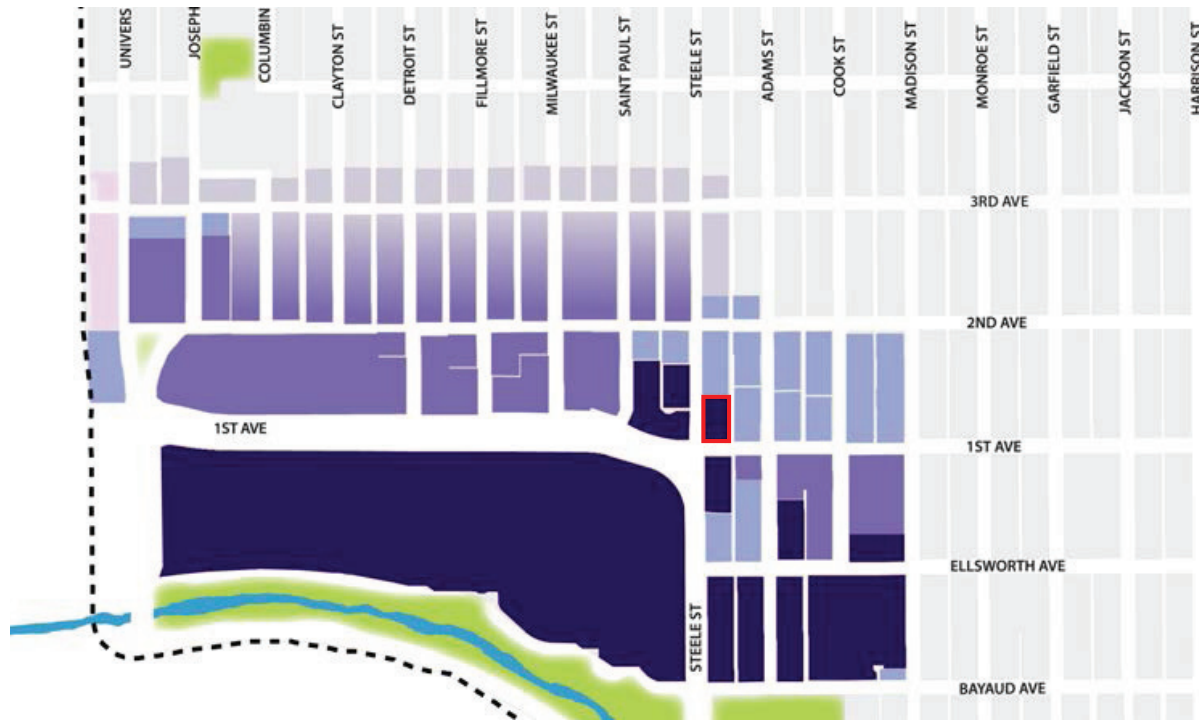
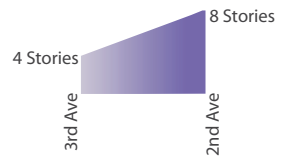


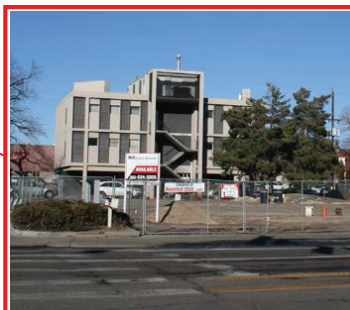
- 12 Stories
- 8 Stories
- CCN Transition* - see graphic below
- 5 Stories
- 4 Stories
- 3 Stories
- Other subareas
- 1st Ave + Steele St

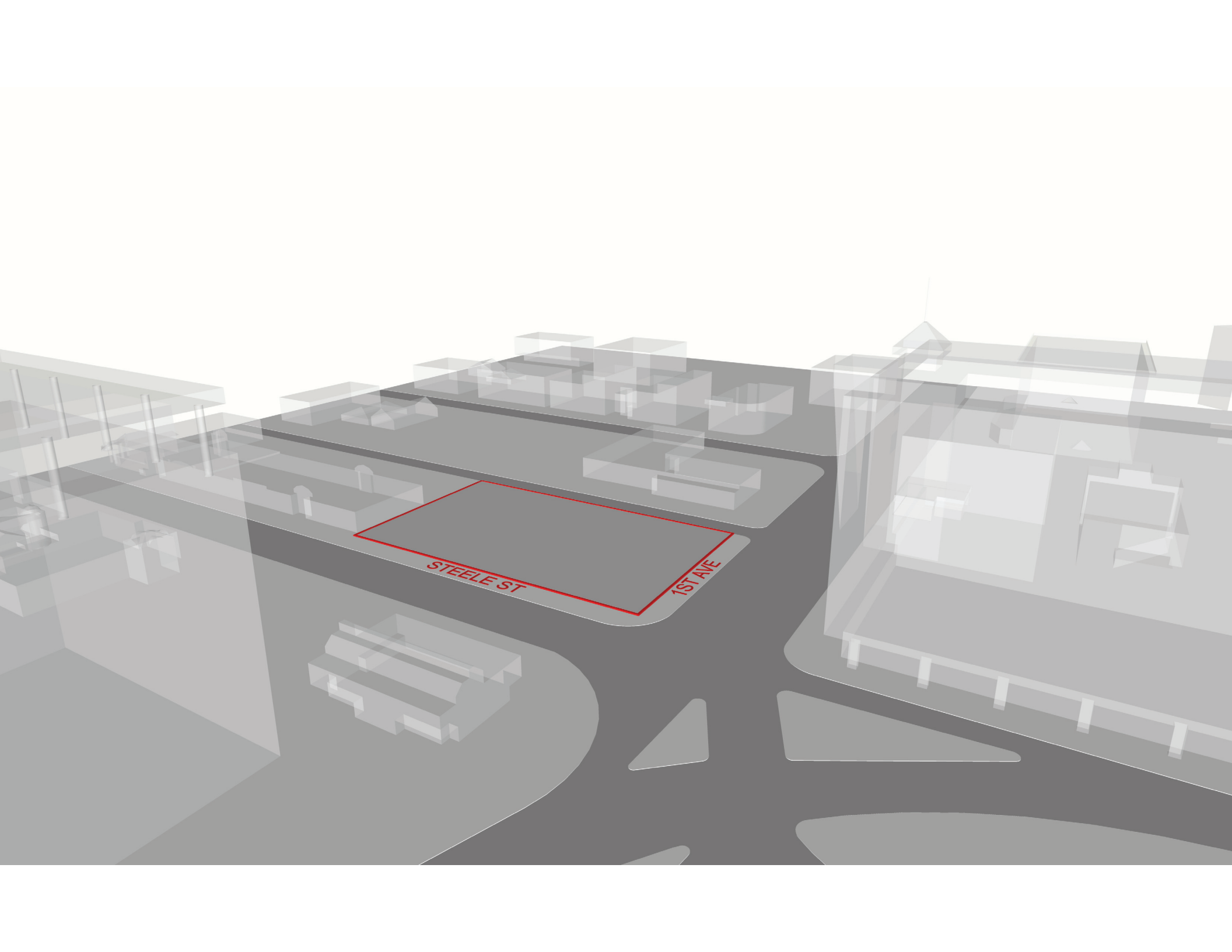


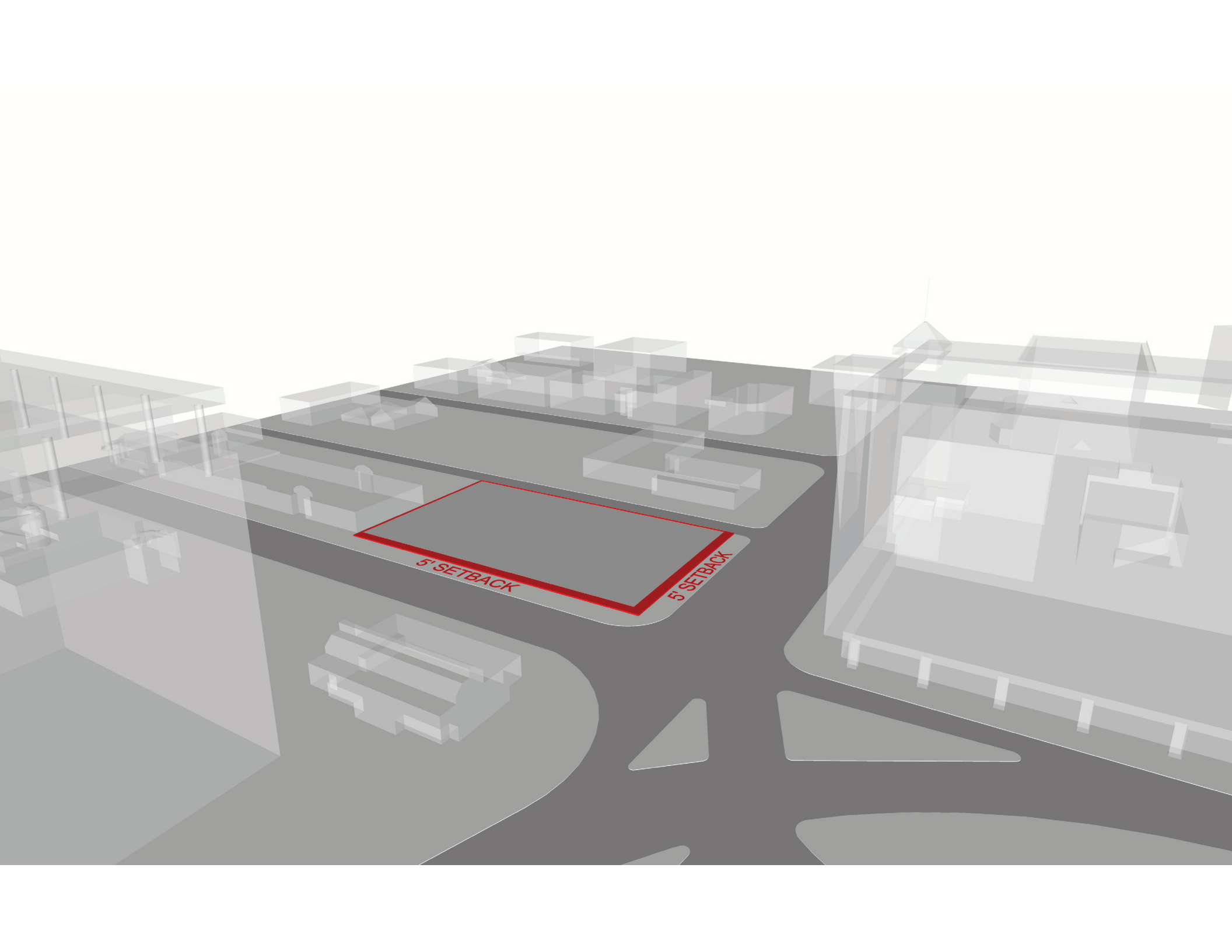
Maximum building heights map - Cherry Creek Shopping District

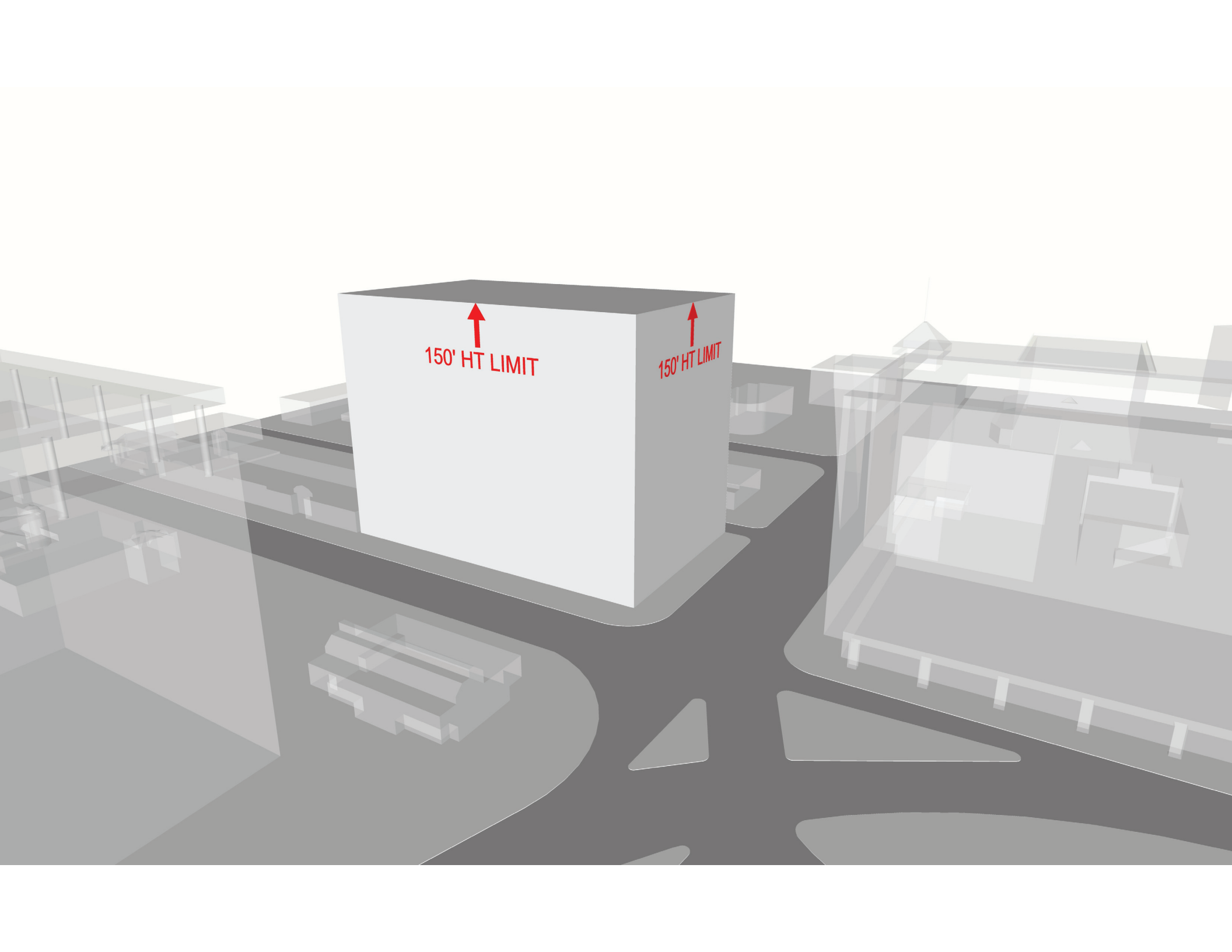


*CCN Transition - 8 stories at 2nd Ave and 4 stories at 3rd Ave



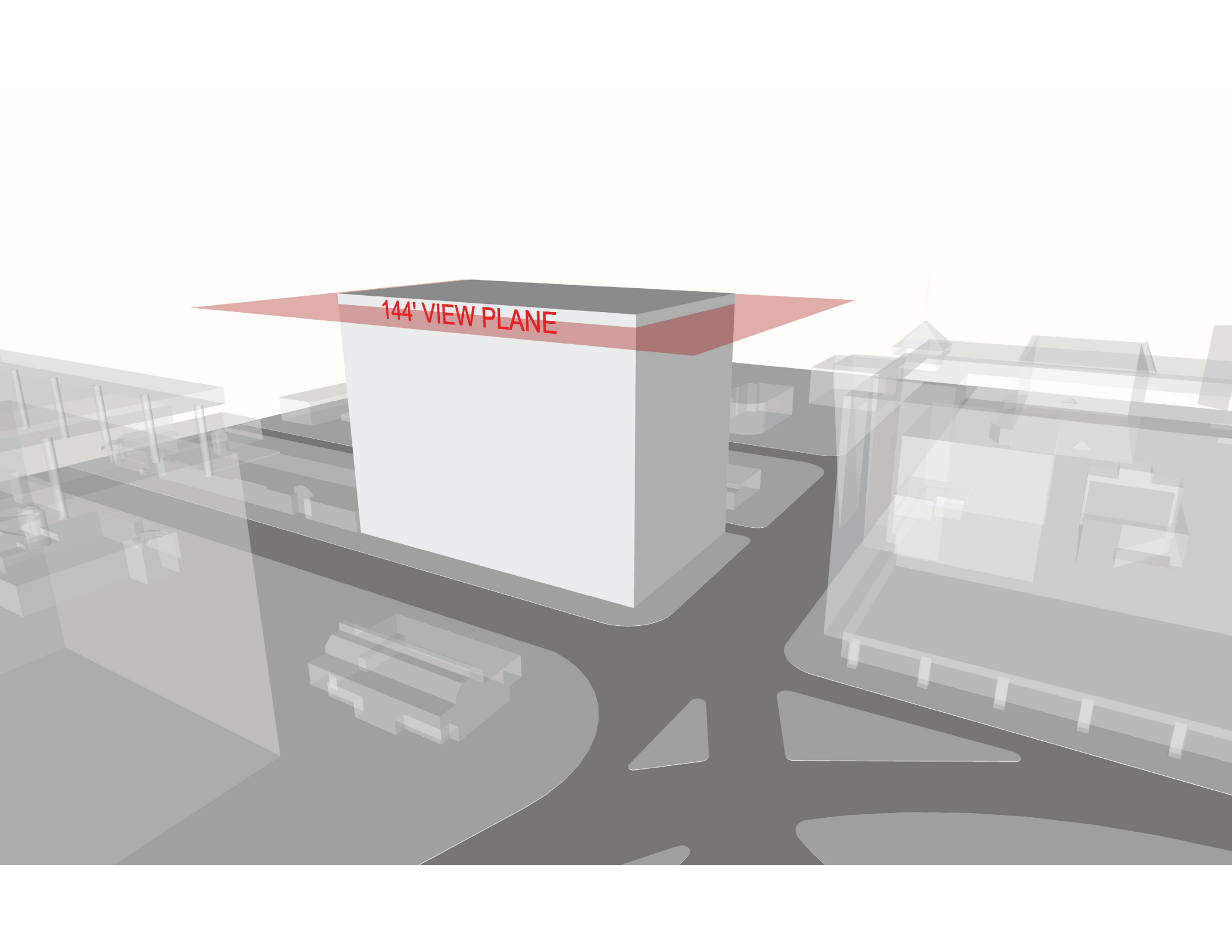




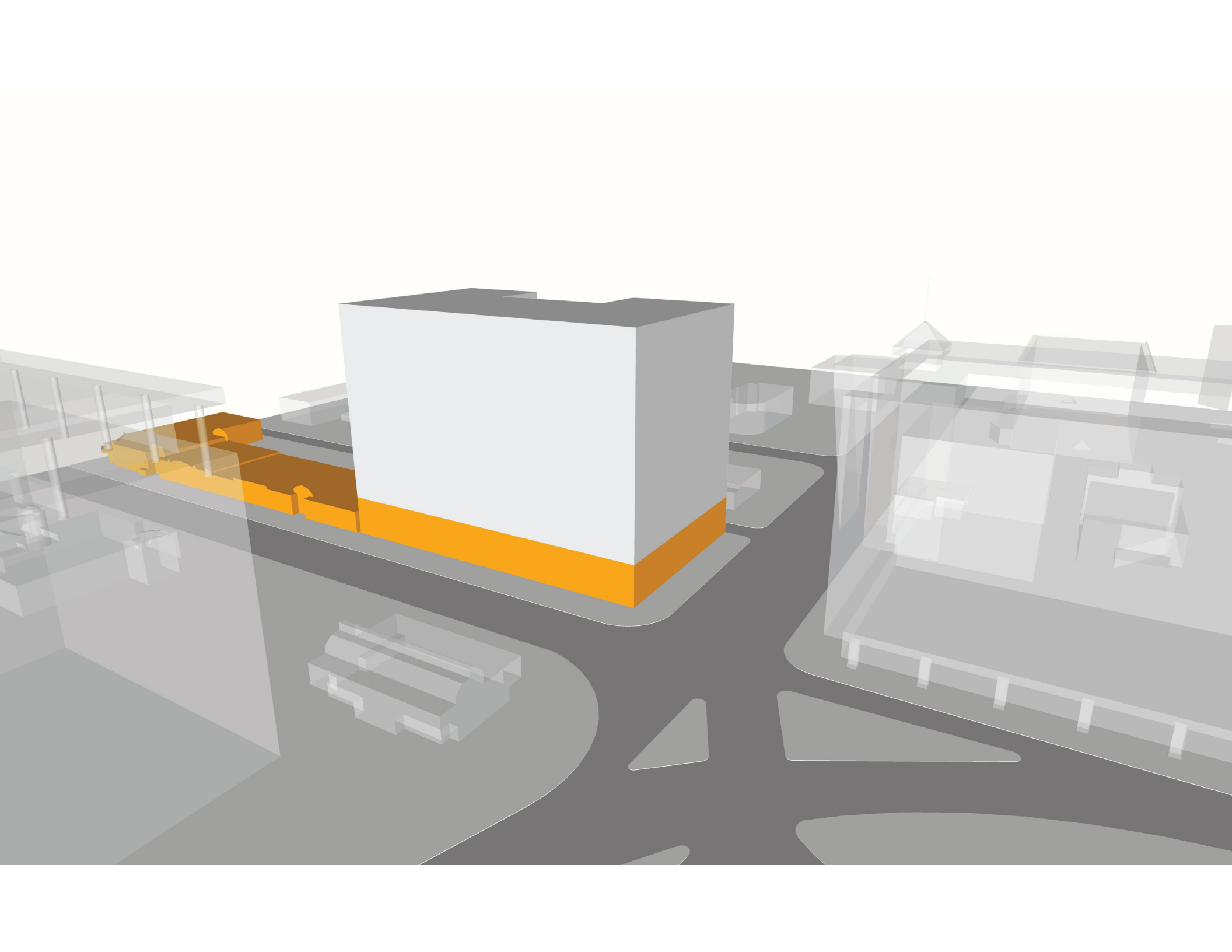


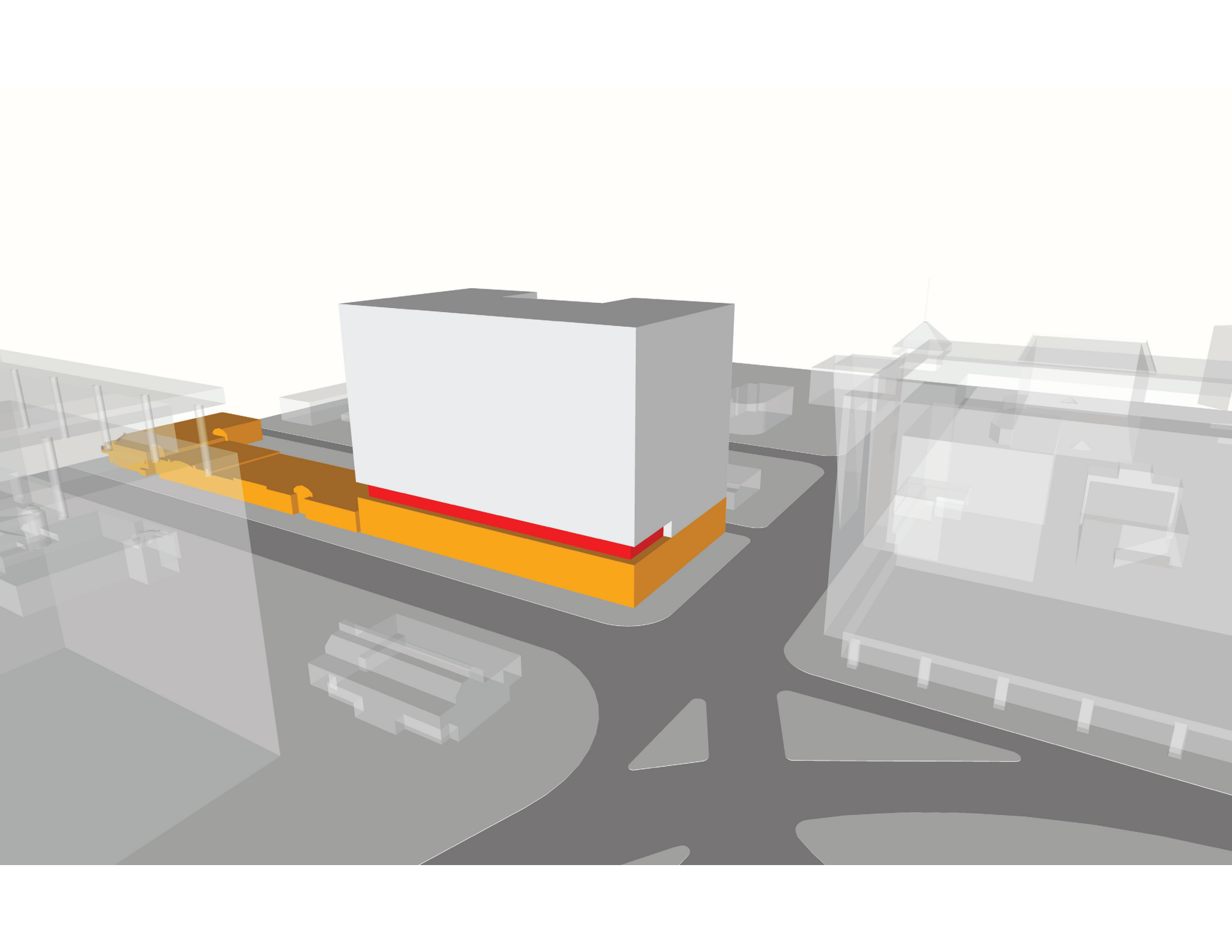
↑
150' HT LIMIT

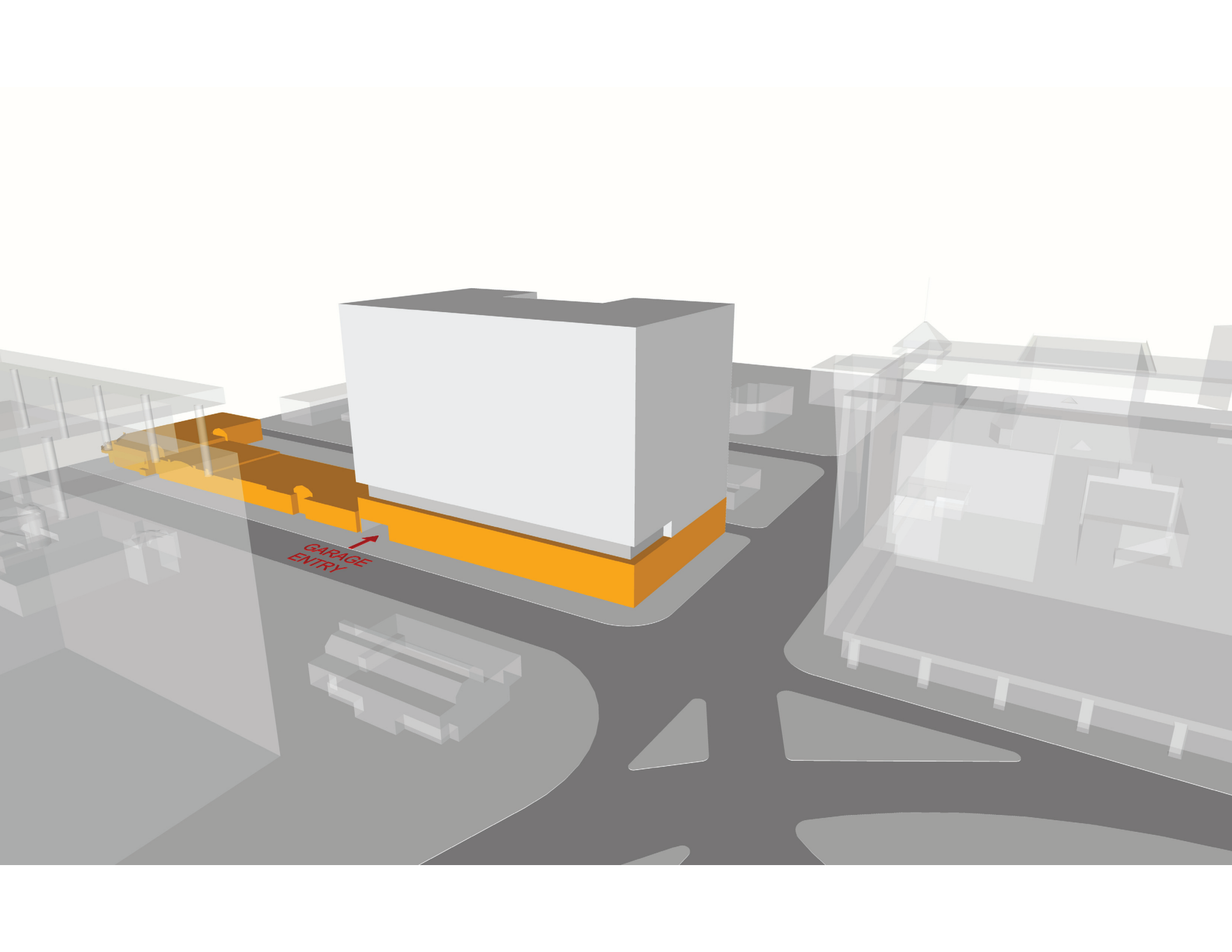
↑
150' HT LIMIT



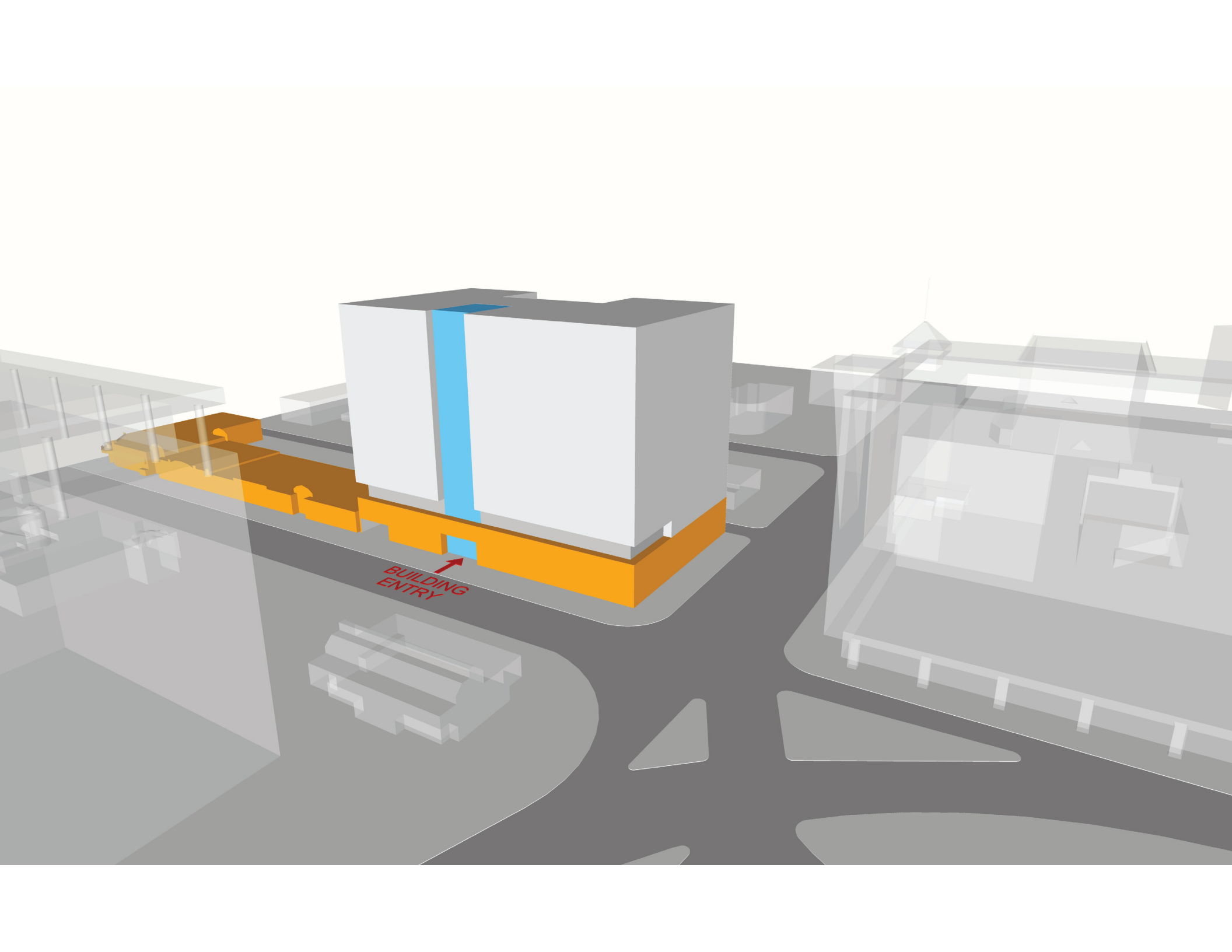
144' VIEW PLANE

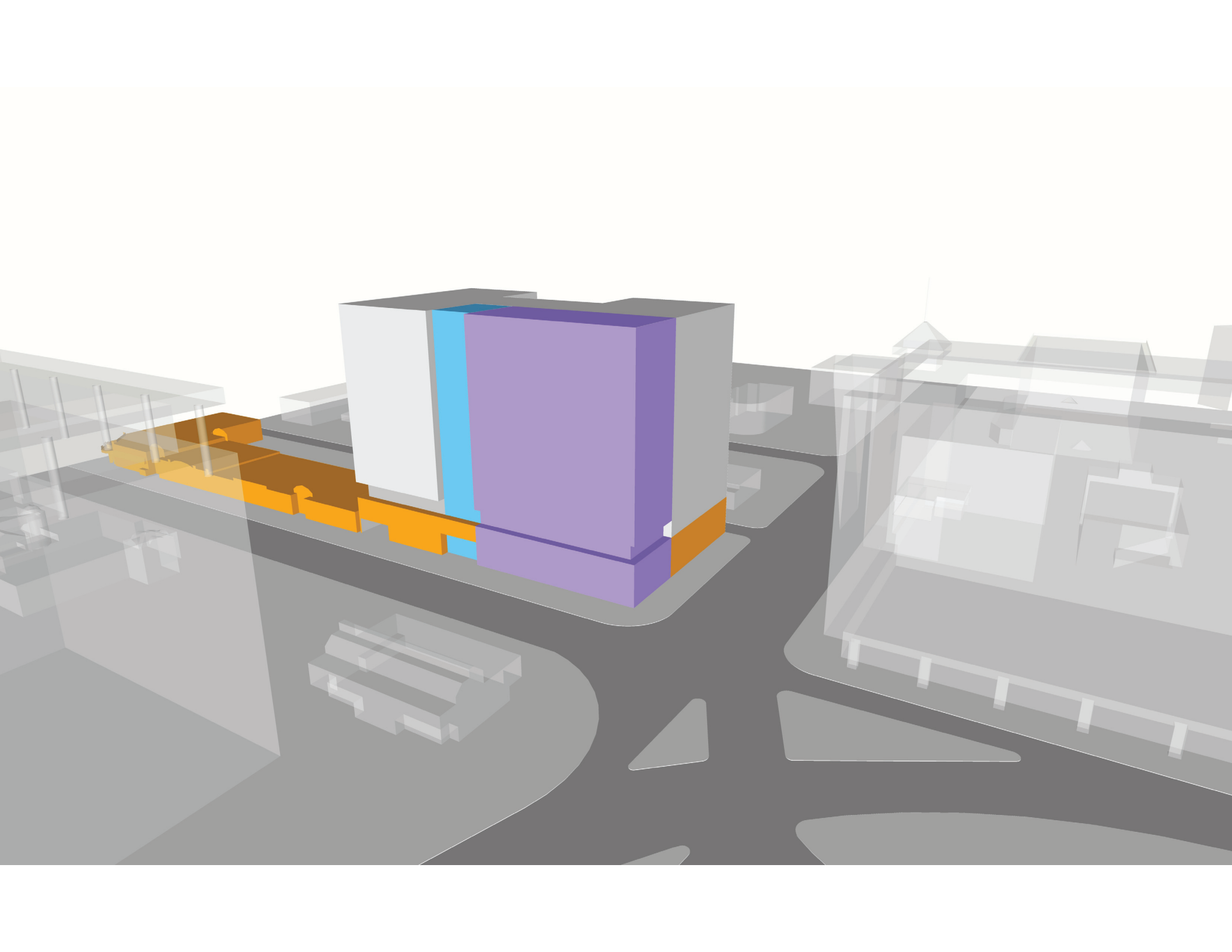


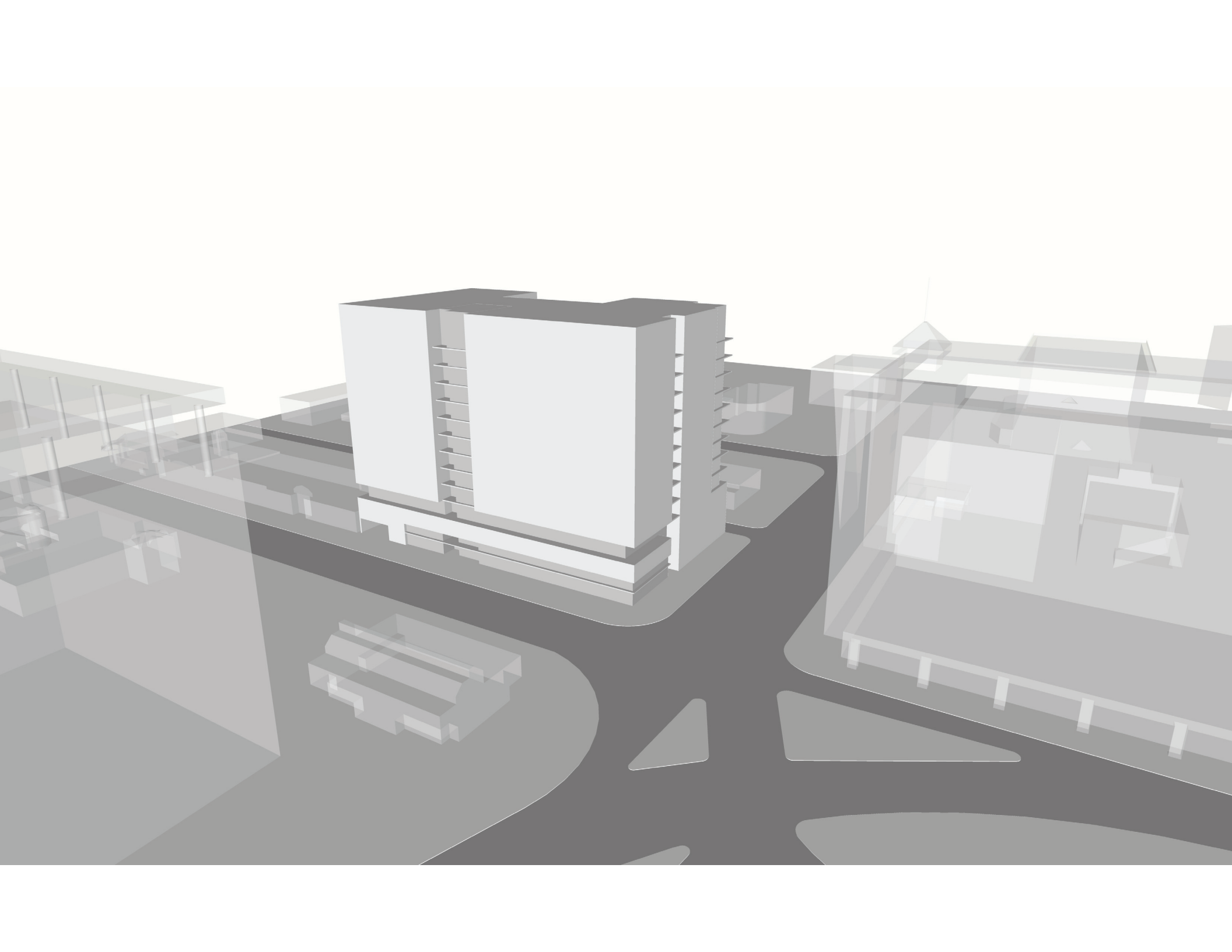




GARAGE
ENTRY













THE UNIVERSITY OF
MICHIGAN
SCHOOL OF ENGINEERING

1000 ENGINEERING CENTER

ANN ARBOR, MI 48106-1329

TEL: 734 763 2345

FAX: 734 763 2346

WWW: WWW.ENR.U-MICH.EDU

WWW: WWW.ENR.U-MICH.EDU

WWW: WWW.ENR.U-MICH.EDU

WWW: WWW.ENR.U-MICH.EDU

WWW: WWW.ENR.U-MICH.EDU

WWW: WWW.ENR.U-MICH.EDU

WWW: WWW.ENR.U-MICH.EDU

WWW: WWW.ENR.U-MICH.EDU

WWW: WWW.ENR.U-MICH.EDU

WWW: WWW.ENR.U-MICH.EDU

WWW: WWW.ENR.U-MICH.EDU

WWW: WWW.ENR.U-MICH.EDU

WWW: WWW.ENR.U-MICH.EDU

WWW: WWW.ENR.U-MICH.EDU

WWW: WWW.ENR.U-MICH.EDU

WWW: WWW.ENR.U-MICH.EDU

WWW: WWW.ENR.U-MICH.EDU

WWW: WWW.ENR.U-MICH.EDU

WWW: WWW.ENR.U-MICH.EDU

WWW: WWW.ENR.U-MICH.EDU

WWW: WWW.ENR.U-MICH.EDU

WWW: WWW.ENR.U-MICH.EDU

WWW: WWW.ENR.U-MICH.EDU

WWW: WWW.ENR.U-MICH.EDU

WWW: WWW.ENR.U-MICH.EDU

WWW: WWW.ENR.U-MICH.EDU

WWW: WWW.ENR.U-MICH.EDU

WWW: WWW.ENR.U-MICH.EDU

WWW: WWW.ENR.U-MICH.EDU

WWW: WWW.ENR.U-MICH.EDU

WWW: WWW.ENR.U-MICH.EDU

WWW: WWW.ENR.U-MICH.EDU

WWW: WWW.ENR.U-MICH.EDU

WWW: WWW.ENR.U-MICH.EDU

WWW: WWW.ENR.U-MICH.EDU

WWW: WWW.ENR.U-MICH.EDU

WWW: WWW.ENR.U-MICH.EDU

WWW: WWW.ENR.U-MICH.EDU

WWW: WWW.ENR.U-MICH.EDU

WWW: WWW.ENR.U-MICH.EDU

WWW: WWW.ENR.U-MICH.EDU

WWW: WWW.ENR.U-MICH.EDU

WWW: WWW.ENR.U-MICH.EDU

WWW: WWW.ENR.U-MICH.EDU

WWW: WWW.ENR.U-MICH.EDU

