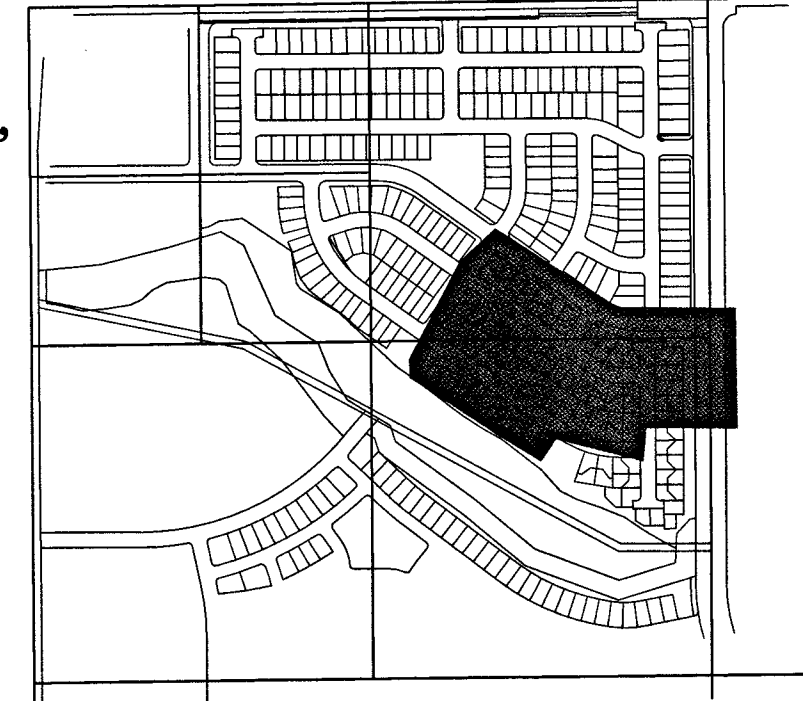
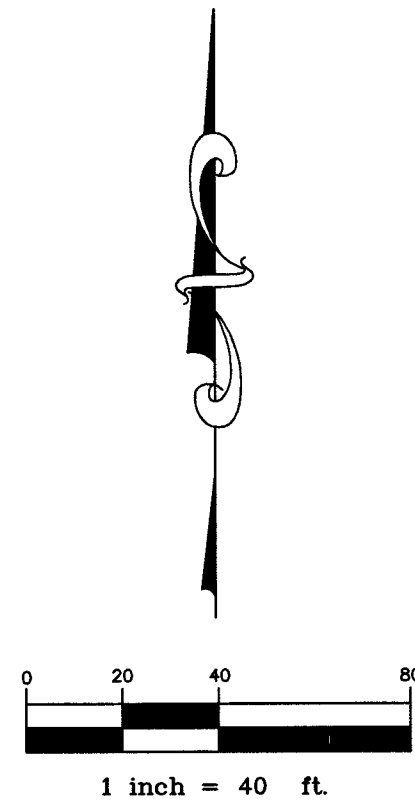


GREEN VALLEY RANCH FILING NO. 62

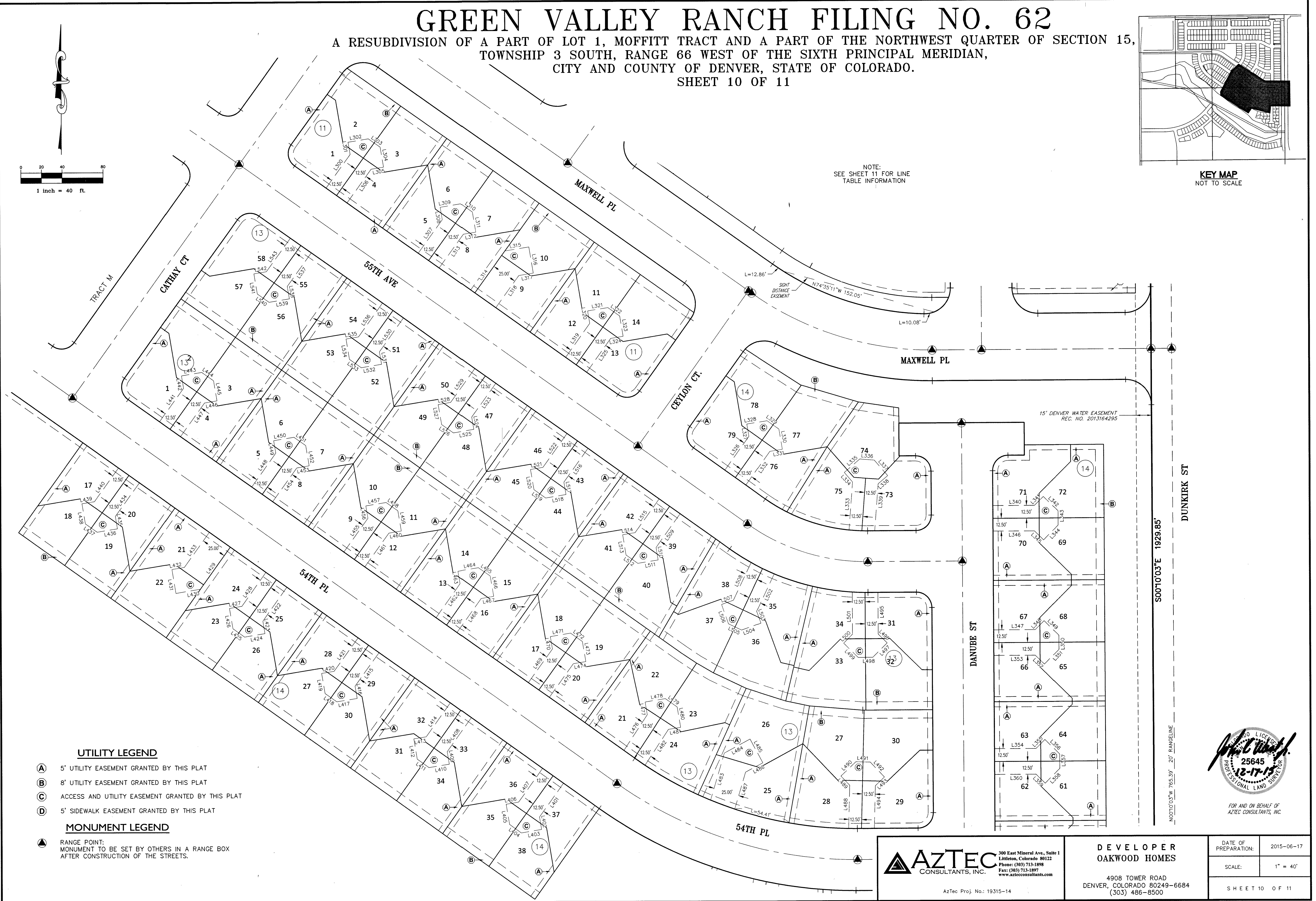
A RESUBDIVISION OF A PART OF LOT 1, MOFFITT TRACT AND A PART OF THE NORTHWEST QUARTER OF SECTION 15,
TOWNSHIP 3 SOUTH, RANGE 66 WEST OF THE SIXTH PRINCIPAL MERIDIAN,
CITY AND COUNTY OF DENVER, STATE OF COLORADO.
SHEET 10 OF 11



KEY MAP
NOT TO SCALE



NOTE:
SEE SHEET 11 FOR LINE
TABLE INFORMATION



UTILITY LEGEND

- (A) 5' UTILITY EASEMENT GRANTED BY THIS PLAT
- (B) 8' UTILITY EASEMENT GRANTED BY THIS PLAT
- (C) ACCESS AND UTILITY EASEMENT GRANTED BY THIS PLAT
- (D) 5' SIDEWALK EASEMENT GRANTED BY THIS PLAT

MONUMENT LEGEND

- (▲) RANGE POINT:
MONUMENT TO BE SET BY OTHERS IN A RANGE BOX
AFTER CONSTRUCTION OF THE STREETS.

AZTEC
CONSULTANTS, INC.
300 East Mineral Ave., Suite 1
Littleton, Colorado 80122
Phone: (303) 713-1898
Fax: (303) 713-1897
www.aztecconsultants.com

AzTec Proj. No.: 19315-14

DEVELOPER
OAKWOOD HOMES

4908 TOWER ROAD
DENVER, COLORADO 80249-6684
(303) 486-8500

DATE OF PREPARATION: 2015-06-17

SCALE: 1" = 40'

SHEET 10 OF 11



FOR AND ON BEHALF OF
AZTEC CONSULTANTS, INC.