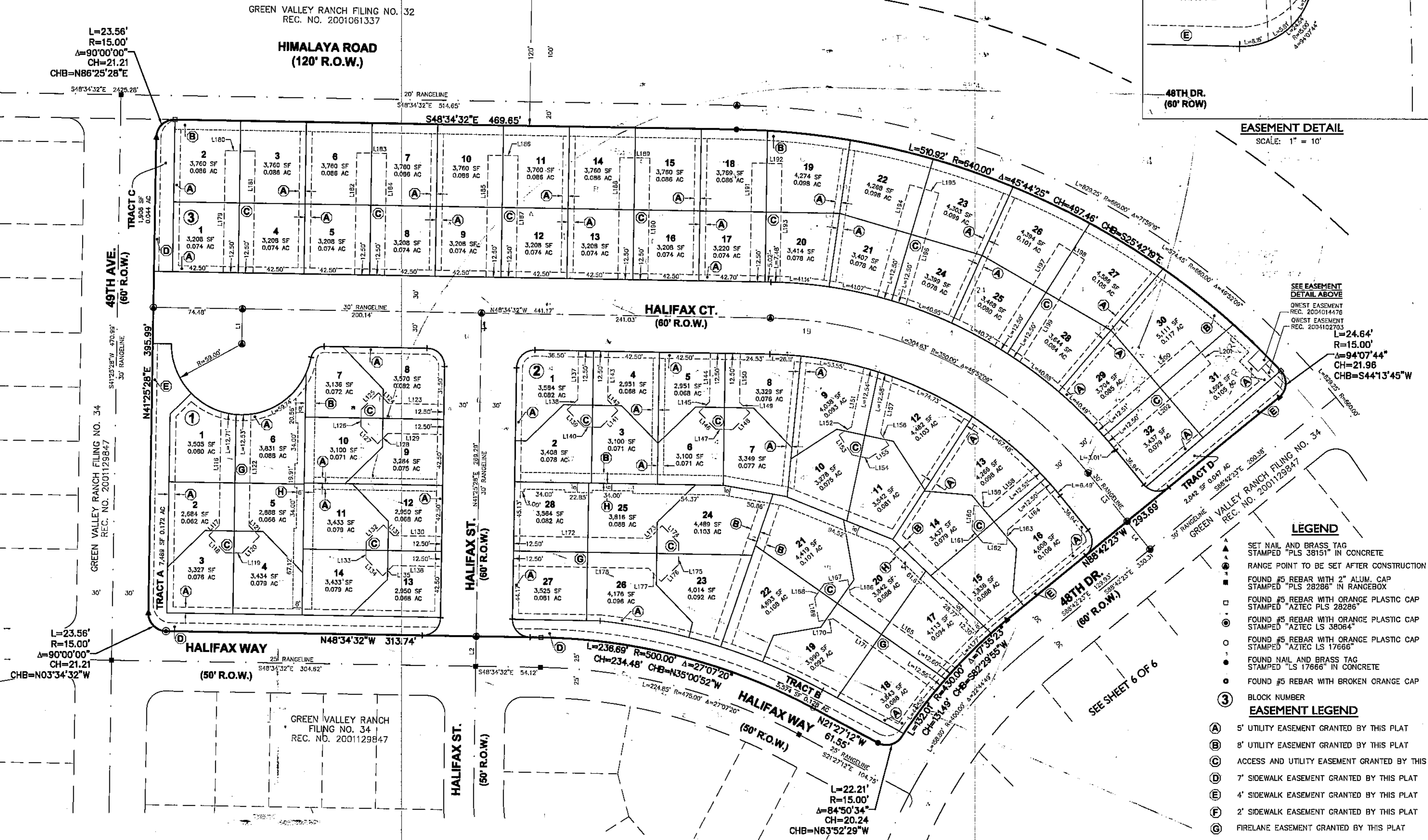
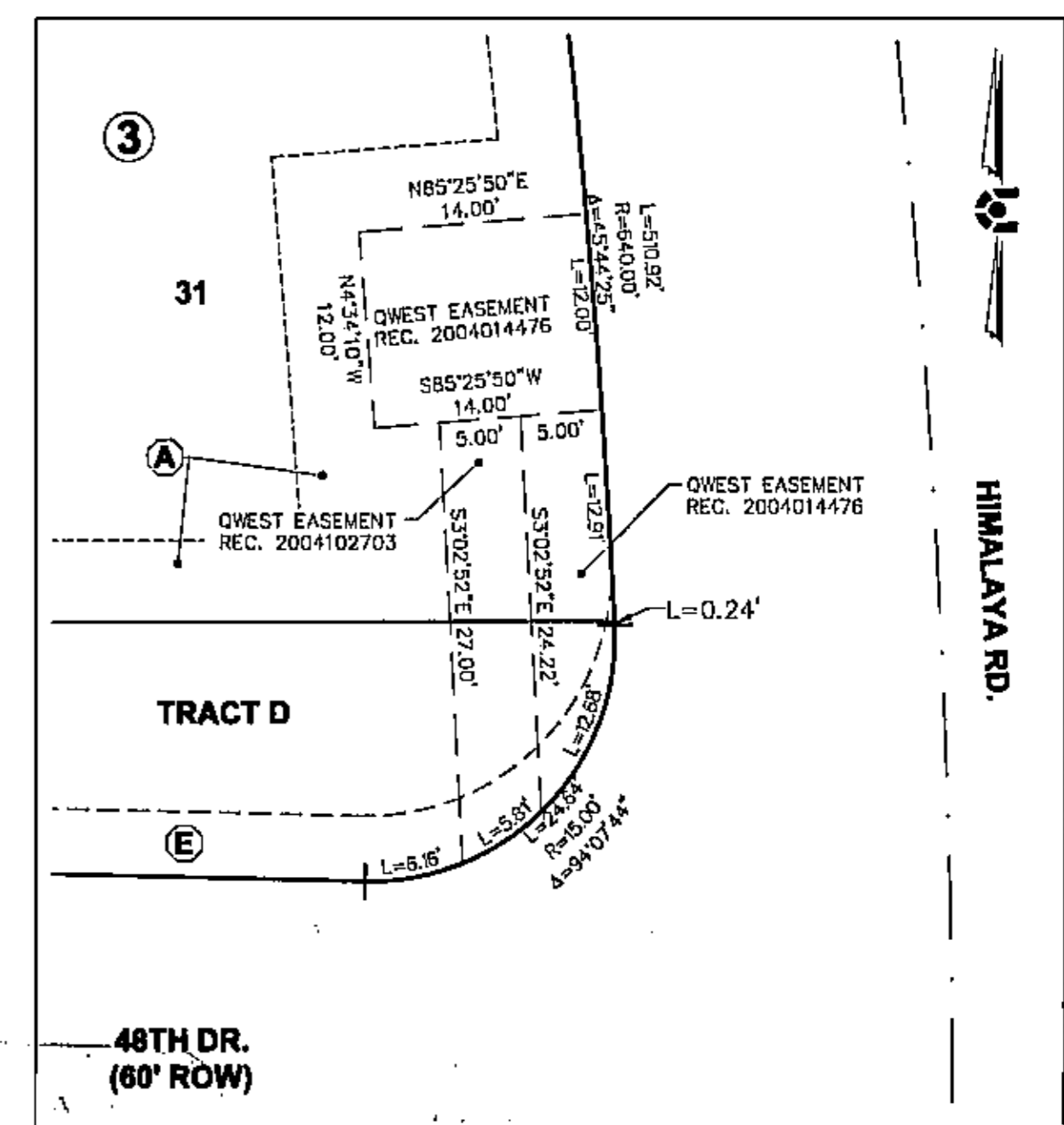
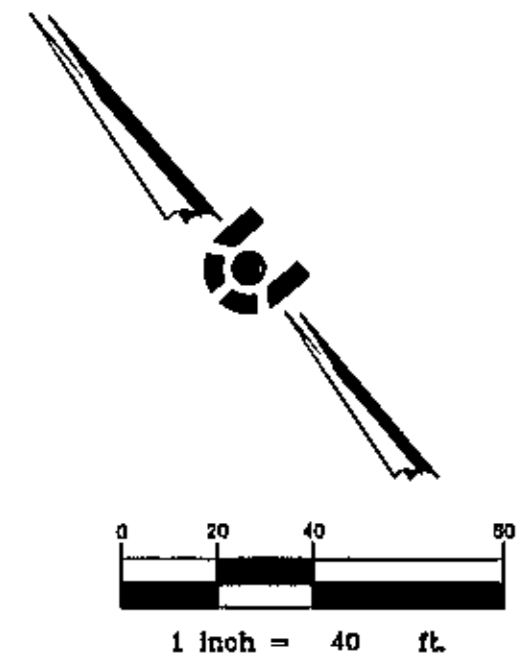


# GREEN VALLEY RANCH FILING NO. 70

A PART OF THE SOUTHEAST QUARTER OF SECTION 15 AND THE NORTHEAST QUARTER OF SECTION 22,  
TOWNSHIP 3 SOUTH, RANGE 66 WEST OF THE SIXTH PRINCIPAL MERIDIAN,  
CITY AND COUNTY OF DENVER, STATE OF COLORADO



**EASEMENT DETAIL**  
SCALE: 1" = 10'

SEE EASEMENT  
DETAIL ABOVE  
WEST EASEMENT  
REC. 2004014476  
WEST EASEMENT  
REC. 2004102703

L=24.64'  
R=15.00'  
A=94°07'44"  
CH=21.96  
CHB=S44°13'45"W

**LEGEND**

- SET NAIL AND BRASS TAG STAMPED "PLS 38151" IN CONCRETE
  - RANGE POINT TO BE SET AFTER CONSTRUCTION
  - FOUND #5 REBAR WITH 2" ALUM. CAP STAMPED "PLS 28286" IN RANGEBOX
  - FOUND #5 REBAR WITH ORANGE PLASTIC CAP STAMPED "AZTEC PLS 28286"
  - FOUND #5 REBAR WITH ORANGE PLASTIC CAP STAMPED "AZTEC LS 38054"
  - FOUND #5 REBAR WITH ORANGE PLASTIC CAP STAMPED "AZTEC LS 17666"
  - FOUND NAIL AND BRASS TAG STAMPED "LS 17666" IN CONCRETE
  - FOUND #5 REBAR WITH BROKEN ORANGE CAP
  - ③ BLOCK NUMBER
- EASEMENT LEGEND**
- (A) 5' UTILITY EASEMENT GRANTED BY THIS PLAT
  - (B) 8' UTILITY EASEMENT GRANTED BY THIS PLAT
  - (C) ACCESS AND UTILITY EASEMENT GRANTED BY THIS PLAT
  - (D) 7' SIDEWALK EASEMENT GRANTED BY THIS PLAT
  - (E) 4' SIDEWALK EASEMENT GRANTED BY THIS PLAT
  - (F) 2' SIDEWALK EASEMENT GRANTED BY THIS PLAT
  - (G) FIRELANE EASEMENT GRANTED BY THIS PLAT
  - (H) 6'-8' VARIABLE WIDTH UTILITY EASEMENT GRANTED BY THIS PLAT

CIVIL ENGINEERING  
SURVEYING  
LAND SURVEYING  
303.703.4444  
1850 W. Johnson Blvd., Ste. 109  
Limon, CO 80525

**CORE CONSULTANTS**

| NO. | DESCRIPTION | DATE | BY |
|-----|-------------|------|----|
|     |             |      |    |
|     |             |      |    |
|     |             |      |    |

GREEN VALLEY RANCH FILING NO. 70

INITIAL PLAN  
RELEASED 3/30/15  
DESIGNED BY: JF  
DRAWN BY: JCA  
CHECKED BY: TNG

JOB NO.  
14-040

SHEET  
5 OF 6

GREEN VALLEY RANCH FILING NO. 70