



LAND USE, TRANSPORTATION AND INFRASTRUCTURE COMMITTEE (LUTI)

OCTOBER 17, 2017

IMAGINE. DISCOVER. CULTIVATE.



AGENDA

1. PHASE I & II MAP (MASTER PLAN)
2. WORKPLAN HIGHLIGHTS
3. LAND ACQUISITION UPDATE
4. PROGRAM UPDATE
5. CAMPUS ENERGY PARTNER

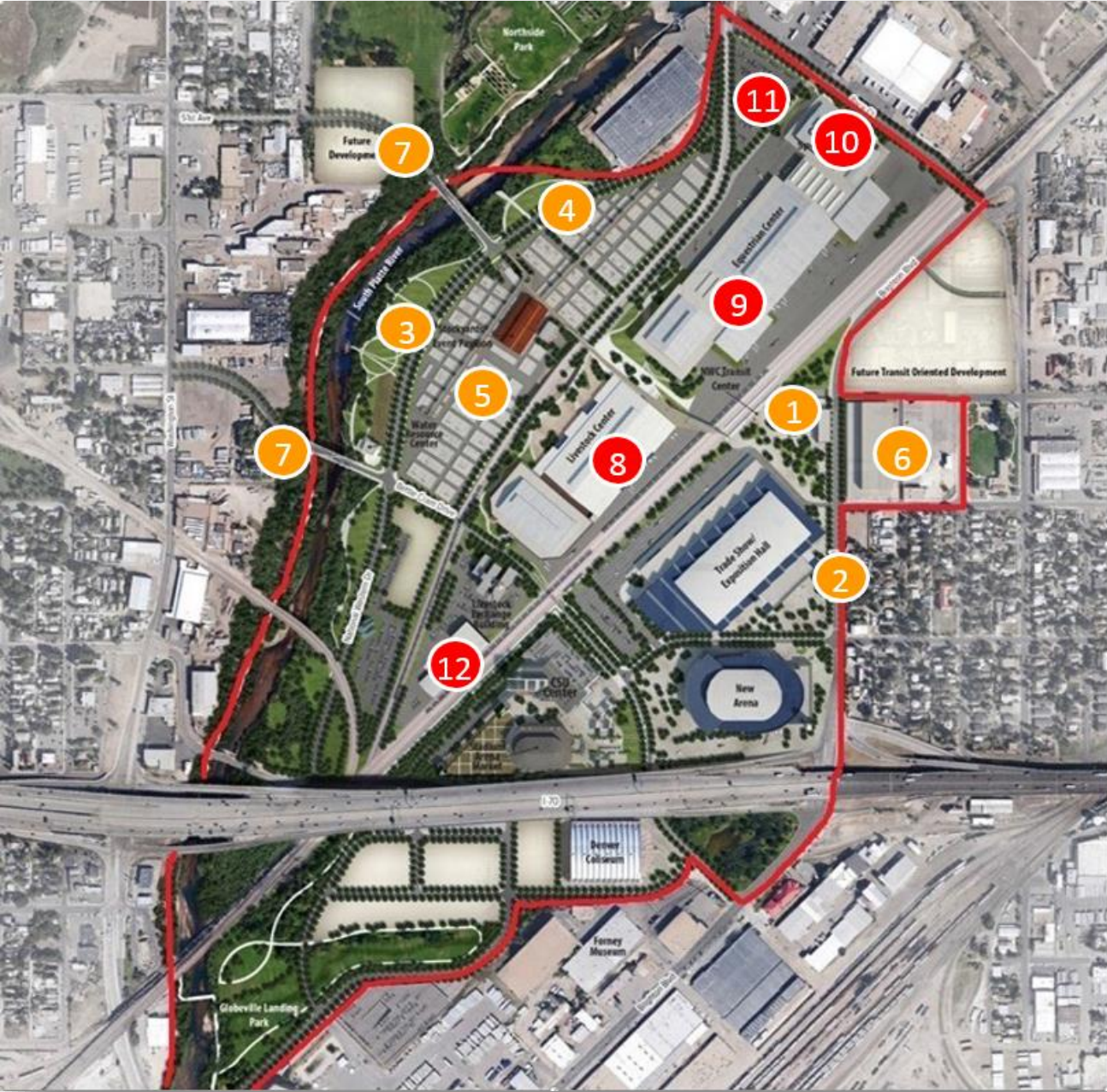
MASTER PLAN PHASE I & II

PHASE I

- 1 NWC TRANSIT STATION
- 2 BRIGHTON BLVD
- 3 SOUTH PLATTE RIVERFRONT
- 4 NEW NATIONAL WESTERN DRIVE
- 5 STOCK YARDS AND STOCK YARDS EVENT CENTER
- 6 MIXED-USE TRANSIT-ORIENTED DEVELOPMENT W/PARKING
- 7 NEW BRIDGES AT 49TH & 51ST STREETS

PHASE II

- 8 LIVESTOCK CENTER
- 9 EQUESTRIAN CENTER
- 10 CSU EQUINE FACILITY
- 11 CSU WATER RESOURCE CENTER
- 12 MAINTENANCE FACILITY



WORK PLAN HIGHLIGHTS



- Continued land acquisition and contract management to fulfill campus vision
- Continued discussion on rail consolidation
- Delivery of Program Baseline scope, schedule and budget in 2017
- Develop program controls and reporting
- Develop program strategy, timeline and partnerships on workforce
- Build relationships with campus sustainability partners
- Deliver NextGEN Agribusiness 2.0 market strategy
- NWC Framework Agreement next steps:
 - NWC Authority Board formation 2018
 - National search for Authority President/CEO



LAND ACQUISITION UPDATE

DENVER'S APPROVED LAND ACQUISITION ORDINANCE INCLUDES

62 PARCELS WITHIN THE CAMPUS

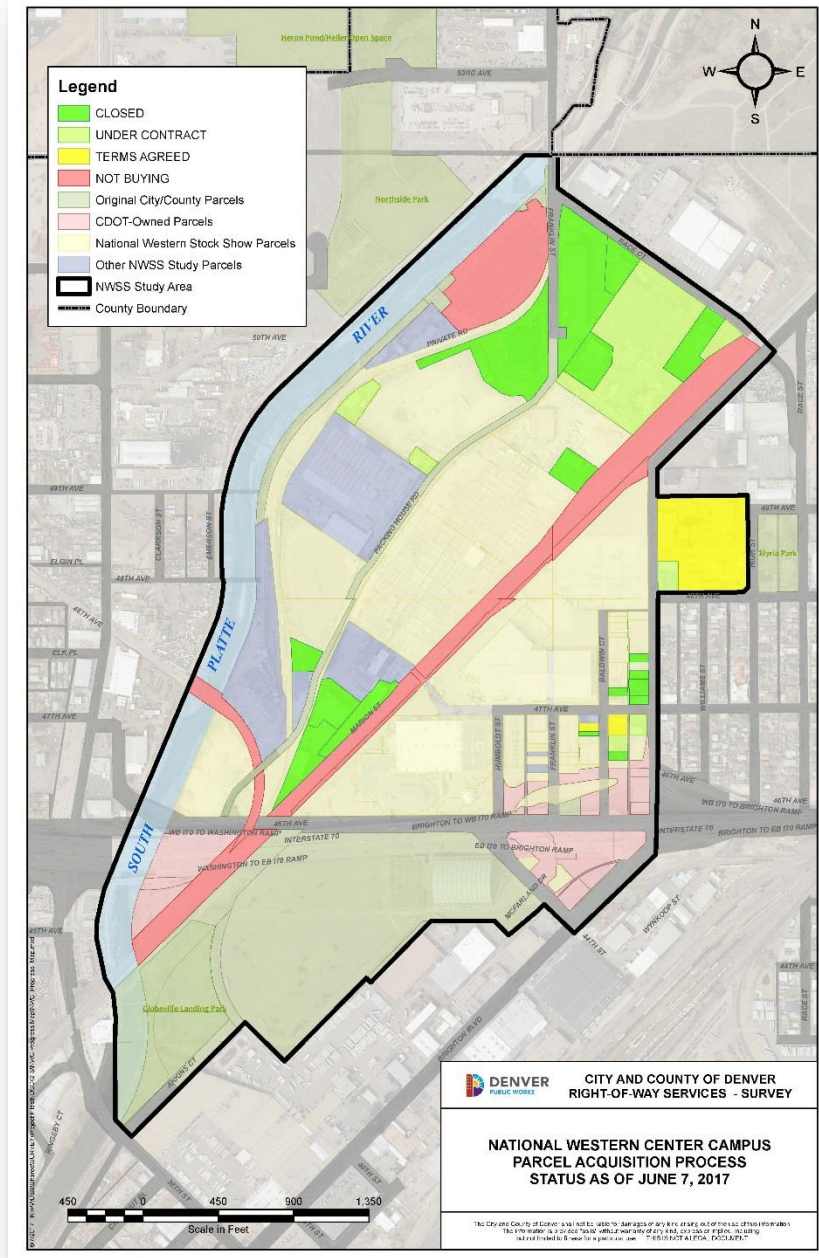
24 CDOT Parcels



38 Private Parcels

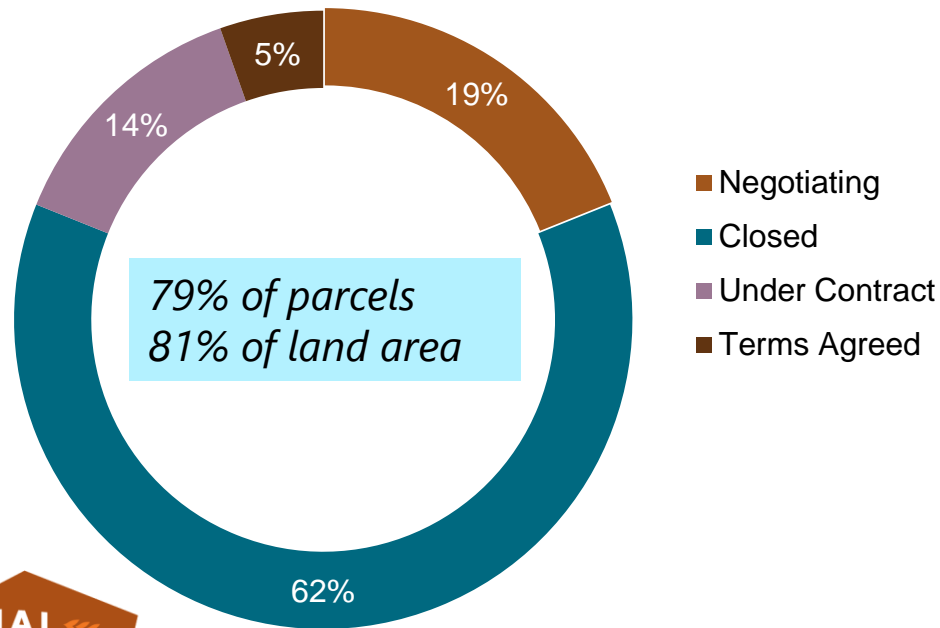


- 26 Commercial
- 10 Residential
- 1 State Dept. Of Agriculture
- 1 DPS (Bus Barn)



LAND ACQUISITION UPDATE

Third Party Number Of Parcels Under Control (Excludes CDOT Land)



DATE	NUMBER OF PRIVATE PARCELS (38 TOTAL) UNDER CONTROL
Dec 2015	3
Mar 2016	8
Jun 2016	12
Sep 2016	15
Dec 2016	17
Mar 2017	23
Jun 2017	29
Sep 2017	30

PROGRAM UPDATE

CAMPUS PLACEMAKING

MIG

M/WBE Goal of 24%
24-36 month contract term



Project Management

Community Engagement

Built Form, Campus Character And Campus Cultural Plans

Market Analysis

Program Refinement

Public Realm Study

Design Standards And Guidelines

Design Review Implementation Strategy

15% And 30% Infrastructure Design

PROGRAM UPDATE

INTEGRATED DEMOLITION

SAUNDERS CONSTRUCTION

M/WBE Goal of 18%
36 month contract term



Interim Property Management Services

Community Communications

Small Business Outreach/Inclusion

Cost Estimating

Project Scheduling/Planning Permitting

Facility Abatement

Facility Demolition

Minor Soil Remediation

Leave Behind Plan Implementation

4th QUARTER 2017 PROCUREMENTS

ANTICIPATED TRADES:

Site Clearance

Paving

Utilities

Landscape

Traffic Signals

Bridge Construction

Striping



*This List Is Not All Inclusive Of The Work To Be Performed



BRIGHTON BOULEVARD

47TH AVENUE TO RACE COURT

Widening of Brighton Blvd. to add a two-way left turn lane and a flex/parking lane. Addition of a two-way cycle track, sidewalks and amenity zones. Replacement of Brighton Blvd. Bridge over Race Street as well as concrete paving, traffic signals and lighting work.

Key Construction Procurement Information

Anticipated Advertisement Date: Mid to Late October 2017

Contract Type: Work Order; Brighton Blvd. Integrated Contract

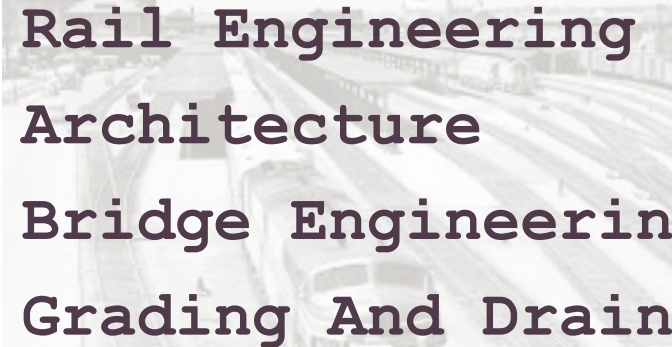
Anticipated Project Budget: \$10m- \$13m

M/WBE: Pending Goals Committee

Anticipated Construction Start: February 2018

4th QUARTER 2017 PROCUREMENTS

ANTICIPATED TRADES:



Rail Engineering
Architecture
Bridge Engineering
Grading And Drainage

*This List Is Not All Inclusive Of The Work To Be Performed

DRIR RAIL CONSOLIDATION AND MAINTENANCE FACILITY

Professional Design Services for the Consolidation of the Denver Rock Island Rail Road (DRIR) through the NWC Campus and Design for the Replacement Maintenance Facility to enable the Capital Build.

Key Construction Procurement Information

Anticipated Advertisement Date: Early October 2017

Contract Type: Not to Exceed

Anticipated Project Budget: \$3m-\$3.5m

M/WBE: 14%

Anticipated Design Start: February 2018

Anticipated Construction Start: October 2018



4th QUARTER 2017 PROCUREMENTS

ANTICIPATED TRADES:

Civil, Structural, Geotechnical Design

Utilities Design

Landscape Design

Design Coordination And Integration

Traffic Engineering

Hydrology And Hydraulics Design

Environmental Design

Railroad Coordination And Permitting

Geotechnical & Environmental

Investigations

Preconstruction/Construction Support

Services

*This List Is Not All Inclusive Of The Work To Be Performed



HORIZONTAL PORTFOLIO DESIGNER

Task Order Based Professional Design Services to enable the Horizontal Portfolio for the Campus Development. Major scope elements are anticipated to include: Enabling Works, Riverfront Open Space, Site Wide Infrastructure, DPS Remediation, Site Investigations & Survey, Race Court, National Western Drive and Bettie Cram Drive.

Anticipated Advertisement Date: Mid October 2017

Contract Type: On-Call; Task Order Based

Anticipated Contract Capacity: \$ 25m

M/WBE: 19%

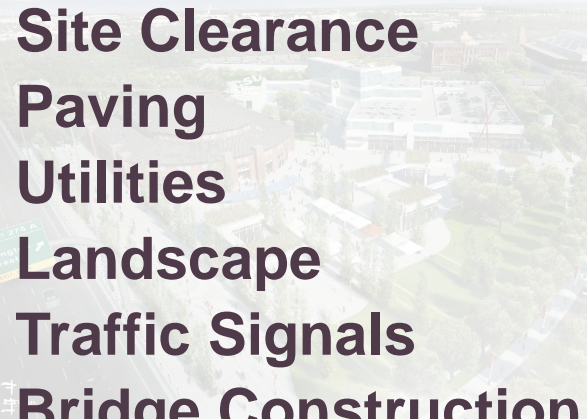
Anticipated Contract Duration: 3 to 5 Years

Anticipated Design Start: March 2018

IMAGINE. DISCOVER. CULTIVATE.

4th QUARTER 2017 PROCUREMENTS

ANTICIPATED TRADES:



Site Clearance
Paving
Utilities
Landscape
Traffic Signals
Bridge Construction
Striping

*This List Is Not All Inclusive Of The Work To Be Performed

HORIZONTAL PORTFOLIO INTEGRATED CONSTRUCTION CONTRACT

Work Order Based Integrated Construction Contract to enable the Horizontal Portfolio. Major scope elements are anticipated to include: Enabling Works, Riverfront Open Space, Site Wide Infrastructure, DPS Remediation, Site Investigations & Survey, Race Court, National Western Drive, Bettie Cram Drive and DRIR Rail Consolidation.

Key Construction Procurement Information

Anticipated Advertisement Date: Q4 2017

Contract Type: Integrated Work Order Based;
Task Order Based

Anticipated Contract Capacity: \$200m-\$250m

M/WBE: Pending Goals Committee

Anticipated Contract Start: Q2 2018



DUE DILIGENCE: MEETING NWC ENERGY GOALS

- NWC Master Plan envisions a “Net Zero Energy District”
- Findings to date (Xcel Energy, NREL, MWRD): technically feasible
- NWC Capital Build Program: due diligence toward meeting this goal
- Next step: Test the market for interest
- Sun Valley Ecodistrict: similar approach – positive response
- NWC Authority has responsibility for long term energy approach

• Short window of opportunity to inform campus design

• NWC will issue Request for Information (RFI) – Fall 2017

• Hand findings to Authority in Q1 2018 to inform next



QUESTIONS?

