



DENVER
THE MILE HIGH CITY

Cableland

4150 East Shangri La Drive

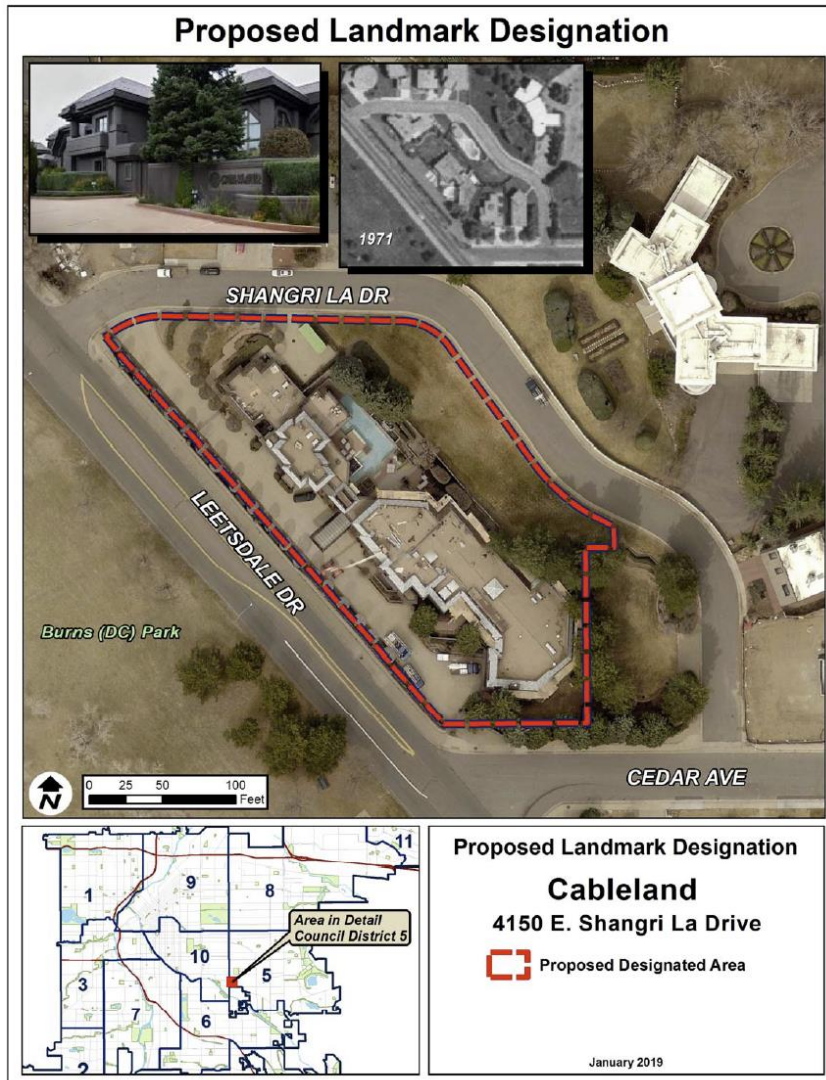
Landmark Designation Application

Denver City Council
April 29, 2019

Designation Applications



- Community-driven process
 - **Owner(s) of the property**
 - Manager of Community Planning and Development
 - Member(s) of City Council
 - Three people who are
 - Residents
 - Property owners
 - Have a place of business in Denver



- Owners
 - City and County of Denver
 - Managed by Cableland Foundation
- General Location
 - Hilltop Neighborhood
 - Near Burns Park
- Council District
 - #5, Mary Beth Susman
- Blueprint Denver
 - Low intensity residential
- Current Zoning
 - E-SU-D

Aligns With City Plans



- Comprehensive Plan
 - Vision for strong and authentic neighborhoods
 - Goal to preserve Denver’s authenticity and celebrate the city’s history, architecture, and culture
- Blueprint Denver
 - Recommends designation to preserve the character of significant structures or districts

Property Required to*:

1. Meet a designation criterion in at least 2 of the following categories
 - History
 - Architecture
 - Geography
2. Maintain historic and physical integrity
3. Consider how relates to a historic context or theme

*Per Landmark Preservation Ordinance (Chapter 30, DRMC)



1. History:

- a. Have direct association with the historical development of the city, state or nation;
- b. Be the site of a significant historic event; or
- c. **Have direct & substantial association with a person or group of persons who had influence on society.**

2. Architecture:

- a. **Embody distinguishing characteristics of an architectural style or type;**
- b. Be the significant work of a recognized architect or master builder;
- c. Contain elements of architectural design...which represent a significant innovation
- d. Portray the environment of a group of people or physical development of an area in an era of history characterized by a distinctive architectural style.

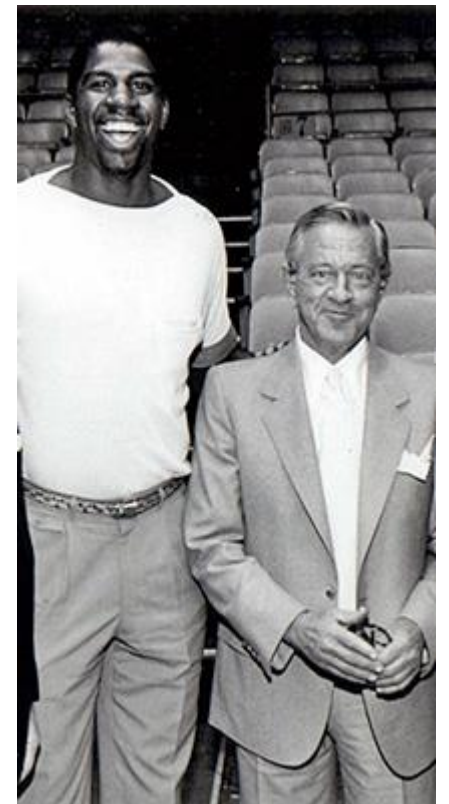
3. Geography:

- a. Have a prominent location or be an established, familiar and orienting visual feature of the contemporary city;
- b. Promote understanding and appreciation of the urban environment by means of distinctive physical characteristics or rarity;
- c. Make a special contribution to Denver's distinctive character.

History – 30 years old, and shall:

C. Have direct and substantial association with a person or group of persons who had influence on society

- Bill Daniels
 - Early influences
 - Great Depression
 - Military school
 - Early professions
 - Navy pilot
 - Oil and Gas Insurance



History – 30 years old, and shall:

C. Have direct and substantial association with a person or group of persons who had influence on society

- Bill Daniels - Cable TV Industry
 - Early innovator
 - Microwave technology
 - Casper, Rawlins, Farmington
 - Leader in Cable
 - National Community Television Association
 - Financial broker
 - Cable programming
 - Daniels and Associates
 - Broadcasting Hall of Fame and Emmy



History – 30 years old, and shall:

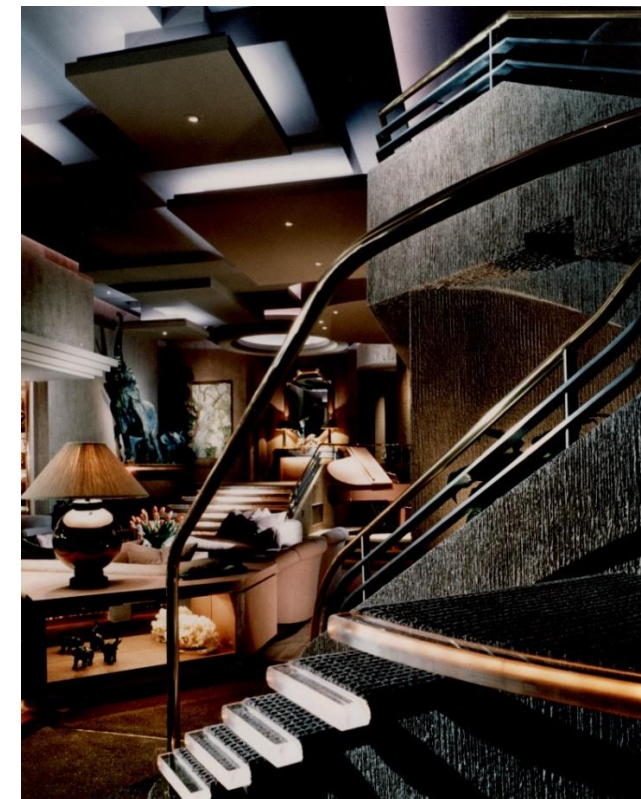
C. Have direct and substantial association with a person or group of persons who had influence on society

- Bill Daniels
 - Philanthropist
 - Cableland Foundation
 - Fundraisers at Cableland



Architecture – design quality and integrity, and:

A. Embody distinguishing characteristics of an architectural style or type



Built 1986-1987

Significant as an exceptional example of residential Postmodern architecture in Denver
Lawrence Pepper (architect), Andrew Gerhard (interior designer)

Landmark Designation Criteria





Key Postmodern Exterior Features:

- plays with scale and proportion
- oversized, stylized versions of traditional building elements including
 - round columns
 - square posts
 - flattened arches
 - horizontal bands
 - corbelling
- strong geometric composition with repeated motifs



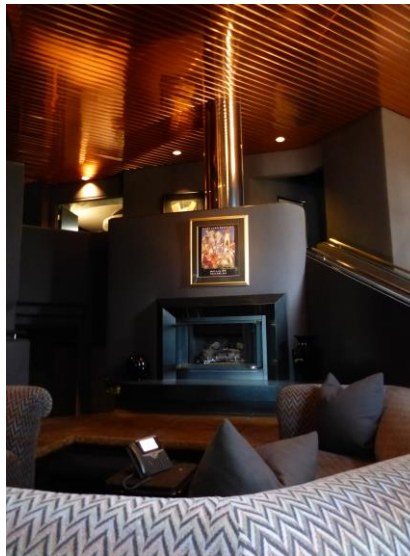


Brutalist influence

- textured concrete
- heavy feel
- deeply punched openings
- varied wall planes which create a play of light and shadow



Landmark Designation Criteria



Key Postmodern Interior Features:

- textured surfaces
- recessed lighting
- warm colors
- brass details
- irregularly shaped rooms with multiple levels
- geometric shapes
- over-scaled, stylized versions of traditional building elements
 - round columns and corbelling

Designated Postmodern Buildings



Vanna Venturi House
Philadelphia Register of Historic Places
Designated 2016



AT&T Building
New York City Landmark
Designated 2018



Portland Public Service Building
National Register of Historic Places
Designated 2011

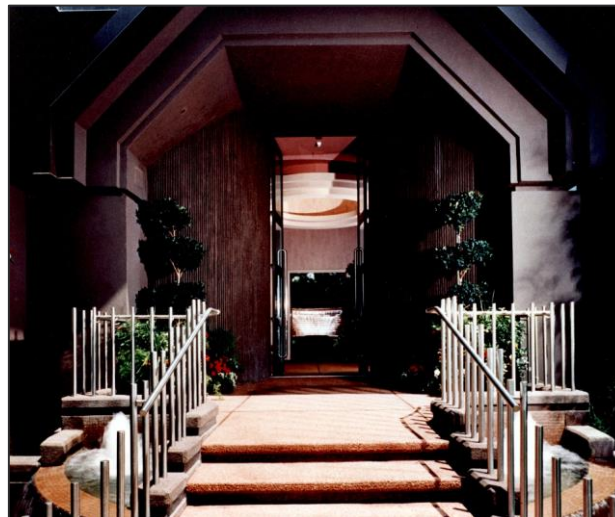


Ambassador Grill in the United Nations
Plaza Hotel
New York City Interior Landmark
Designated 2017



General American Life Insurance
Company National Headquarters
National Register of Historic Places
Designated 2008

- Ability to convey its historic and architectural significance
- Recognized as belonging to its particular time and place
- Retains integrity
 - Location
 - Design
 - Workmanship
 - Materials
 - Setting
 - Feeling
 - Association
- Minimal alterations
 - Change of primary entrance
 - Addition of canopy
 - Interior updates



LPC consider how a structure relates to historic contexts or themes

- Associated with development of cable television
 - Denver's central role in the industry
- Philanthropy in Denver
 - Foundation's strong role in Denver



- Meet one designation criterion in two or more categories
 - History
 - 1c. Have direct and substantial association with a person or group of persons who had influence on society
 - Architecture
 - 2a. Embody distinguishing characteristics of an architectural style or type
- Maintain historic and physical integrity
- Consider how structure relates to a historic context and theme

LPC Vote: 6-1-1

Recommend approval and forward to City Council based on History Criterion 1c and Architecture Criteria 2a