

Description: Scaffolding with Safety and Debris Netting on Shoemaker Plaza

Impact: Scaffolding would extend onto Shoemaker Plaza for 6 ft.

Duration: 20 months

Pros: Minimizes construction impact to Shoemaker Plaza

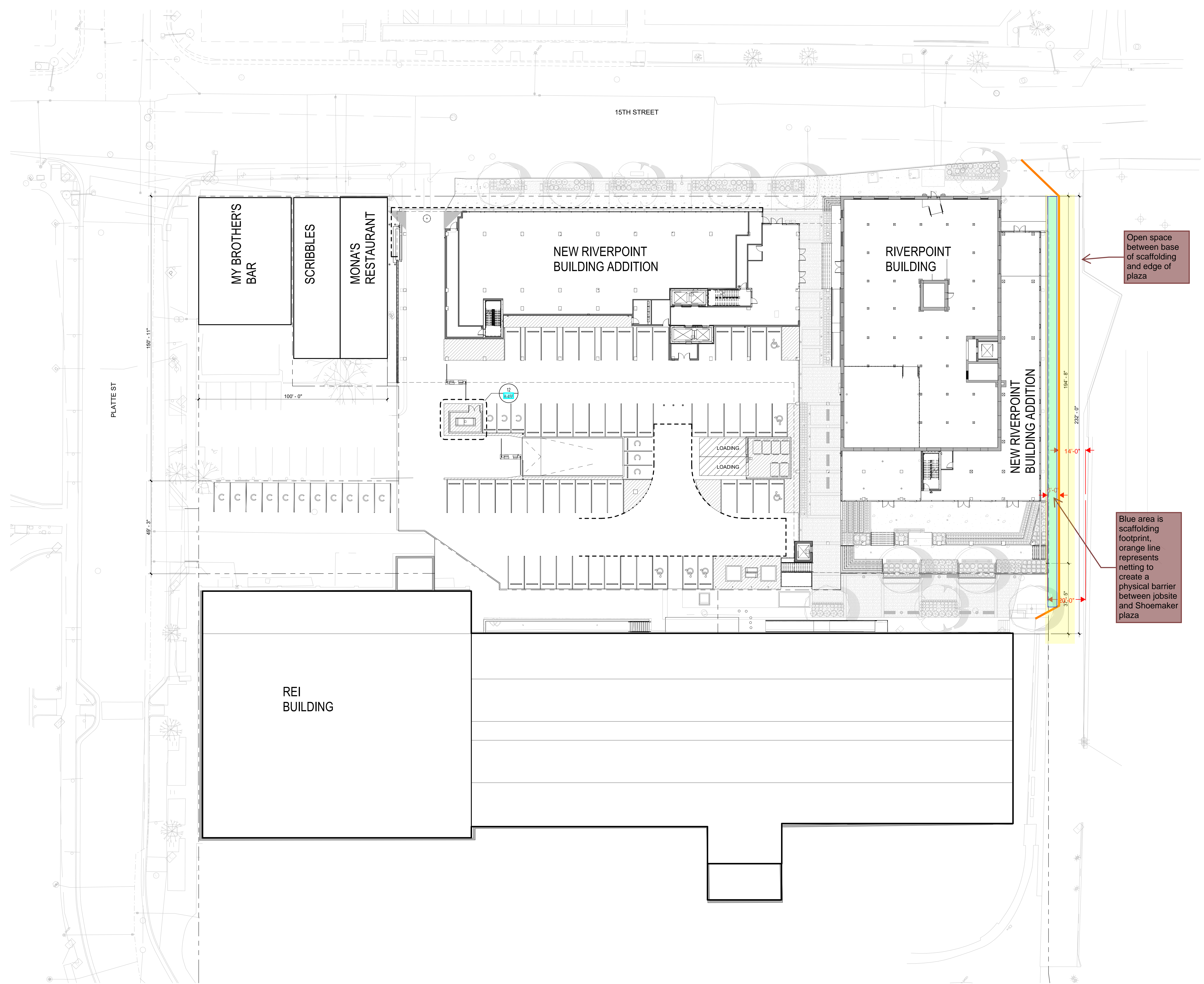
Cons: Pedestrian traffic would be walking within 6 feet of structure as it is getting erected.



3003 Larimer Street  
Denver, Colorado 80205  
phone 303.861.5704  
www.ozarch.com

NOT FOR CONSTRUCTION

**CONSTRUCTION**



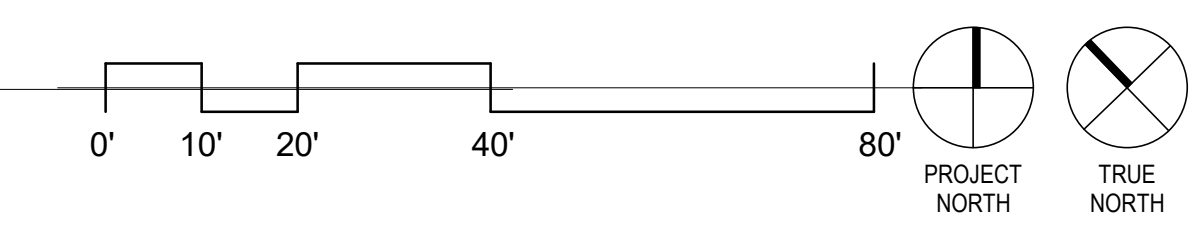
Open space between base of scaffolding and edge of plaza

Blue area is scaffolding footprint, orange line represents netting to create a physical barrier between jobsite and Shoemaker plaza

**EXHIBIT B**

**RIVERPOINT**  
2300 15TH STREET  
DENVER, CO, 80202

1 | PROPOSED SITE PLAN  
1" = 20'-0"



PROJ. NO. 115181.00  
DRAWN: OZ  
CHECKED: OZ  
APPROVED: OZ  
DATE: 2021.06.17

© OZ ARCHITECTURE

RIVERPOINT  
ISSUED FOR:  
100% DESIGN  
DEVELOPMENT  
SHEET TITLE:  
PROPOSED SITE PLAN

SCALE: 1" = 20'-0"  
SHEET NUMBER

**A-011**