

**EXHIBIT A
LEGAL DESCRIPTION
EASEMENT RELINQUISHMENT**

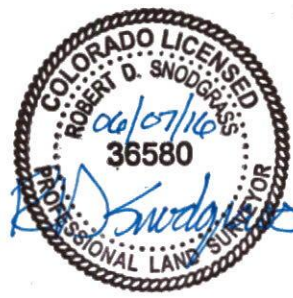
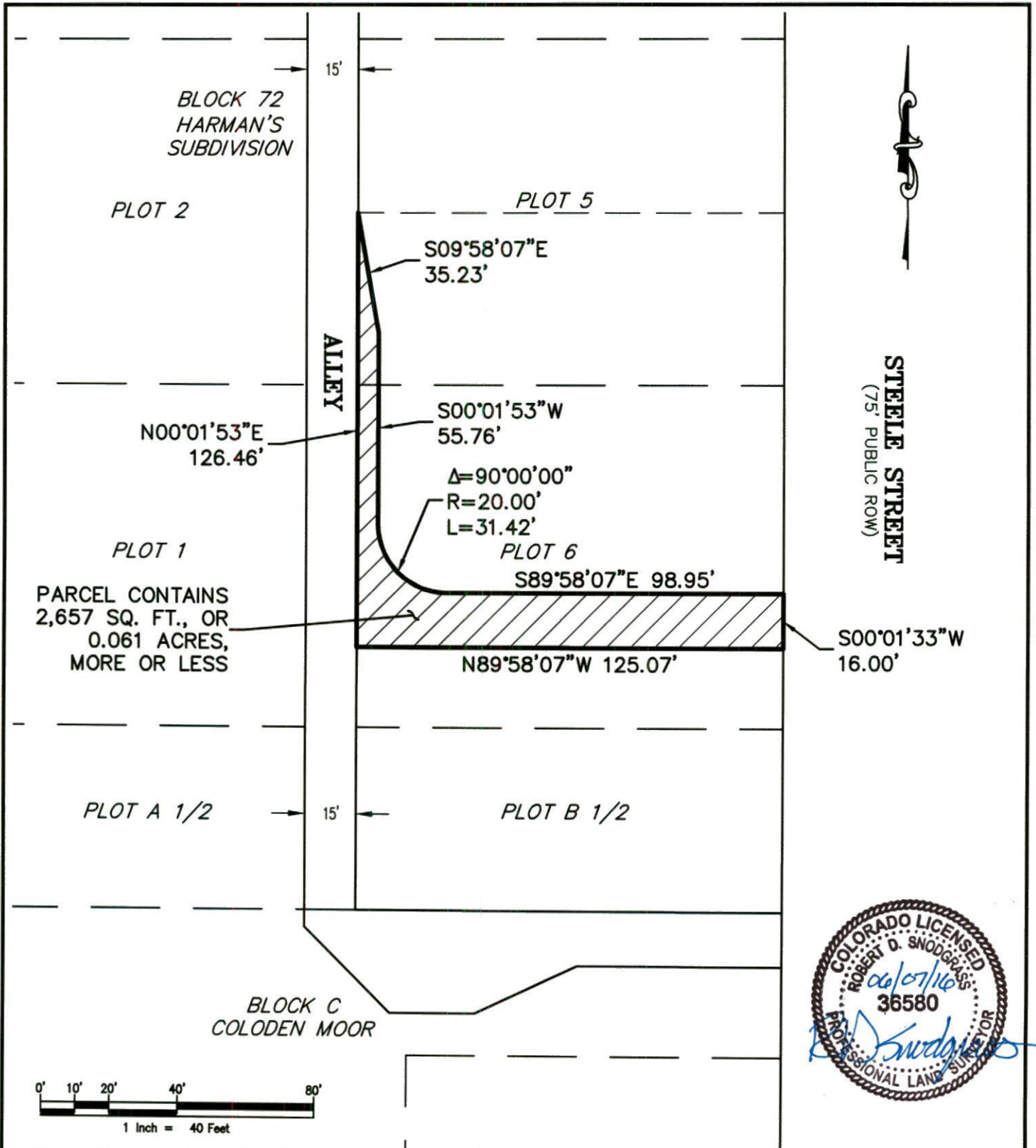
THAT CERTAIN EASEMENT FOR RIGHT-OF-WAY AREA AS DESCRIBED IN THE EASEMENT DEED BETWEEN FIRSTBANK OF CHERRY CREEK AND THE CITY AND COUNTY OF DENVER, RECORDED MAY 10, 2011 AT RECEPTION NO. 2011051715, IN THE OFFICE OF THE CLERK AND RECORDER OF THE CITY AND COUNTY OF DENVER, STATE OF COLORADO, LYING WITHIN THE NORTH ONE-HALF OF SECTION 12, TOWNSHIP 4 SOUTH, RANGE 68 WEST, 6TH PRINCIPAL MERIDIAN, IN SAID CITY, COUNTY AND STATE.

AS SHOWN ON THE ATTACHED ILLUSTRATION.



ROBERT D. SNODGRASS, PLS 36580
COLORADO LICENSED PROFESSIONAL LAND SURVEYOR
FOR AND ON BEHALF OF AZTEC CONSULTANTS, INC.
300 E. MINERAL AVENUE, SUITE 1
LITTLETON, CO 80122

EXHIBIT A ILLUSTRATION TO ACCOMPANY LEGAL DESCRIPTION



NOTE: THIS DRAWING DOES NOT REPRESENT A MONUMENTED LAND SURVEY AND IS ONLY INTENDED TO DEPICT THE ATTACHED LEGAL DESCRIPTION.

PATH: Q:\48115-22 - 149 Steele Street
 DWG NAME: ROW ESMT RELINQ EX
 DWG: RDS CHK: JRW
 DATE: 06-07-2013
 SCALE: 1" = 40'

AZTEC
 CONSULTANTS, INC.

300 East Mineral Ave,
 Suite 1
 Littleton, Colorado 80122
 Phone: (303)713-1898
 Fax: (303)713-1897
 www.aztecconsultants.com

EASEMENT RELINQUISHMENT
 CITY AND COUNTY OF DENVER
 STATE OF COLORADO

JOB NUMBER 48115-22