

Denver Parks & Recreation

Proposed Park Designations

13th Round – Spring 2022

Land Use, Transportation & Infrastructure (LUTI) –
May 24, 2022

Park System History

- Park System had its origin in 1858 with the cities of Auraria, Denver City and Highland at the confluence of the South Platte River and Cherry Creek
- First park was Curtis Park in 1868
- First Park Board was created in 1893
- The Park Board directed the management and development of the park system until about 1904
- Under Mayor Speer, a charter amendment in 1904 was adopted that created the Department of “Improvements and Parks”
- In 1910 the Mountain Park System was established
- In 1956 the Department of Parks and Recreation was created.
- Parcels that were acquired, developed or treated as a park at this time (1956) became designated under this charter amendment
- Subsequent park designations are accomplished through the City Council ordinance process

Designation Considerations

- Supports a master plan (City Park)
- Has historical, cultural, ecological, or educational significance (Civic Center, Cheesman)
- Preservation of key visual corridors or scenic vistas (Cranmer)
- Park facilities have been or are planned to be constructed
- Area infrastructure / utilities are not in a state of flux that may impact or change the park (Hampden Heights Park)
- There are no title / ownership issues that cast a cloud on the City's title or right to possession of the park (Kennedy Complex, DEN Open Space)
- No pending or anticipated plans for making/expanding non-park uses within the park.

Park Designation Status

- Beginning of 2013
Approximately 68% of the park system was already designated a parkland
- 1st Round - April 2013
Approximately 180 acres became designated (72% of parks are designated)
- 2nd Round – January 2014
Approximately 275 acres became designated (78% of parks are designated)
- 3rd Round – April 2014
Approximately 164 acres became designated (82% of parks are designated)
- 4th and 5th Rounds – November 2014
Approximately 42 acres became designated (84% of parks are designated)

Park Designation Status

- 6th Round – Fall 2015
Approximately 88 acres became designated (85% of parks are designated)
- 7th Round – Spring 2016
Approximately 5.9 acres became designated (78% of parks are designated)
- Red Rocks Park Addition – Summer 2016
Approximately 98 acres added to Red Rocks became designated
- 8th Round – Fall 2016
Approximately 180 acres became designated (81% of parks are designated)
- 9th Round – Spring 2017
Approximately 65 acres became designated (82% of parks are designated)

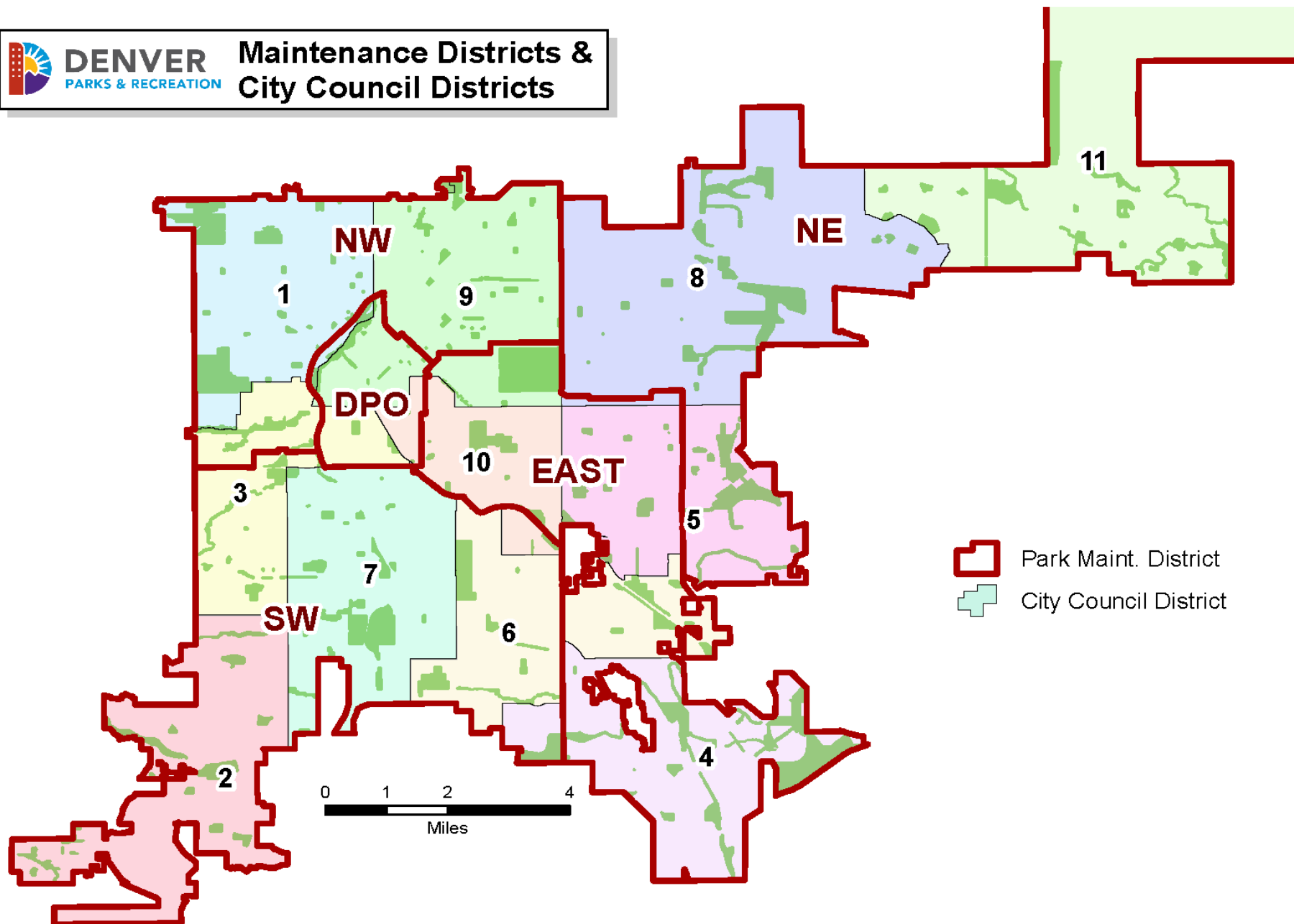
Park Designation Status

- 10th Round – Fall 2017
Approximately 3.6 acres became designated (82% of parks are designated)
- 11th Round – Winter 2018
Approximately 75 acres became designated (84% of parks are designated)
- 12th Round – Fall 2020
Approximately 99 acres became designated (82% of parks are designated)
- 13th Round – Spring 2022
Approximately 36 acres will become designated parkland
81% of the urban park system will be designated parkland



DENVER
PARKS & RECREATION

Maintenance Districts & City Council Districts





Gilpin County

Clear Creek
County

Echo Lake

Summit
Lake

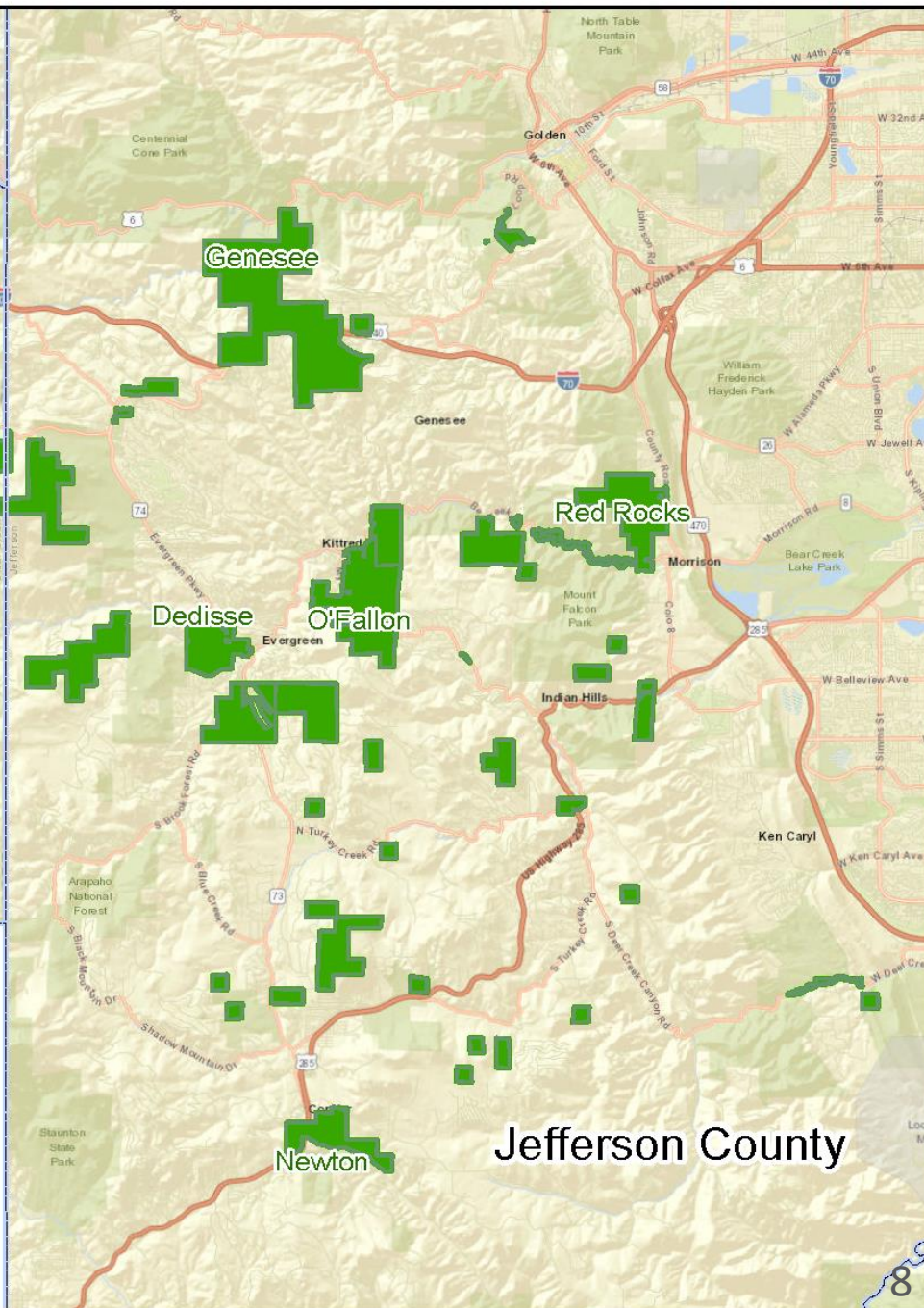
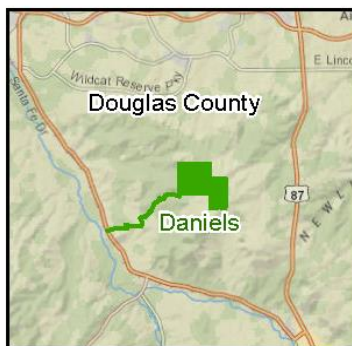
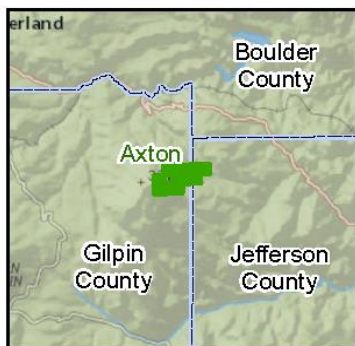
Genesee

Red Rocks

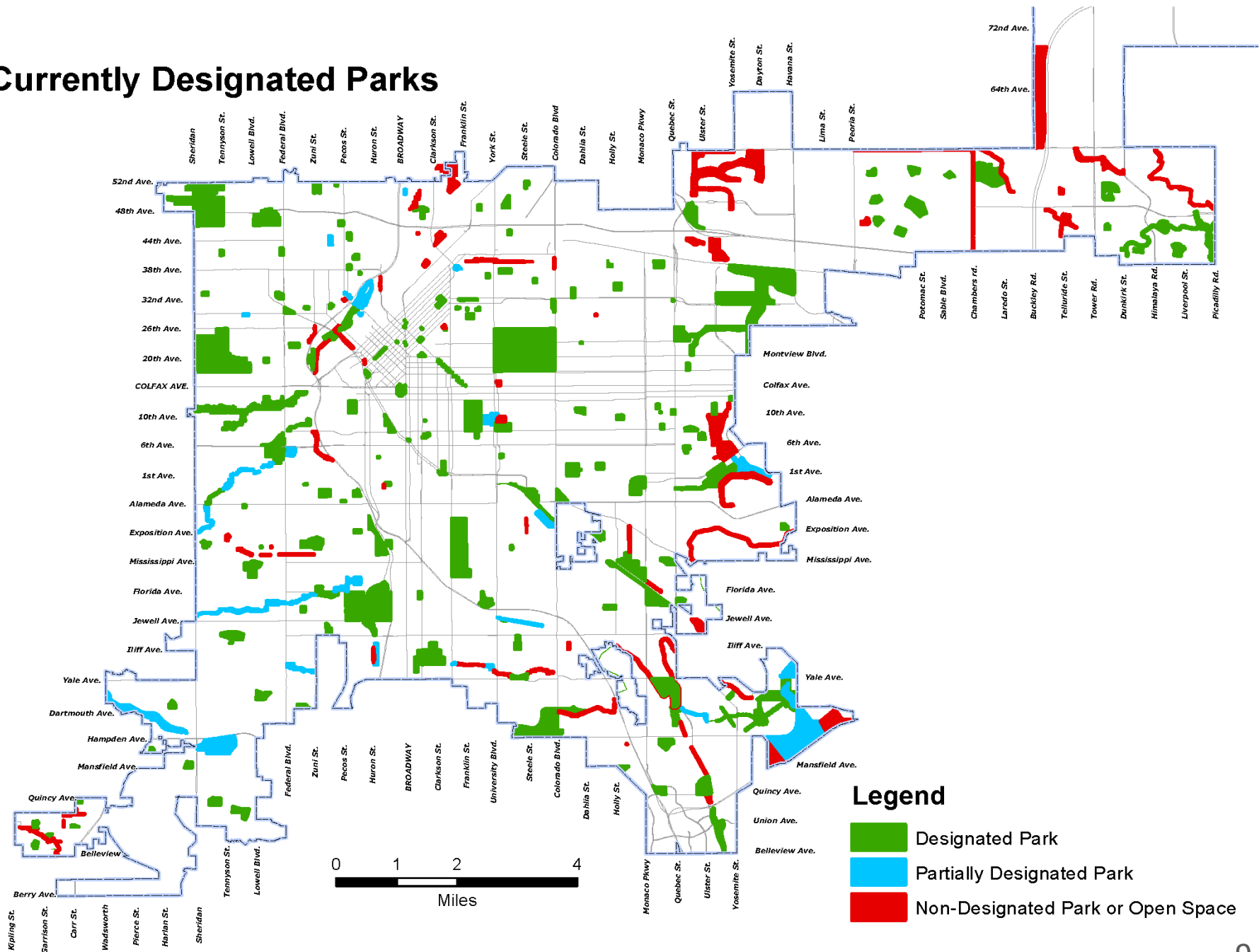
Dedisse
O'Fallon

Jefferson County

Newton



Currently Designated Parks



Park Designations

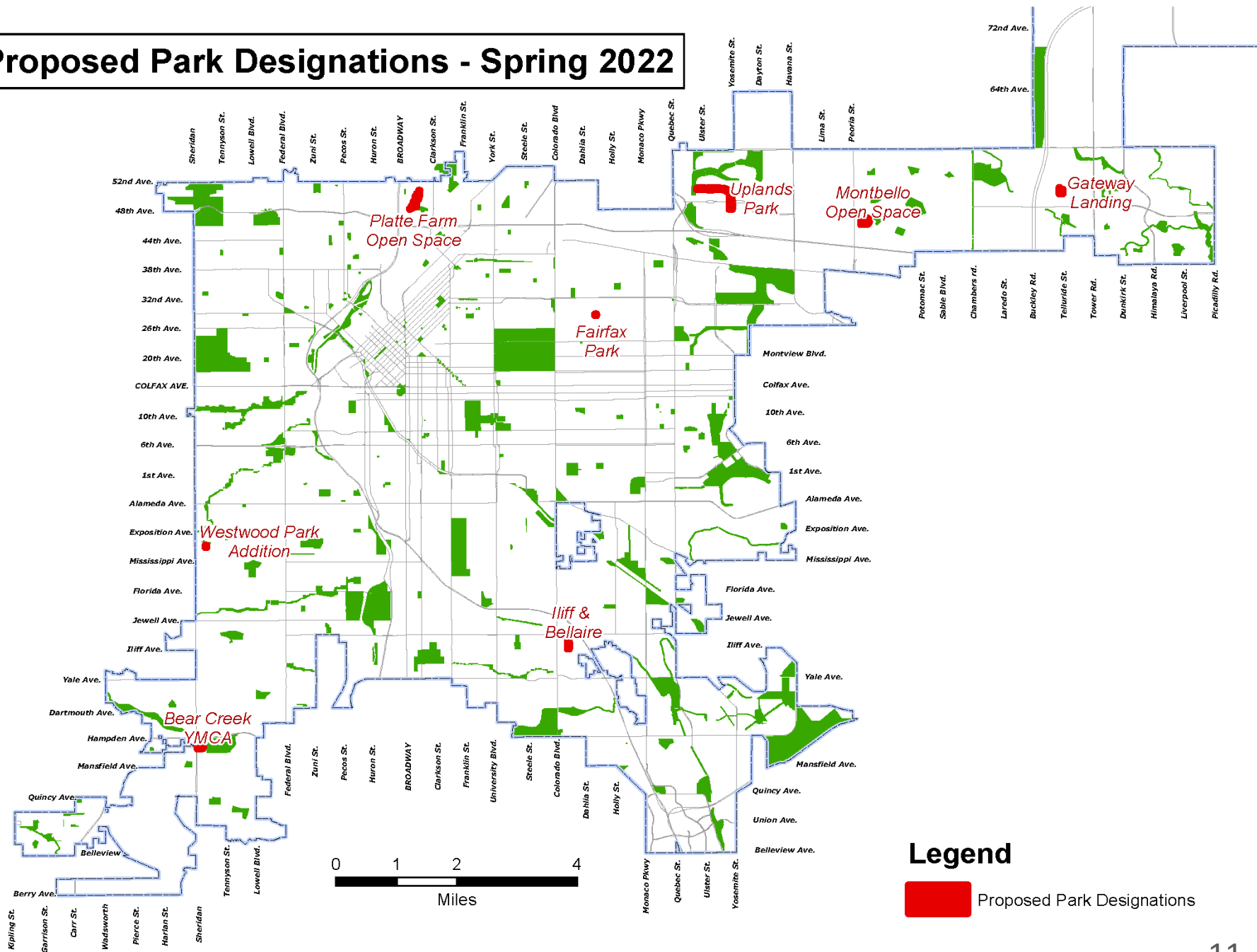
Proposed Designations - Round 13 - Spring 2022

LOCATION NAME	PARK TYPE	GIS ACRES	MAINT DIST	COUNCIL DIST
Bear Creek YMCA	Regional	4.1	SW	2
Fairfax Park	Open Space	0.4	NE	8
Gateway Landing	Undeveloped	3.0	NE	11
Illif & Bellaire	Undeveloped	1.9	E	4
Monbello Open Space	Open Space	5.6	NE	8
Platte Farm Open Space	Open Space	6.2	NW	9
Upland Park	Linear	14.6	NE	8
Westwood Park Addition	Neighborhood	0.5	SW	3

Total Acres:	36.3
---------------------	-------------

- Designation of parkland from 1956 to 2012 – 56 year time span: approximately 600 acres
- Designation of parkland from 2013 to 2021 – 9 year time span: approximately 1300 acres, twice as much as the prior 56 years
- Park and Open Space acreage added to the Denver Parks system from 2013 to 2022: approximately 1,226 acres
- Designated parkland cannot be sold or disposed of without approval of voters

Proposed Park Designations - Spring 2022





Bear Creek Park - YMCA Site

Aerial Imagery - 2020

1 inch = 100 feet at 11x17
100
Map Scale In Feet





Fairfax Park
Aerial Imagery - 2021

1 inch = 50 feet at 11x17
100
Map Scale In Feet





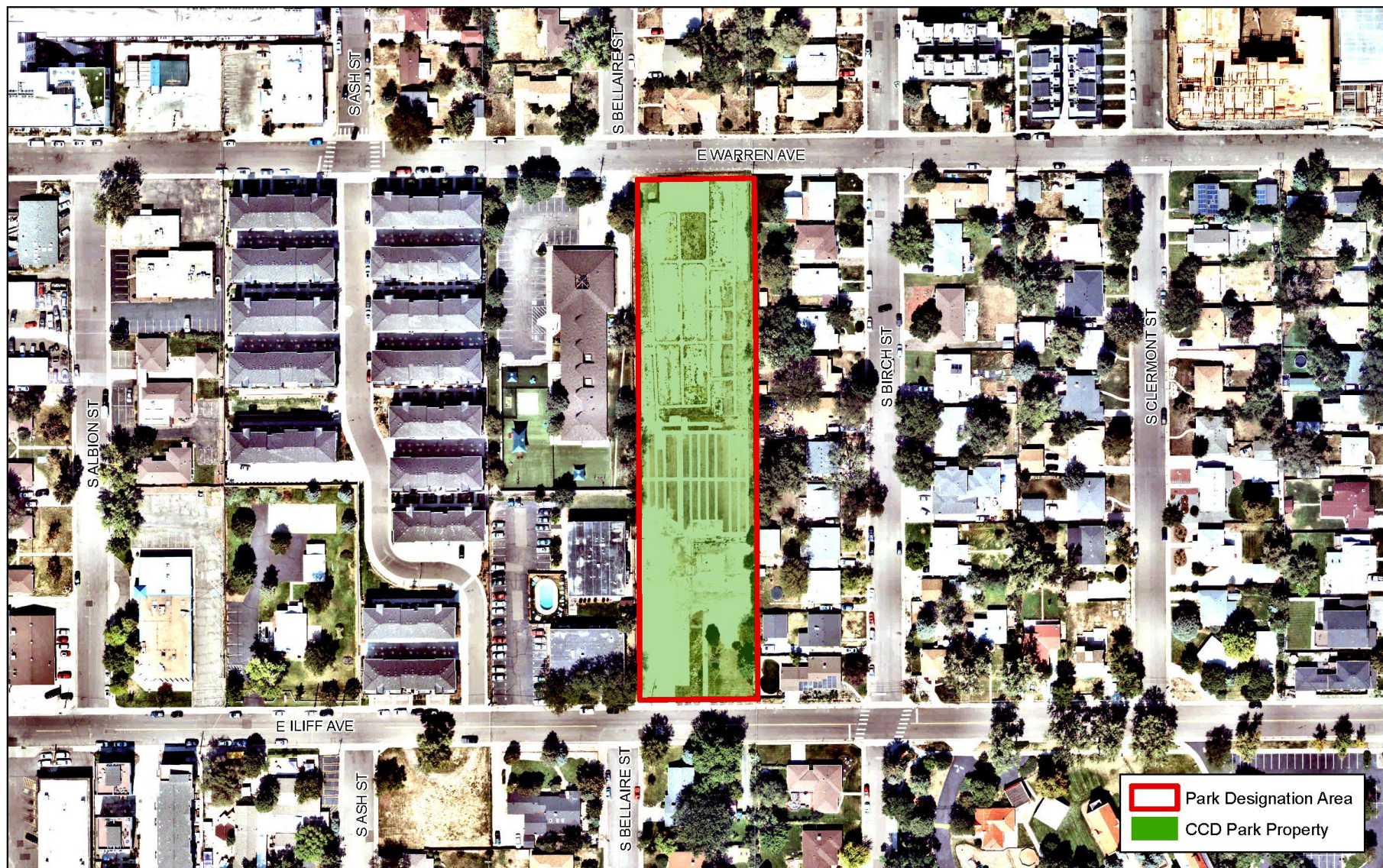
Gateway Landing Park

Aerial Imagery - 2021

1 inch = 100 feet at 11x17

100
Map Scale In Feet





Unnamed Iliff & Bellaire Park

Aerial Imagery - 2021

1 inch = 100 feet at 11x17

100
Map Scale In Feet





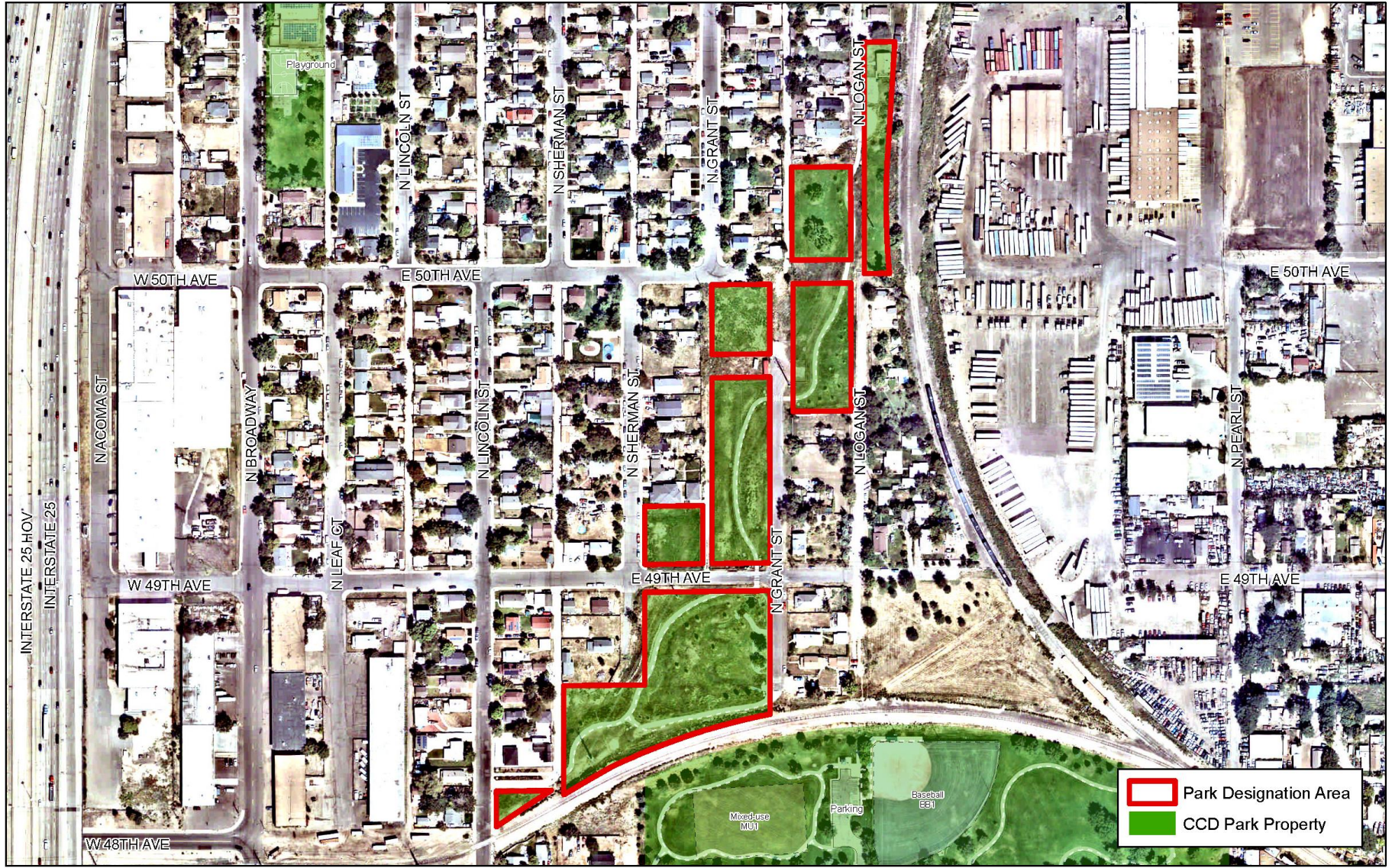
Montbello Open Space

Aerial Imagery - 2020

1 inch = 100 feet at 11x17

100
Map Scale In Feet

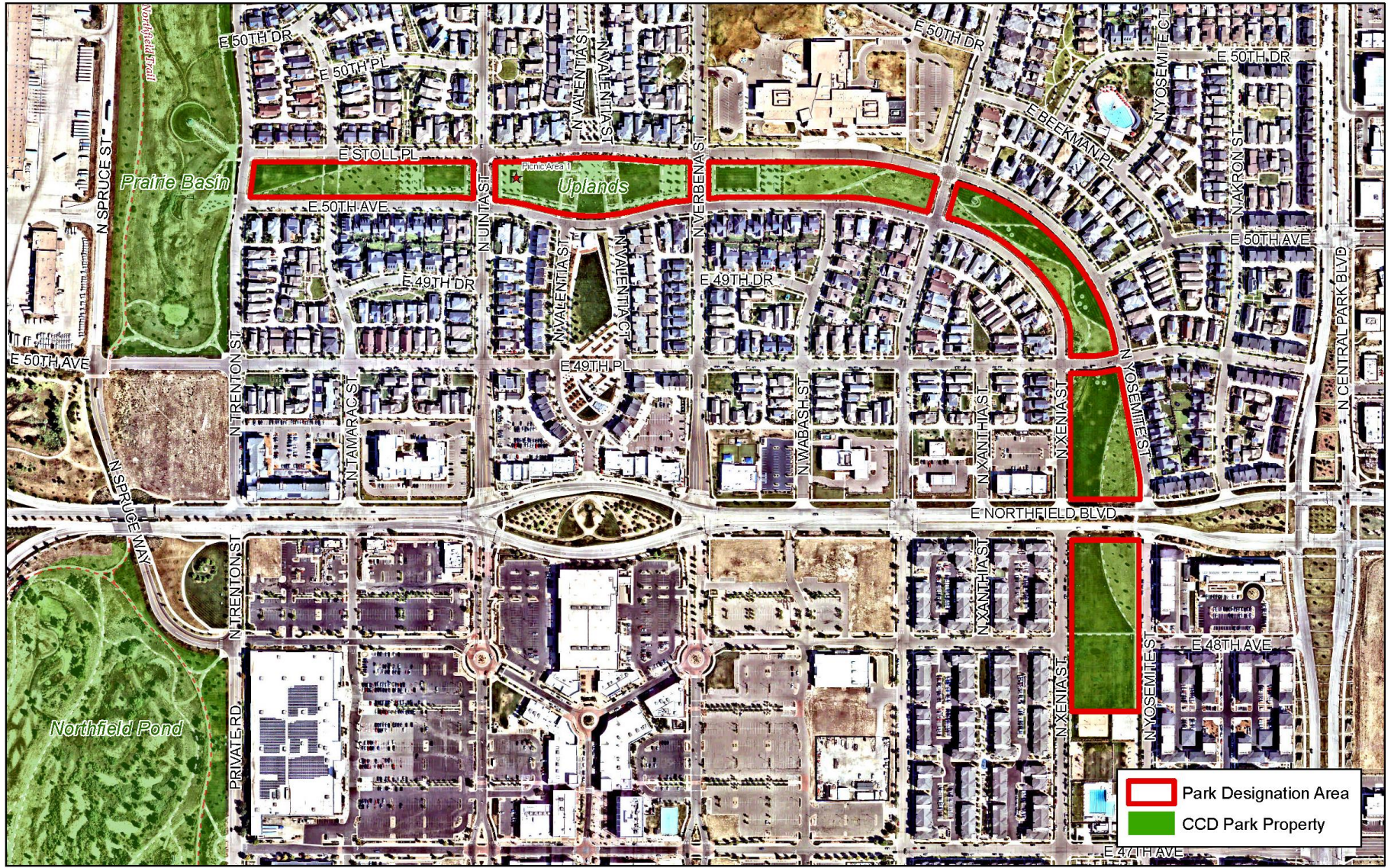




Platte Farm Open Space

Aerial Imagery - 2021





Uplands Park
Aerial Imagery - 2021

1 inch = 300 feet at 11x17
100
Map Scale In Feet





Westwood Park Addition

Aerial Imagery - 2021

1 inch = 50 feet at 11x17

100

Map Scale In Feet



Request for Approval of Park Designations

- CB 22-0591 – Bear Creek Park, Council District 2 - 4.06 acres
- CB 22-0592 – Fairfax Park, Council District 8 – 0.36 acres
- CB 22-0593 – Gateway Landing Park, Council District 11 – 3.0 acres
- CB 22-0594 – Montbello Open Space, Council District 8 – 5.6 acres
- CB 22-0595 – Platte Farm Open Space, Council District 9 – 6.2 acres
- CB 22-0596 – Iliff & Ballaire Park, Council District 4 – 1.88 acres
- CB 22-0591 – Uplands Park, Council District 8 – 14.6 acres
- CB 22-0598 – Westwood Park addition- Council District 3 – 0.48 acres

Questions / Comments

