





We were born in  
a bear market.

1987

SCFD



**We are home to a  
diverse economy**

**TODAY**

**SCFD**

**During the pandemic,  
SCFD was more than a funder – it was literally a  
life saver for our cultural ecosystem.**

**\$75 million**  
**in general operating**  
**support 2021**



**SCFD**



# HOW SCFD WORKS

For every **\$10 spent** in the metro Denver area, **one penny** of the sales tax goes directly to arts, culture and science organizations of all sizes with nearly **300** organizations funded.



**SCFD**

# SCFD Nitty-gritty

This money is then given out annually to qualifying organizations in three ways:



**(By statute)  
Largest National  
Organizations**



**(By statute and  
qualifying) Regional  
Organizations**



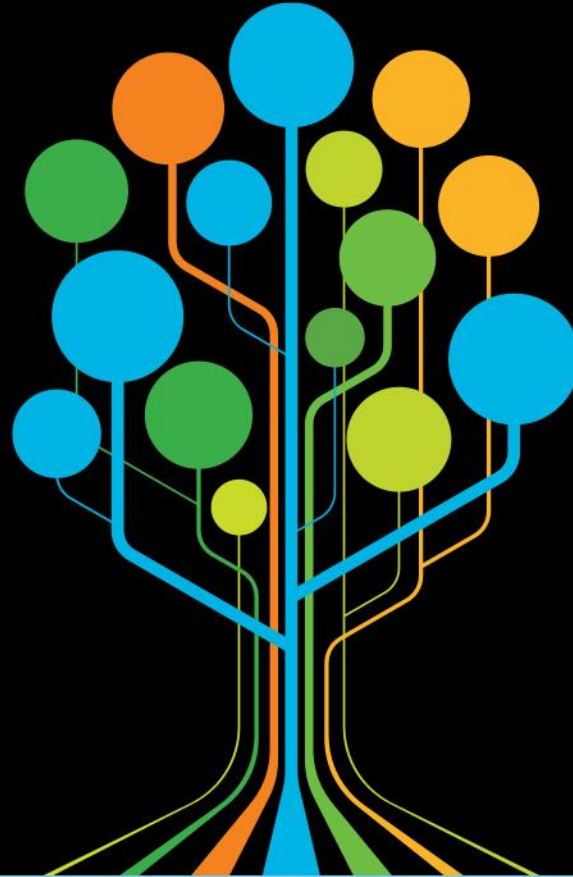
**(By county process)  
Local Organizations**

**SCFD**

# SCFD All Grown Up

## 1989

- 6 counties
- 1.8M Population
- 134 Organizations
- 14M distribution



## 2022

- 7 counties
- 3.2M Population
- 280+ Organizations
- 75M distribution

**SCFD**

# What's special about **SCFD**?



**Geographic  
reach**



**Diversity of  
organizations**

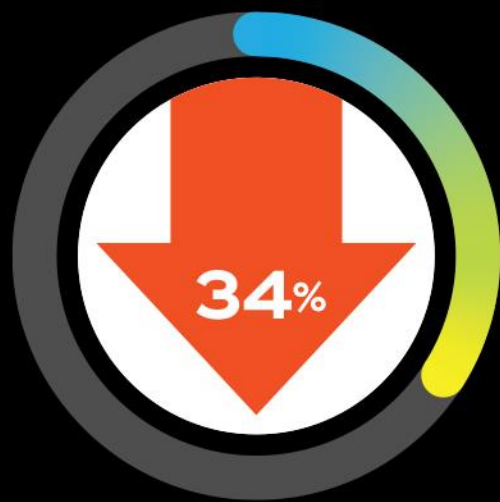


**Total  
funding**

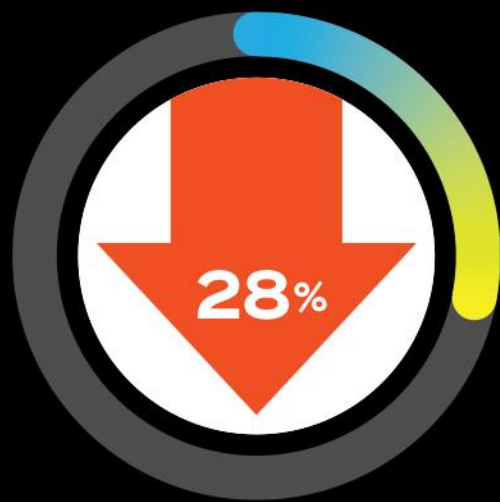
**SCFD**



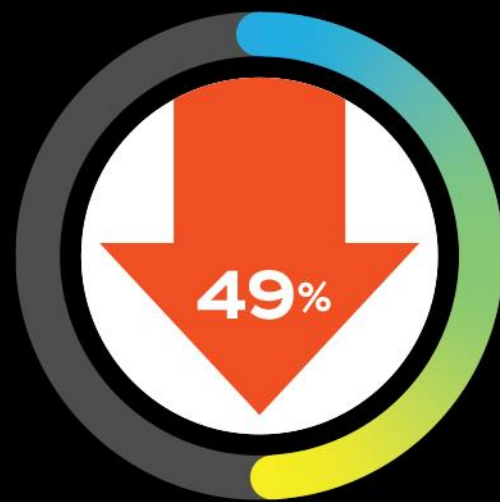
# During the pandemic shutdown in 2020, most key indicators for cultural organizations dropped:



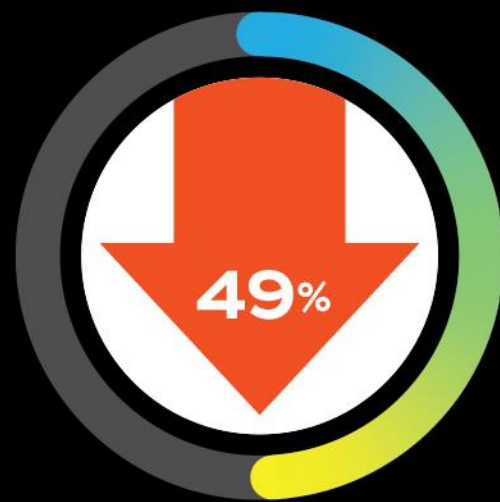
**Economic  
Activity**



**Jobs**



**Economic  
Impact**



**Attendance**

**SCFD**

# **Pandemic Bright Spot**

**Only two indicators increased for cultural organizations during the pandemic shutdown:**



**Giving to the Arts  
hit its highest level at  
\$225 million**



**SCFD delivered an  
additional \$75 million  
in stabilizing funding**

**SCFD**

# Denver County

**2021**

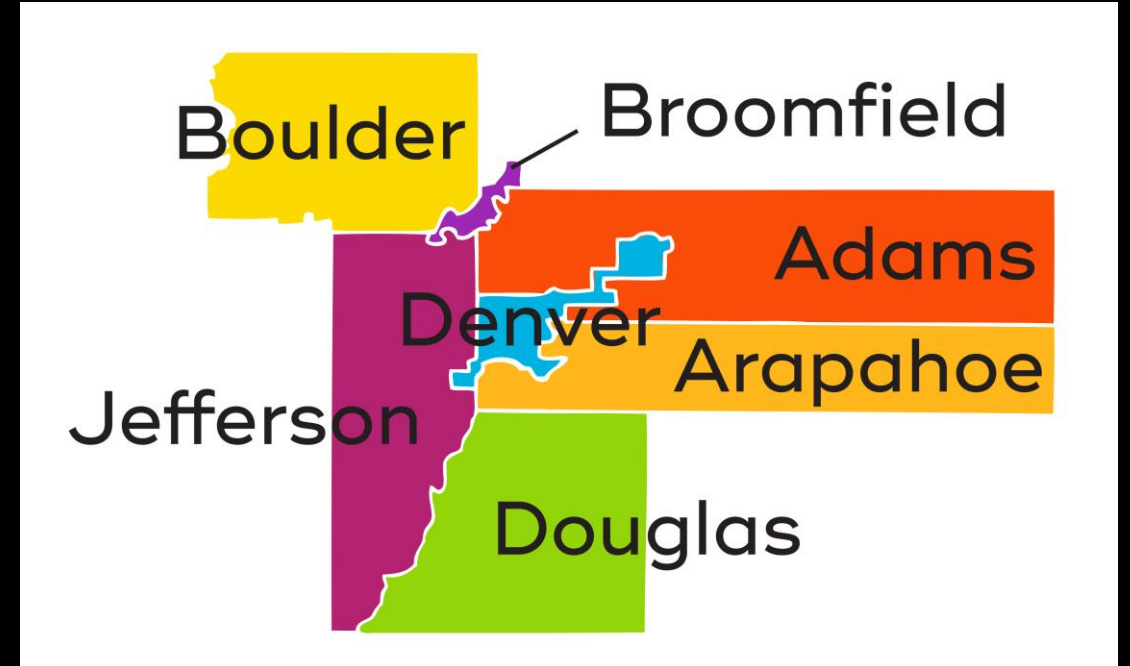
Distributed ~\$2.3M to 87 organizations

**2020**

Distributed ~\$2.2M to 87 organizations

**2019**

Distributed ~\$2.6M to 86 organizations



**SCFD**



# How **SCFD** Contributes

## COMMUNITIES

- Wonder
- Attendance
- Volunteerism
- Catalyst for additional investment

## EDUCATION

- Adult Educational
- K-12 Education

## ECONOMY

- Economic impact
- Economic activity
- Cultural tourism
- Jobs
- Seat Tax



**SCFD**