

DENVER PARKS AND RECREATION FEE PROPOSALS

Land Use, Transportation, & Infrastructure Committee

Council Bill 22-0976

August 16, 2022

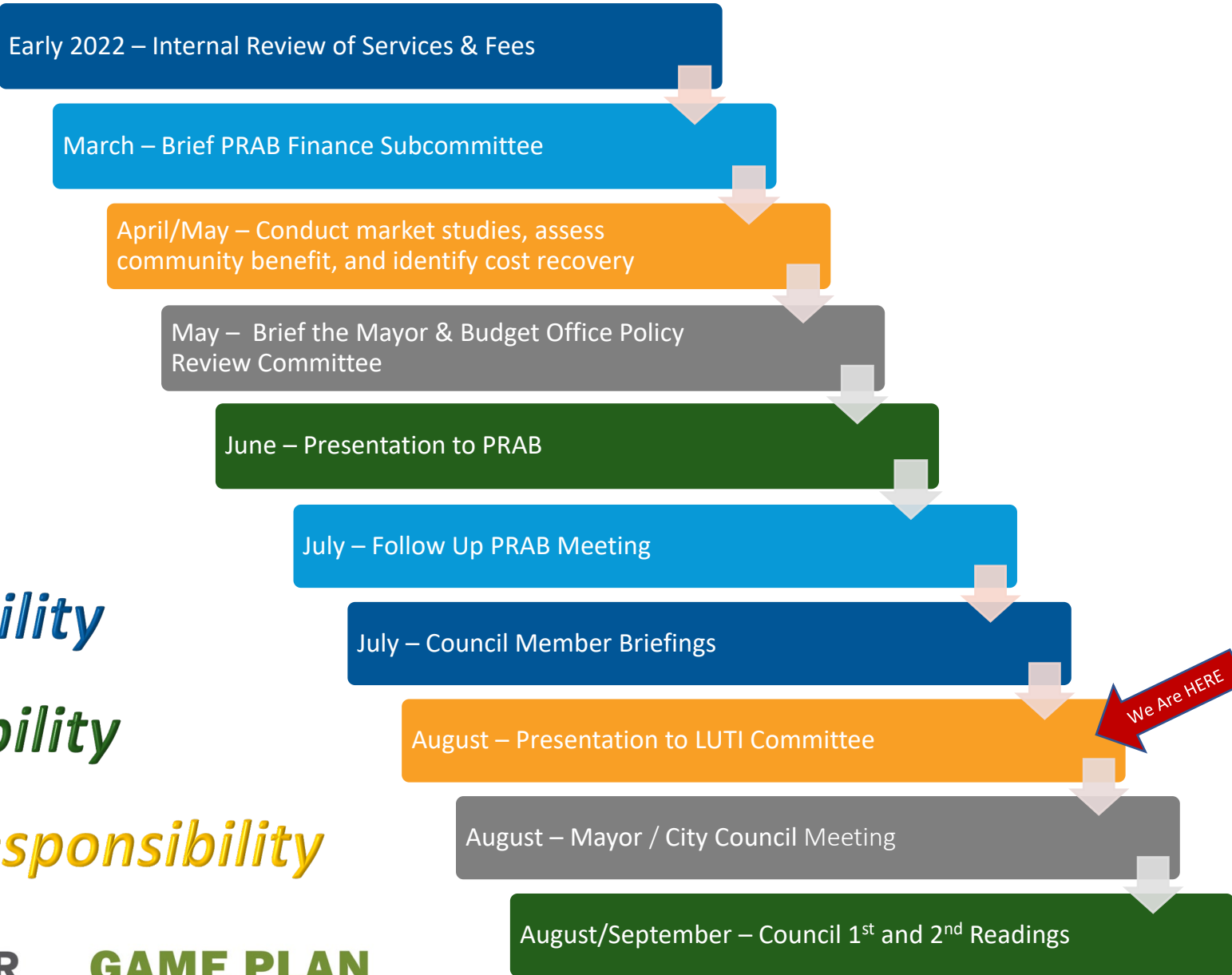


DENVER
PARKS & RECREATION

GAME PLAN
for a Healthy City



PARKS & RECREATION FEE SETTING PROCESS



Equity

Accessibility

Affordability

Fiscal Responsibility

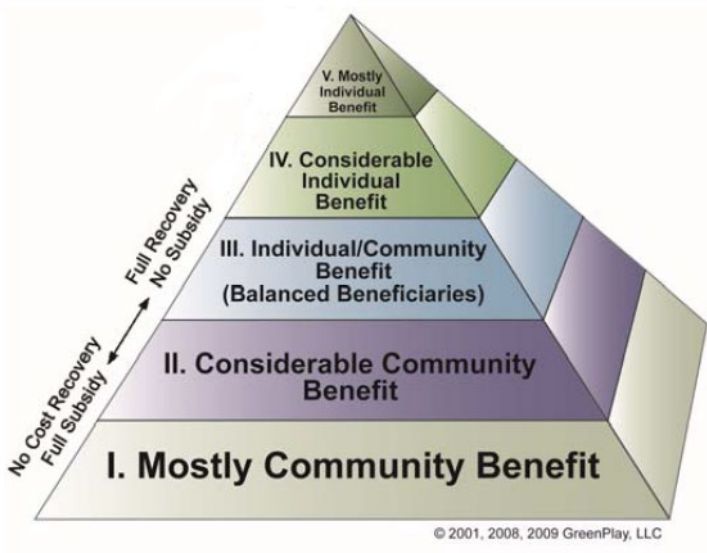


Resource Allocations & Priorities Plan (2013):

- **Community Benefit** Principle
 - High **community** benefit programs = community funded sources such as General Fund.
 - High **individual** benefit programs = individual user fees, donations, or partnerships.
- Service Assessment Model
 - Identify **comparable services** to assess changes in the market, identify opportunities for programming partnerships, and affirm DPR's position as the most affordable, accessible, and equitable service provider.

Game Plan for a Healthy City (2019):

- Playbook for creating parks, gathering places, activities and more that are easily accessible, well-maintained and equitable in every neighborhood.
- “Achieve **cost recovery** targets for park and rec facilities and services and adjust as needed.”



- Golf Enterprise
- Forestry Services
- Event Facility Rentals
- Athletic Rentals
- Mountain Parks Camping Rentals
- Mountain Parks Buffalo Bill Museum
- Outdoor Recreation Programs
- Recreation Programs & Activities

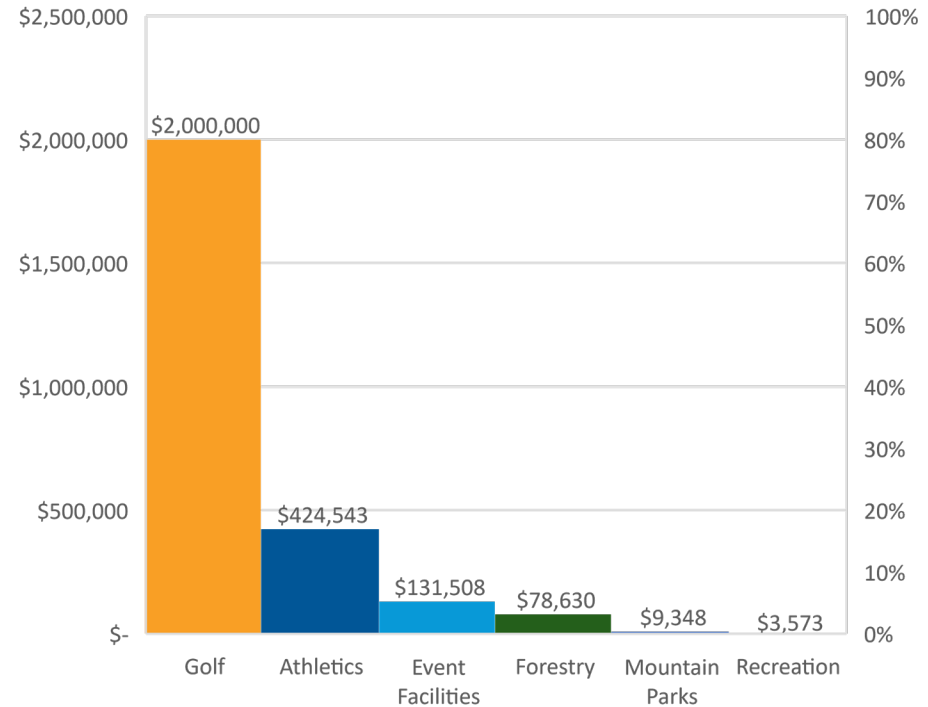


Department-Wide Themes

- **Streamline** and **simplify** fees to enhance cost transparency and support operations.
 - Remove **add-on charges** and capture in base fees.
 - Remove outdated language including **damage deposit** and **nonresident fees**.
 - Remove **non-fee language** currently outlined in DPR rules and policies.

- Utilize manager authority to **approve discount rates** and **'non-park-use' charges**.

DPR Department-Wide Fee Proposal
Distribution of Revenue Impact



Despite these changes, DPR remains among the most affordable options in the region for these services.

Department-Wide Fee Setting Methodology

- ✓ **Community Benefit**
- ✓ **Cost Recovery**
- ✓ **Local/National Comps**
- ✓ **Regional CPI**



Why Modify Fees Now?

12-month percentage change, Consumer Pricing Index (CPI), West Region



Fees last changed in 2009 with exception of Golf & CPP.

Source: US Bureau of Labor Statistics

- To support progress in **implementing the Game Plan for a Healthy City**, expanding access to high quality park space and recreation facilities.
- To **streamline** and **simplify** fees, enhance transparency, and support operations.
- To **target discounts** to the individuals, groups, and communities that need it most.
- To **reduce administrative costs** and direct recovering revenues to DPR programs.
- To **eliminate financial barriers** to park and recreation services.
- To **maintain rates** with neighboring jurisdictions.

✓ **High-quality & Equitable**

✓ **Affordable & Accessible**

✓ **Fiscally Responsible**



Why Modify Fees Now?

- To support progress in **implementing the Game Plan for a Healthy City**, expanding access to high quality park space and recreation facilities.
 - Expand access to Mountain Parks and Cultural Museums.
 - Improve equity and sustainability of fees to achieve service goals.
 - Enhance access to recreation programs. *(No changes to rec membership or program fees)*
 - Increase protection of Denver’s tree canopy.
 - Eliminate unnecessary financial or regulatory barriers to access
- To **target discounts** to the individuals, groups, and communities that need it most.
 - MyDenver & MyDenverPrime – Over 50,000 swipes per month!
 - 83% of eligible Denver youth are active card holders.
 - Financial Assistance – \$125 average monthly recreation discount!
 - PLAY discounts totaled nearly \$100,000 from Jan-Apr 2022, benefitting an average of 200 unique recreation users / month.
 - Denver Golf – Among the nation’s largest Jr Golf Program!
 - First Tee Jr Golf, Youth on Course, four free youth courses, and PGA HOPE for veterans
 - Discounted rates for nonprofit and school group activities, permits, etc.

✓ **High-quality & Equitable**

✓ **Affordable & Accessible**

✓ **Fiscally Responsible**

Golf	Forestry	Event Facilities	Athletic Permitting	Camping & Boating	Buffalo Bill	Outdoor Recreation	Recreation Programs
------	----------	------------------	---------------------	-------------------	--------------	--------------------	---------------------



*With eight golf facilities, Denver Golf has something for everyone: one 27-hole regulation golf course, four 18-hole regulation golf courses, one 18-hole mountain golf course, two 9-hole par three golf courses, two Miniature Golf facilities, four driving ranges, six restaurants, and the Denver First Tee program - **One of the largest Junior Golf programs in the country!***

Proposed modifications:

- Across the board increase to green fees and tournament fees based upon varying demand.

Cost Recovery Projections	2023 without increase	2023 with increase
Total Rounds	415,000	400,000
Total Operating Revenue	\$16,800,000	\$18,800,000
Total Operating Expenses	\$16,413,996	\$16,413,996
Total Cost Per Round	\$39.55	\$41.03
Total Net Revenue	\$386,004	\$2,386,004
Total Cost Recovery	102%	115%



Denver Golf's dynamic pricing model gives guests the flexibility to choose the course, time, and price best suited for their budgets and schedules.



18 Hole Course Fees	Current Rate	Proposed Rate
9 Hole Weekdays		
Adult	\$24	\$29
Senior	\$16	\$19
Junior	\$12	\$16
18 Hole Weekdays		
Adult	\$44	\$49
Senior	\$27	\$31
Junior	\$19	\$21
9 Hole Weekends All	\$29	\$33
18 Hole Weekends All	\$55	\$60

Other Course Fees	Current Rate	Proposed Rate
Harvard Gulch/Kennedy Par 3		
Adult	\$15	\$19
Junior	\$7	\$11
Senior	\$9	\$13
Tournament Fees		
9 Hole Weekday	\$29	\$37
9 Hole Weekend	\$34	\$42
18 Hole Weekday	\$49	\$57
18 Hole Weekend	\$60	\$72
Membership Fees	\$750	\$1,000
Plus 9 Holes	\$4	\$7
Plus 18 Holes	\$6	\$9

GOLF – Public Courses in Metro Area

18 Holes Weekends Projected Average



Current		
Rank	Golf Course	Rate
1	Fossil Trace	\$150
2	Green Valley Ranch	\$85
3	Fox Hollow	\$79
4	Lone Tree	\$70
5	Indian Peaks	\$68
6	Commonground	\$66
7	Saddle Rock	\$60
8	Coal Creek	\$59
9	Broadlands	\$59
10	West Woods	\$57
11	Meadow Hills	\$57
12	Murphy Creek	\$56
13	Legacy Ridge	\$55
14	Walnut Creek	\$55
15	Fox Hollow Homestead	\$53
16	Coyote Creek	\$51
17	South Suburban	\$50
18	Foothills - Meadows	\$50
19	Foothills	\$50
20	Riverdale Dunes	\$49
21	Hyland Hills	\$48
22	Thorncreek	\$47
23	Indian Tree	\$47
24	Buffalo Run	\$44
25	Denver Golf	\$44
26	Eagle Trace	\$43
27	Broken Tee	\$42
28	Aurora Hills	\$41
29	Spring Hill	\$36
30	Riverdale Knolls	\$33
31	Lake Arbor	\$32

Proposed		
Rank	Golf Course	Rate
1	Fossil Trace	\$150
2	Green Valley Ranch	\$85
3	Fox Hollow	\$79
4	Lone Tree	\$70
5	Indian Peaks	\$68
6	Commonground	\$66
7	Saddle Rock	\$60
8	Coal Creek	\$59
9	Broadlands	\$59
10	West Woods	\$57
11	Meadow Hills	\$57
12	Murphy Creek	\$56
13	Legacy Ridge	\$55
14	Walnut Creek	\$55
15	Fox Hollow Homestead	\$53
16	Coyote Creek	\$51
17	South Suburban	\$50
18	Foothills - Meadows	\$50
19	Foothills	\$50
20	Riverdale Dunes	\$49
21	Hyland Hills	\$48
22	Thorncreek	\$47
23	Indian Tree	\$47
24	Denver Golf	\$47
25	Buffalo Run	\$44
26	Eagle Trace	\$43
27	Broken Tee	\$42
28	Aurora Hills	\$41
29	Spring Hill	\$36
30	Riverdale Knolls	\$33
31	Lake Arbor	\$32



18 Hole Weekdays Seniors

18 Hole Weekdays Juniors

Current			Proposed		
Rank	Golf Course	Rate	Rank	Golf Course	Rate
1	Fossil Trace	\$77	1	Fossil Trace	\$77
2	Green Valley Ranch	\$55	2	Green Valley Ranch	\$55
3	Fox Hollow	\$55	3	Fox Hollow	\$55
4	Indian Peaks	\$47	4	Indian Peaks	\$47
5	Lone Tree	\$44	5	Lone Tree	\$44
6	Commonground	\$43	6	Commonground	\$43
7	Riverdale Dunes	\$40	7	Riverdale Dunes	\$40
8	Coal Creek	\$39	8	Coal Creek	\$39
9	Saddle Rock	\$38.50	9	Saddle Rock	\$38.50
10	Meadow Hills	\$36.50	10	Meadow Hills	\$36.50
11	Murphy Creek	\$35.50	11	Murphy Creek	\$35.50
12	Broadlands	\$35	12	Broadlands	\$35
13	Walnut Creek	\$35	13	Walnut Creek	\$35
14	West Woods	\$35	14	West Woods	\$35
15	Fox Hollow Homestead	\$34	15	Fox Hollow Homestead	\$34
16	Legacy Ridge	\$33	16	Legacy Ridge	\$33
17	Hyland Hills	\$32	17	Hyland Hills	\$32
18	Indian Tree	\$32	18	Indian Tree	\$32
19	Thorncreek	\$32	19	Thorncreek	\$32
20	South Suburban	\$31	20	South Suburban	\$31
21	Foothills - Meadows	\$30	21	Foothills - Meadows	\$30
22	Foothills	\$30	22	Foothills	\$30
23	Aurora Hills	\$29	23	Aurora Hills	\$29
24	Riverdale Knolls	\$28	24	Riverdale Knolls	\$28
25	Buffalo Run	\$27	25	Buffalo Run	\$27
26	Eagle Trace	\$27	26	Eagle Trace	\$27
27	Coyote Creek	\$26	27	Denver Golf	\$27
28	Broken Tee	\$26	28	Coyote Creek	\$26
29	Lake Arbor	\$26	29	Broken Tee	\$26
30	Denver Golf	\$25	30	Lake Arbor	\$26
31	Spring Hill	\$25	31	Spring Hill	\$25

Current			Proposed		
Rank	Golf Course	Rate	Rank	Golf Course	Rate
1	Coal Creek	\$49	1	Coal Creek	\$49
2	Fossil Trace	\$44	2	Fossil Trace	\$44
3	Riverdale Dunes	\$40	3	Riverdale Dunes	\$40
4	Green Valley Ranch	\$39	4	Green Valley Ranch	\$39
5	Indian Peaks	\$34	5	Indian Peaks	\$34
6	Saddle Rock	\$32	6	Saddle Rock	\$32
7	Murphy Creek	\$31	7	Murphy Creek	\$31
8	Meadow Hills	\$30	8	Meadow Hills	\$30
9	Riverdale Knolls	\$28	9	Riverdale Knolls	\$28
10	Lone Tree	\$27	10	Lone Tree	\$27
11	Aurora Hills	\$24	11	Aurora Hills	\$24
12	West Woods	\$23	12	West Woods	\$23
13	Fox Hollow	\$22	13	Fox Hollow	\$22
14	South Suburban	\$22	14	South Suburban	\$22
15	Spring Hill	\$22	15	Spring Hill	\$22
16	Eagle Trace	\$20	16	Eagle Trace	\$20
17	Fox Hollow Homestead	\$20	17	Fox Hollow Homestead	\$20
18	Indian Tree	\$19	18	Indian Tree	\$19
19	Commonground	\$18	19	Commonground	\$18
20	Broadlands	\$17	20	Broadlands	\$17
21	Broken Tee	\$17	21	Broken Tee	\$17
22	Hyland Hills	\$16	22	Hyland Hills	\$16
23	Coyote Creek	\$15	23	Denver Golf	\$16
24	Foothills	\$15	24	Coyote Creek	\$15
25	Foothills - Meadows	\$15	25	Foothills	\$15
26	Legacy Ridge	\$15	26	Foothills - Meadows	\$15
27	Walnut Creek	\$15	27	Legacy Ridge	\$15
28	Denver Golf	\$14	28	Walnut Creek	\$15
29	Buffalo Run	\$13	29	Buffalo Run	\$13
30	Lake Arbor	\$10	30	Lake Arbor	\$10
31	Thorncreek	\$10	31	Thorncreek	\$10

FORESTRY – Tree Service Licensing

The City Forester is responsible for promoting the health, safety, welfare, and quality of life of the residents of the city through the development of a **sustainable community forest** and **the preservation of trees**, and the establishment of standards for removal, maintenance, and planting of trees, including both publicly and privately maintained trees.

Proposed modifications:

- Increase the Tree Service License application fee and add an Exam fee.

Fee	Current Rate	Proposed Rate	2021 Revenue	Proposal Revenue
Tree Service Licensing Application	\$25	\$60	\$ 850	\$ 2,040
Tree Service Licensing Exam	\$0	\$120	\$0	\$ 4,080
TOTAL REVENUE			\$850	\$6,120



Comps	Application	Renewal	Exam
Boulder	\$125	\$125	N/A
CO Springs	\$110	\$110	\$120
Grand Junction	\$75	\$75	N/A
Longmont	\$60	\$60	N/A
Denver	\$60	\$25	\$120

“The city forester may promulgate such rules and regulations as the city forester deems necessary to carry out the purposes of this article.”



DPR has six event facility rentals perfect for a wedding or special celebration including: Chief Hosa Lodge, Washington Park Boat House, City Park Pavilion, Central Park Pavilion, Fleming Mansion, Montclair Civic Center

Proposed modifications:

- Modify Chief Hosa Lodge and City Park Pavilion rates.
- Compile all facility rentals under DRMC 39-121(10)c.
- Adjust definition of AM/PM hours.
- Remove kitchen and damage deposit fees.
- Remove holiday, discount, and minimum rental duration language.
- Authorize manager to approve discount rates.



Opened in 1918, the lodge is named after a Southern Arapaho tribal leader who was given the honorary title 'Hosa' by the Ute tribe, which meant 'peaceful and beautiful'.

PERMITTING – Park Facility Rentals

Fees	Current Rates		Proposed Rates		Revenue Impact	
	Peak	Off Peak	Peak	Off Peak	Current	Proposed
Chief Hosa Lodge M - Th AM	\$135	\$110	\$160	\$115	N/A	N/A
Chief Hosa Lodge M - Th PM	\$135	\$110	\$260	\$230	\$40,600	\$80,510
Chief Hosa Lodge Fri AM	\$215	\$160	\$420	\$230	\$11,058	\$19,040
Chief Hosa Lodge Fri PM*	\$350	\$270	\$420	\$230	\$52,570	\$53,920
Chief Hosa Lodge Sat AM	\$300	\$240	\$420	\$230	\$39,135	\$48,350
Chief Hosa Lodge Sat PM*	\$480	\$270	\$420	\$230	\$79,700	\$68,770
Chief Hosa Lodge Sun AM	\$270	\$190	\$420	\$230	\$8,090	\$9,660
Chief Hosa Lodge Sun PM	\$270	\$215	\$420	\$230	\$32,900	\$48,930
City Park Pavilion M - Th	\$600	N/A	\$900	N/A	\$19,100	\$33,300
City Park Pavilion Fri – Sun	\$1,000	N/A	\$1,500	N/A	\$64,820	\$117,000
<i>CHL Subtotal</i>					<i>\$264,053</i>	<i>\$329,180</i>
<i>CPP Subtotal</i>					<i>\$83,920</i>	<i>\$150,300</i>
TOTAL REVENUE					\$347,973	\$479,480

Chief Hosa Lodge (2019) = Hourly Rate; 1,065 hours rented

City Park Pavilion (2021) = 9-hour Block Rate; 115 blocks rented

PERMITTING – Park Facility Rentals

Hourly Comps*	Peak		Off Peak		Rental Block
	Weekday	Weekend*	Weekday	Weekend	
Evergreen Lakehouse	\$450	\$900	\$320	\$900	10 hour
Denver McNichols Building	\$650	\$650	\$450	\$550	10 hour
Evergreen Red Barn Wedding	\$400	\$600	\$320	\$480	10 hour
The Barn Wedding Evergreen	\$375	\$583	\$375	\$542	12 hour
DPR Chief Hosa Lodge	\$250	\$400	\$220	\$220	Hourly
Weddings @ Lakewood Plaza	\$239	\$259	\$239	\$259	3 hour
Grant Humphrey Mansion	\$200	\$250	\$150	\$200	4 hour
DPR Carla Madison Rooftop	\$75	\$250	\$75	\$250	6 hour
DPR City Park Pavilion	\$100	\$167	\$100	\$167	9 hour

*All rental block rates converted to hourly; sorted by Peak Weekend.

✓ **Quality Venues**

✓ **Incredible Views**

✓ **Affordable Rates**

PERMITTING – Park Athletics

More than 300 athletic fields are available for a variety of uses including lacrosse, rugby, tennis, baseball, softball, soccer, football, ultimate frisbee, kickball and more. DPR also operates a skatepark and nearly 200 courts are available for tennis, pickleball, and futsal.

Proposed modifications:

- Streamline and simplify athletic field and court rentals and remove tournament rates.
- Remove administrative charges including temporary vendor app and picnic rescheduling.
- Remove additional charges for lighting, press box rentals, and damage deposits.



**Proposed to take effect January 1, 2024*

Fee	Current Hourly	Proposed Hourly	2019 Revenue	Proposal Revenue
ADULT				
Grass/skin multi-use fields	\$31	\$35	\$395,529	\$446,565
Synthetic fields (profit)	\$92	\$100	\$99,912	\$108,600
Synthetic fields (non-profit)	\$46	\$50	\$65,964	\$71,700
Major fields	\$40	\$50	\$ 164,040	\$205,050
YOUTH				
Grass/skin fields - Monday-Friday	\$5	\$10	\$224,670	\$449,340
Grass/skin fields - Saturday/Sunday	\$6.75	\$10	\$210,735	\$312,200
Synthetic fields (profit)	\$54	\$50	\$6,858	\$6,350
Synthetic fields (nonprofit)	\$27	\$25	\$101,979	\$94,425
Major fields	\$25	\$25	\$8,575	\$8,575
TOTAL REVENUE			\$1,278,262	\$1,702,805

PERMITTING – Athletic Field Comp Rates



Local Comps

YOUTH GRASS/SKINS	Hourly
Westminster	\$50
Arvada	\$37
Commerce City	\$15
Aurora	\$35
Lakewood	\$25
Thornton	\$20
Highlands Ranch	\$18
Broomfield	\$16
South Suburban	\$15
Denver Public Schools	\$15
Denver Parks and Recreation	\$10

National Comps

YOUTH GRASS/SKINS	Hourly
Austin	\$51
Raleigh	\$35
Portland	\$18
Charlotte	\$17
Seattle	\$11
Minneapolis	\$10
Denver Parks and Recreation	\$10

ADULT GRASS/SKINS	Hourly
Westminster	\$50
Arvada	\$37
Aurora	\$35
Denver Parks and Recreation	\$35
Denver Public Schools	\$25
Lakewood	\$25
Thornton	\$20
Highlands Ranch	\$18
Commerce City	\$15
South Suburban	\$15

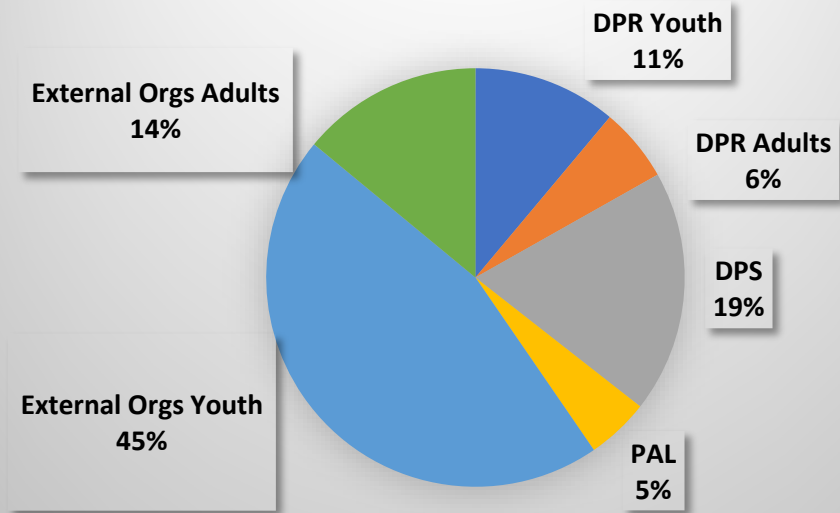
ADULT GRASS/SKINS	Hourly
Seattle	\$60
Austin	\$51
Portland	\$45
Raleigh	\$35
Minneapolis	\$35
Denver Parks and Recreation	\$35
Charlotte	\$17

YOUTH SYNTHETICS	Hourly
Aurora	\$55
Westminster	\$50
South Suburban	\$50
Denver Parks and Recreation	\$50
Thornton	\$40
Broomfield	\$32
Lakewood	\$25
Highlands Ranch	\$24
Denver Public Schools	\$15

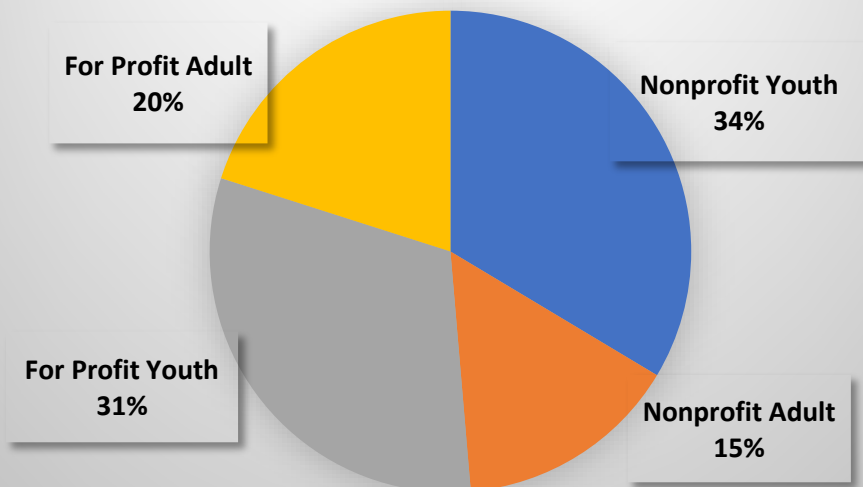
YOUTH SYNTHETICS	Hourly
Portland	\$70
Salt Lake City	\$57
Austin	\$51
Westminster	\$50
Denver Parks and Recreation	\$50
Charlotte	\$42
Raleigh	\$35
Seattle	\$16
Minneapolis	\$10



2019 All Field Users Hours of Use



2019 External Field # of Permitting Organizations



2019 Athletic Users:

- 307 fields utilized by 262 organizations over 114,612 hours
- 183 courts utilized by 16 organizations over 27,159 hours
- 75% of permitted hours serve youth

Of external permitting organizations:

- Equal split non-profit & for-profit
- 65% serve youth
- 35% serve adults

Permitting prioritization process:

1. DPR
2. DPS
3. External historical youth
4. External historical adult
5. First come, first serve



Fee	Current Rate	Current Permit	Proposed Rate	Proposed Permit
Volleyball League	\$600 / season	Unlimited hours	\$35 / hour	Designated hours
Volleyball Tournament	\$175 / tournament	Park hours	\$35 / hour	Designated hours

**Proposed to take effect January 1, 2024*

Proposed modifications:

- Remove volleyball-designated rates and utilize the multipurpose grass/skins rate to integrate volleyball with other adult sports permitting the same grass field inventory.

\$600 League Scenario:

- Current: Mon – Thurs from 5:00 – 9:00pm for 10 weeks
 - 160 hours or **\$3.75 / hour**
 - 10 courts per permit = \$0.37 / hour**
- Proposed: 160 hours @ **\$35 / hour**

\$175 Tournament Scenario:

- Current: **\$175 / day**
- Proposed: **\$350 / 10-hour day**





Five Denver lakes are open for hand-launched boating:

Sloan's Lake, Rocky Mountain Lake, Berkeley Lake, Smith Lake, Ferril Lake.

Proposed modifications:

- Remove motorboating fees to reflect activities allowed in Denver waters.
- Eliminate fees for hand-launched watercrafts such as sailboats, paddleboards, and kayaks to open waters to recreation without financial barriers.

Fee	Current	Proposed
Motorboat	\$ 245	Remove
Sailboat	\$126	Remove
Dealer (per visit)	\$15	Remove
Rowboat, canoe, etc	\$49	Remove
Mooring	\$118	Remove



Protects waterway ecosystems while enhancing accessibility, equity, and quality user experiences.

MOUNTAIN PARKS – Chief Hosa Campground



Chief Hosa campground opened in 1918 as “America’s first motor-camping area.” The campground spans 58 acres within the 2,400 acres of Denver’s Genesee Mountain Park, which is home to a city-owned bison herd and provides a unique opportunity to view these animals in a natural habitat.

Proposed modifications:

- Increase the nightly price for RV campsite rentals.
- Remove add-on fees to encourage park stewardship and ease administration.
- Remove weekly discount rate & the group area rate.
- Increase the max people per site to 6

Comps	RV Electric	RV Sewer	Tents
Clear Creek	\$48	\$55	\$32
Jeffco Fairgrounds	\$28-\$36	\$32-\$41	\$22-\$28
Bear Lake	\$35	\$35	N/A
DPR Chief Hosa	\$32-\$35	\$40	\$23
CO Parks & Wildlife	\$28-\$36	\$32-\$41	\$22-\$28

Fee	Current Rate	Proposed Rate	2021 Revenue	Proposal Revenue
RV30 Electric (14 sites)	\$30	\$32.50	\$73,752	\$79,885
RV50 Electric (6 sites)	\$32.50	\$35	\$54,810	\$59,010
RV Sewer (4 sites)	\$32.50	\$40	TBD	TBD
Tents	\$23	\$23	\$49,450	\$49,450
Pet	\$1	Remove	N/A	N/A
Dump	\$23	Remove	\$1,610	0
Amp	\$2.50	Remove	N/A	N/A
Extra Person	\$3.11	Remove	N/A	N/A
Group Area	\$6	Remove	N/A	N/A
TOTAL REVENUE			\$179,622	\$188,345

MOUNTAIN PARKS – Buffalo Bill Museum



Born in 1846, William F. Cody experienced the Old West to its fullest. His skill as a buffalo hunter gained him the nickname "Buffalo Bill." Located in Lookout Mountain Park, the site overlooks the natural beauty of the Great Plains and the Rockies, attracting over 400,000 annual visitors.

Proposed modifications:

- Extend the eligible age for children’s admission from 6-15 to 6-17 years old to enhance youth access.
- Increase military rate to the nearest dollar to simplify fee calculations, cash payments, and the need for change.
- Remove group rates and utilize manager’s existing authority to authorize discount rates.

Buffalo Bill Comps	Military	Children
Molly Brown House	\$12	\$10
MCA Denver	\$7	\$0
Firefighters Museum	\$8	\$7
4 Mile Park	\$7	\$6
DPR Buffalo Bill	\$2	\$1

Fee	Current Rate	Proposed Rate	% Change	2019 Revenue	Proposal Revenue
Children (6-15 years)	\$1	\$1	0%	N/A	N/A
Children (16-17 years)	\$5	\$1	-80%	N/A	N/A
Active-Duty Military w/ID	\$1.50	\$2	25%	\$1,269	\$1,692

Free entry to MYDenver and MYDenverPrime card holders.

RECREATION – Outdoor Recreation



Outdoor Recreation offers a variety of outdoor activities for all ages throughout the year and include climbing at Genesee Ropes Course, group hiking in the mountains, teambuilding programs, stand up paddle boarding, adventure programs and more.

Proposed modifications:

- Update Title to “Challenge Course & Overnight Group Camping”.
- Adjust group camping rate structure to incorporate new Yurts and modify challenge course rates.
- Add language authorizing manager to approve administrative fees.
- Remove add-on and skills fees.



RECREATION – Outdoor Recreation



Fee	Current Rate	Proposed Rate	2021 Revenue	Proposal Revenue
Group Rustic Camping	\$50/group	Restructure**	\$1,350	-
Chief Hosa Camping	\$75/group	Restructure**	\$820	-
Group Rustic Camping	-	\$150	-	\$5,700
Genessee Circhouses (each)	-	\$125	-	TBD
High Challenge Course Half Day	\$34/person	\$36/person	N/A	N/A
High Challenge Course Full Day	\$40/person	\$42/person	\$850	\$892
Nighttime Program Add On	\$10/person	Remove	-	-
Equipment Rentals	\$15/person	Remove	-	-
TOTAL			\$3,020	\$6,592

Group Camping Comps	Group Rate	Cap	Rate per Person
CPW Chief Ouray (Grand)	\$432	72	\$6
CPW Cherry Creek (Arapahoe)	\$216	36	\$6
Golden Gate Canyon (Gilpin / Jeffco)	\$364	75	\$5
Denver Parks & Rec	\$150	50/75	\$2 - \$3
Roosevelt NF (Larimer)	\$145	100	\$1.45
Pawnee Grasslands (Weld)	\$120	100	\$1.20

Circhouse Comps	Group Rate	Cap	Rate per Person
Marble Mountain (Gunnison)	\$195	4	\$49
Never Summer Nordic (Jackson)	\$140	5	\$28
Denver Parks & Rec	\$125	8	\$16
Golden Gate Canyon (Gilpin / Jeffco)	\$90	6	\$15

RECREATION – Programs and Facilities

Denver recreation opportunities include access to 30 recreation centers, 31 pools, memberships, facility rentals, and eight programs offering fitness, athletic, art, and cultural activities for individuals of all ages.

Proposed modifications:

- Replace resident-specific language with general fee language to enhance accessibility.
- Remove add on charges relating to scoreboard rentals, damage deposits, and cancellation fees.



Recreation Center Services:

- 170,103 Active Memberships
- 43,789 MYDenver entries by 13,982 unique youth
- 22,820 MYDenverPrime
+ Silver Sneakers entries
- 7,246 free fitness class participants
- 15,473 free meals



Monthly Data reflecting June 2022



Approval of Council Bill 22-0976

Amends Chapters 32 and 39 of D.R.M.C. for park fees as presented for the following areas:

- Golf
- Forestry
- Event Facilities
- Athletic Permitting
- Camping & Boating
- Mountain Parks
- Outdoor Recreation
- Recreation Programs

Questions

THANK YOU

✓ *Equity*

✓ *Affordability*

✓ *Accessibility*

✓ *Fiscal Responsibility*



DENVER
PARKS & RECREATION

GAME PLAN
for a Healthy City

