

Goods Lines								
Line Number	Item Name	Supplier Item Identifier	Description	Due Date	Unit of Measure	Quantity	Unit Price	Line Amount
1			Truck upfit to Pena Blvd super combo (DEN SPEC)		Each	2	\$297,335.00	\$594,670.00
2021 Capital Replacements for W-08-080 & W-08-081 On CCD contract proposal #0751A								
2			Add on optional Wing plow option (DEN spec)		Each	2	\$35,525.00	\$71,050.00
2021 Capital Replacement for W-08-080 & W-08-081								
3			Truck upfit to Pena Blvd. super combo plow truck		Each	3	\$297,335.00	\$892,005.00
2022 Capital replacements for W-08-082, W-08-083, W-08-084 Upfits for RQ-00085901								
4			Add on optional wing plow option		Each	2	\$35,525.00	\$71,050.00
2022 Capital replacements for W-08-082 & W-08-083 Upfits for RQ-00085901								

This Purchase Order is for the purchase of a total of five (5) Upfits for trucks on PO-00118767 for Capital Replacements 2021 and 2022.

\*All Terms and Pricing of this purchase order are made pursuant to Supplier Contract SC-00003211.\* and Quote MRE1549-1.

This Purchase Order is contingent upon approval by City Council as required in DRMC 3.26(e)



Authorized By

By accepting this Purchase Order you agree to the Terms and Conditions of the General Services Purchasing Division.  
Follow the URL provided to the Purchase Order Terms and Conditions –  
<http://www.denvergov.org/content/denvergov/en/purchasing-main-page/POterms.html>



**O.J. Watson Company, Inc.**  
 5335 Franklin Street  
 Denver, Colorado 80216  
 303-295-2885 or 800-332-2124  
 Fax: 303-296-8049  
 www.ojwatson.com

## Quotation

Page 1 of 18

**Customer:** DENINTL  
 Denver Int'l Airport  
 DEN Maintenance Center  
 27500 East 80th Ave.  
 Denver CO 80249-6340

**Contact:** Steve Ricci  
**Phone:** 303.342.2778  
 2nd : 720.391.5946  
**Email:** [Steven.Ricci@flydenver.com](mailto:Steven.Ricci@flydenver.com)

**Salesperson:** Dick Eckrich

**Quote Number:** MRE1549-1

**Quote Date:** 08/26/2022

**Quote valid until:** 09/26/2022

**Revision Number:** 1

**Work Order:**

### Build Information:

<b>Year / Make / Model</b>	2023 International	<b>End User</b>	Denver International Airport
<b>Cab Configuration</b>	REGULAR	<b>Unit #</b>	
<b>Fuel Type</b>	DIESEL	<b>Item / PO#</b>	
<b>CA / CT</b>		<b>Operation</b>	<b>Pena Blvd.</b>
<b>Rear Axle</b>			

### Quoted Items:

#### Description of Work

***O.J. Watson Company, Inc. is pleased to submit the following quotation in accordance with Denver International Airport specifications and pricing in accordance with the OJW / City & County of Denver Master Supplier Contract No. SC-00003211 including:***





**O.J. Watson Company, Inc.**  
5335 Franklin Street  
Denver, Colorado 80216  
303-295-2885 or 800-332-2124  
Fax: 303-296-8049  
www.ojwatson.com

## Quotation

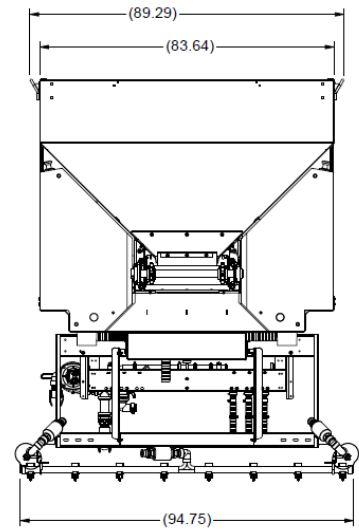
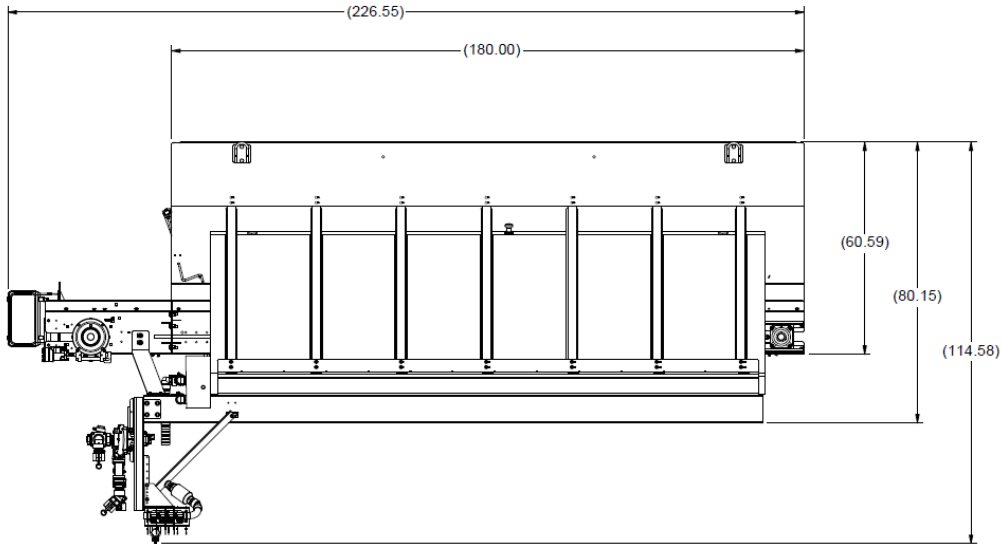
Page 2 of 18

### Description of Work

**Furnish and Install Monroe Frame Mounted "Super-Combo" Granular / Liquid Spreader model MSV-180-84-62-304SS chassis mount Combo unit DIA special MCV hydraulic spreader including:**

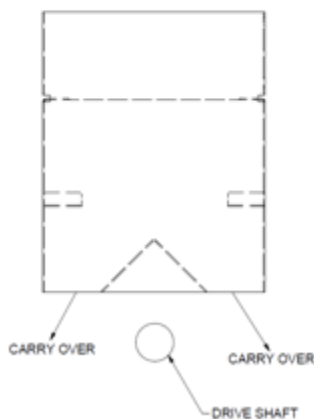
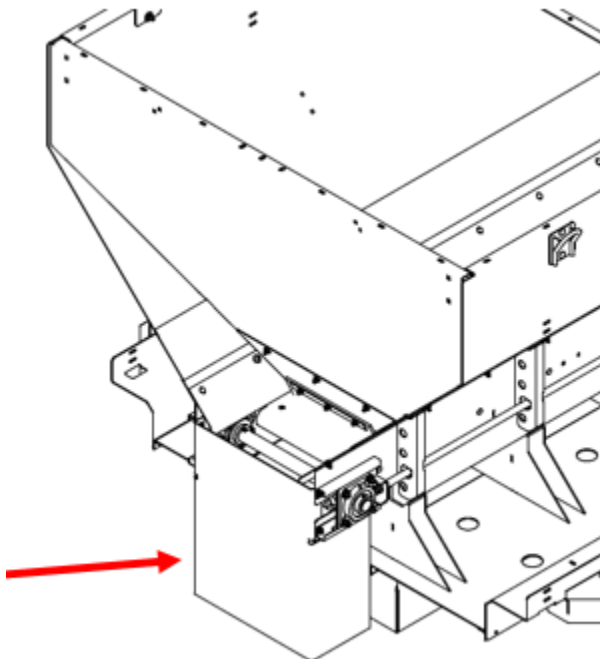
- 10 gauge stainless steel hopper with 45 degree sloped sides
- Top edge of body is 2" double crimped
- Hopper is 84" in width
- 7 gauge longitudinals with the longitudinals extended for supporting the spinner assembly
- Longitudinals shall be tied together with 3" channel cross sills
- The channel cross sills shall tie the lower edge of the longitudinals to each side support
- The cross supports shall be wide enough to allow to body to slide into a dump body if not frame mounted
- A bolt-on 6" x 9.0# wide flange "H" beam will be elevated 3" above the top edge of the hopper, thus providing a longitudinal brace and hinge point for the top screens
- There shall be a 2" x 2" angle welded from the "H" beam to each hopper side for additional side support
- The 12" x 18", 10 gauge feed gate and ruler shall be provided at the rear of the hopper to allow for accurate discharge
- A Self-locking screw type gate jack shall open and close gate
- There shall be 10 gauge formed side supports that extend the full side angle height spaced on approximately two foot centers
- A heavy duty lift loop shall be provided at each corner for lifting of body
- The rear endplate shall be reinforced inside and supported to give it maximum strength
- Conveyor system shall be of chain bar flight type running longitudinally with the body feeding material to the feed gate opening
- The overall conveyor width shall be 24"
- To protect the chain link strands, a 10 gauge replaceable chain shield shall cover the strands exposing only the drag bar to the material
- The conveyor floor shall be of flat design and manufactured of replaceable 3/16" steel and rolled over edges
- The conveyor chain shall be driven through the worm drive gearbox by a low speed/high-torque "orbital type" hydraulic motor. The motor shall be directly coupled to the gearbox and protected from the elements by a cast housing
- The worm gear drive shaft shall have provision for a servo sensor, integral with the driveshaft
- The cast iron gearbox shall have hardened and ground bronze gears mounted on 2" diameter drive shaft and supported on tapered roller bearings
- The gears shall be machine cut and mounted in anti-friction sealed bearings and running in oil
- The gearbox ratio shall be 50:1
- The drive and idler sprockets shall be 8 tooth cast grey iron sprockets keyed to the 2" diameter drive shaft and 2" idler shaft
- Both conveyor shafts shall have heavy duty, dust sealed self-aligning four bolt flange bearings equipped with grease fittings
- The conveyor shall have an internal front wiper and an external rear wiper
- A heavy duty spring loaded idler adjustment assembly with 4" of adjustment
- Conveyor chain is heat treated, 2.25 pitch, self-cleaning, pintle type, with 7/16" pins and tensile strength per strand of 21,000 pounds
- Chain shall utilize a 3/8" x 1-1/2" x 18-3/4" cross bar welded on both the top and bottom to every other chain link, and shall have an overall width of 22-1/4"
- Cross bars are approximately 4.5" on center
- Spinner disc is 20" in diameter, manufactured from poly
- The disc is mounted on a cast iron replaceable hub that is connected directly to the top mounted spinner motor
- Material is guided from the conveyor to the spinner assembly with two internal adjustable 10 gauge stainless steel material deflectors
- Entire spinner assembly is manufactured of 10 gauge STAINLESS steel and is adjustable in height
- There are 4 external baffles on the spinner assembly that are adjustable
- Hopper length is 15 feet; 84" width; 62" height
- Hopper capacity is 11.9 cubic yards
- Stainless steel chassis mount skid
- Speed sensor in conveyor motor
- Rear grease extensions
- Rear chain slack adjusters
- Inverted V - STAINLESS STEEL
- C-DOT deflector kit
- Rear ladder kit
- Rear conveyor cover kit
- Tandem axle fender kit
- Tip-up spinner assembly with poly spinner disc
- Spinner extension kit

**Description of Work**



**UPDATED MATERIAL OVERFLOW CONTROL:**

- Stainless steel sub floor
- Wiper system
- Integrated front overflow material discharge chute



**Description of Work**

**LIQUID:**

- 1300 Gallon poly tank kit \*TANKS ARE REMOVABLE\*
- (3) Lane anti-ice system
- 7 GPM Closed loop prewet system



**V-BOX LIGHTING: - (Also listed within 'Lighting Section")**

- Integrated TOVAR light bar populated with:
- One (1) oval LED AMBER strobe
- One (1) oval LED BLUE strobe
- Two (2) oval LED RED stop/tail/turn lights
- Three (3) center LED RED 3-ID lights
- Four (4) LED RED clearance lights
- 6-way electric socket
- Chassis mounted V-Box marker lights
- One (1) clear LED spinner light located on the spinner chute assembly actuated from a switch on the Monroe In-Power switch pack

**TARP:**

**Shurco Electric swing arm tarp assembly including:**

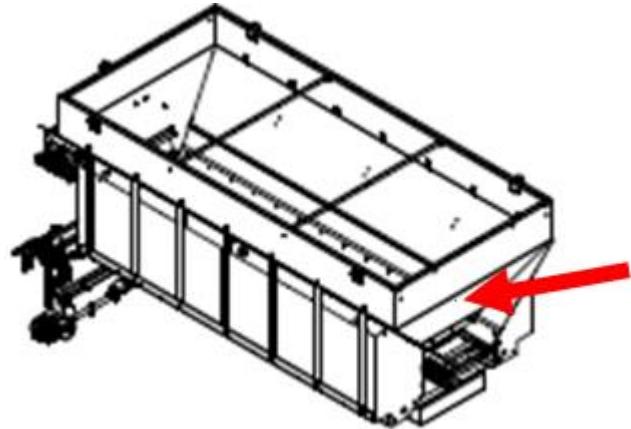
- 90 degree worm gear motor
- Pilot slide arm
- Electric motor assembly with manual over ride **MOUNTED AT THE FRONT OF THE COMBO UNIT ON "TARP MOTOR SHELF" AS TO NOT INTERFERE WITH REAR DRAG CHAIN AND SPINNER CHUTE.**
- Vinyl tarp
- Actuated from two switches on In-Power switch panel; "tarp-out" & "tarp-in"



**Description of Work**

**TARP NOTE:**

*System will be installed on the sander and will rotate from curbside to street side to close.*

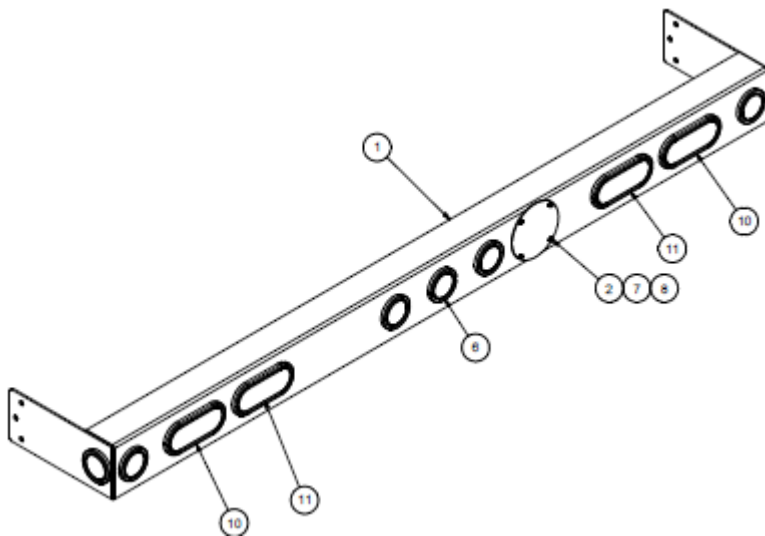


Location of tarp motor shelf

**CAMERA KIT:**

*Force America camera kit displayed in 6100 controller including*

- **Camera 1:** Camera 1 is to be located on top of the frame mounted cab shield facing to the rear showing the position of the tarp; "open" - "closed"
- **Camera 2:** Camera 2 is to be located within the Tovar Light bar facing to the rear



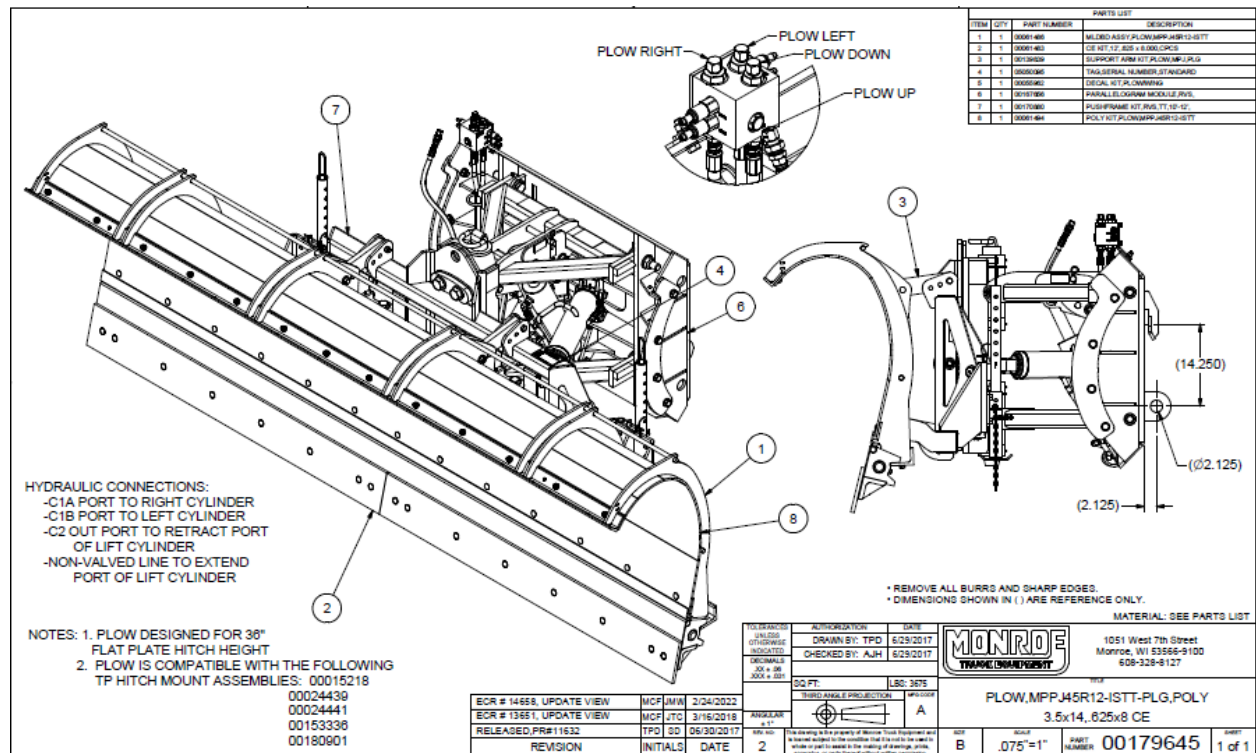
**Description of Work**

**SAFETY AND MISCELLANEOUS ITEMS:**

- STAINLESS STEEL Front material overflow deflector
- Tandem axle fender kit
- Chassis mounting kit
- Two (2) sets of mud flaps with flap stiffener kit, one (1) set ahead of front tandem and one (1) set behind rear tandem
- Conspicuity tape installed down each side of the Super Combo above tank assemblies
- Weight slip

**SNOWPLOW:**

**Monroe Model MPPJ45R12-ISTT-PARA-LIFT**



- Moldboard sheet shall be 3/8" thickness of UHMW polymer with built-in integral shield
- Polymer sheet shall be bolted at the top of the moldboard to a 2" x 3" x 3/8" top moldboard angle
- Two 3" x 10" power reverse cylinders with cushion valve
- 5/8" x 8" AASHO C1080 center punched cutting edge
- Ten 1/2" solid one-piece flame cut vertical ribs
- 4" x 4" x 3/4" bottom moldboard angle
- Six 3/4" adjustable torsion springs
- Parallelogram style lift
- Main push tube is to be 4" x 4" x 4/8" A36 seamless square wall tubing
- Fabricated A36 steel 3-1/2" x 3-1/2" x 1/2" semi-circle
- Moldboard and frame to be 100% continuously welded
- The moldboard height of the plow is 45 inches
- The overall width of the plow is 12 feet
- Rubber snow deflector
- Orange poly sight markers
- Snow wheel mounting brackets

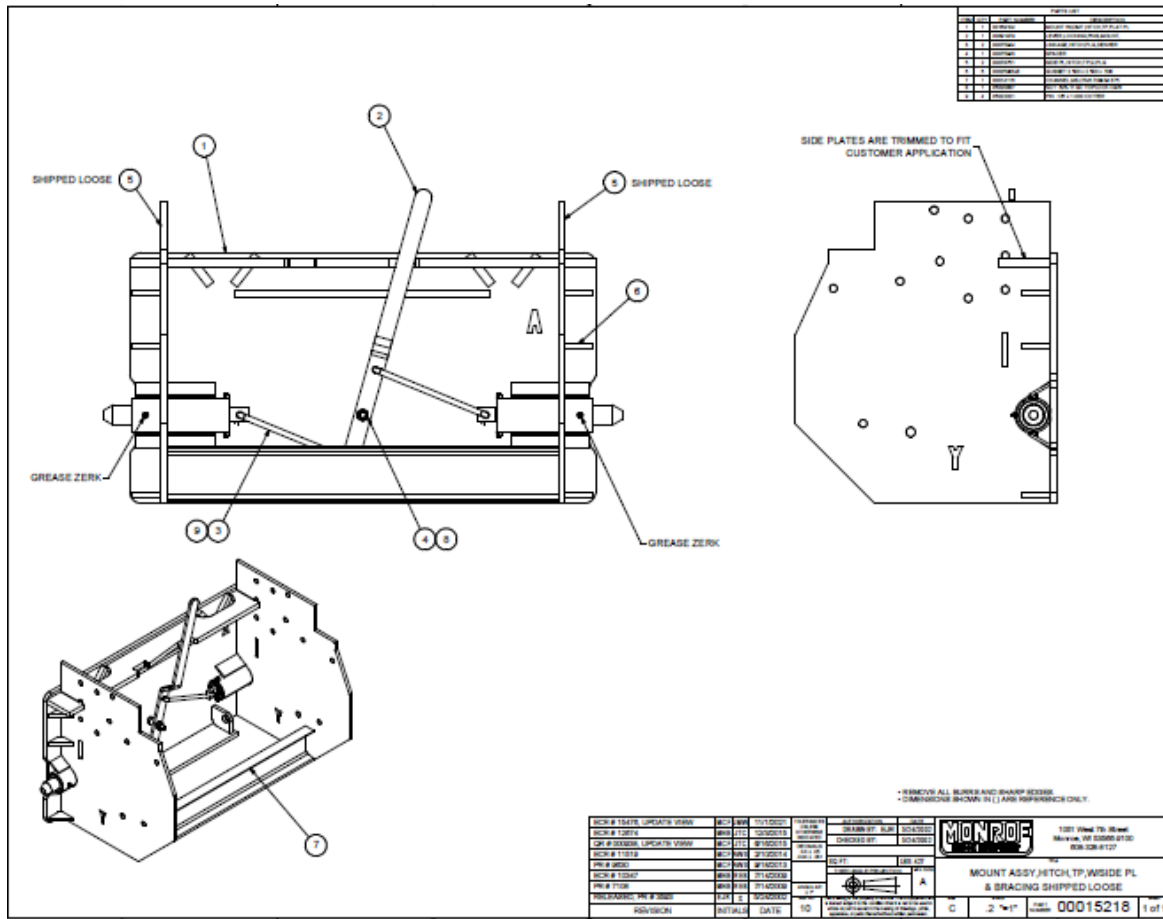


**Description of Work**

**HITCH ASSEMBLY:**

**PLOW & TRUCK HITCH:**

- Parallelogram lift frame
- Flat Plate Parallelogram style
- Cheek plates



**Description of Work**

**LIGHTING:**

Furnish and install the following Whelen LED DOT lighting system including:

**COMBO UNIT :**

**REAR LEG MOUNT Whelen "400" series lights as follows:**

- -1- CLEAR back up
- -1- RED stop-tail-turn
- Stainless steel twin light mount



**WHELEN STROBE LIGHTS:**

**Strobe Lights:**

- Three (3) AMBER 500 series LED lights recessed in the STREETSIDE of the cab shield (1) front, (1) side & (1) rear
- Three (3) BLUE 500 series LED lights recessed in the CURBSIDE of the cab shield (1) front, (1) side & (1) rear
- One (1) AMBER 500 series LED light recessed in the STREETSIDE rear pillar
- One (1) AMBER 500 series LED light recessed in the CURBSIDE rear pillar



**Description of Work**

**Responder Light Bar:**

- One (1) Responder series light bar install on raised stainless steel mount in the center of the frame mounted stainless steel cab shield assembly



**SWITCHING:**

**Lighting is to be controlled by Monroe In-Power switch box mounted to Force America 6100 console**

- FRONT Responder light bar is to be controlled by one (1) switch
- REAR amber strobes are to be controlled by one (1) switch
- BLUE strobe lights are to be controlled by (1) switch
- FUTURE Wing Strobe are to be controlled by (1) switch (Switch is to be included for possible future use)
- FUTURE Wing work light is to be controlled from one (1) switch (Switch is to be included for possible future use)
- Spinner work light is to be controlled from one (1) switch
- Plow lights are to be controlled by Chassis OEM "snowplow light" switch

**SNOWPLOW LIGHTS:**

- "ECCO " LED style snowplow lights including:
- Integrated Snow Shield Tech to prevent snow and ice build up
- 100 % waterproof housing
- Fender mounted Stainless steel snowplow light mounts

**V-BOX LIGHTING:**

**Integrated TOVAR light bar populated with:**

- One (1) oval LED AMBER strobe
- One (1) oval LED BLUE strobe
- Two (2) oval LED RED stop/tail/turn lights
- Three (3) center LED RED 3-ID lights
- Four (4) LED RED clearance lights

**V-BOX SPINNER LIGHT:**

- One (1) clear LED spinner light located on the spinner chute assembly actuated from a switch on the Force America console

**LIGHTING MISCELLANEOUS:**

- Whelen linear DOT LED lighting system ran from the cab of the truck to each light without the use of a junction box. terminating in truck cab within OJW "Power-Tower"
- All light connections will have Deutsch connections
- OJW wiring diagram for Power Tower



O.J. Watson Company, Inc.  
5335 Franklin Street  
Denver, Colorado 80216  
303-295-2885 or 800-332-2124  
Fax: 303-296-8049  
www.ojwatson.com

## Quotation

Page 10 of 18

### Description of Work

*Furnish and install one (1) Force America FRONT CRANK drive system including:*

#### **PUMP ASSEMBLY:**

**1060656 CFG-999061 Front Crank Drive Pump including:**

- 5.98 cid- CCW-1-1/4" keyed
- 4 Blt C-L.S. - 2-1/2" x 1" SFP side - comp 2380 psi / Max 3800 psi
- Flange kit
- 622AK-L-CFG
- 1061514 Driveline kit with 479 and 329 flange yokes and 1-1/4" C.f - FAD
- FAD-479x329x333x20
- 1012044 Assy- pump shut off valve with relief
- 9172H002

#### **HOSES AND FITTINGS AND MISCELLANEOUS:**

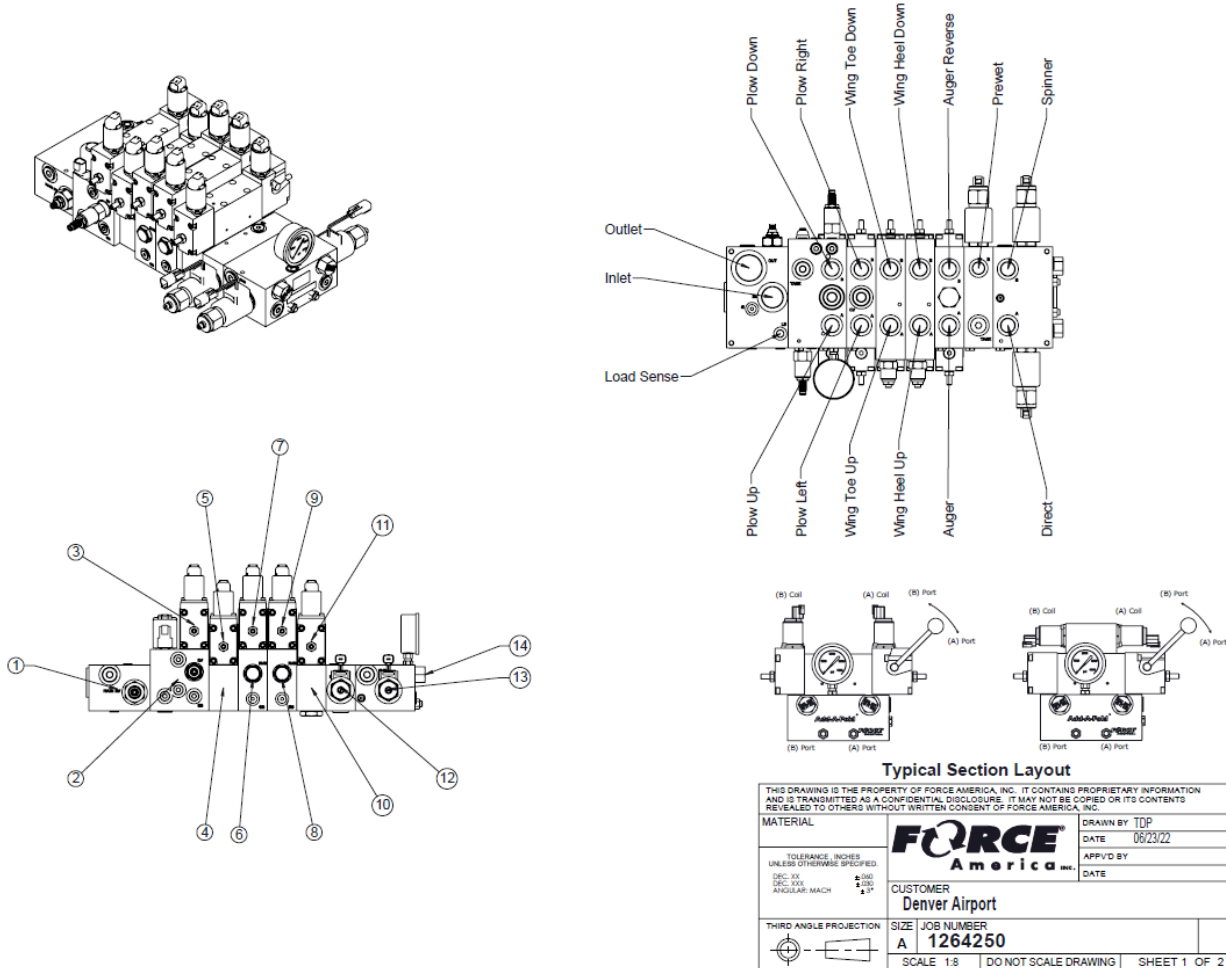
- All required plumbing
- Front STREETSIDE mount Stucchi Coupler for plow with Parallelogram mount
- CURBSIDE Mid-mount Stucchi Coupler for wing
- Hydraulic oil

#### **VALVE:**

**AAF-PK4RV-4-4CB-4CB-F4A-2P-2D2S-VT Valve Details:**

- FORCE America Model Add-A-Fold
- 3000 PSI Max
- Double Acting Plow Lift w/Integrated Power float and 500 PSI downside relief
- Double Acting Plow Angle
- **Double Acting Wing Toe with integrated counterbalance valve (Included for possible future use)**
- **Double Acting Wing Heel with integrated counterbalance valve (Included for possible future use)**
- 0-14 GPM Conveyor forward and reverse
- 0-7GPM prewet Liquid
- 0-14GPM direct liquid
- 0-7 GPM spinner
- Includes JIC Fittings \*F-A KIT-CFG

**Description of Work**



Inlet		(1)- 1012050 9191A003		Main Relief Setting	3000 psi	End Cover	NA		Stud Kit		(14)- 1057314 9203A008		
Section	Manifold	1st Sandwich	2nd Sandwich	Valve Section	Pilot	A Port Function	A Port Relief Setting	A Port Limit	A Port Req. Flow	B Port Function	B Port Relief Setting	B Port Limit	B Port Req. Flow
1	(2)- 1192003 9937A261_12H			(3)- 1175573 VDM_10A_A0_021_M_C_S_A_1 2H		Plow Up				Plow Down	500 psi		
3	(4)- 1012076 9197A000			(5)- 1175573 VDM_10A_A0_021_M_C_S_A_1 2H		Plow Left				Plow Right			
4	(6)- 1174997 9999A250_30			(7)- 1175573 VDM_10A_A0_021_M_C_S_A_1 2H		Wing Toe Up				Wing Toe Down			
5	(8)- 1174997 9999A250_30			(9)- 1175573 VDM_10A_A0_021_M_C_S_A_1 2H		Wing Heel Up				Wing Heel Down			
6	(10)- 1012082 9199A003			(11)- 1175577 VDM_10A_C0_014_M_C_S_A_1 12H		Auger				Auger Reverse			
7	(12)- 1177382 9939A001_12H					Plug				Prewet			
8	(13)- 1177370 9992A221_12H					Direct				Spinner			

Description of Work



**ELECTRIC CONTROLS:**

***MPJC-6100-3-GEN5-ULTRA - DIA W/2FWING including:***

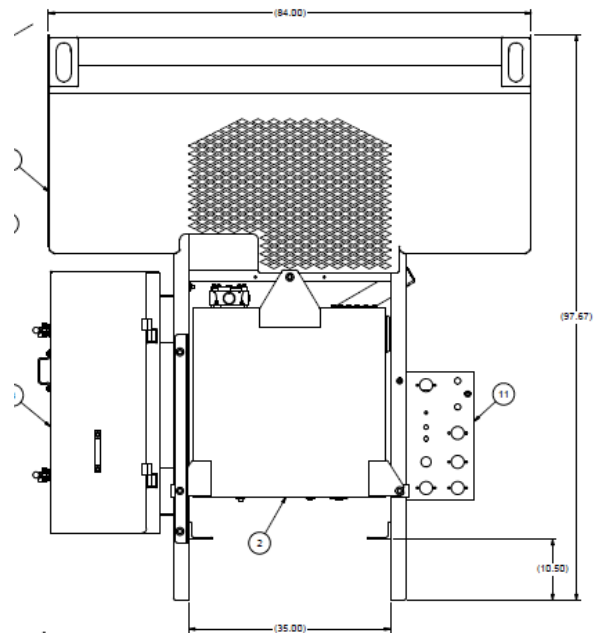
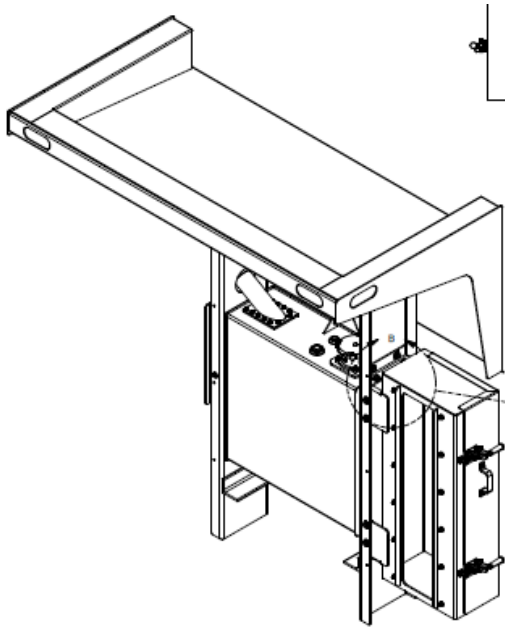
- Floor mounted Ultra Controller
- Integrated 6100 Can Bus Spreader Control System
- Dual Axis Joy-Stick for Plow control with pushbutton standby for Spreader
- Dual axis Joy-Stick for Wing Control with push button for Spreader Blast
- Multi-Lane Granular, Prewet and Direct Liquid
- Application module and Harnessing
- Truck mount ISO Bus kit
- Low oil override module
- M12 flow meter sensor



**Description of Work**

**DIA AIR-SIDE CAB SHIELD:**

- 201 stainless steel construction
- Frame mounted cab shield
- **Integrated oil reservoir**
- **Integrated hydraulic valve enclosure**
- Six (6) oval cutouts to accommodate Whelen 500 series grommet mounted LED strobe lights



Factory Install at Monroe Truck Equipment  
Completed delivery

**Total BASE Price NOT Including WING Option:** **\$297,335.00**  
**X 5 units**  
**1,486,675.00**



**O.J. Watson Company, Inc.**  
 5335 Franklin Street  
 Denver, Colorado 80216  
 303-295-2885 or 800-332-2124  
 Fax: 303-296-8049  
 www.ojwatson.com

## Quotation

Page 14 of 18

### Contract Pricing:

Item	Amount	Page No.
Monroe MSV1808462304SS Super Combo V-Box w/1300 gallon liquid – 304 stainless steel –	\$138,450.00	-11-
10 % Discount	<del>\$-13,845.00</del>	-11-
Cab shield -201- stainless steel with lighting provision / 45 gallon tank	\$6,100.00	-53-
PPI price increase @ 41.7 %	\$2,543.70	-10-
ADD 15% for 304 stainless steel construction in lieu of 201 due to market availability	\$1,297.00	Required
Back of cab valve enclosure -201- stainless steel –	\$3,281.00	-53-
PPI price increase @ 41.7 %	\$1,368.00	-10-
ADD 15% for 304 stainless steel construction in lieu of 201 due to market availability	\$697.35	Required
DIA- MPPJ45R12-ISTT-PARA-LIFT 12' plow kit complete	\$42,170.00	-11-
10% Discount	<del>\$-4,217.00</del>	-11-
Electric Tarp system	\$2,667.00	-27-
PPI price increase @ 41.7 %	\$1,112.00	-10-
Force America DIA Pena Blvd Hydraulic system with electric controls & Wing Valve	\$44,875.00	-11-
20 % Discount	<del>\$-8,975.00</del>	-11-
Whelen Responder Light Bar	\$695.00	-11-
10 % Discount	<del>\$-69.50</del>	-11-
Heated LED plow light kit	\$1,450.00	-11-
10 % Discount	<del>\$-145.00</del>	-11-
Whelen 400 series lights (4) @ 325.00	\$1,300.00	-65-
PPI price increase @ 41.7 %	\$542.10	-10-
Whelen stainless steel light brackets 2 @ 497.00	\$994.00	-10-
10 % discount	<del>\$-99.40</del>	-10-
Whelen 500 series lights (6) @ 325.00	\$1,950.00	-65-
PPI price increase @ 41.7 %	\$813.15	-10-
Work /Spinner Light	\$139.50	-11-
10 % discount	<del>\$-13.95</del>	-11-
Monroe Super Combo Tovar Light Bar – DIA –	\$1,415.00	-11-
10 % Discount	<del>\$-141.50</del>	-11-
Monroe In-Power switch pack for lighting and tarp	\$615.00	-11-
10 % Discount	<del>\$-61.50</del>	-11-
Miscellaneous build components including: hoses, fittings, oil, wiring , paint	\$8,378.05	Required
Complete package installation	\$62,050.00	-11-

#### Total per unit Pena Package price

**\$297,335.00**

#### OPTION WING KIT PRICING: -

Monroe Mid-Mount Wing Kit	\$23,785.00	-11-
10 % Discount	<del>\$-2,378.50</del>	-11-
Monroe Wing Laser Kit	\$3,965.00	-11-
10 % Discount	<del>\$-396.50</del>	-11-
Force America Wing Camera	\$625.00	-11-
20 % Discount	<del>\$-125.00</del>	-11-
Wing Light	\$139.50	-11-
10 % Discount	<del>\$-13.95</del>	-11-
Complete Wing Package Installation	\$9,000.00	-11-
Miscellaneous build components including: hoses, fittings, oil, wiring , paint	\$924.45	Required

#### Total per unit option Wing Kit Price

**\$35,525.00**

Item	Amount	Page No.
<b>Optional Items:</b>		
	<b>Amount</b>	<b>Accepted</b>

**MID-MOUNT WING: \*\*\*FACTORY INSTALLED PRICING STRUCTURE\*\*\***

**\$35,525.00**

**Yes / No**



**Monroe 9', double function, straight, patrol wing**

- 31" high X 3/16" steel moldboard.
- 4"X4" bottom angle.
- 1/2" horizontal ribs.
- Standard 100% welded.
- Shot blasted and powder coated orange.
- Powder coated black hardware.
- Standard one-piece .625X8" cutting edge.
- Para-Glide front post.
- Standard dual push arm assembly.
- Mild steel pipe bracing.
- Rubber snow deflector.

**NOTE:**

- Wing control to be by a single Joystick with one function forward to lower and one function back to raise.

**COUPLER:**

- Stucchi coupler from wing to truck side hydraulics

Item	Amount	Page No.
------	--------	----------

**WING CAMERA:**

- Force America camera kit for wing displayed in 6100 controller. Camera is to be mounted at best possible location,



**WING WORK LIGHT:**

- One (1) wing work/spot light installed on the wing laser bracket facing down toward wing.



**WING LASER:**

- Laser Line Mfg. model GL3000PMC Wing Laser Guide Light, to be mounted beneath the Combo cab shield CURBSIDE.





O.J. Watson Company, Inc.  
5335 Franklin Street  
Denver, Colorado 80216  
303-295-2885 or 800-332-2124  
Fax: 303-296-8049  
www.ojwatson.com

## Quotation

Page 17 of 18

Item	Amount	Page No.
------	--------	----------

### GREEN WING STROBE:

#### *Air-Strip GREEN LED wing light kit including:*

- Air-blade outside blade strip
- Air-strip 16" x 6" moldboard square
- Illuminated Guide wand



### WING HYDRAULIC NOTE:

- Wing hydraulic valve sections are included in base package price
- Wing Controls are included in base package price



O.J. Watson Company, Inc.  
5335 Franklin Street  
Denver, Colorado 80216  
303-295-2885 or 800-332-2124  
Fax: 303-296-8049  
www.ojwatson.com

## Quotation

Page 18 of 18

### **Temporary Repricing & Surcharge Disclaimer:**

It is with regret that due to the extreme instability of current market costs, all pricing presented will be valid for thirty (30) days from quotation date. Any quotations extending beyond the thirty (30) day period will be subject to costing evaluation and possible repricing.

Additionally, an accepted quotation involving deliveries extending beyond ninety (90) days will be subject to costing evaluation at time of delivery and may be subject to a surcharge of up to, but not exceeding 12% of quoted price.

We greatly appreciate your business and count on your understanding through these unprecedented times. **We look forward to returning to our normal pricing terms as quickly as market conditions allow.**

- ***All pricing is good for -30- days from date of quotation***
- All quotes are F.O.B. Denver unless otherwise stated.
- Quotes are subject to all applicable sales and use taxes including F.R.E.T.
- Open Account Terms are Net 30 upon delivery.
- Cash Account Term is payment at time of delivery (cash/check/credit card) and is subject to a 50% deposit requirement upon initial order.
- All credit card transactions over \$7,000.00 will be subject to a 3% processing fee.
- Carry Vehicle is NOT included in pricing unless specifically called out under Quoted Items.
- The contents of this quote are confidential and not intended for distribution. It is strictly forbidden to share this quote with any third party without written consent from O.J. Watson Equipment.

Accepted

By: \_\_\_\_\_ Quoted By: \_\_\_\_\_ Mark Eckrich FOR Dick Eckrich

Date: \_\_\_\_\_ Date: \_\_\_\_\_ 08.26.2022