



NATIONAL WESTERN CENTER

Denver City Council | Budget & Policy Committee

January 9, 2023



MAYOR'S OFFICE OF THE NATIONAL WESTERN CENTER



AGENDA

- Introductions
- Campus Construction Updates and Next Steps
- National Western Center Authority Updates



ROLES AND RESPONSIBILITIES



Mayor's Office of the National Western Center is responsible for construction of the campus, holds the lease and is the principal landowner.



The NWC Authority is responsible for programming and maintaining the campus for the next 100 years.



The Western Stock Show Association is building their own headquarters, the Legacy Building, and will continue to host the Stock Show, Denver County Fair and All-Star Rodeo.



The CSU Spur campus is made up of 3 buildings focused on food, water and health and will be a hub for research related to important world issues and be open to the public as a place for experiential education.

1. RTD Transit Station
2. Brighton Blvd. – 47th to Race Court
3. South Platte Riverfront
4. New National Western Drive
5. Stockyards Event Center
6. The Yards Multi-Use Space
7. Pedestrian Bridge
8. New Bridges Near 48th & 51st Avenues
9. Livestock Center
10. Equestrian Center
11. District energy system's central utility plant (CUP)
12. CSU Spur: Vida (health)
13. CSU Spur: Hydro (water)
14. CSU Spur: Terra (food)
15. Maintenance & Operations Facility
16. DRIR Rail Corridor
17. WSSA Legacy Building HQ
18. Campus-related transit-oriented development (TOD)
19. Arena
20. Expo Hall
21. 1909 Building rehabilitation
22. Supporting development



CONSTRUCTION LOOKING BACK

December 2020

Aerial image from two years ago



CONSTRUCTION LOOKING BACK

December 2021

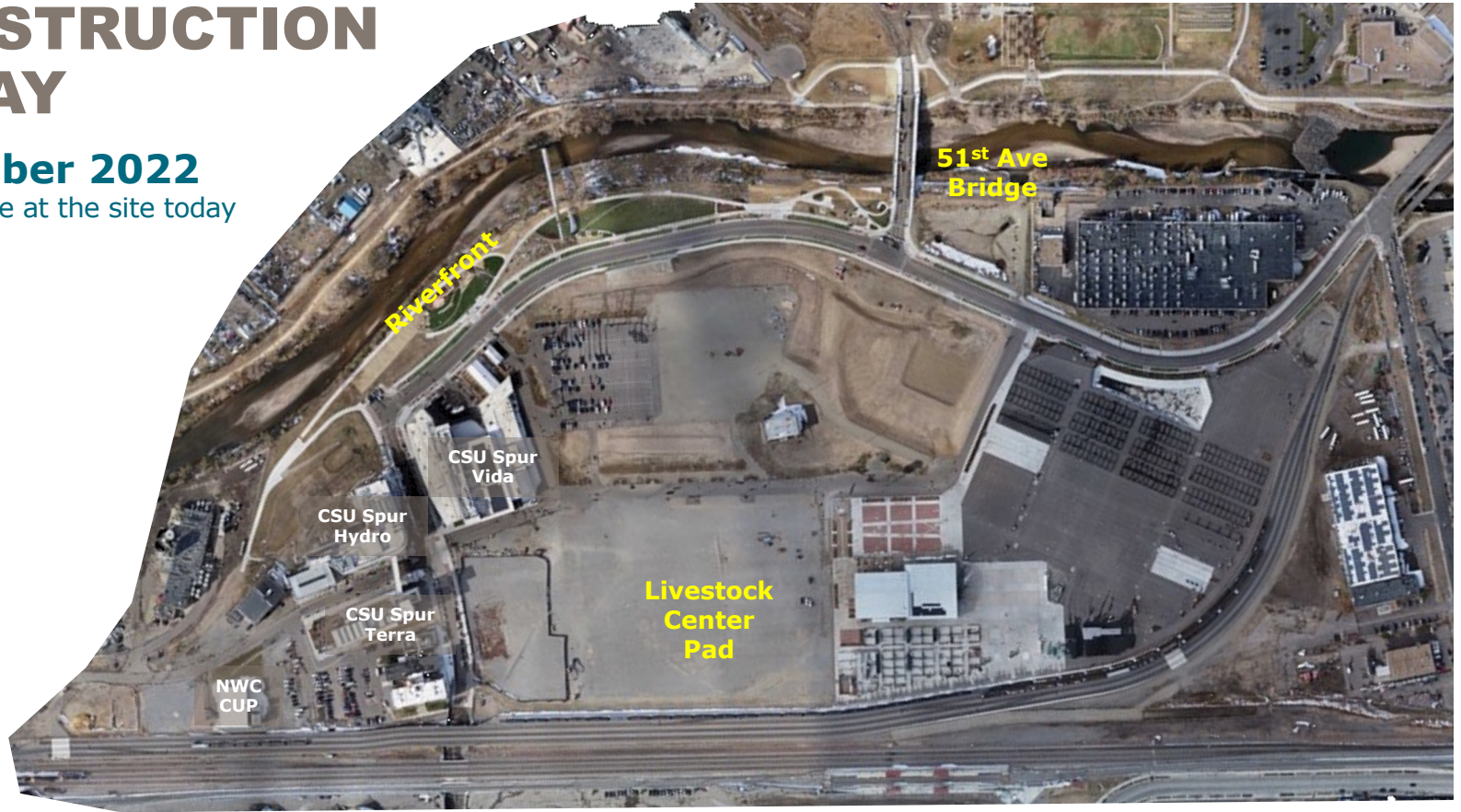
Aerial image one year ago



CONSTRUCTION TODAY

December 2022

Aerial image at the site today



PHASE 1 & 2 PROGRAM STATUS

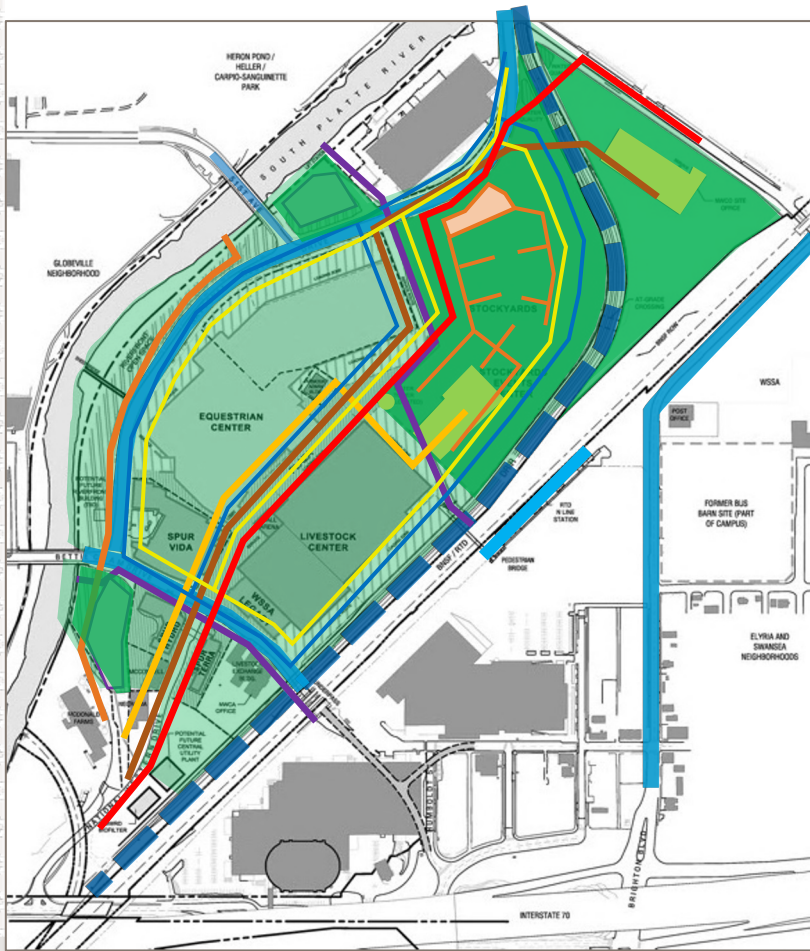
WORK COMPLETED

- Cumulative Work to Date

- Sitewide Land Preparation
- Sitewide Utilities
- Major Drainage and Water Quality Facilities
- Maintenance and Operations Building
- Denver Rock Island Railroad Relocation
- Stockyards Event Center
- Multi-Use Stockyards
- Multimodal Facilities (roads and bridges)
- Public Art

- Work Completed by Others:

- RTD North Metro Station
- CSU Spur Vida, Terra and Hydro
- Central Utility Plant





Aerial Photograph Dated
December 23, 2021



Aerial Photograph Dated
December 6, 2022



Photograph Dated
October 5, 2022





Aerial Photograph Dated
December 23, 2021



Aerial Photograph Dated
December 6, 2022

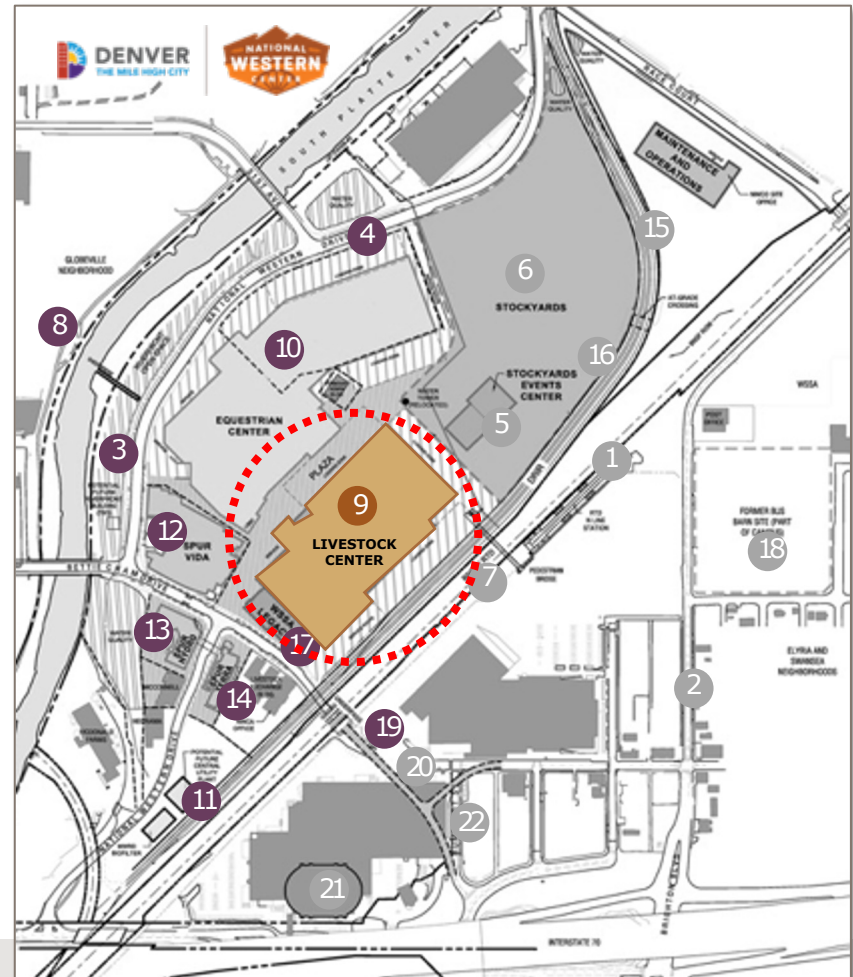
51ST AVE BRIDGE

PEOPLE'S BRIDGE OF THE SUN



NWC CAMPUS PLAN

1. RTD Transit Station
2. Brighton Blvd. – 47th to Race Court
3. South Platte Riverfront
4. New National Western Drive
5. Stockyards Event Center
6. The Yards Multi-Use Space
7. Pedestrian Bridge
8. New Bridges Near 48th & 51st Avenues
9. Livestock Center
10. Equestrian Center
11. District energy system's central utility plant (CUP)
12. CSU Spur: Vida (health)
13. CSU Spur: Hydro (water)
14. CSU Spur: Terra (food)
15. Maintenance & Operations Facility
16. DRIR Rail Corridor
17. WSSA Legacy Building HQ
18. Campus-related transit-oriented development (TOD)
19. Arena
20. Expo Hall
21. 1909 Building rehabilitation
22. Supporting development



LIVESTOCK CENTER

Designed to include flexible, year-round space that will support a wide variety of activities, such as: community events, sporting events, graduations, concerts, livestock auctions, trade shows, banquets, and other uses.



CONSTRUCTION STATUS



NATIONAL WESTERN CENTER - PHASES 1 & 2

Program Status Report

Q3-2022

Attachment

QUARTERLY STATUS	
Overview:	Horizontal:
- HSSC: 0 recordable incidents this quarter	- Design in-progress: campus IT, pedestrian bridge / mobility
- NWC Program schedule - SPI 1.00 *	- Procurement in-progress: campus IT
- NWC Program budget - CPI 1.00 *	- Construction in-progress: National Western Drive, Utilities, 51st Ave Bridge and Art, Riverfront Open Space and Art
	- Completed: 501 Ave Bridge
Program-Wide:	Vertical:
- Continued horizontal/vertical design, procurements	- SYEC: continued punchlist, FH&E and transition for year round events
- Continued regulatory planning and permitting	- Stockyards: continued punchlist, FH&E and transition for year round events
- Continued Public Art process	- Equestrian Center: in design development *
- CM/GC and management contracts approved	- Livestock Center: in design and procurement; construction start TBD *
* Continuing to assess potential COVID-19, market impacts, design options, costing, recovery opportunities on program / schedule	

MAJOR CONTRACTS AND PROCUREMENT STATUS				
	Vendor	Description	Contracted Date	Amount
Contracted	Wilson & Co	Brighton Blvd - Design	Dec 2016	\$ 1,050,044
	Moore Iacofano Goldman (MIG)	Campus Placemaking	Jun 2017	\$ 5,000,000 *
	Saunders Construction LLC	Demolition and Abatement	Sep 2017	\$ 18,000,000 *
	Kiewit Infrastructure Co	Brighton Blvd - Construction	Dec 2017	\$ 12,604,322
	Merrick & Company	Horizontal Design	Apr 2018	\$ 25,000,000 *
	Wilson & Co	DRR Rail Consolidation	Apr 2018	\$ 2,190,687
	Rensel Phelps Construction	Horizontal Integrated Construction (HIC)	Jun 2018	\$ 275,000,000 *
	Short, Elliot and Hendrickson (S.E.H.)	Maint. & Ops Facility - Design	Sep 2018	\$ 776,758
	HRS, Inc.	Stockyards Event Cntr / Stockyards - Design	Nov 2018	\$ 3,659,443
	G.H. Phipps	Maint. & Ops Facility - Precon	Dec 2018	\$ 15,000
	Adolfson & Peterson	Stockyard Event Cntr / Stockyards - Precon	Mar 2019	\$ 37,500
	Populous	Equestrian Center / Parking Garage - Design	May 2019	\$ 10,813,281
	G.H. Phipps	Maint. & Ops Facility - CM/GC	Dec 2019	\$ 5,335,422
	Adolfson & Peterson	Stockyard Event Cntr / Stockyards - CM/GC	Dec 2019	\$ 8,529,490
	Whiting - Turner	Equestrian Center / Parking Garage - Precon	Dec 2019	\$ 2,443,650
	Populous	Livestock Center - Design	Feb 2020	\$ 10,557,527
	Whiting - Turner	Livestock Center - Precon	Oct 2020	\$ 2,016,700
	Whiting - Turner	Livestock Center - CM/GC	Sep 2022	\$ 204,751,561
Future	Whiting - Turner	Equestrian Center / Parking Garage - CM/GC	TBD **	TBD
* Capacity ** Continuing to assess potential COVID-19, market impacts, design options, costing, recovery opportunities on program/schedule				

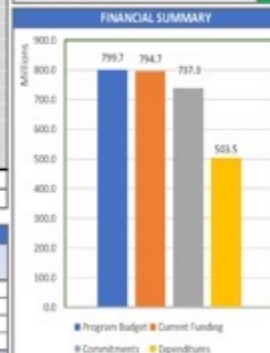
KEY PERFORMANCE INDICATORS	
Description	
Health, Safety, Security, and Environment	
Cost	
Schedule	
Design	
Community	
ReNEWw	
Concurrent Operations	

FINANCIAL SUMMARY

Category	Program Budget	Current Funding	Commitments	Dependitures
Planning and Design Studies	799.7	794.7	737.3	503.5
Horizontal	397.0	377.3	367.8	367.8
Vertical	333.9	308.6	87.1	87.1

Legend: ■ Program Budget ■ Current Funding ■ Commitments ■ Dependitures

BUDGET, COMMITMENTS AND COST				PROGRESS/PERFORMANCE	
Portfolio	Program To Date			Percent Complete	SPI
	Budget	Commitment	Cost		
Planning and Design Studies	4,793,446	4,793,445	4,793,445	100.0%	1.00
Horizontal	397,027,623	377,327,911	367,754,949	93.9%	1.00
Vertical	333,893,902	308,550,177	87,136,283	26.3%	1.00
Program Wide	63,971,470	46,653,258	43,837,658	68.5%	1.00
Total Program	799,686,441	737,324,792	503,682,334	63.7%	1.00
Commitment = Contracted obligations and expenditures					



LOOKAHEAD AND COUNCIL ACTIONS

Next 3 Months

- Livestock Construction Start – After Stock Show 2023
- Council Actions
 - Horizontal Design Contract Amendment – time extension
 - Horizontal Construction Contract Amendment – time extension
 - Street Renaming Ordinance
 - WSSA Legacy Building Agreement
- Design, Estimating + Construction Phasing for Remaining Assets
 - Pedestrian Bridge, Bettie Cram Bridge, Equestrian Center

Next 6-12 Months

- Livestock Construction Ongoing – Deep Foundations, Slab on Grade, Steel Erection
- Council Actions
 - Xcel Energy
 - Plat
- Design, Estimating + Construction Phasing for Remaining Assets
 - Pedestrian Bridge, Bettie Cram Bridge, Equestrian Center
- Ongoing Campus Coordination
 - WSSA, Authority, and CSU Programming / Concurrent Operations
 - Future Phases





STOCKYARDS EVENT CENTER



STOCKYARDS – 2022 STOCK SHOW



2022 EVENT HIGHLIGHTS

- Stock Show
- Jurassic World: The Exhibition
- AEG Concert
- Taco Festival
- Museum of Contemporary Arts Gala
- Coloween
- Regenerate Conference
- Sugar Plum Bazaar
- Brunch Fest – Munchies & Mimosas
- GES Climate & Environmental Summit
- Tiny Tots Christmas

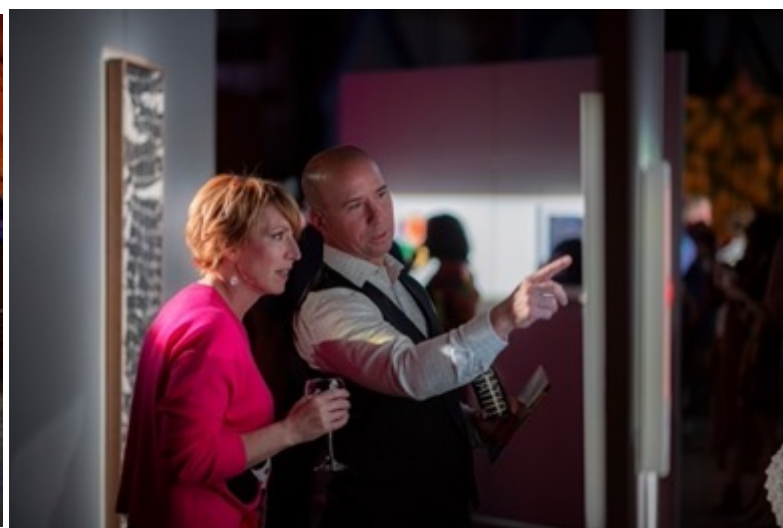


JURASSIC WORLD: THE EXHIBITION





MCA GALA







COLOWEEN



STOCKYARDS – 2022 AEG CONCERT





HONORING OUR PAST

LANDMARK DESIGNATION – LIVESTOCK EXCHANGE BUILDING



COMMUNITY OUTREACH & ENGAGEMENT



STAY IN THE KNOW
— WITH THE —
NATIONAL
WESTERN CENTER

TEXT
NWCENTER
TO
21000

FOR UPDATES ON UPCOMING
EVENTS, MEETINGS AND WAYS
TO GET INVOLVED

NATIONAL
WESTERN
CENTER



MANTÉNGASE AL TANTO DE
NOVEDADES DE MANERA ÚNICA
— CON EL —
CENTRO
NATIONAL WESTERN

ENVÍE EL TEXTO
NWCESPANOL
AL
21000

PARA RECIBIR ACTUALIZACIONES DE
REUNIONES Y EVENTOS PRÓXIMOS
Y FORMAS DE INVOLUCRARSE

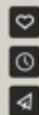
NATIONAL
WESTERN
CENTER



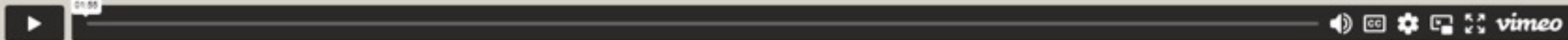


NWC 2023 Update - FINAL

Denver Promo Studios



[Click Here to Play Video](#)



QUARTERLY STATUS

Overview:	Horizontal:
- HSSE: 0 recordable incidents this quarter	- Design in-progress: campus IT, pedestrian bridge / mobility
- NWC Program schedule - SPI 1.00 *	- Procurement in-progress: campus IT
- NWC Program budget - CPI 1.00 *	- Construction in-progress: National Western Drive, Utilities, 51st Ave Bridge and Art, Riverfront Open Space and Art
	- Completed: 51st Ave Bridge
Program-Wide:	Vertical:
- Continued horizontal/vertical design, procurements	- SYEC: continued punchlist, FF&E and transition for year-round events
- Continued regulatory planning and permitting	- Stockyards: continued punchlist, FF&E and transition for year-round events
- Continued Public Art process	- Equestrian Center: in design development *
- CM/GC and management contracts approved	- Livestock Center: in design and procurement; construction start TBD *
* Continuing to assess potential COVID-19, market impacts, design options, costing, recovery opportunities on program / schedule	

51st Avenue Bridge - Public Art



MAJOR CONTRACTS AND PROCUREMENT STATUS

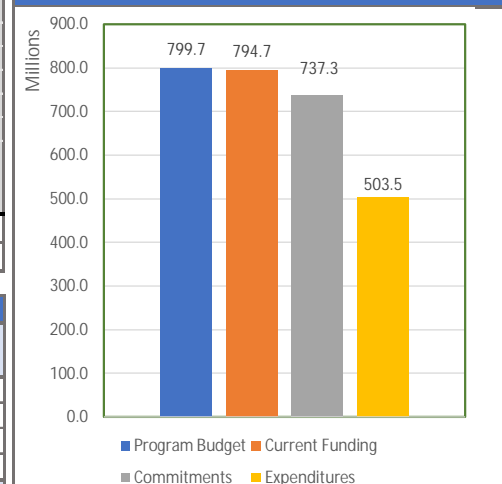
	Vendor	Description	Contracted Date	Amount
Contracted	Wilson & Co	Brighton Blvd - Design	Dec 2016	\$ 1,050,044
	Moore Iacofano Goltsman (MIG)	Campus Placemaking	Jun 2017	\$ 5,000,000 *
	Saunders Construction LLC	Demolition and Abatement	Sep 2017	\$ 18,000,000 *
	Kiewit Infrastructure Co	Brighton Blvd - Construction	Dec 2017	\$ 12,604,322
	Merrick & Company	Horizontal Design	Apr 2018	\$ 25,000,000 *
	Wilson & Co	DRIR Rail Consolidation	Apr 2018	\$ 2,190,687
	Hensel Phelps Construction	Horizontal Integrated Construction (HIC)	Jun 2018	\$ 275,000,000 *
	Short, Elliot and Hendrickson (S.E.H.)	Maint. & Ops Facility - Design	Sep 2018	\$ 776,758
	HKS, Inc.	Stockyards Event Cntr / Stockyards - Design	Nov 2018	\$ 3,659,443
	G.H. Phipps	Maint. & Ops Facility - Precon	Dec 2018	\$ 15,000
	Adolfson & Peterson	Stockyard Event Cntr / Stockyards - Precon	Mar 2019	\$ 37,500
	Populous	Equestrian Center / Parking Garage - Design	May 2019	\$ 10,831,281
	G.H. Phipps	Maint. & Ops Facility - CM/GC	Dec 2019	\$ 5,335,422
	Adolfson & Peterson	Stockyard Event Cntr / Stockyards - CM/GC	Dec 2019	\$ 8,529,490
	Whiting - Turner	Equestrian Center / Parking Garage - Precon	Dec 2019	\$ 2,443,650
	Populous	Livestock Center - Design	Feb 2020	\$ 10,557,527
	Whiting - Turner	Livestock Center - Precon	Oct 2020	\$ 2,016,700
	Whiting - Turner	Livestock Center - CM/GC	Sep 2022	\$ 204,751,561
Future	Whiting - Turner	Equestrian Center / Parking Garage - CM/GC	TBD **	TBD

* Capacity ** Continuing to assess potential COVID-19, market impacts, design options, costing, recovery opportunities on program/schedule

KEY PERFORMANCE INDICATORS

Description	
Health, Safety, Security, and Environment	
Cost	
Schedule	
Design	
Community	
ReNEWW	
Concurrent Operations	

FINANCIAL SUMMARY



BUDGET, COMMITMENTS AND COST

Portfolio	Program To Date			PROGRESS/PERFORMANCE	
	Budget	Commitment	Cost	Percent Complete	SPI
Planning and Design Studies	4,793,446	4,793,445	4,793,445	100.0%	1.00
Horizontal	397,027,623	377,327,911	367,714,949	93.9%	1.00
Vertical	333,893,902	308,550,177	87,136,283	26.3%	1.00
Program Wide	63,971,470	46,653,258	43,837,658	68.5%	1.00
Total Program	799,686,441	737,324,792	503,482,334	63.7%	1.00

Commitment = Contracted obligations and expenditures

KEY SCHEDULE MILESTONES

Activity/ Milestone	Completion Date *
Program Substantial Completion	TBD
DRIR Rail Consolidation Complete	02/23/21 A
Delgany Interceptor Construction Complete	04/30/21 A
SYEC, Bison Pens and Plaza Substantial Completion	12/15/21 A
Stockyards Substantial Completion	12/31/21 A
Equestrian Center Substantial Completion	TBD
Livestock Center Substantial Completion	TBD
Pedestrian Bridge Substantial Completion	TBD
51st Ave Bridge Substantial Completion	09/02/22 A
Bettie Cram Drive Bridge Substantial Completion	TBD
CSU Animal Health Building Pad Ready	03/09/20 A
CSU Water Resources Center Pad Ready	09/14/20 A
CSU Center Pad Ready	09/14/20 A
WSSA Legacy Building Pad Ready	TBD

Gray shading = Complete A = Actual Date

* Continuing to assess potential COVID-19, market impacts, design options, costing, recovery opportunities on program/schedule

51st Avenue Bridge, Riverfront and National Western Drive Looking South

