



**DENVER**  
THE MILE HIGH CITY

# Denver Parks & Recreation

Proposed Park Designations  
8<sup>th</sup> Round

FOR CITY SERVICES VISIT | CALL  
**DenverGov.org** | **311**

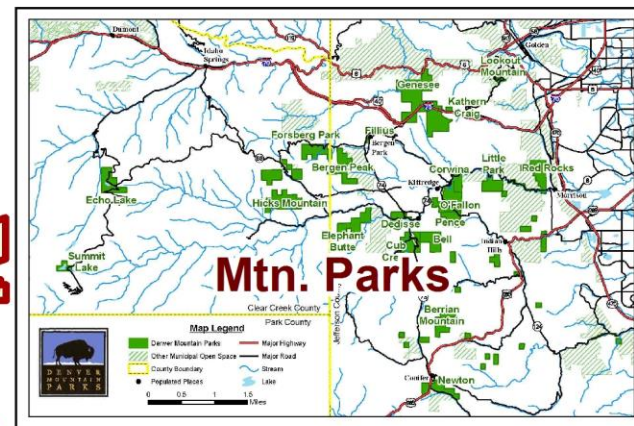
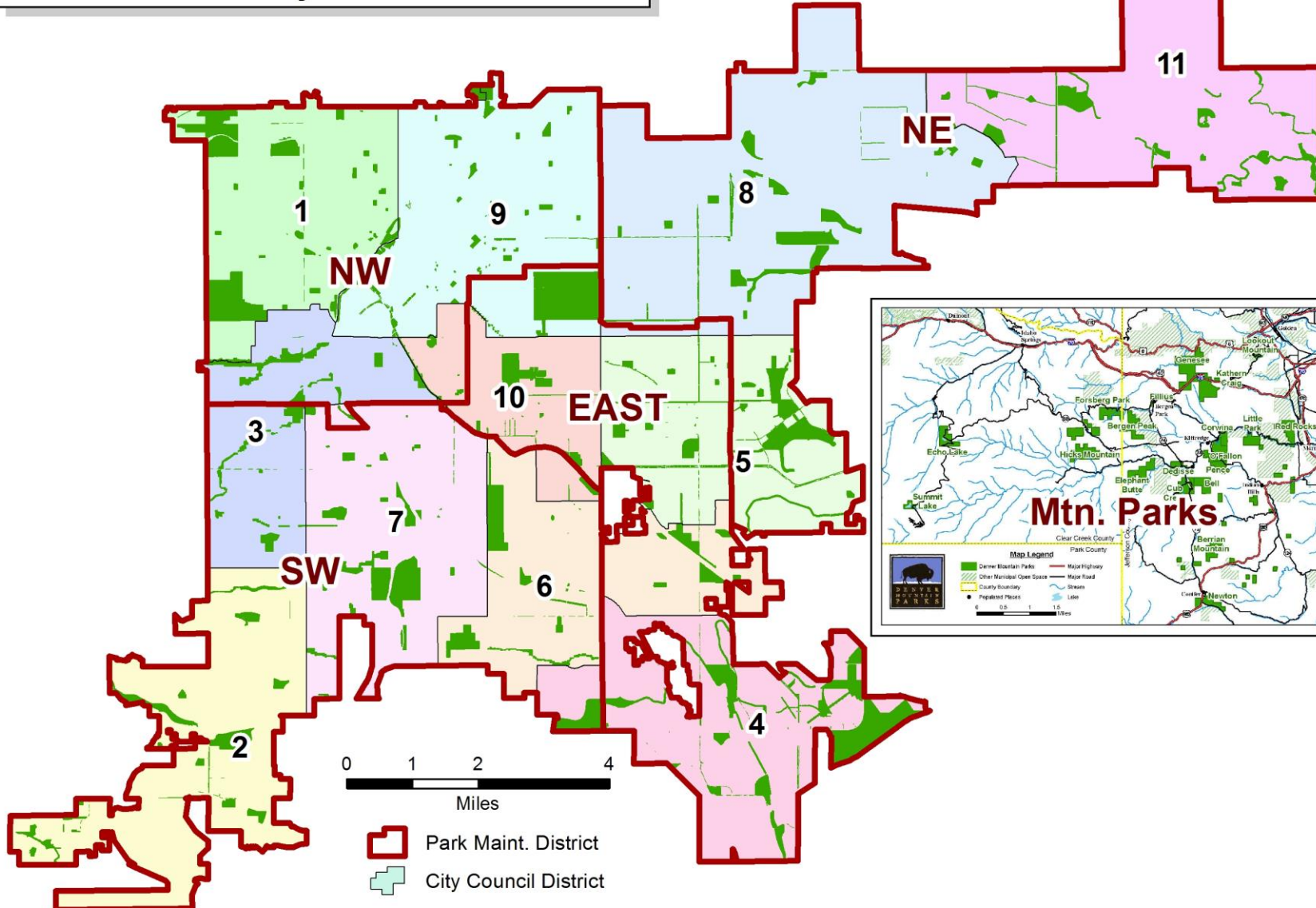
- Park System had its origin in 1858 with the cities of Auraria, Denver City and Highland at the confluence of the South Platte River and Cherry Creek
- First park was Curtis Park in 1868
- First Park Board was created in 1893
- The Park Board directed the management and development of the park system until about 1904
- Under Mayor Speer, a charter amendment in 1904 was adopted that created the Department of “Improvements and Parks”
- In 1910 the Mountain Park System was established
- In 1956 the Department of Parks and Recreation was created.
- Parcels that were acquired, developed or treated as a park at this time (1956) became designated under this charter amendment
- Subsequent park designations are accomplished through the City Council ordinance process

# Designation Considerations

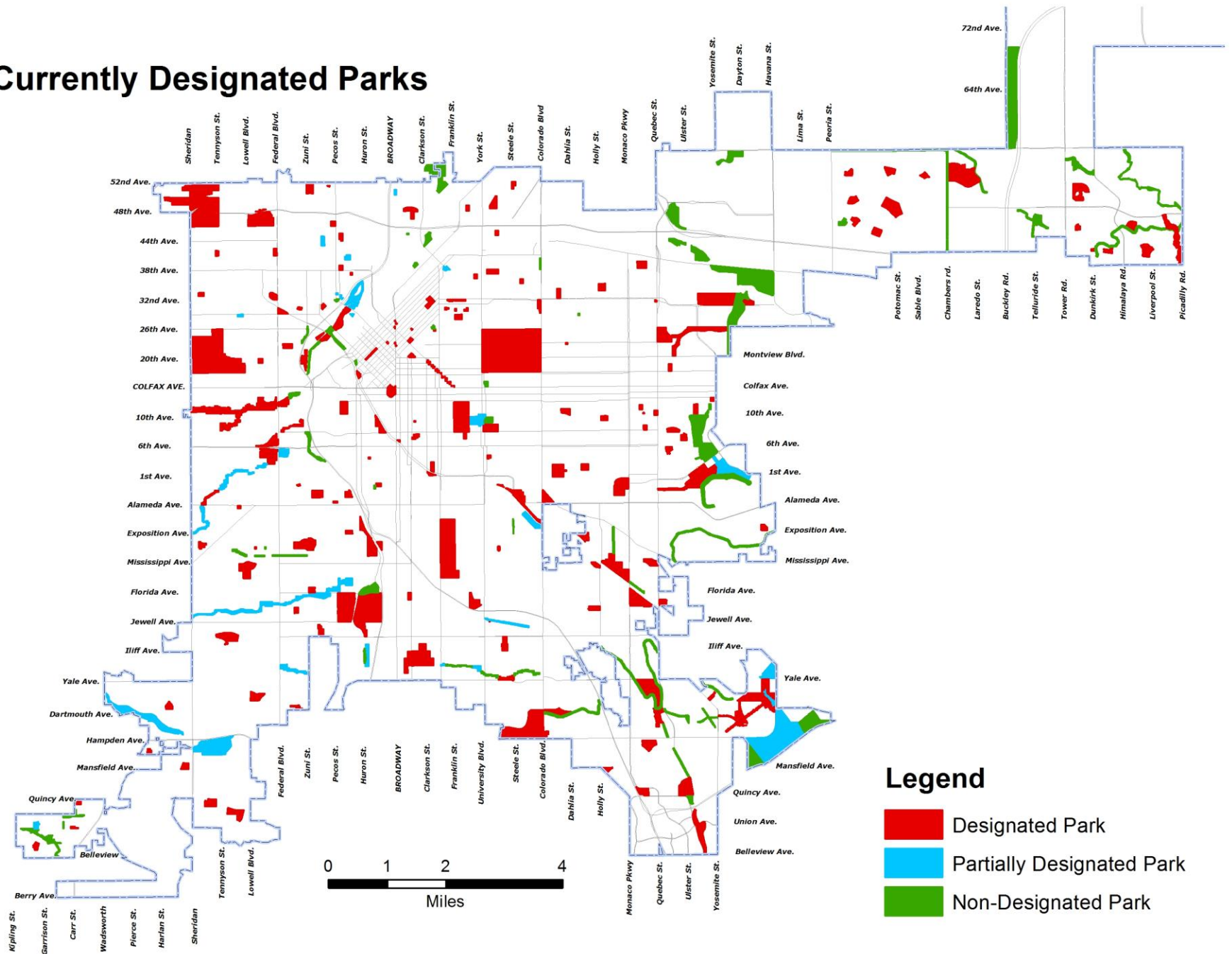
- Supports a master plan (City Park)
- Has historical, cultural, ecological, or educational significance (Civic Center, Cheesman)
- Preservation of key visual corridors or scenic vistas (Cranmer)
- Park facilities have been or are planned to be constructed (New Freedom, Cuatro Vientos)
- Area infrastructure / utilities are not in a state of flux that may impact or change the park (Hampden Heights Park)
- There are no title / ownership issues that cast a cloud on the City's title or right to possession of the park
- No pending or anticipated plans for making/expanding non-park uses within the park.

- Beginning of 2013
  - Approximately 68% of Parks were already designated
- 1<sup>st</sup> Round - April 2013
  - Approximately 180 acres became designated
  - Approximately 72% of system designated as parkland
- 2<sup>nd</sup> Round – January 2014
  - Approximately 275 acres became designated
  - Approximately 78% of system designated as parkland
- 3<sup>rd</sup> Round – April 2014
  - Approximately 164 acres became designated
  - Approximately 82% of system designated as parkland
- 4<sup>th</sup> and 5<sup>th</sup> Rounds – November 2014
  - Approximately 42 acres became designated
  - Approximately 84% of system designated as parkland

- 6<sup>th</sup> Round – Fall 2015
  - Approximately 88 acres became designated
  - Approximately 85% of system designated as parkland
- 7<sup>th</sup> Round – Spring 2016
  - Approximately 5.9 acres became designated
  - Approximately 78% of system will be designated as parkland
  - Percentage decreased due to the addition of more than 450 acres to the park system in 2015.
- Red Rocks Park Addition – Summer 2016
  - Approximately 98 acres added to Red Rocks became designated
  - This will completed the designation of the Mountain Park System
- 8<sup>th</sup> Round – Fall 2016
  - Approximately 180 acres will become designated
  - Approximately 81% of the system will be designated as parkland



# Currently Designated Parks



## Proposed Designations - Round 8

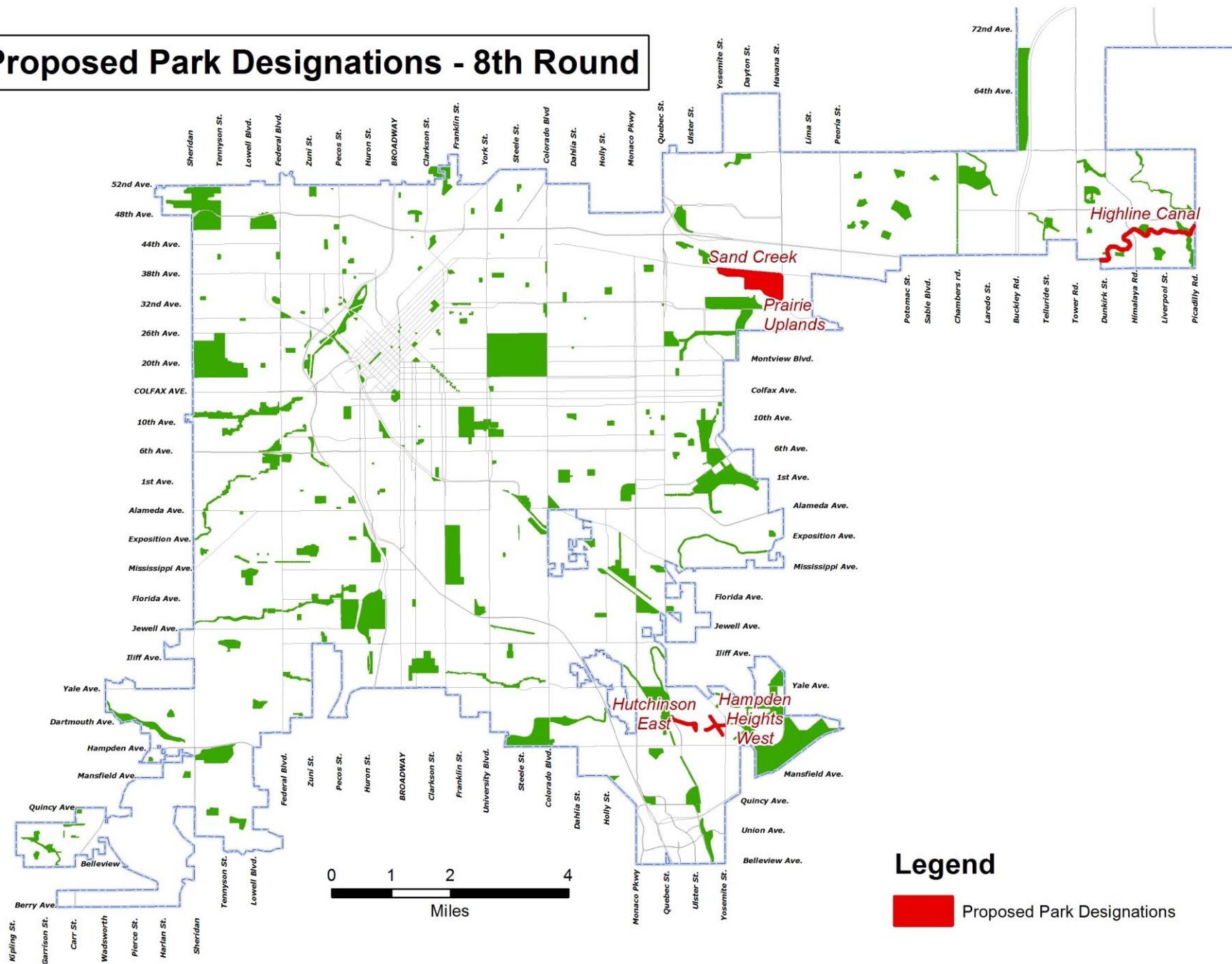
LOCATION NAME	PARK TYPE	GIS ACRES	MAINT DIST	COUNCIL DIST
Hampden Heights West	Linear	4.3	E	4
Hutchinson East*	Linear	1.7	E	4
Sand Creek Open Space	Undeveloped	102.9	NE	8
Prairie Uplands Park	Open Space	44.5	NE	8
High Line Canal (GVR)	Linear	27.0	NE	11

<b>Total Acres:</b>	<b>180.4</b>
---------------------	--------------

\* Portion of Park to be Designated

- Designation of parkland from 1956 to 2012 – 56 year time span: approximately 600 acres
- Designation of parkland form 2013 to 2016 – 4 year time span: approximately 1030 acres
- Park and Open Space acreage added to the Denver Parks system from 2013 to 2016: approximately 625 acres

# Proposed Park Designations - 8th Round



**Hampden Height West**

Aerial Imagery - 2014

1 inch = 200 feet at 11x17

100

100  
Map Scale In Feet





## Hutchinson East Park

Aerial Imagery - 2014

1 inch = 200 feet at 11x17

100

Map Scale In Feet



## Sand Creek Open Space

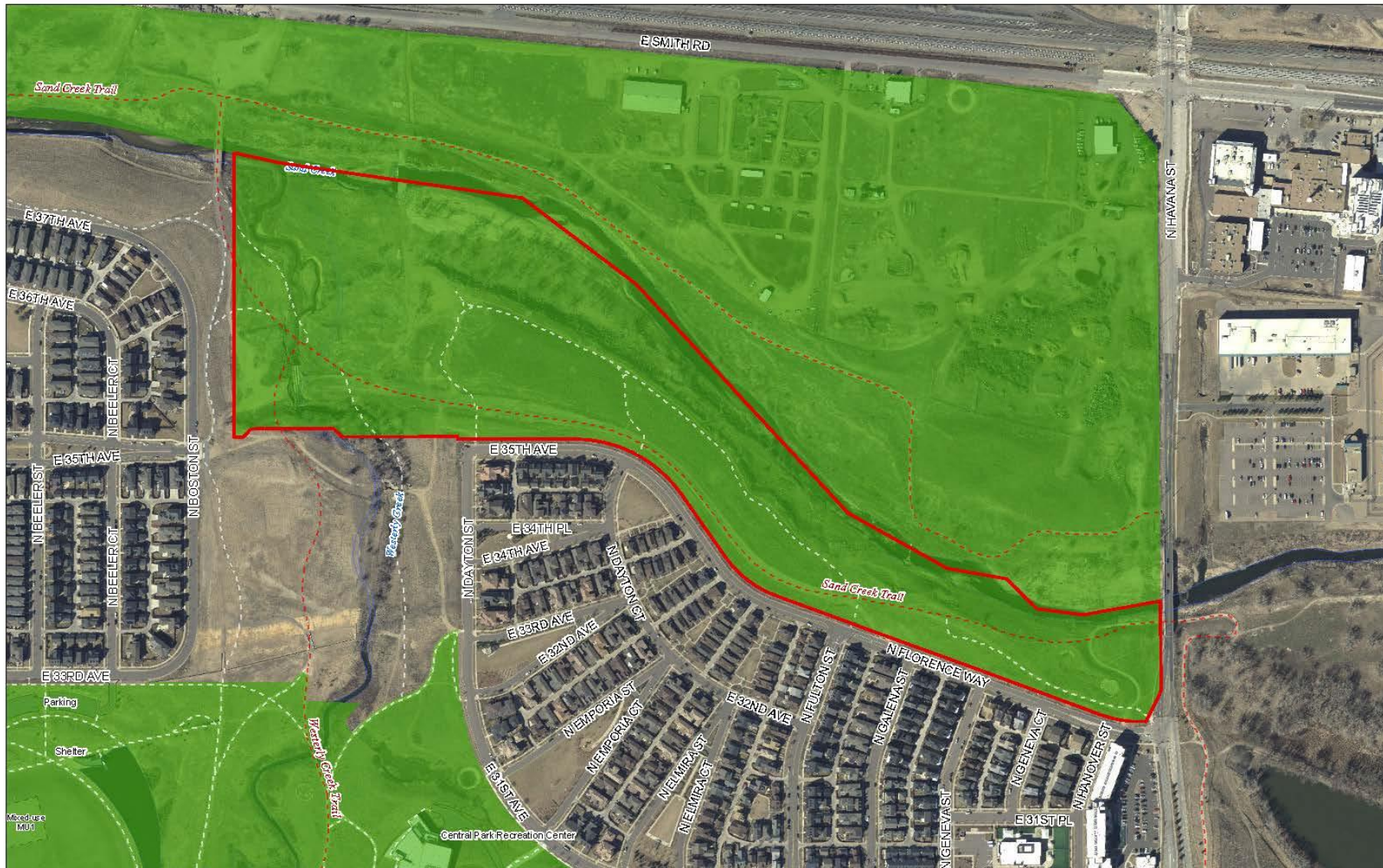
Aerial Imagery - 2014

1 inch = 400 feet at 11x17

100

100  
 Map Scale In Feet





## Prairie Uplands Park

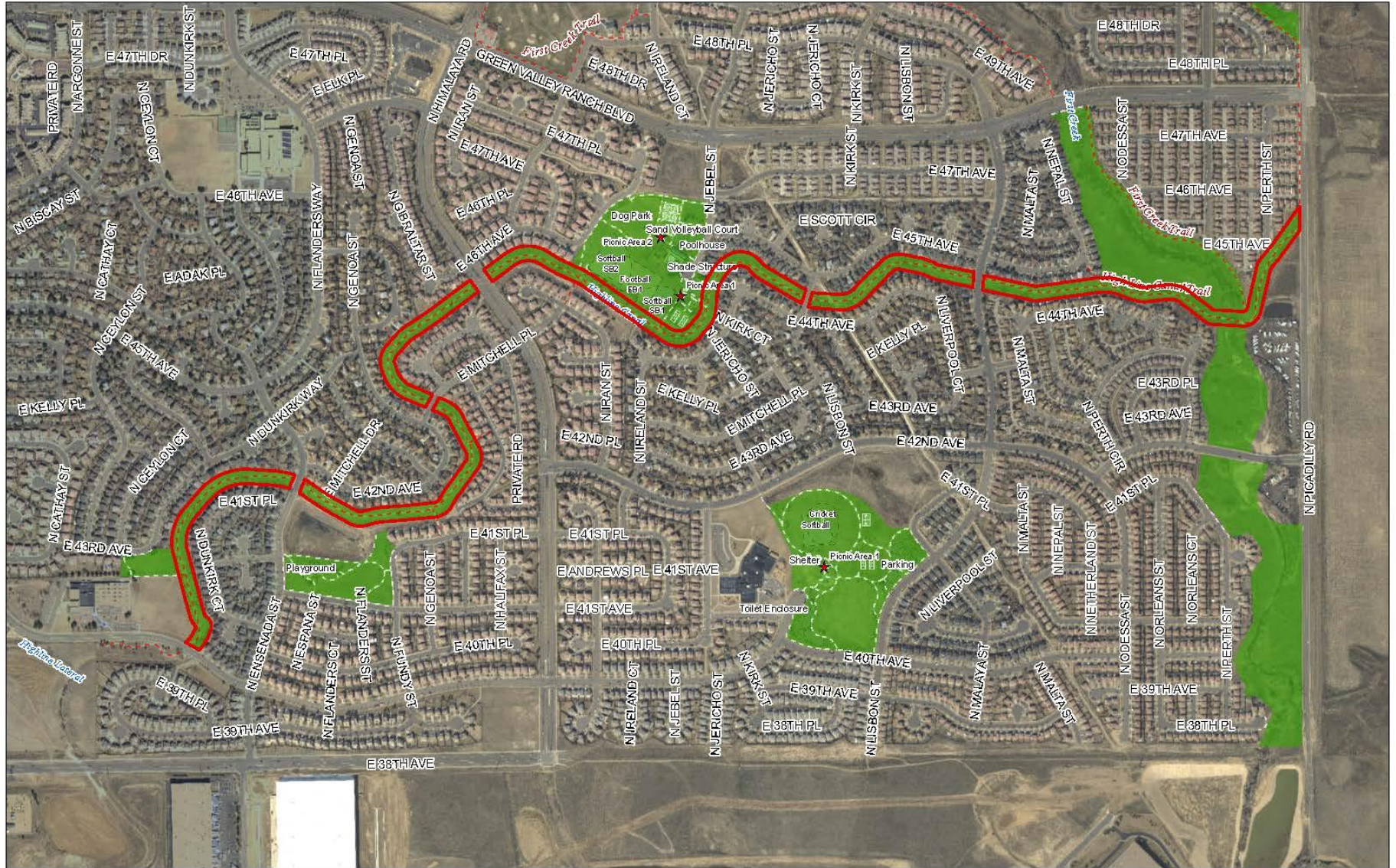
Aerial Imagery - 2014

1 inch = 300 feet at 11x17

100

Map Scale In Feet





# High Line Canal (GVR)

Aerial Imagery - 2014

1 inch = 600 feet at 11x17  
100  
Map Scale In Feet



# Questions / Comments

