

# Program Update

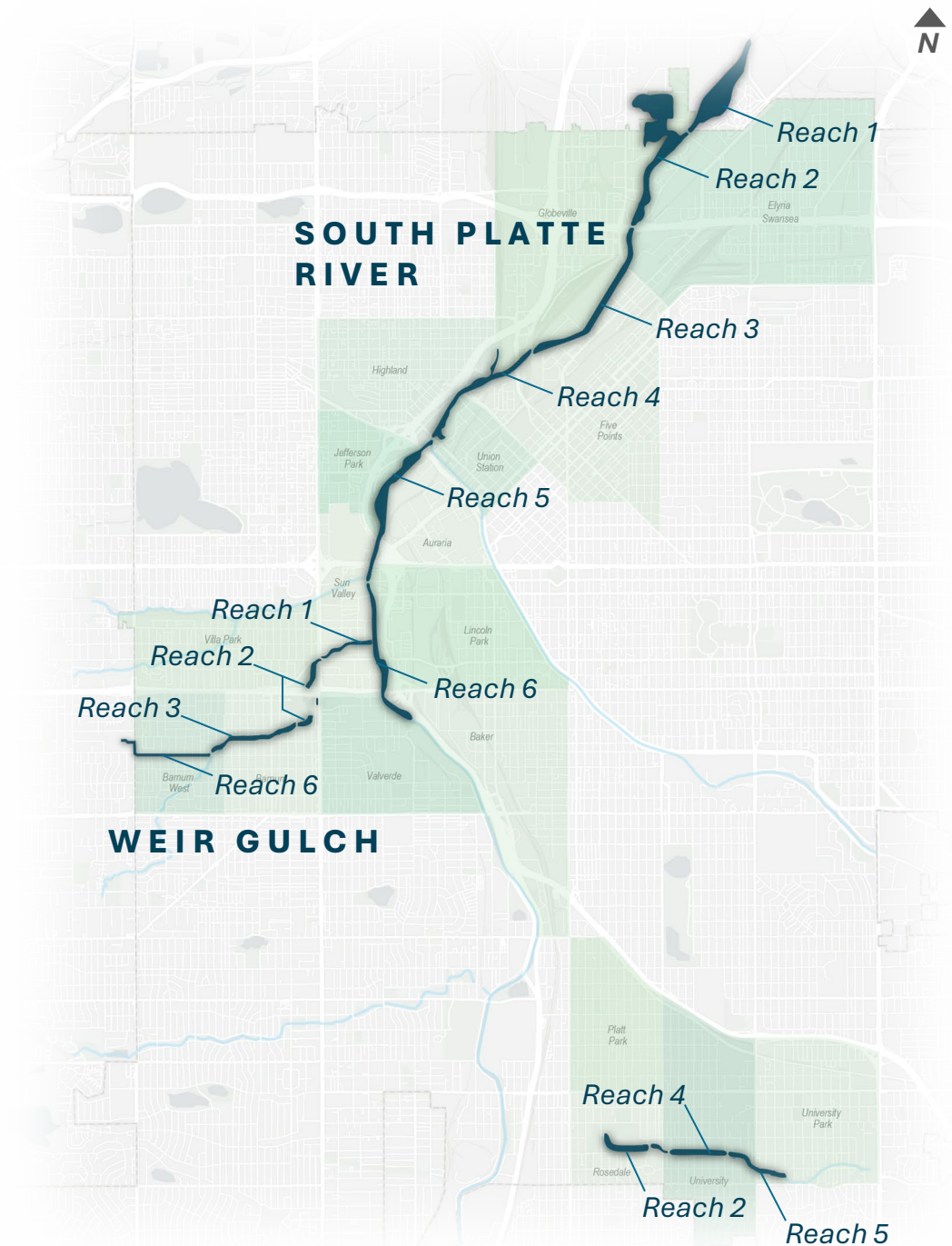
## South Platte River Committee

October 08, 2025



WATERWAY  
RESILIENCY  
PROGRAM

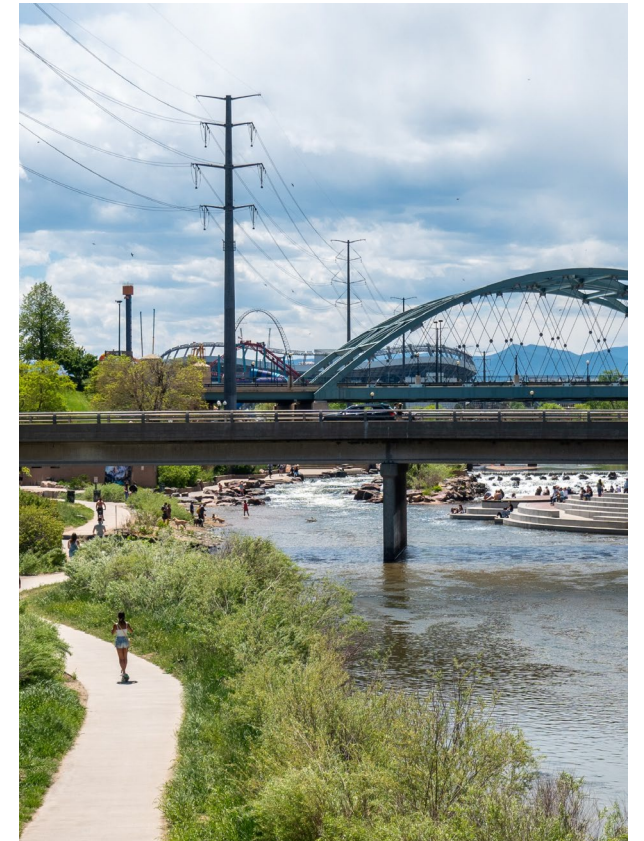
WEIR GULCH • SOUTH PLATTE • HARVARD GULCH



# Agenda

---

- Program update
  - Program Timeline
  - Risk management: Request to amend agreement
- Project Update
  - Weir Gulch Segment 1 Construction
  - Weir Gulch Segment 2, 3, & 4 Design
  - Outreach





# Program Updates

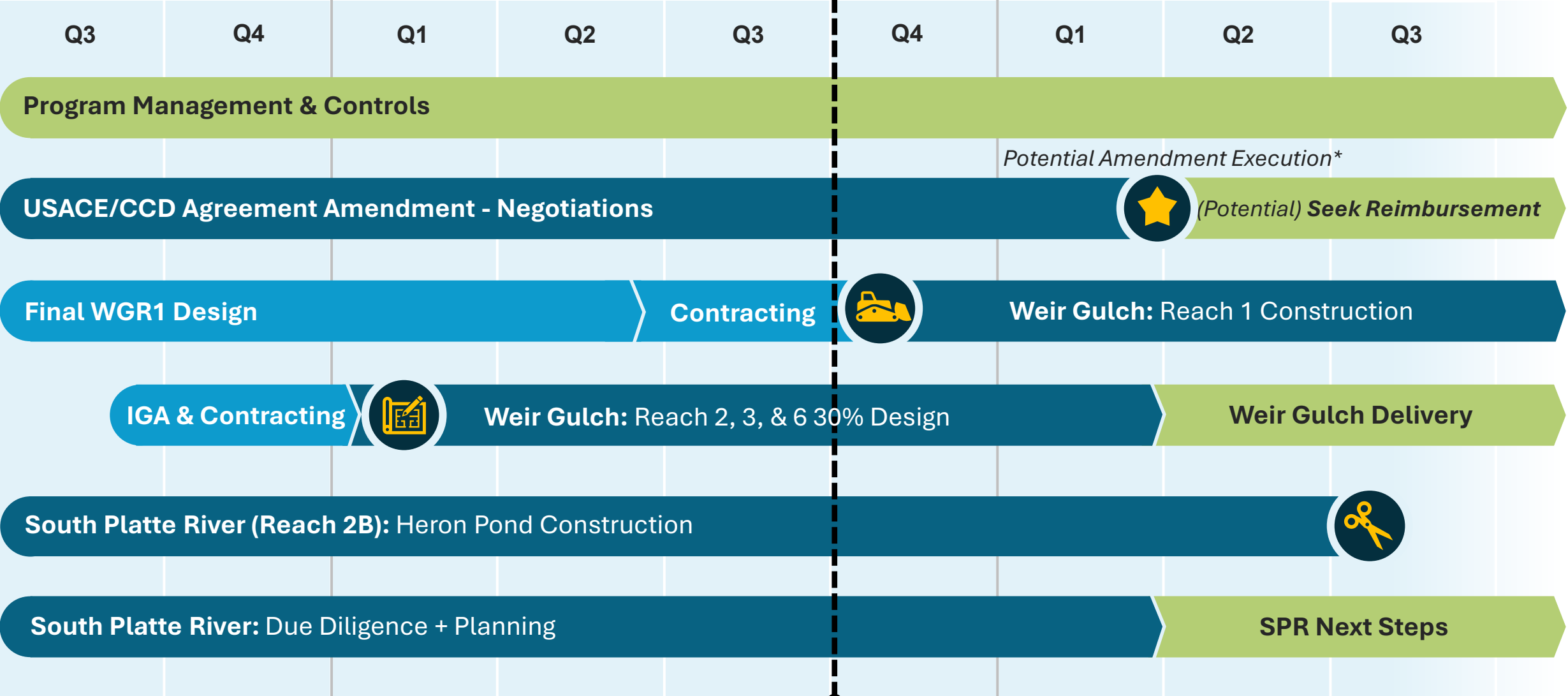
# Project Schedule

CY 2024

CY 2025

We are here!

CY 2026



*\*Amendment execution dependent on successful negotiations, support from ASA-CW, and Denver City Council Action*

# EXECUTED AGREEMENT: MAY 8, 2023



## 1<sup>ST</sup> OF ITS KIND

- CCD leads project delivery
- Cost-shared for “project costs”
- Federal (BIL) reimbursement can be sought as Denver completes discrete segments

### Significant risk transfer to Denver

- Lack of design maturity = lack of cost certainty
- Unclear obligations and unclear applicability of remedies available to USACE if CCD fails to meet obligations



**Revolutionize USACE Civil Works aims to modernize traditional delivery of the USACE Civil Works program:**

- **Optimize local participation** and provide Non-Federal Sponsor (Denver) more control
- **Accelerate delivery**
- **Provide life-cycle cost savings** for Federal government and local sponsor

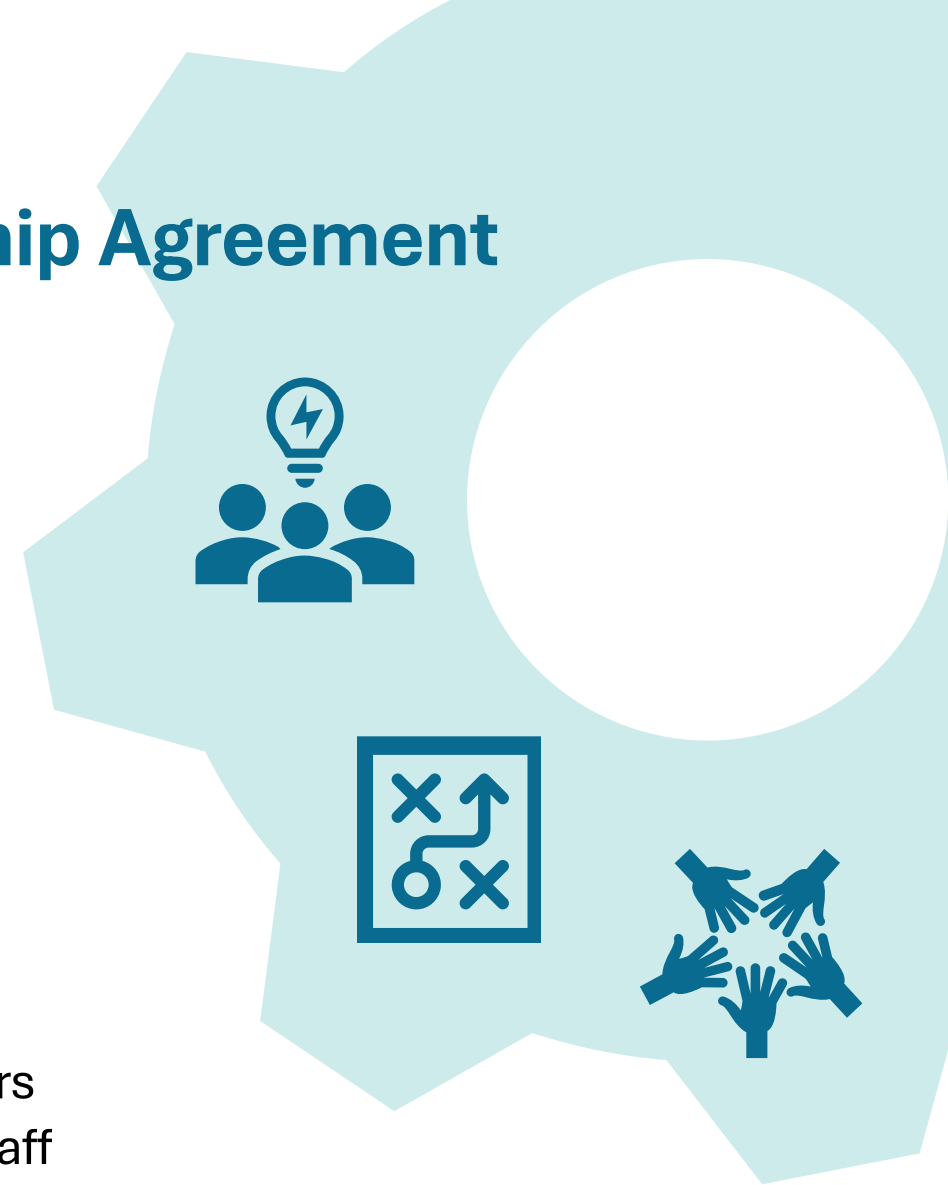
# Risk Management: Request to Amend USACE/CCD Partnership Agreement

**Strategy:** Request technical changes to agreement and supporting documents to make risk manageable

- Federal authorization needed: Assistant Secretary of the Army – Civil Works
  - Does not require Congressional approval

## Request Development:

- ✓ Comprehensive: Ten months of development
- ✓ Collaborative:
  - Worked closely with USACE District, Division and Headquarters
  - CCD team consisted of DOTI, DOF and CAO leadership and staff





# Redefining Separable Elements

USACE and CCD have both agreed via executed memos that the reaches/sub-reaches identified in the FEIS are in alignment with USACE’s definition of Separable Elements.

	Current	Proposed
South Platte:	1	9
Weir Gulch:	1	4
Harvard:	1	1
<b>TOTAL:</b>	<b>3</b>	<b>14</b>

Weir Gulch: Recommended Separable Elements



South Platte River: Recommended Separable Elements





## Request:

- ✓ Clarify that obligations and remedies occur at the separable element level (not entire scope)
- ✓ Redefine separable elements from 3 to 14
- ✓ Clarify CCD's financial commitment is match\* to Federally appropriated \$350M, anything beyond would require action by both parties
- ✓ Acknowledge that CCD and USACE will work together to manage scope and budget which may involve future studies and/or Congressional action

*\*CCD's match consists of shared project costs plus environmental remediation and other potential costs; CCD's match will be better understood as conceptual design is advanced*

## Benefits:

- ★ Significantly reduce CCD's risk exposure, making it easier to manage
- ★ Enable CCD to initiate concept design on South Platte River which will drive towards better understanding of costs
- ★ Allow for flexibility in project planning and implementation sequencing
- ★ Allow CCD to develop plan(s) of finance at a smaller scale





# Next Steps for Request

**Status:** CCD submitted request to USACE on Friday, September 26, 2025

- Submitted before end of Federal Fiscal Year (09/30) to demonstrate continued commitment to deliver project (have yet to seek Federal reimbursement on appropriated funds)

## Next Steps:

- Negotiations
- If negotiations successful, bring through CCD's legislative process for action
- If amendment execution successful:
  - Identify path to drive towards cost certainty on SPR (already advancing Weir Gulch)
  - Able to develop financial plans for smaller portions of the program (potentially separable element by separable element)
  - Begin seeking reimbursement for separable elements that have full plan of finance (risk is mitigated)
    - Initially: Weir Gulch Segment 1



# Project Update: Weir Gulch Segment 1

# Weir Gulch Segment 1: Construction



## Design

- ✓ 100% Design documents completed
- ✓ CLOMR (FEMA) approved
- ✓ USACE approved design for construction

## Outreach:

- ✓ Pre-construction meeting held October 1, 2025

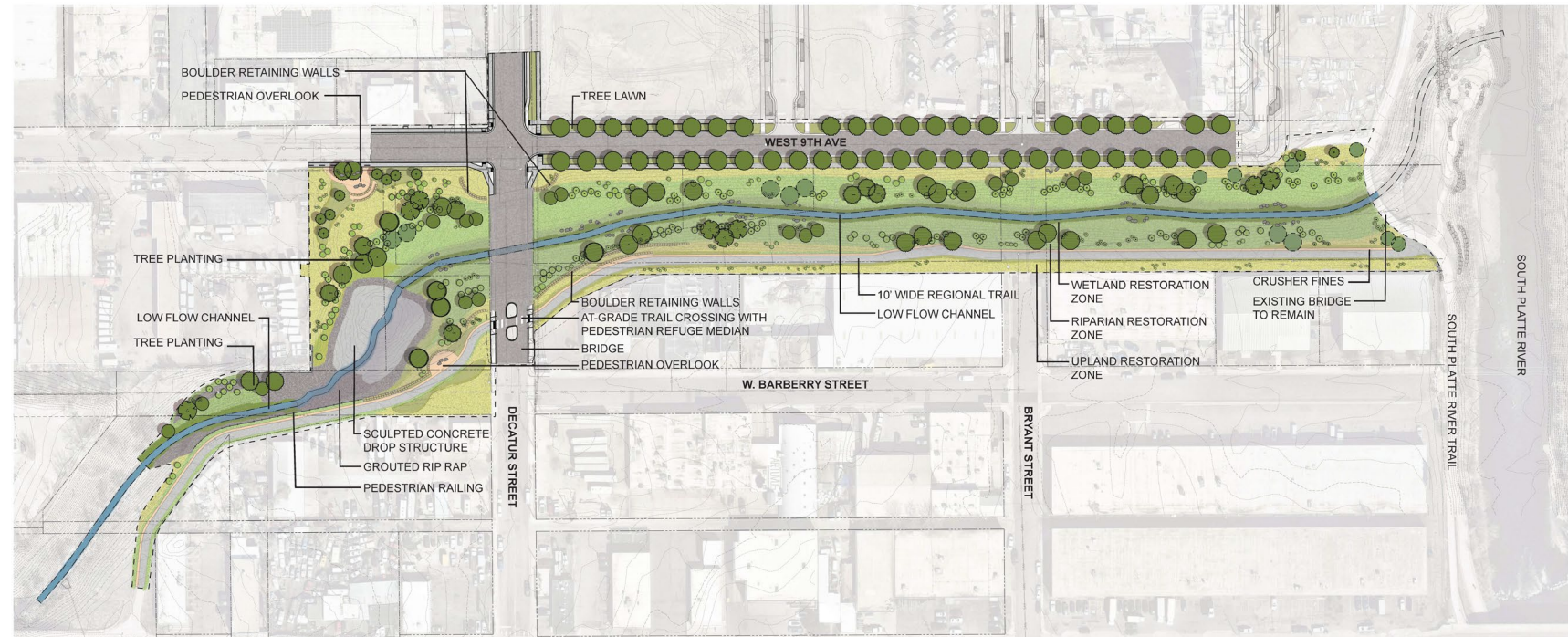
## Construction

- Contract award expected mid-October
- **Construction anticipated to start October 20, 2025**

## Anticipated Construction Schedule

	2025	2026
Construction	Mid-October 2025 to Summer 2026	
Decatur Street & 9th Avenue Closure	Late October/Early November 2025 to May/June 2026	
Weir Gulch Trail Closure	Late October/Early November 2025 to June/July 2026	

## Project Rendering



**WEIR GULCH DECATUR CROSSING**  
DENVER, CO

# Stay Connected!

## Information Line and Email

- 720-459-4695
- [weirconstruction@denvergov.org](mailto:weirconstruction@denvergov.org)

## Join the mailing list!

Scan the QR Code or fill out our sign-up sheet!



## Visit our website





# Weir Gulch Segment 1: 6<sup>th</sup> Amendment



**Purpose:** Standard amendment to MHFD/CCD IGA that documents 2024 and 2025 already appropriated funding for project from both parties (since funding amounts were last documented)

- Ensure continued compliance with CCD/USACE Agreement
- Funds acknowledged in amendment:
  - MHFD: \$6M (2025 budget)
  - CCD: \$7.5M (from Wastewater Capital 2024 and 2025 budgets)
- Completes capital stack for construction of Weir Gulch R1

**Status:** In Jagger/contracting system and process

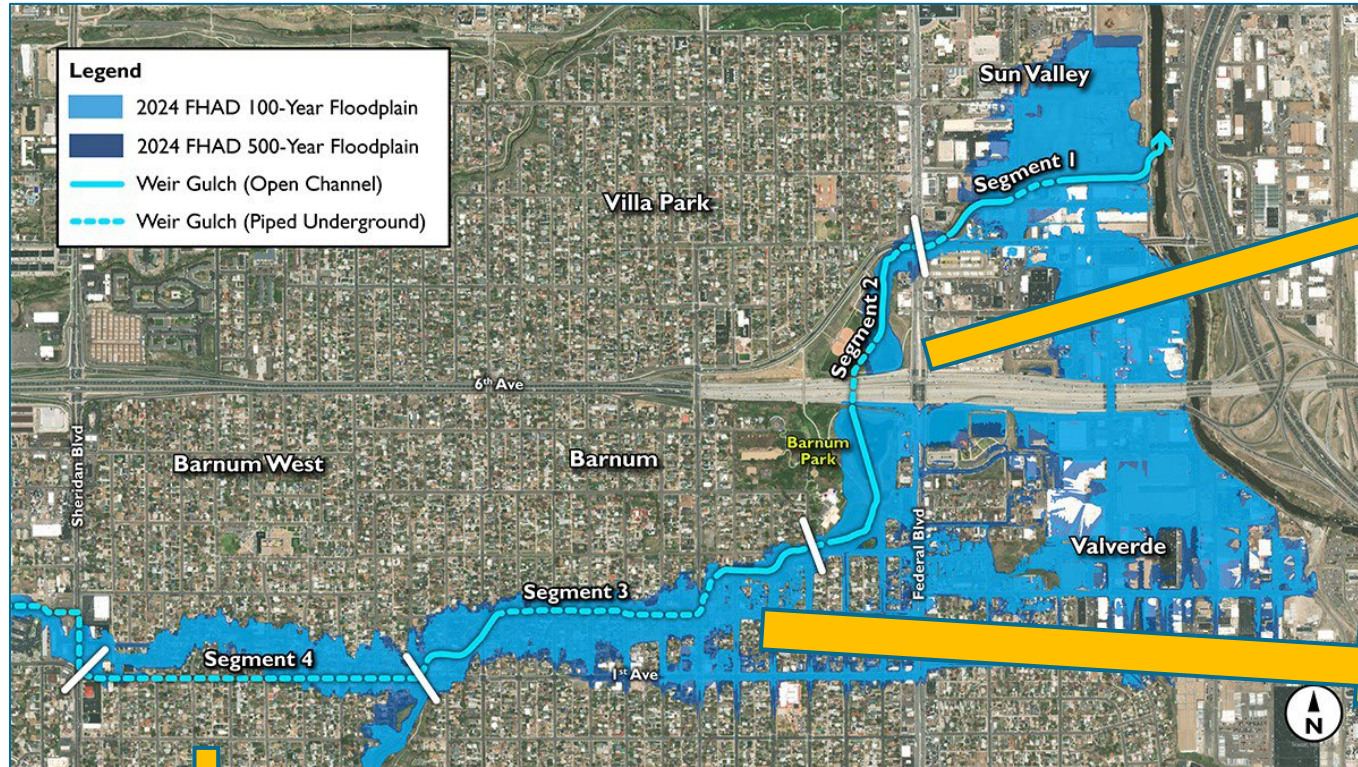
- Will likely see as an item in an upcoming mtg





# **Project Update: Weir Gulch Segments 2, 3, & 4**

# Weir Gulch Segments 2, 3, & 4: Existing Conditions & Considerations



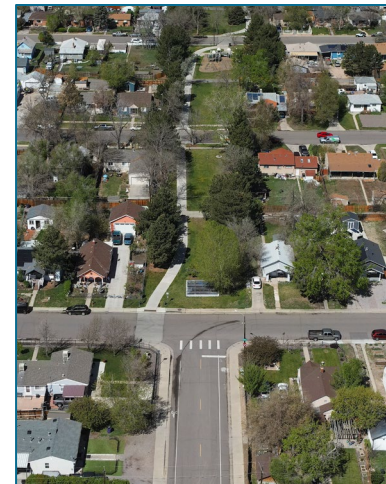
## Segment 2: Federal Blvd to Hooker St.

- Recreational & public space character
- Mostly open channel
- Recreational amenities:
  - Barnum Rec Center
  - Barnum Lake
  - Barnum Dog Park
  - Barnum Softball Fields
  - Barnum Mountain Bike Park



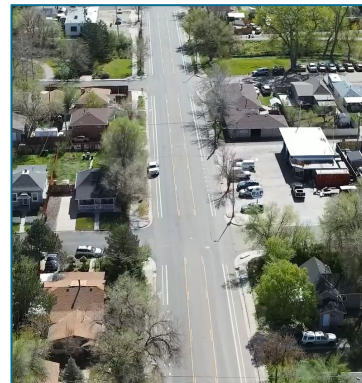
## Segment 3: Hooker St. to Raleigh St

- Residential character
- Mix of open channel & pipe
- Fragmented trail
- Amenities:
  - Newton Playground
  - Barnum community garden & orchard
  - Linear park space for soccer & play



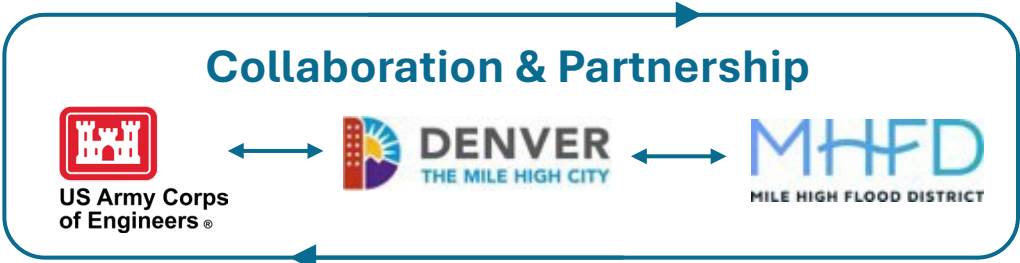
## Segment 4: Raleigh St. to Sheridan Blvd.

- Residential & commercial character
- Rolling hills
- Tributary is piped under 1st Ave
- Existing bike lanes & transit route on 1st Ave
- No public spaces along the street





# Weir Gulch Segments 2, 3, & 4: Design Approach



## MHFD Urban Stream Assessment Procedure

### Hydraulics

How water flows through the stream, including speed, depth and direction.

### Hydrology

Where the water comes from, how much water there is, and how it moves through the landscape.

### Geomorphology

How the shape and features of the stream and land around it change over time.

### Vegetation

The plants that grow along the stream that help support wildlife and prevent erosion.

### Community Values

What matters most to the people who interact with Weir Gulch and the surrounding community.



Examples of Waterway Design Approaches

### Street + Pipe Infrastructure / Infraestructura de calles y tuberías

Limited space for trees, habitat & ecological benefit.  
*Espacio limitado para árboles, hábitat y beneficios ecológicos.*

No space for recreation/amenities.  
*No hay espacio para actividades recreativas/servicios.*

All water diverted underground.  
*Todo el agua se desvía bajo tierra.*  
Limited future flood mitigation.  
*Mitigación limitada de futuras inundaciones.*

Smallest dimension.  
*Dimensión más pequeña.*

A 3D cutaway diagram showing a street with cars. Below the street, a large, deep underground pipe is shown. The surrounding area is filled with soil and some vegetation. A double-headed arrow indicates the 'Smallest dimension'.



### Park + Pipe Infrastructure / Infraestructura de parques y tuberías

Limited space for trees, habitat & ecological benefit.  
*Espacio limitado para árboles, hábitat y beneficios ecológicos. (No se pueden plantar árboles sobre tuberías.)*

Allows for recreation & amenities.  
*Permite espacio para actividades recreativas/servicios.*

Trail crossings must be at-grade.  
*Los cruces de senderos deben estar a nivel del suelo.*

All water diverted underground.  
*Todo el agua se desvía bajo tierra.*  
Limited future flood mitigation.  
*Mitigación limitada de futuras inundaciones.*

Small dimension.  
*Dimensión pequeña.*

A 3D cutaway diagram showing a park area with grass and trees. A shallow underground pipe is shown running through the park. A double-headed arrow indicates the 'Small dimension'.



### Open Channel & Pipe Hybrid / Híbrido de canal abierto y tubería

Limited space for trees (cannot be planted over pipes).  
*Espacio limitado para árboles (no se pueden plantar sobre tuberías).*

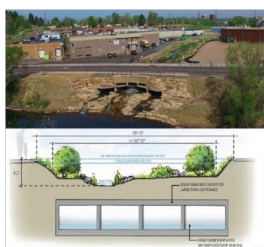
Some habitat and ecological benefit.  
*Algunos beneficios ecológicos y para el hábitat.*

Trail crossings must be at-grade.  
*Los cruces de senderos deben estar a nivel del suelo.*

Open channel handles small storms.  
*El canal abierto gestiona tormentas pequeñas.*  
Big storms are diverted underground.  
*Las grandes tormentas se desvían bajo tierra.*

Medium dimension.  
*Dimensión media.*

A 3D cutaway diagram showing a hybrid system. An open channel is shown on the surface, and a pipe is shown underground. A double-headed arrow indicates the 'Medium dimension'.



### Urban Open Channel / Canal abierto urbano

More space for trees.  
*Más espacio para los árboles.*

More habitat and ecological benefit.  
*Más hábitat y beneficios ecológicos.*

Can have grade-separated trail crossings (underpasses).  
*Puede tener cruces de senderos con separación de niveles (pasos subterráneos).*

Open channel carries all stormwater.  
*Canal abierto para todas las aguas pluviales.*

Narrower channel needs some hard edges (concrete/boulders).  
*Los canales más estrechos necesitan algunos bordes duros (hormigón/rocas).*

Large dimension.  
*Dimensión grande.*

A 3D cutaway diagram showing an urban open channel. The channel is wide and deep, with concrete walls. A double-headed arrow indicates the 'Large dimension'.



### Natural Open Channel / Canal abierto natural

Most space for trees.  
*El mayor espacio para los árboles.*

Most habitat and ecological benefit.  
*Mayor beneficio ecológico y para el hábitat.*

Can have grade-separated trail crossings (underpasses).  
*Puede tener cruces de senderos con separación de niveles (pasos subterráneos).*

Open channel carries all stormwater.  
*Canal abierto para todas las aguas pluviales.*

Wider channel can have softer, greener edges.  
*Un canal más ancho puede tener bordes más suaves y verdes.*

Largest dimension.  
*Dimensión máxima.*

A 3D cutaway diagram showing a natural open channel. The channel is wide and shallow, with natural banks. A double-headed arrow indicates the 'Largest dimension'.





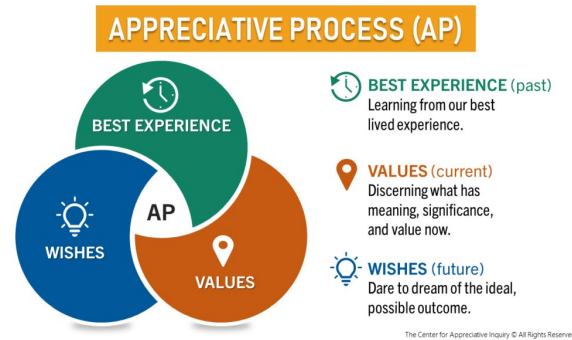


# Weir Gulch Segment 2, 3, & 4: Public Engagement

“We cannot solve problems with the kind of thinking we employed when we came up with them.” – Albert Einstein

Partnered with the Engineering Change Lab to structure community engagement approach which has received **very positive feedback** from community.

- ✓ 3 Stakeholder Community Circles
- ✓ 2 public meeting
- ✓ Numerous Registered Neighborhood Organization (RNO) meetings, pop-ups and community events
- ✓ Flyers and yard signs
- ✓ Monthly briefings with District 3 City Council office



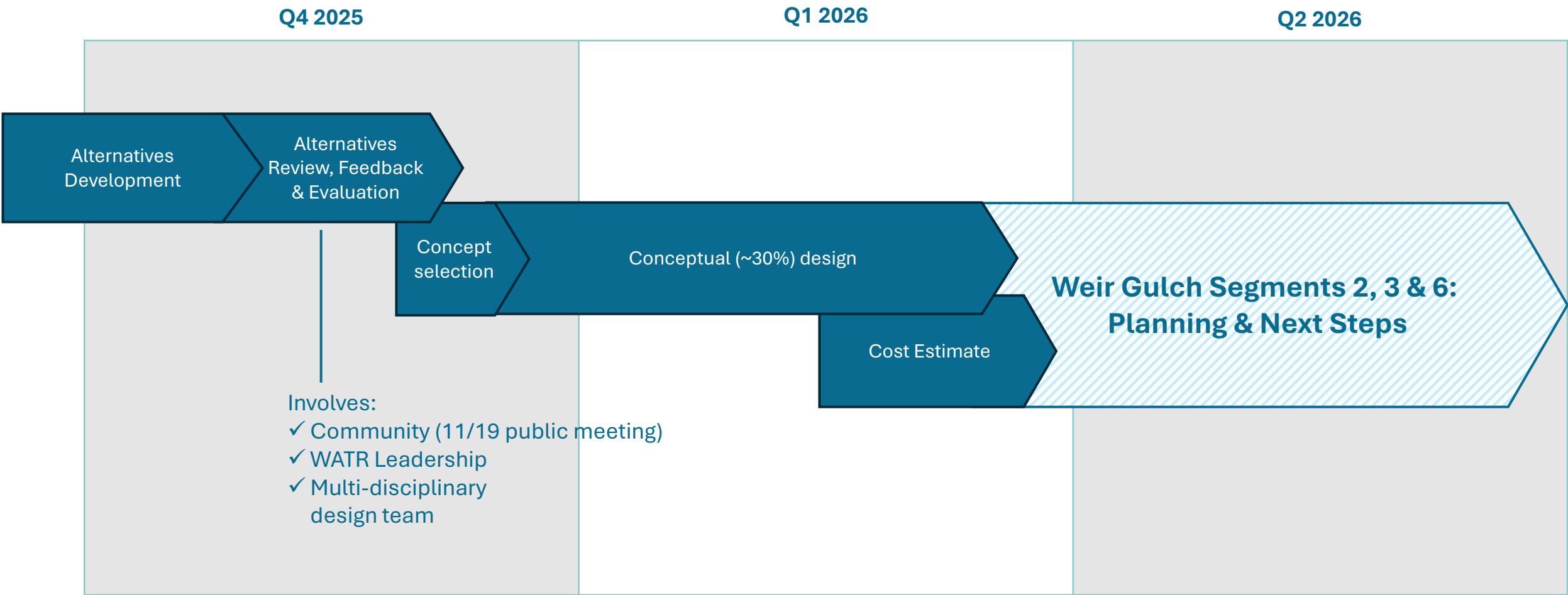
## Key Themes and Values

- Address safety concerns and risks
- Community pride and stewardship
- Meaningful engagement and being heard
- Preservation and enhancement of nature & ecology
- Increase connectivity, access & visibility
- Addressing neighborhood places and gathering spaces
- **Uncertainty and displacement:** Desire for clarity on project impacts, property acquisitions, and timelines





# Weir Gulch Segments 2, 3, & 4: Next Steps





# Thank you!

[waterwayresiliency@denvergov.org](mailto:waterwayresiliency@denvergov.org)

[DENVERGOV.ORG/WATERWAYRESILIENCY](https://denvergov.org/waterwayresiliency)

